

Platelet PD-L1 suppresses anti-cancer immune cell activity in

PD-L1 negative tumors

Zaslavsky A.^{1,2*}, Adams M.P.^{1,2}, Cao X.^{1,2}, Maj T.³, Choi JE^{2,4}, Judith Stangl-Kremser^{1,6},
Patel S.^{1,2}, Putelo A.^{1,2}, Lee S.^{1,2}, Nallandhighal S.^{1,2}, Kasputis A.^{1,2}, Alva A.^{2,3}, Lew M⁷, Qin A.³,
Mehra R.⁷, Morgan T.M.^{1,2}, Salami S.^{1,2}, Reichert Z.^{2,3}, Udager A.⁷,
Zou W.⁴, Palapattu G.S.^{1,2,6*}

¹Department of Urology, University of Michigan, Ann Arbor, MI.

²Rogel Cancer Center, University of Michigan, Ann Arbor, MI.

³Department of Internal Medicine, Division of Hematology/Oncology, University of Michigan, Ann Arbor, MI.

⁴Department of Surgery, University of Michigan, Ann Arbor, MI.

⁵Michigan Center for Translational Pathology, University of Michigan, Ann Arbor, MI.

⁶Department of Urology, Medical University of Vienna, Vienna, Austria.

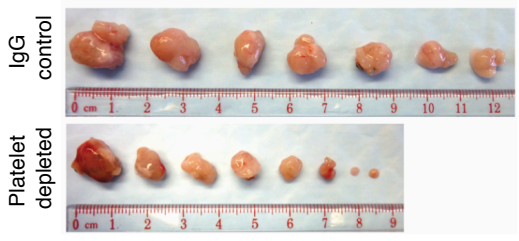
⁷Department of Pathology, University of Michigan, Ann Arbor, MI

Running title: Platelet PD-L1 and cancer

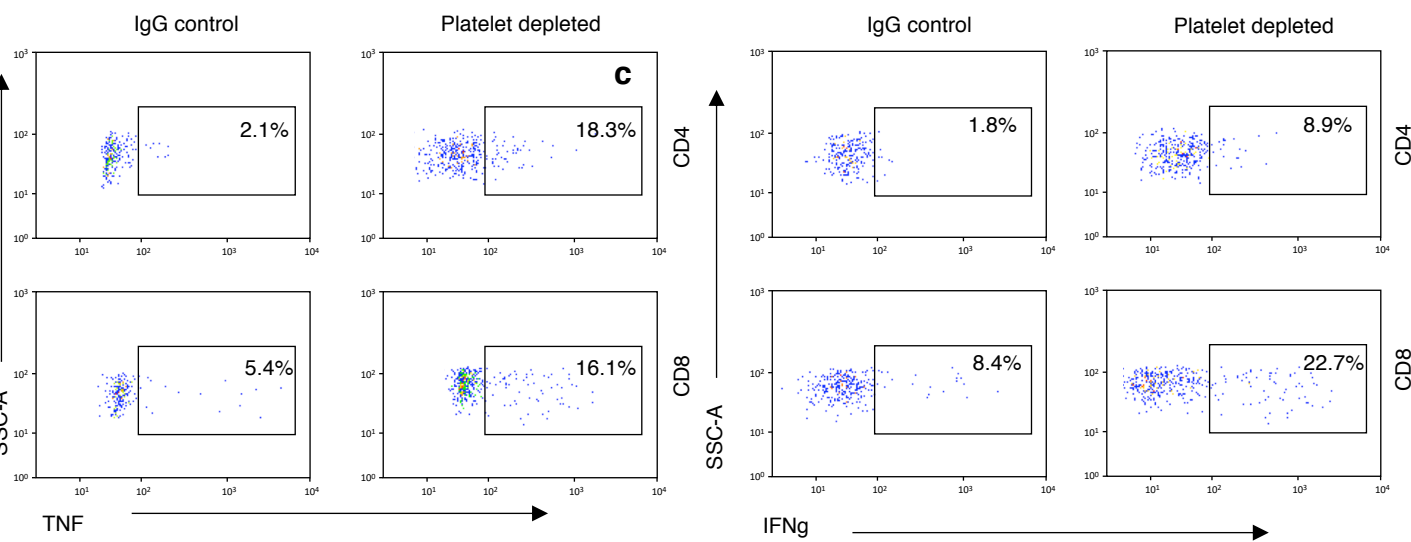
Supplemental Figure 1

a

MC38 PD-L1 KO tumors



b

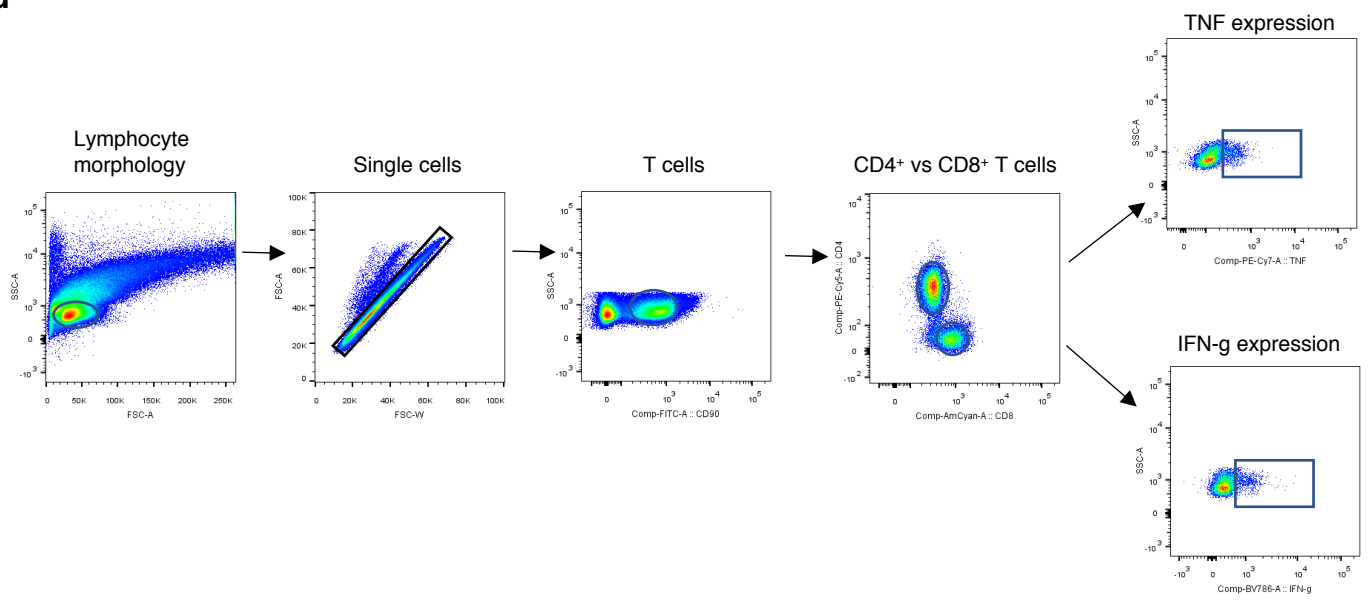


c

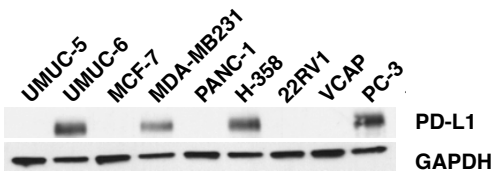
MC38 PD-L1 KO tumors



d



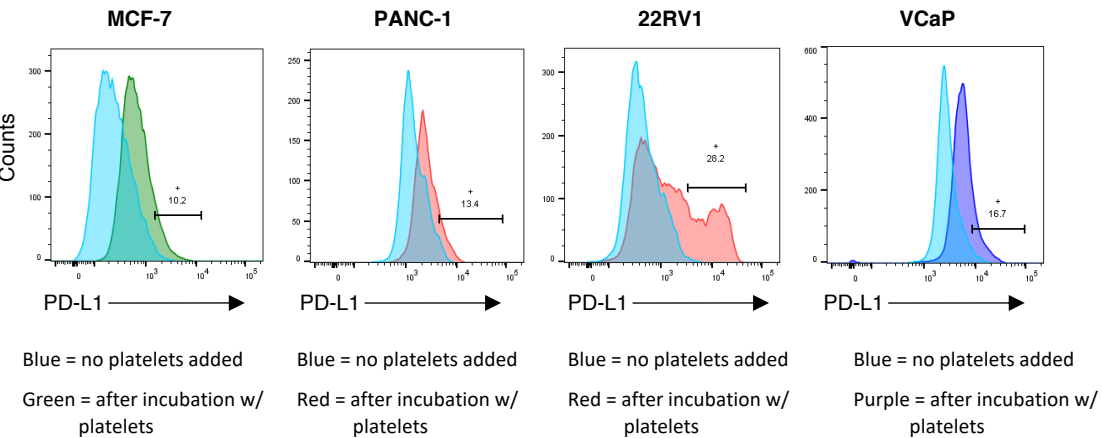
Supplemental Figure 2



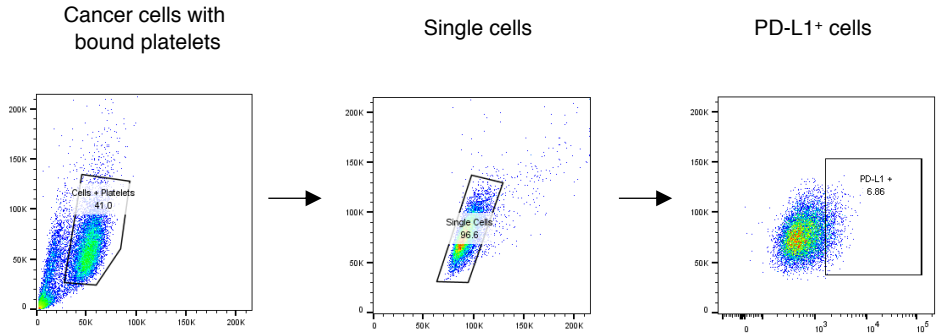
Supplemental Figure 3

a

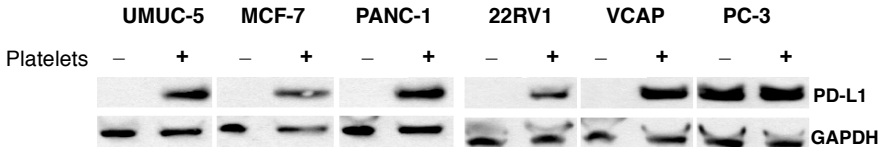
cancer cells + platelets



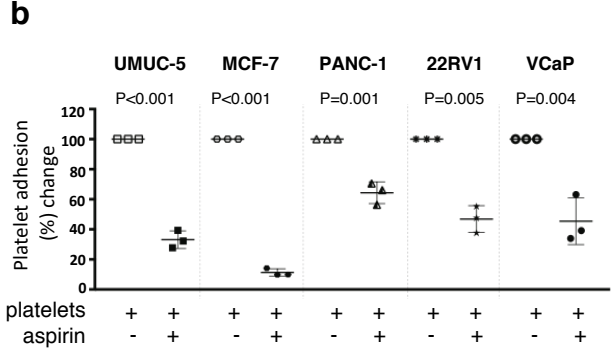
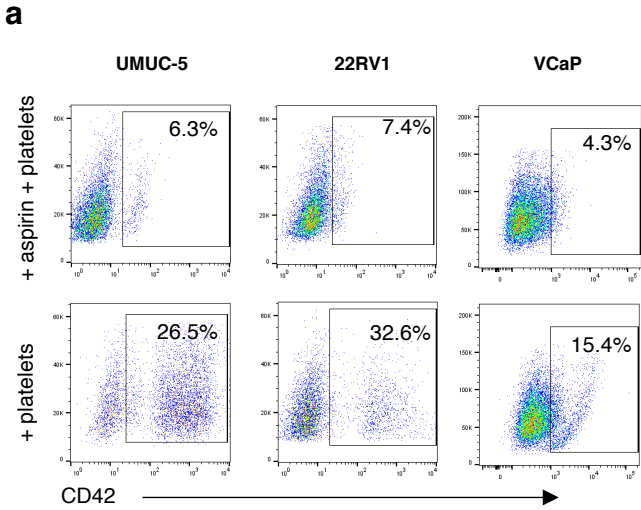
b



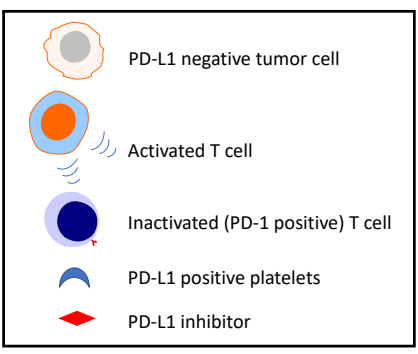
c



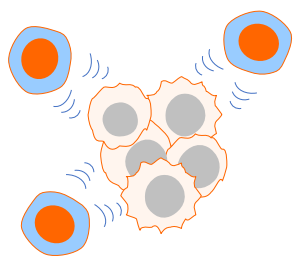
Supplemental Figure 4



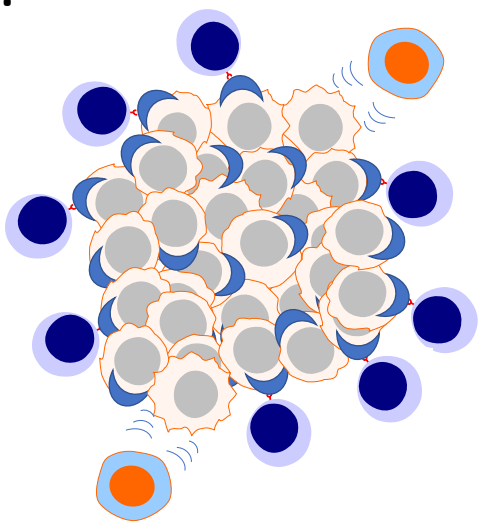
Supplemental Figure 5



a.



b.



c.

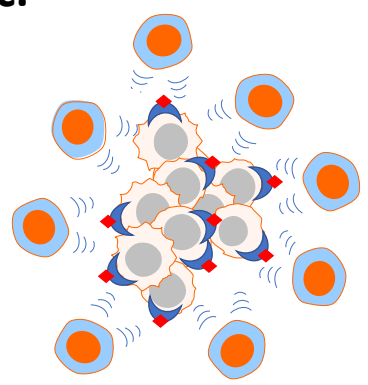


Figure 1 D

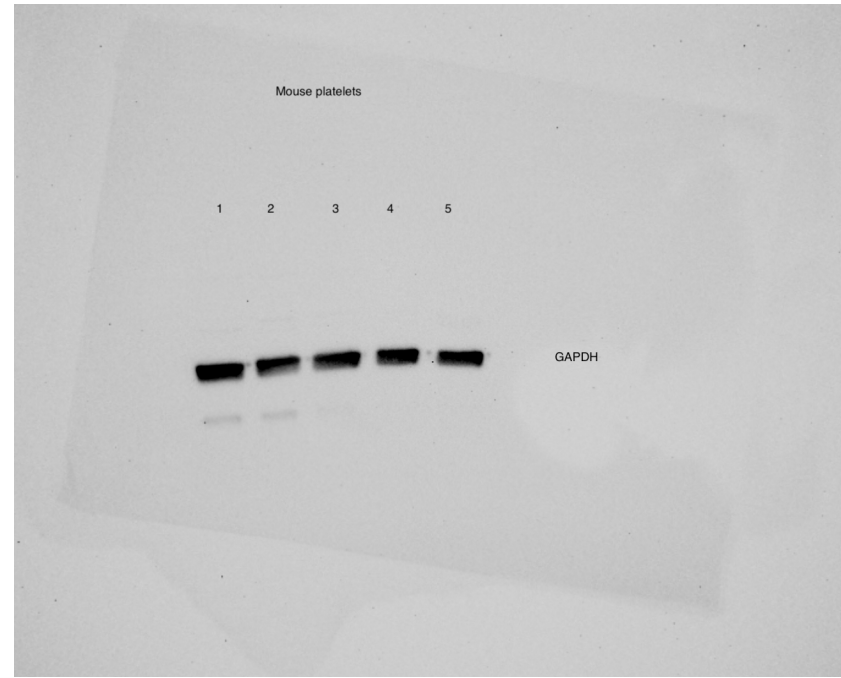
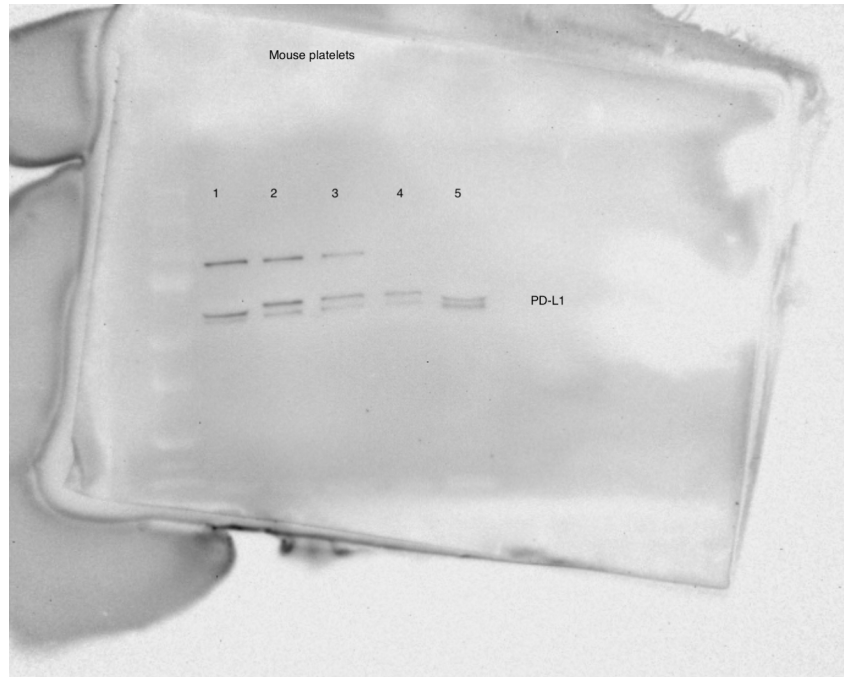
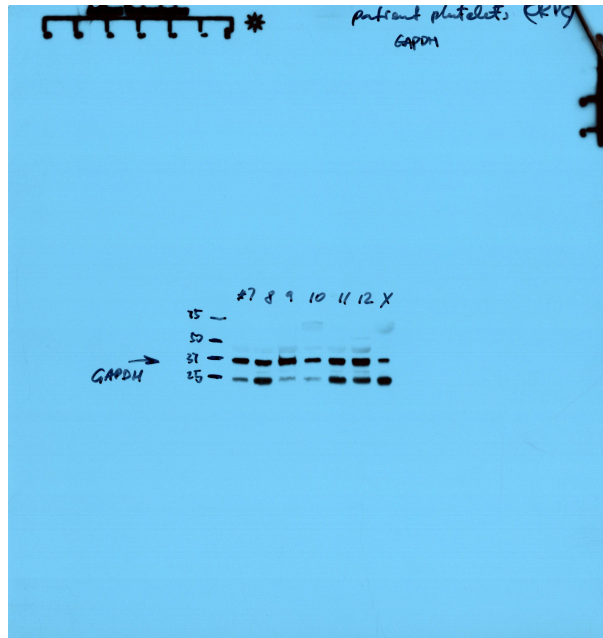
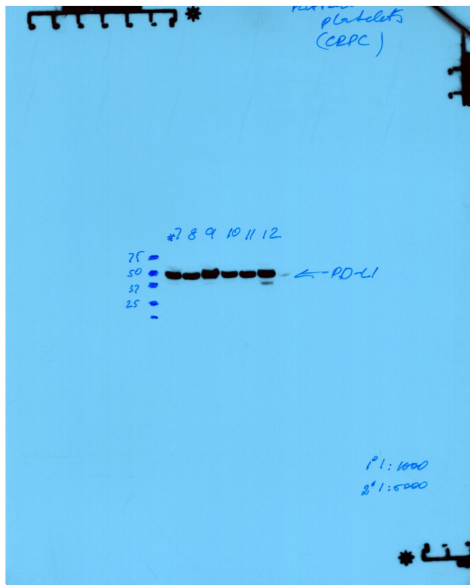
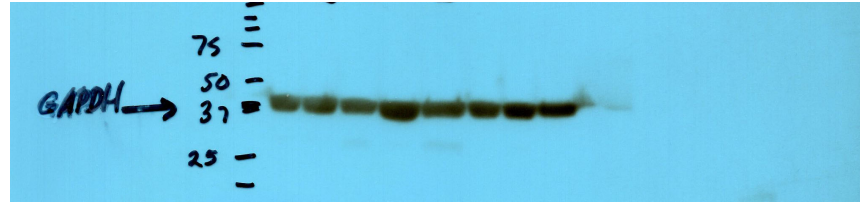
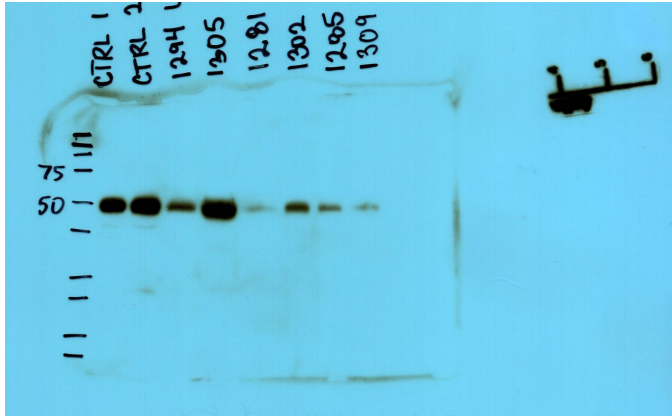
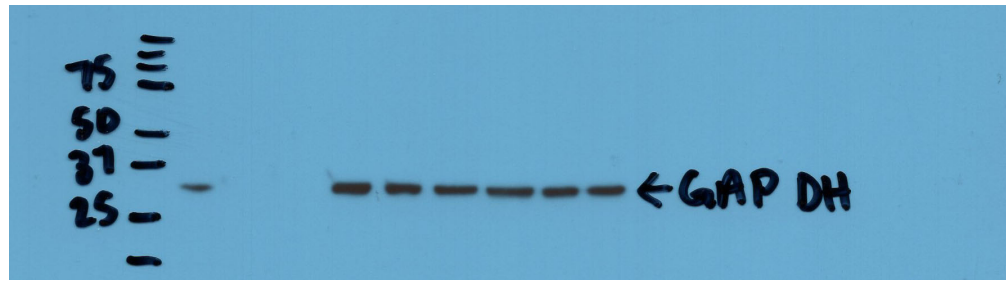
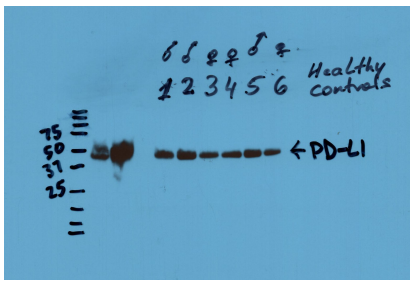
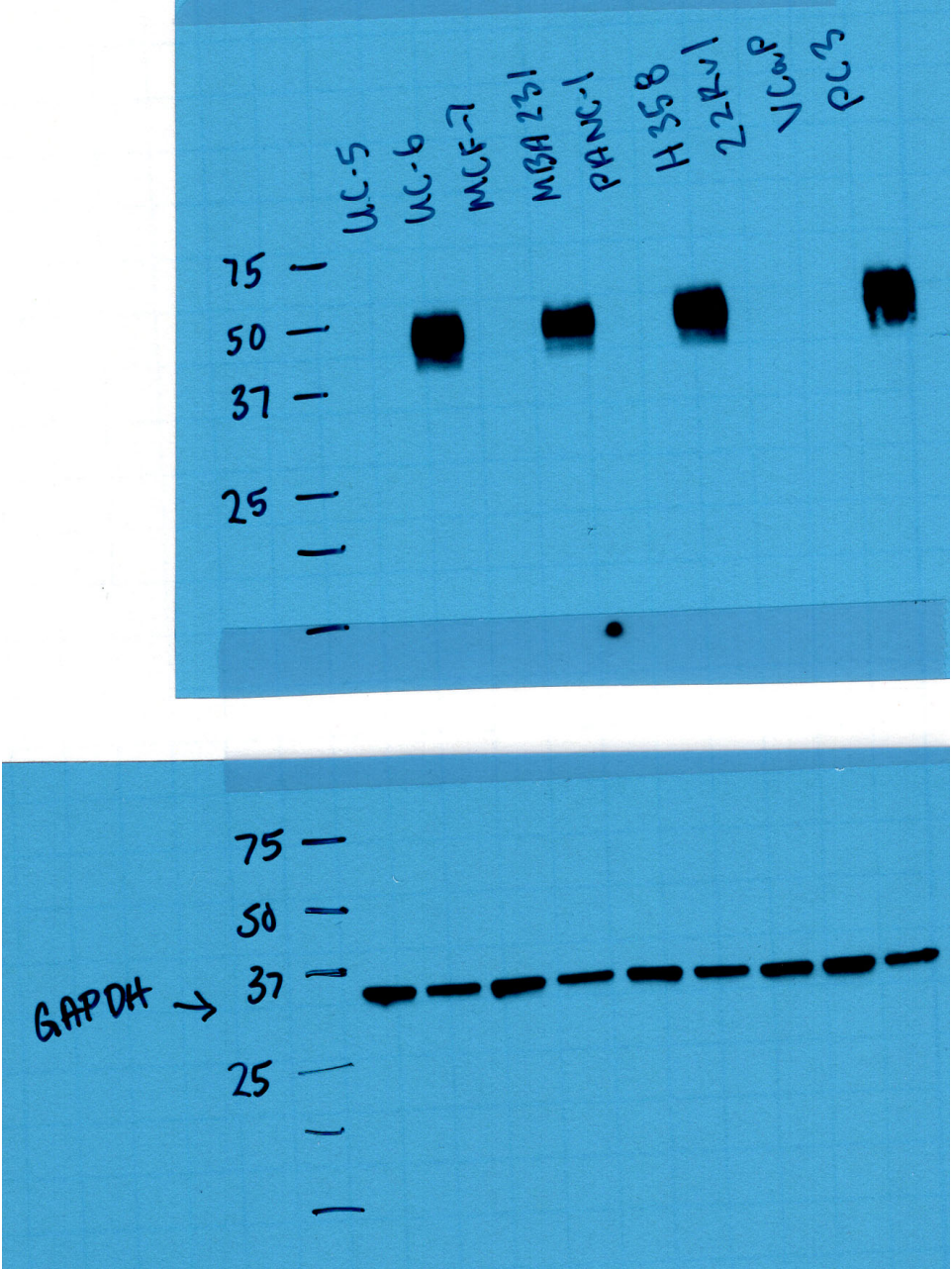


Figure 2 A



Supplemental Figure 2



Supplemental Figure 3 C

