

Supplementary Figure S1, Full-length images of cropped immunoblots in figures

Figure 2a, M28-D5, PDGFR α

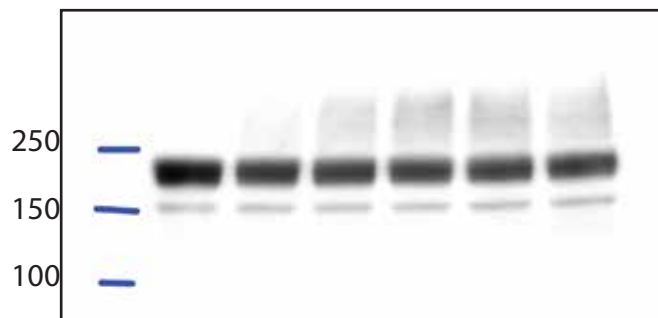


Figure 2b, 2054E, PDGFR α

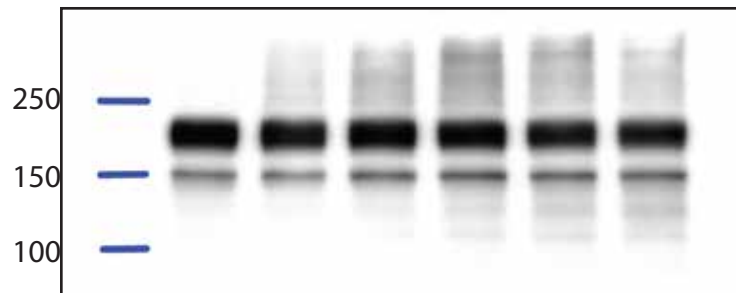


Figure 2a, M28-D5, PDGFR β

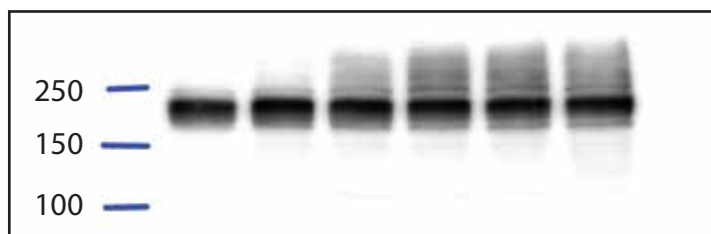


Figure 2b, 2054E, PDGFR β

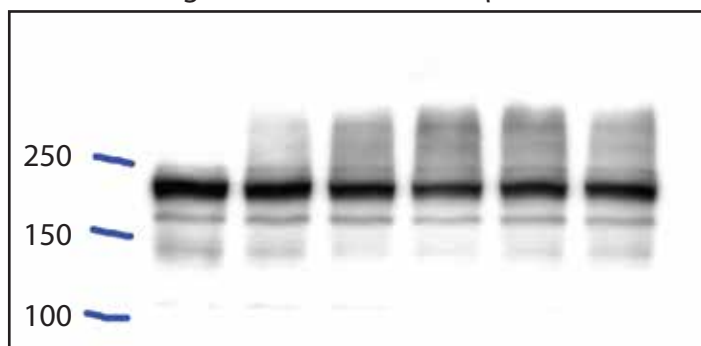


Figure 2a, M28-D5, α -tubulin

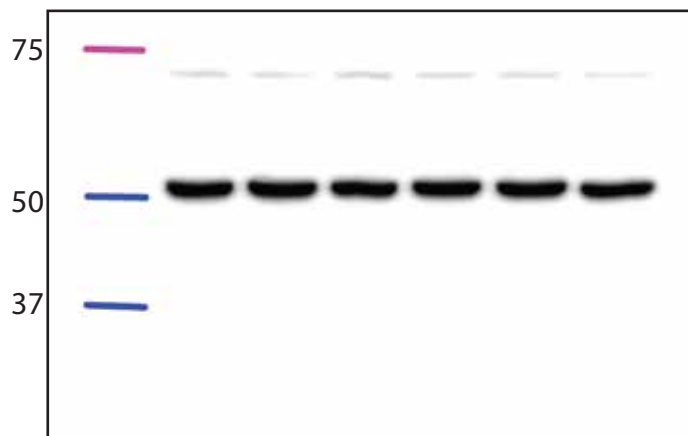
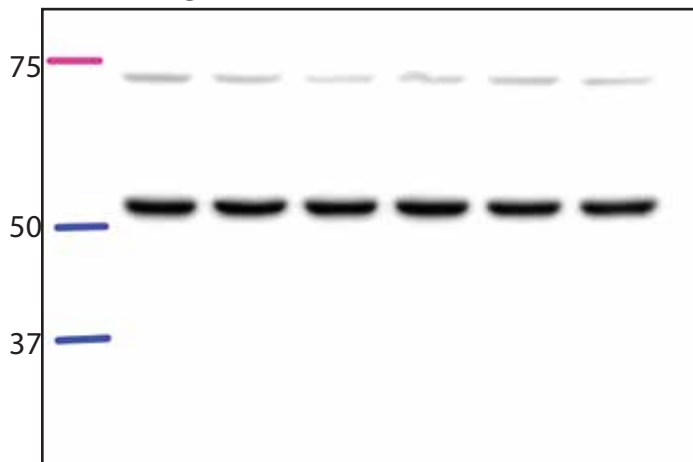
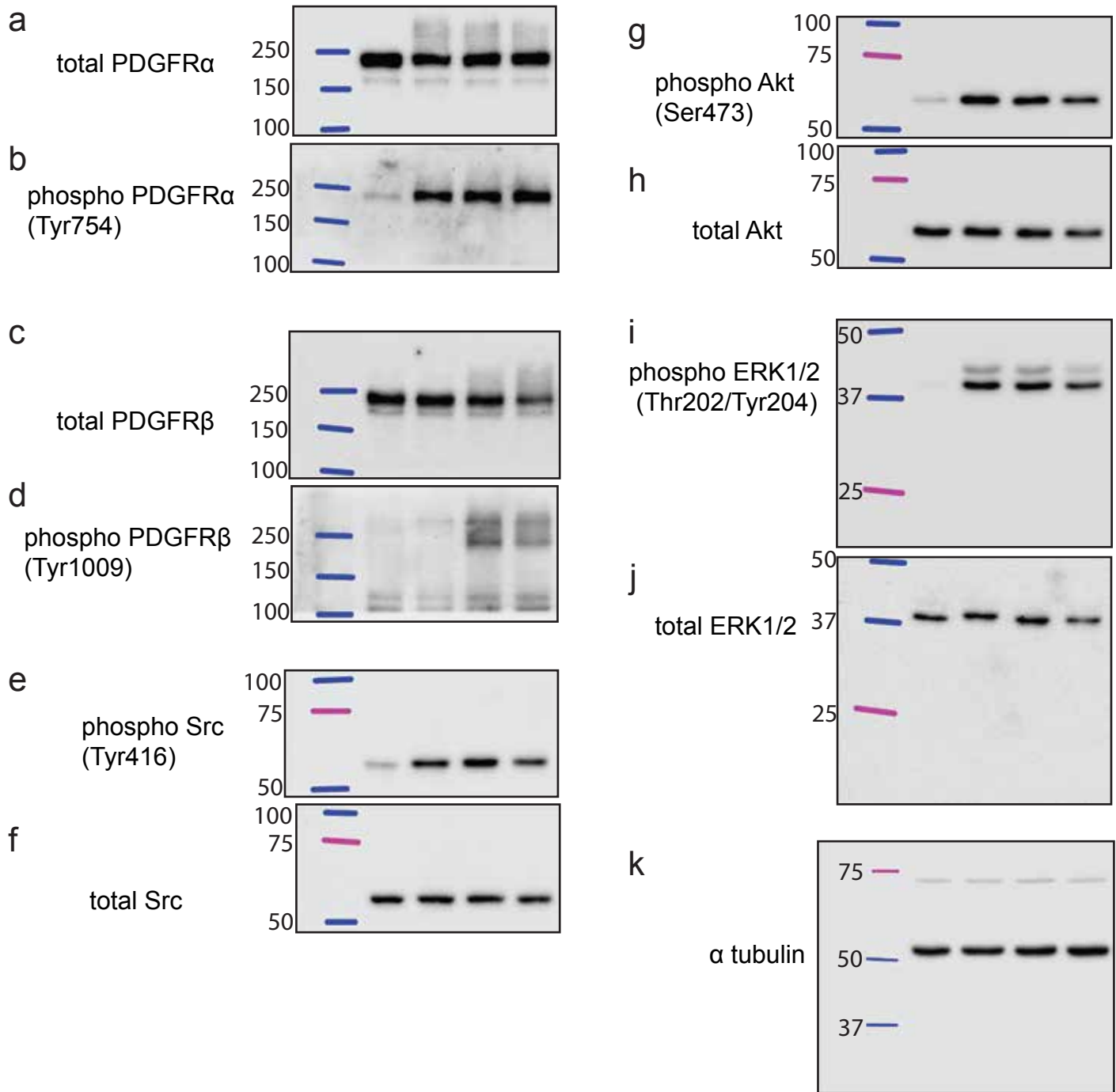


Figure 2b, 2054E, α -tubulin



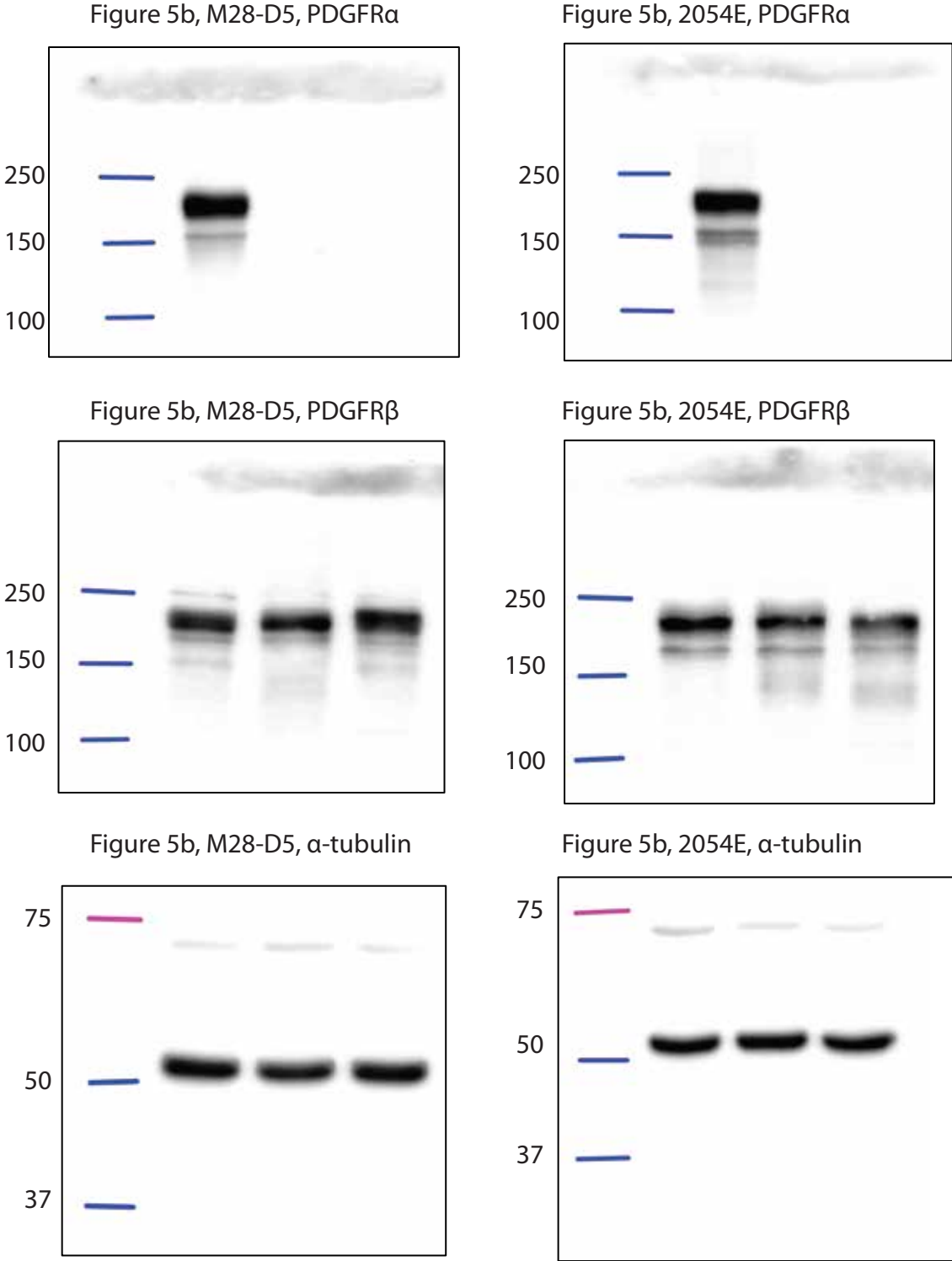
See Figure 2 in the main text for lane labels.

Supplementary Figure S1, Full-length images of cropped immunoblots in figures, continued



See Figure 3 in the main text for lane labels.

Supplementary Figure S1, Full-length images of cropped immunoblots in figures, continued



See Figure 5 in the main text for lane labels.

Supplementary Figure S1, Full-length images of cropped immunoblots in figures, continued

Figure 6a, M28-D5, PDGFR α



Figure 6b, 2054E, PDGFR α

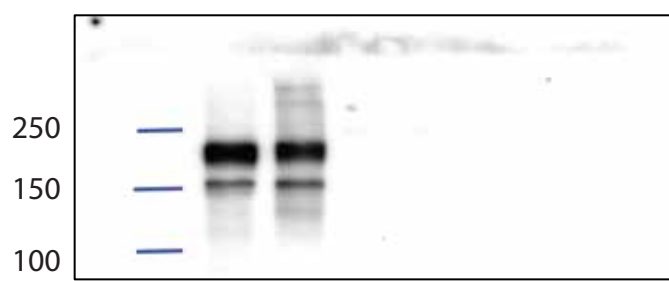


Figure 6a, M28-D5, PDGFR β

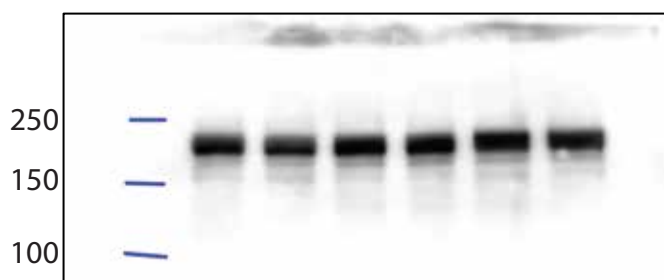


Figure 6b, 2054E, PDGFR β

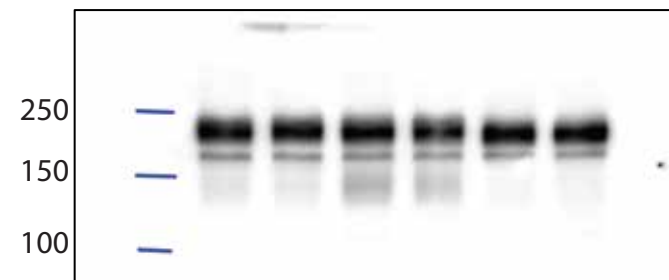


Figure 6a, M28-D5, α -tubulin

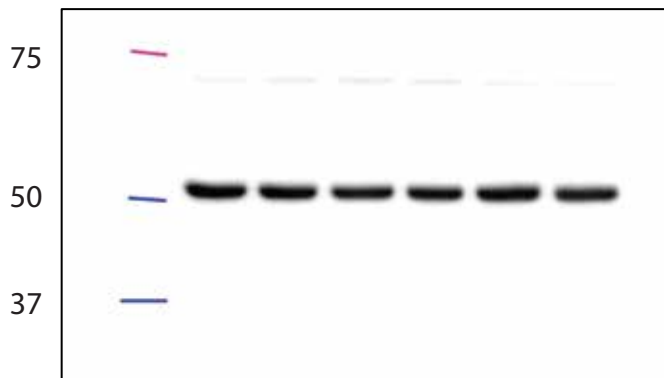
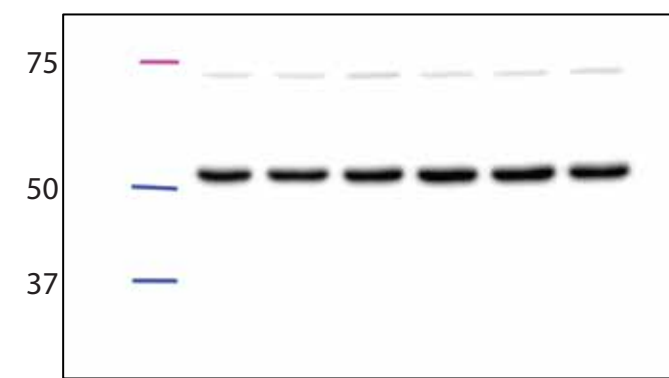


Figure 6b, 2054E, α -tubulin



See Figure 6 in the main text for lane labels.

Supplementary Figure S1, Full-length images of cropped immunoblots in figures, continued

Figure 7a, M28-D5, PDGFR β

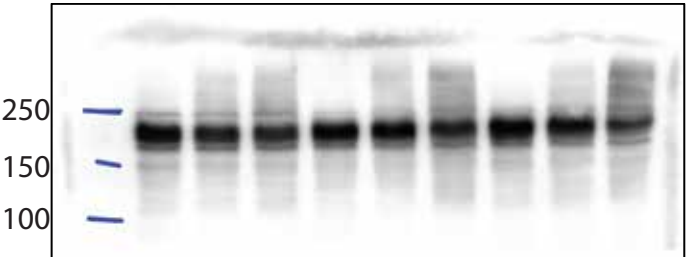


Figure 7b, 2054E, PDGFR β

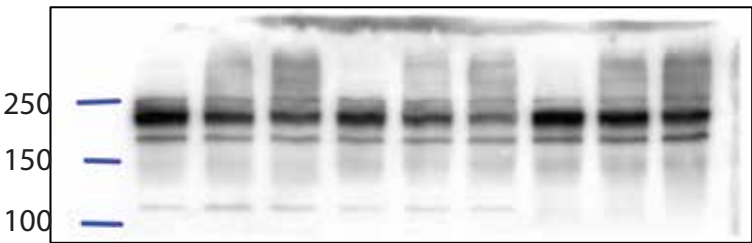


Figure 7a, M28-D5, α -tubulin

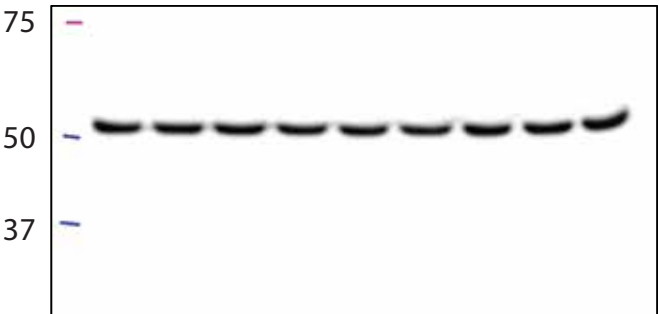
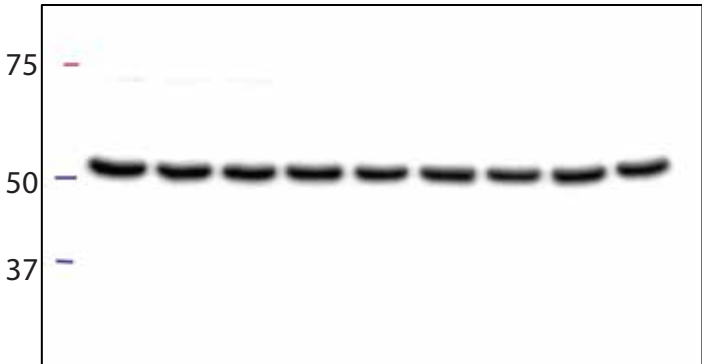


Figure 7b, 2054E, α -tubulin



See Figure 7 in the main text for lane labels.

Genetic analyses in mouse fibroblast and melanoma cells demonstrate novel roles for PDGF-AB ligand and PDGF Receptor alpha

Julie L. Kadrmas^{1,2*}, Mary C. Beckerle^{1,3*} and Masaaki Yoshigi^{4*}

¹Huntsman Cancer Institute, ²Department of Oncological Sciences, ³School of Biological Sciences, ⁴Department of Pediatrics at the University of Utah, Salt Lake City, UT 84112

* corresponding authors: julie.kadrmas@hci.utah.edu, masaaki.yoshigi@hsc.utah.edu, mary.beckerle@hci.utah.edu

SUPPLEMENTARY INFORMATION

Figures S1