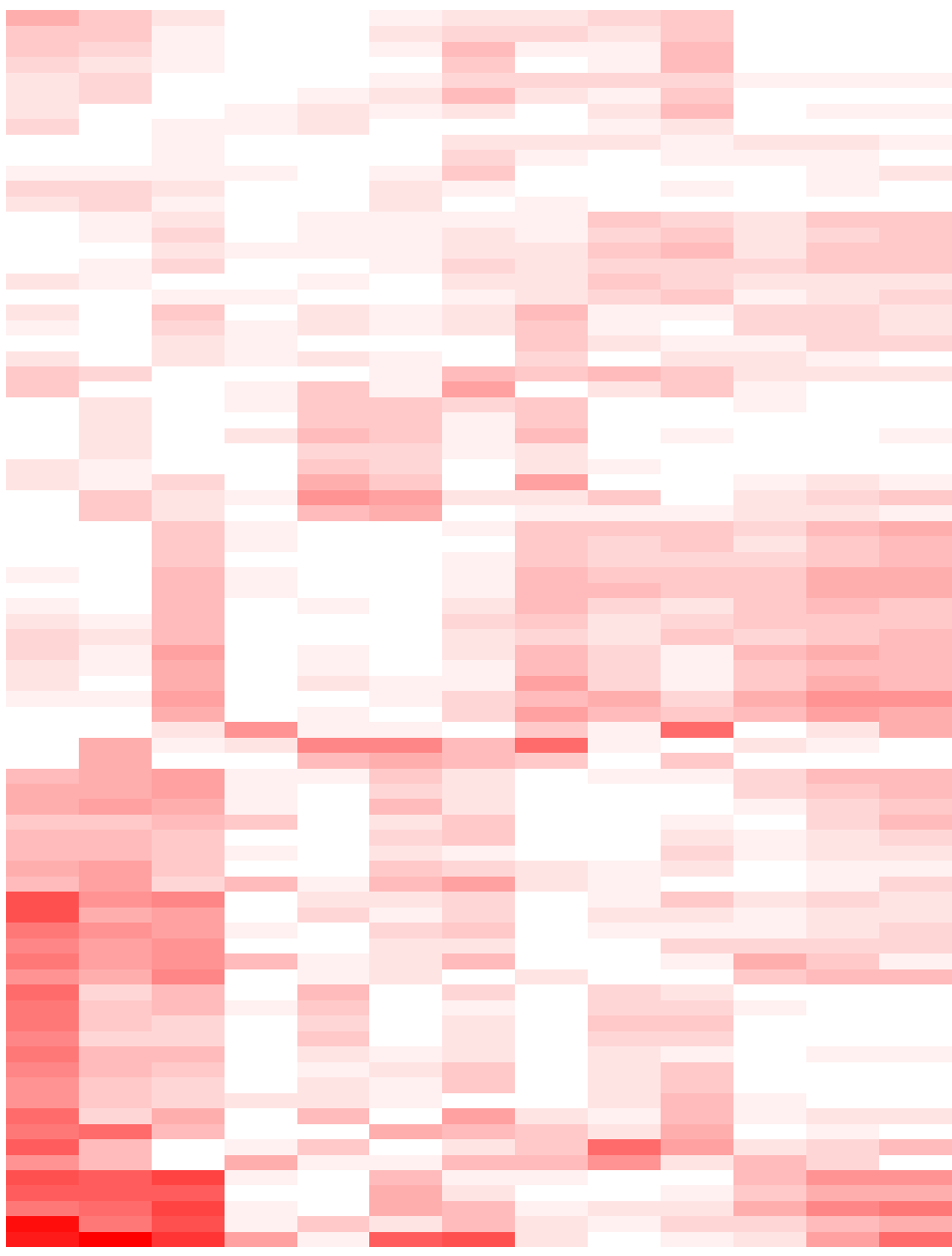
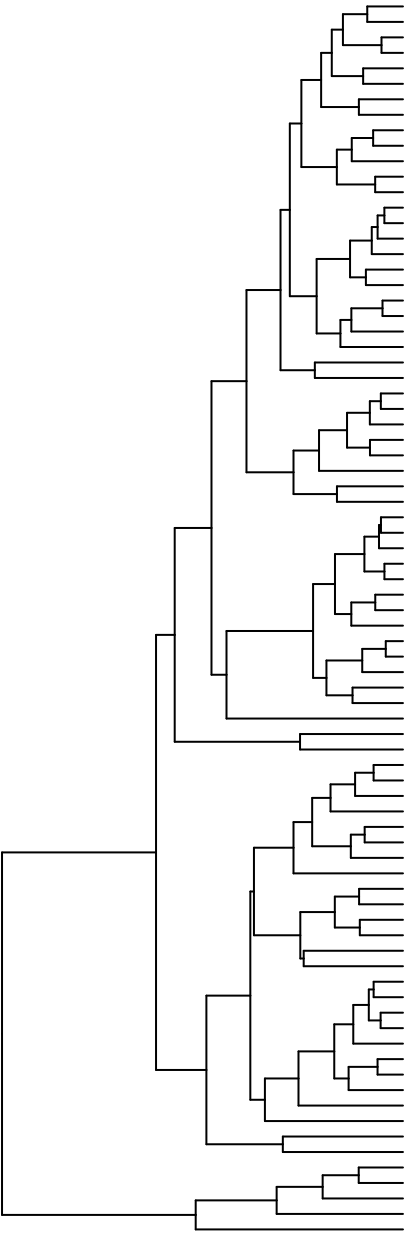
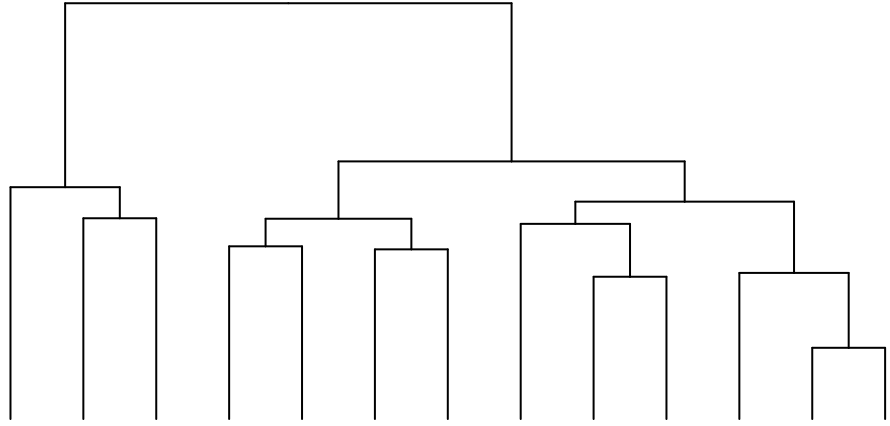
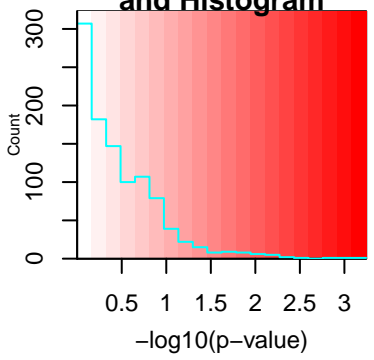


Color Key and Histogram



- MALAT1
- TUG1
- LINC00657
- LINC00094
- NUTM2A-AS1
- LINC00324
- AC104820.2
- GRM5-AS1
- AC000120.7
- ZNRD1-AS1
- SNHG5
- LINC00338
- HOTAIR
- ABCA11P
- RP11-498C9.15
- CTC-444N24.11
- AC007228.9
- LL22NC03-N27C7.1
- RP11-47311.10
- TP73-AS1
- RP11-84C13.1
- RP11-549J18.1
- FGF14-IT1
- RP11-367N14.3
- SNHG16
- PDXDC2P
- SNHG7
- RP1-239B22.5
- MEG3
- XIST
- FAM211A-AS1
- GAS5
- IQCF5-AS1
- RP11-96D1.10
- LRRC37BP1
- HCG18
- SIK3-IT1
- FLJ31306
- FGD5-AS1
- HCG11
- RP11-363E7.4
- NCBP2-AS2
- NEAT1
- CTD-3185P2.1
- OIP5-AS1
- CEP83-AS1
- RP6-24A23.7
- RP11-473M20.16
- LINC00421
- EPB41L4A-AS1
- LINC00667
- RP11-1134I14.8
- LINC00116
- SNHG11
- LINC00635
- LOC653160
- CROCCP2
- LINC00662
- JPX
- MCM3AP-AS1
- GAS5-AS1
- LINC00293
- RP11-29G8.3
- SDCBP2-AS1
- RP11-819C21.1
- HNRNPU-AS1
- FOXN3-AS2
- DLEU2
- AC068196.1
- CTC-487M23.5
- RP11-383G2.4
- RP11-38P22.2
- RP11-399K21.11
- NAV2-AS5
- A2ML1-AS1
- MZF1-AS1
- ZFAS1
- SENP3-EIF4A1
- RP11-325K4.3
- RP11-282O18.3

- Mild asthma vs. Severe asthma
- Severe asthma vs. Control
- COPD vs. Severe asthma
- Allergic asthma vs. Nonallergic asthma
- Mild asthma vs. Control
- Asthma vs. Control
- All. sev. asthma vs. Nonall. sev. asthma
- COPD vs. Control
- Mild asthma vs. COPD
- All. mild asthma vs. Nonall. mild asthma
- Allergic asthma vs. COPD
- Asthma vs. COPD
- Nonallergic asthma vs. COPD