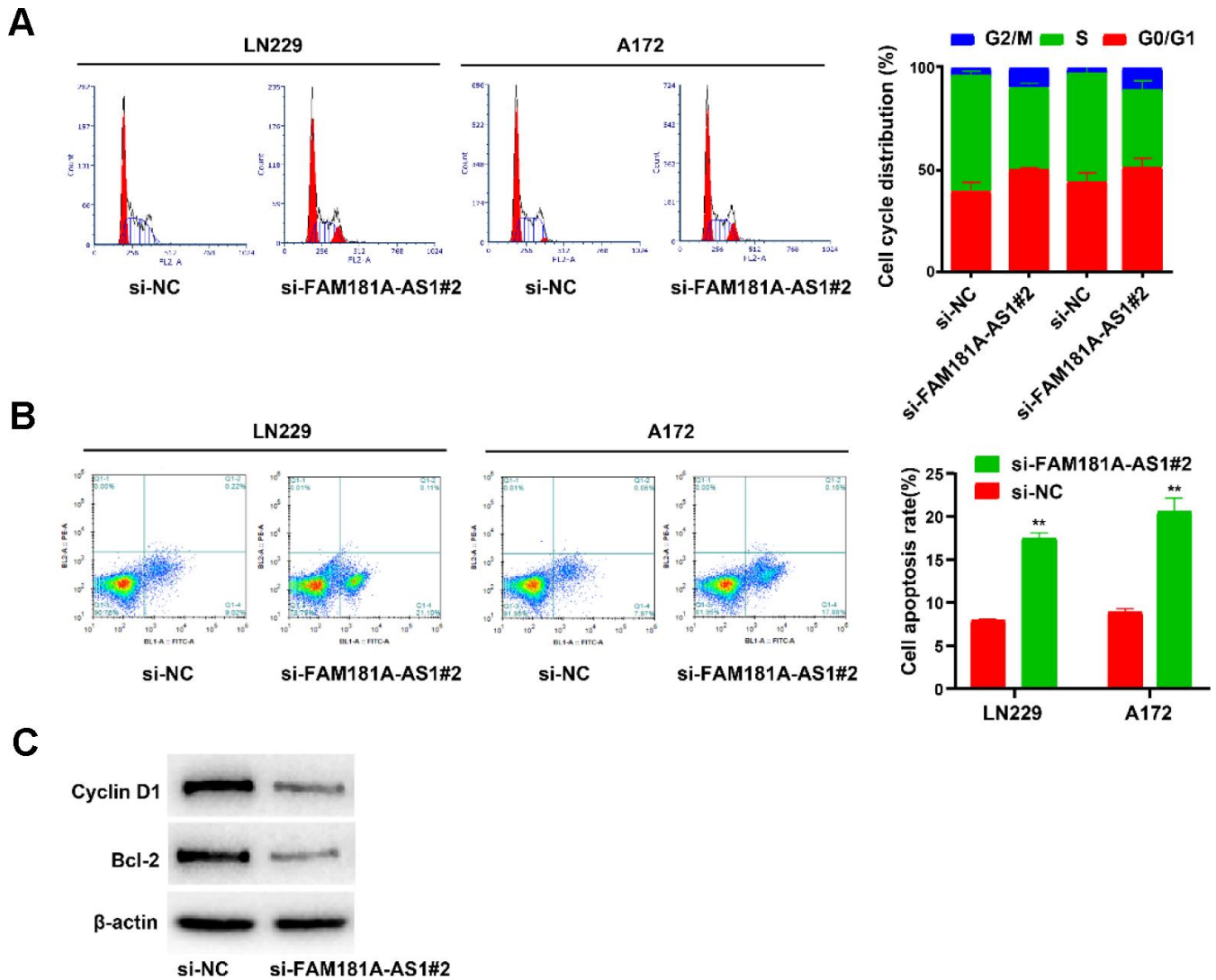


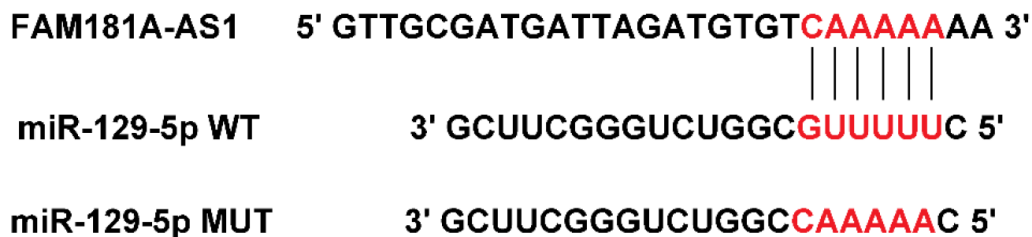
SUPPLEMENTARY FIGURES

Supplementary Figures

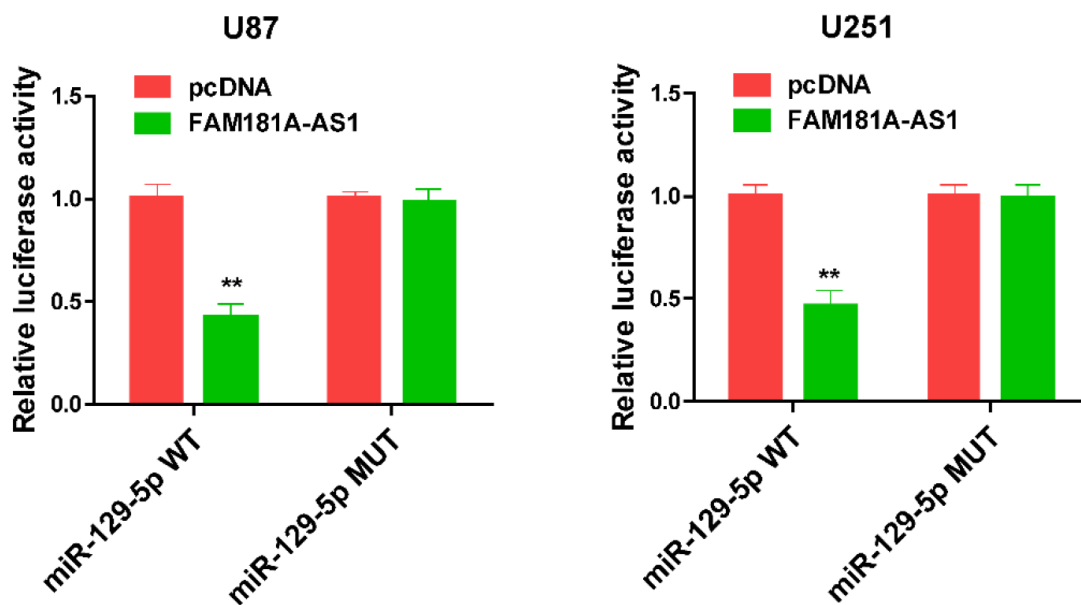


Supplementary Figure 1. *FAM181A-AS1* downregulation inhibits cell cycle and promotes cell apoptosis. (A) Cell cycle was detected. Cytometry showed the cells were arrested in G0/G1 phase after treated with *FAM181A-AS1* siRNA in LN229 and A172 cells. (B) Cell apoptosis was detected. Cytometry showed the downregulation of *FAM181A-AS1* promoted the apoptosis of LN229 and A172 cells. (C) Western blot showing that knockdown of *FAM181A-AS1* downregulated the expression of Cyclin D1 and Bcl-2. ** $P < 0.01$, data represent the mean \pm SD.

A



B



Supplementary Figure 2. The effect of *FAM181A-AS1* overexpression on the luciferase activity of miR-129-5p WT or MUT. (A) Images of the linking sites between *FAM181A-AS1* and miR-129-5p WT/MUT. (B) Assessment of the luciferase activity of miR-129-5p WT/MUT subsequent to transfection of U87 and U251 cell lines with *FAM181A-AS1* overexpression plasmid. ** $P < 0.01$, data represent the mean \pm SD.