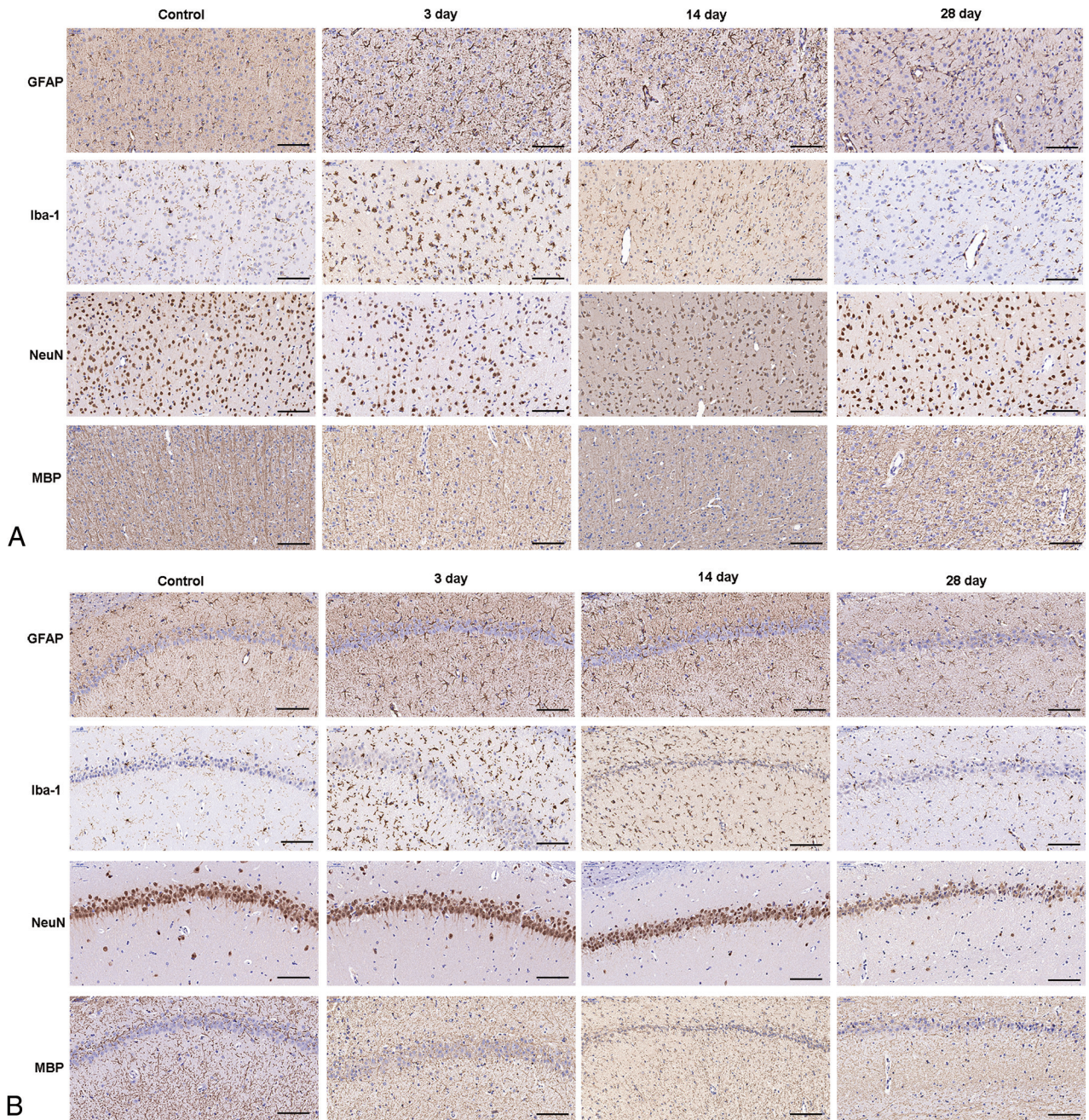
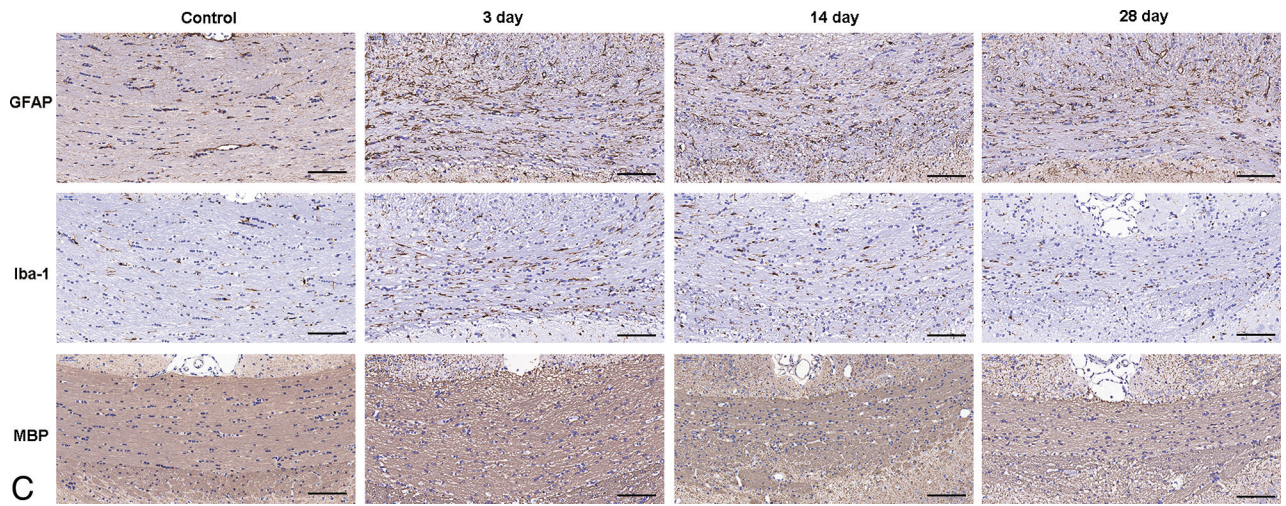


ON-LINE FIG 1. FA, MD, and MK maps of representative rat brains at preinjury and 3, 14, and 28 days after TBI.



ON-LINE FIG 2. IHC of NeuN, GFAP, Iba-1, and MBP using DAB (3, 3'-diaminobenzidine) for staining in the ipsilateral perilesional cortex (A), ipsilateral hippocampus (B), and callosum (C) in representative control and TBI rat brain sections. Scale bar = 100 μ m.



ON-LINE FIG 2. Continued.