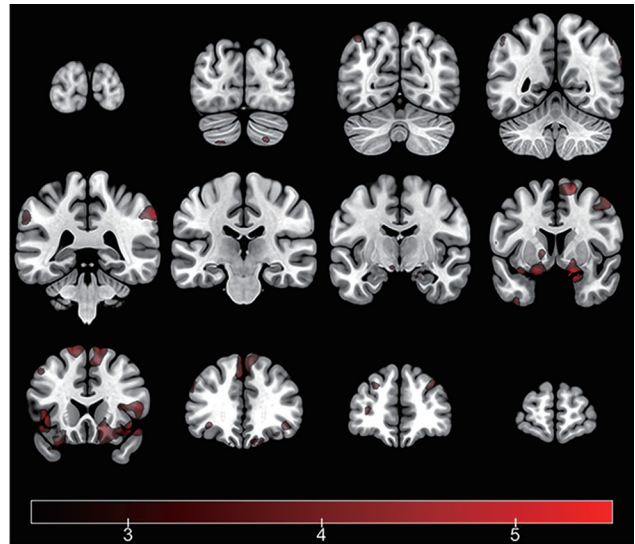


A



B

**ON-LINE FIGURE.** Coronal representation of average brain activation maps of the healthy control group (A) and the traumatic anosmia group (B) in response to the citral stimuli (1-sample  $t$  test, voxelwise threshold false discovery rate–corrected  $P < .05$ ) ( $t$  values in a color scale). The traumatic anosmia group shows more widespread activation in the orbitofrontal cortex, insula, and multiple bilateral cortical association areas than the healthy control group. The left side of the brain is presented on the left side of the image, according to neurologic convention.

**On-line Table 1: Differences in olfaction-induced brain activation between patients with traumatic anosmia and healthy control subjects**

Stimulation/Area	MNI Coordinates			Activation Size (Voxels)	T Value
	X	Y	Z		
Citral					
Left frontal subgyral white matter	-20	-20	46	85	4.74
BME					
Left middle temporal gyrus	-62	-18	-10	5717	5.99
Right middle temporal gyrus	68	-2	-14	1272	5.80
Left medial frontal gyrus	-4	40	48	719	4.99
Right middle temporal gyrus	70	-42	0	683	5.01
Right cerebellum	44	-42	44	454	6.00
Left postcentral gyrus	-52	-12	24	481	5.00
Right fusiform gyrus	34	-74	-12	437	4.64
Left middle frontal gyrus	-42	16	28	380	4.34
Right precentral gyrus	60	-6	24	204	4.09
Left middle frontal gyrus	-32	16	50	190	4.13
Right middle frontal gyrus	36	20	42	185	4.05
Left uncus	-30	6	-46	183	4.68
Right inferior temporal gyrus	46	6	-50	174	4.79
Left middle temporal gyrus	-34	-68	26	164	4.03
Right superior temporal gyrus	46	-46	10	57	3.81
Left superior parietal lobule	-24	-70	58	57	4.31
Right fusiform gyrus	38	-52	-18	42	3.85
Right middle frontal gyrus	48	30	20	30	3.71
Right paracentral lobule	6	-44	64	25	3.81
Right superior temporal gyrus	68	-28	8	21	3.80
Right uncus	26	2	-48	14	3.60
Left lingual gyrus	-14	-86	-10	13	3.54
Right superior frontal gyrus	16	48	22	8	3.58
Left middle frontal gyrus	-34	-8	64	8	3.44

**On-line Table 2: Correlations between brain activation and KVSS II score in patients with traumatic anosmia**

Stimulation/Area	MNI Coordinates			Activation Size (Voxels)	T Value
	X	Y	Z		
Citral					
Left fusiform gyrus	-40	-42	-18	36	5.58
Right postcentral gyrus	22	-32	50	18	4.64
Left insula	-30	-24	16	5	3.95
Left precentral gyrus	-32	-16	56	5	4.13
BME					
Left middle temporal gyrus	-72	-18	-16	104	5.46
Left middle occipital gyrus	-32	-72	2	48	4.80
Right cerebellum	48	-46	44	28	4.91
Right middle temporal gyrus	66	-2	-18	18	4.40
Left middle frontal gyrus	-20	-14	50	10	4.36
Left insula	-36	-16	16	6	4.14