

**On-line Table 1: Patient characteristics<sup>a</sup>**

	Hemorrhagic Transformation (n = 8)	Contrast Staining (n = 9)	Total (n = 17)	P
Sex				.091
Male	6 (75.00%)	2 (22.22%)	8 (47.06%)	
Female	2 (25.00%)	7 (77.78%)	9 (52.94%)	
Mean age (yr)	68.38 ± 8.73	75.22 ± 12.11	72.00 ± 10.91	.206
Atrial fibrillation	4 (50.00%)	4 (44.44%)	8 (47.06%)	1.000
High blood pressure	4 (50.00%)	7 (77.78%)	11 (64.71%)	.492
Diabetes mellitus	2 (25.00%)	2 (22.22%)	4 (23.53%)	1.000
Dyslipidemia	0 (0.0%)	1 (11.11%)	1 (5.88%)	1.000
Intravenous therapy	6 (75.00%)	8 (88.89%)	14 (82.35%)	.910
Recanalization, TIC1 score				.250
0	0 (0.0%)	2 (22.22%)	2 (11.76%)	
1	0 (0.0%)	1 (11.11%)	1 (5.88%)	
2a	0 (0.0%)	0 (0.0%)	0 (0.0%)	
2b	1 (12.50%)	2 (22.22%)	3 (17.65%)	
3	7 (87.50%)	4 (44.44%)	11 (64.71%)	
Time from symptom onset to revascularization (mean) (min)	284.75 ± 42.16	288.38 ± 44.41	286.56 ± 41.87	.869
NIHSS score, pretreatment	16.0 [12.5–18.5]	16.0 [15.0–17.0]	16.0 [15.0–18.0]	.846
NIHSS score, discharge	4.0 [3.0–13.0]	8.0 [4.0–14.0]	5.0 [4.0–14.0]	.407
Median mRS score, pretreatment	0.0 [0.0–0.5]	0.0 [0.0–1.0]	0.0 [0.0–1.0]	.811
Median mRS score, discharge	5.0 [3.5–5.0]	4.0 [3.0–5.0]	4.0 [3.0–5.0]	.471
Median mRS score, 90 days	3.0 [2.5–3.5] <sup>b</sup>	3.0 [2.0–3.0]	3.0 [2.0–3.0]	.940
Hemorrhagic transformation	8 (100.00%)	0 (0.00%)	8 (47.06%)	.001
HI type 1	0 (0.00%)	0 (0.00%)	0 (0.00%)	
HI type 2	5 (62.50%)	0 (0.00%)	5 (29.41%)	
PH type 1	1 (12.50%)	0 (0.00%)	1 (5.88%)	
PH type 2	2 (25.00%)	0 (0.00%)	2 (11.76%)	
Symptomatic ICH	1 (12.50%)	0 (0.00%)	1 (5.88%)	.952

**Note:**—ICH indicates intracerebral hemorrhage; HI, hemorrhagic infarction according to the ECASS criteria; PH, parenchymal hematoma according to the ECASS criteria.

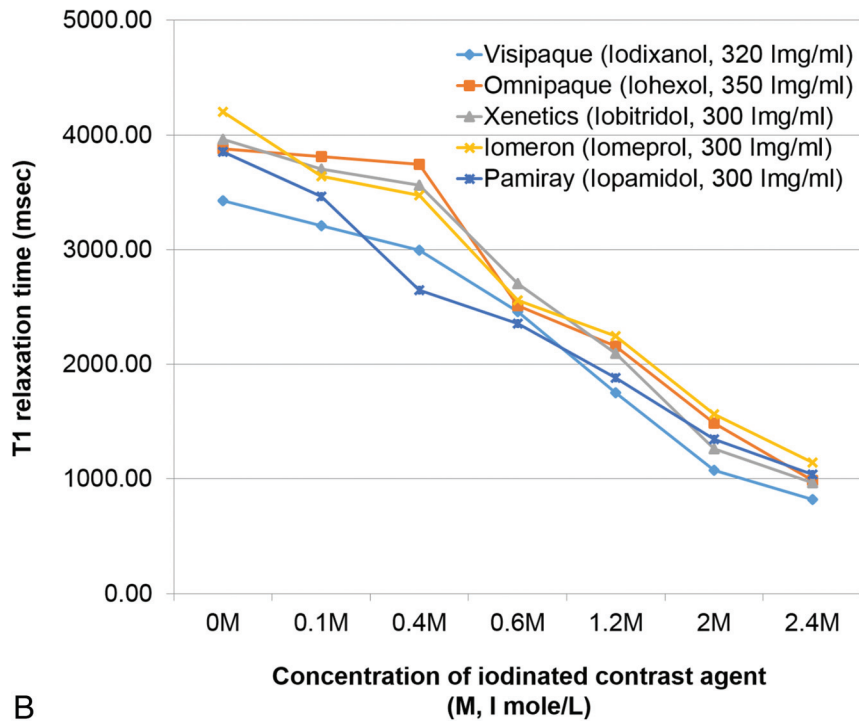
<sup>a</sup> Values are numbers of patients with percentages in parentheses for categoric variables and mean ± SD for continuous variables. Numbers in brackets are interquartile range.

<sup>b</sup> Seven patients were analyzed for the final study (with the loss of 1 patient during the follow-up).

**On-line Table 2: Outcomes of contrast staining on last imaging study**

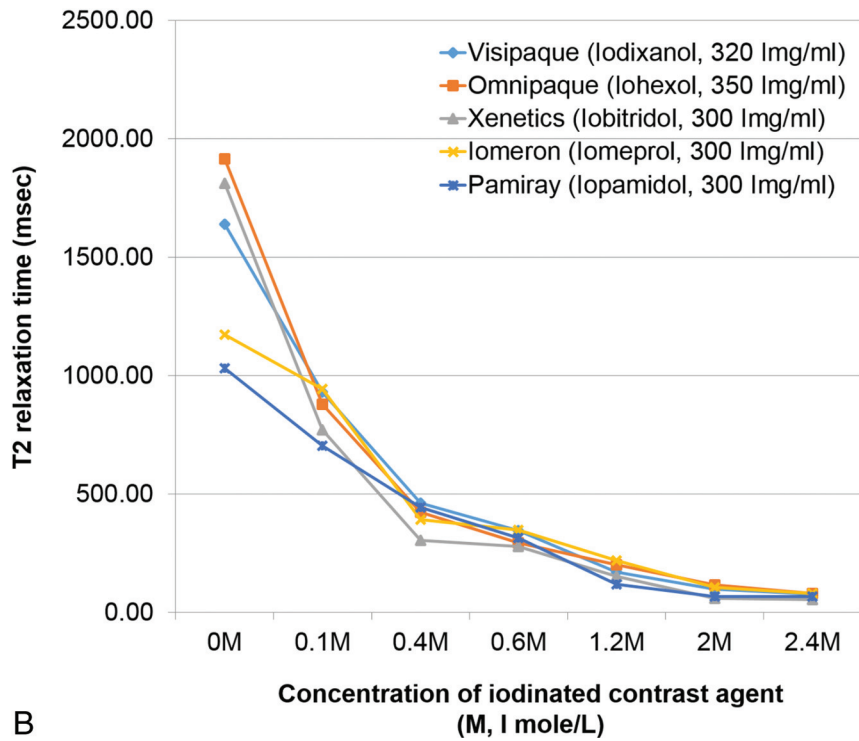
Outcome	No.	Percentage (%)
Infarction	7	77.78
Return to normal structure	2	22.22

Concentration of contrast (M, I mole/L)	0 M	0.1 M	0.4 M	0.6 M	1.2 M	2 M	2.4 M
Visipaque (Iodixanol, 320 I mg/ml)							
Omnipaque (Iohexol, 350 I mg/ml)							
Xenetics (Iobitridol, 300 I mg/ml)							
Iomeron (Iomeprol, 300 I mg/ml)							
Pamiray (Iopamidol, 300 I mg/ml)							
	3425.17	3205.13	2994.01	2457.00	1751.31	1074.11	819.00
	3875.55	3610.11	3745.32	2512.56	2155.17	1488.10	985.22
	3959.64	3703.70	3558.72	2702.70	2092.05	1262.63	965.25
	4200.46	3636.36	3472.22	2557.54	2247.19	1562.50	1144.16
	3852.59	3460.21	2645.50	2352.94	1879.70	1345.90	1039.50

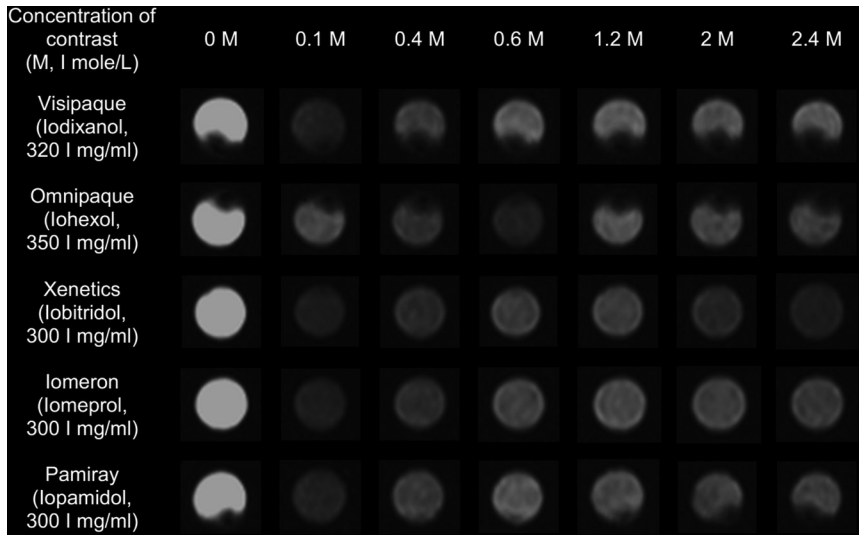


**ON-LINE FIG 1.** MR signal intensities of 5 different kinds of iodinated contrast agents on T1-weighted imaging. A, Images from the phantom. B, T1-relaxation times of 5 different kinds of iodinated contrast agents at different concentrations.

Concentration of contrast (M, I mole/L)	0M	0.1M	0.4M	0.6M	1.2M	2M	2.4M
Visipaque (Iodixanol, 320 I mg/ml)							
	1639.42	929.53	459.64	343.18	169.95	95.79	75.32
Omnipaque (Iohexol, 350 I mg/ml)							
	1913.25	878.20	422.70	292.39	199.01	114.48	78.24
Xenetics (Iobitridol, 300 I mg/ml)							
	1812.03	770.09	303.01	277.85	151.92	58.71	52.77
Iomeron (Iomeprol, 300 I mg/ml)							
	1171.65	941.85	390.16	346.06	217.79	105.29	78.45
Pamiray (Iopamidol, 300 I mg/ml)							
	1030.54	703.65	441.29	314.57	118.44	66.00	66.82



**ON-LINE FIG 2.** MR signal intensities of 5 different kinds of iodinated contrast agents on T2-weighted imaging. A, Images from the phantom. B, T2-relaxation times of 5 different kinds of iodinated contrast agents at different concentrations.



**ON-LINE FIG 3.** MR signal intensities of 5 different kinds of iodinated contrast agents on gradient recalled-echo imaging.