

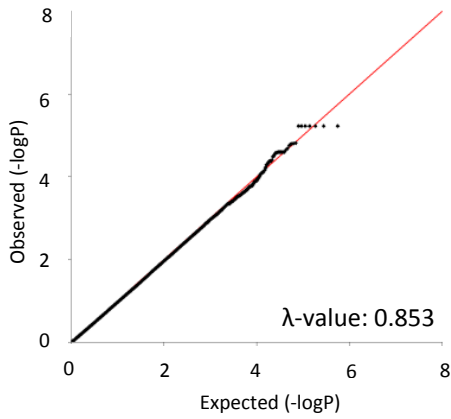
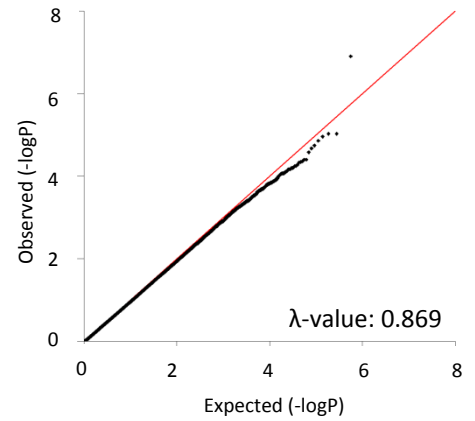
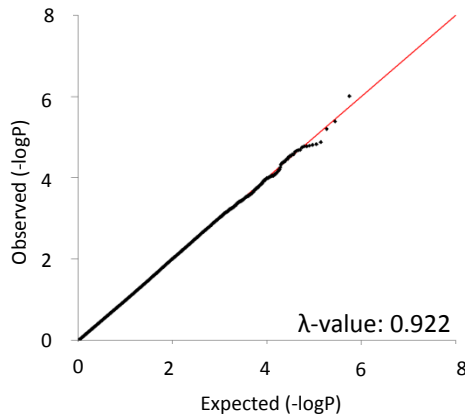
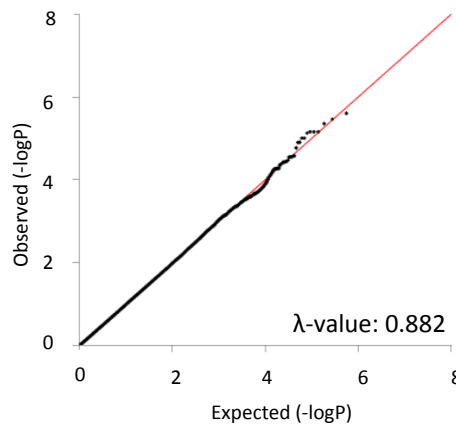
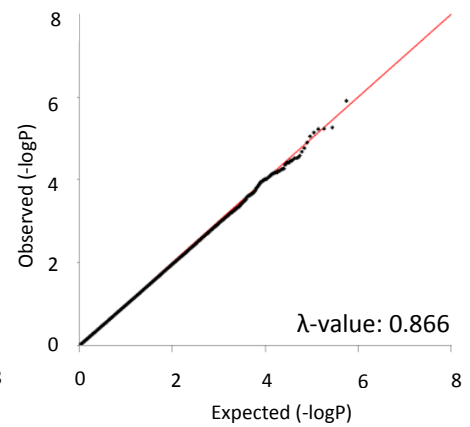
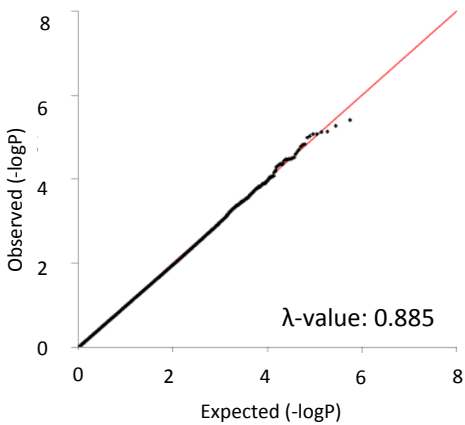
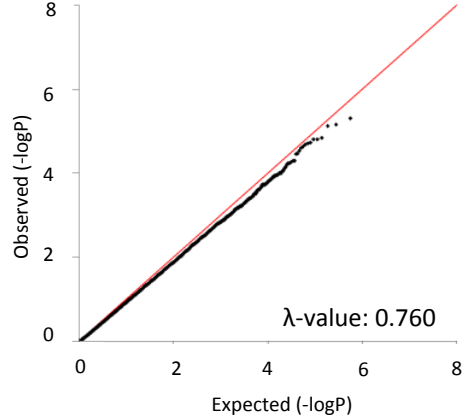
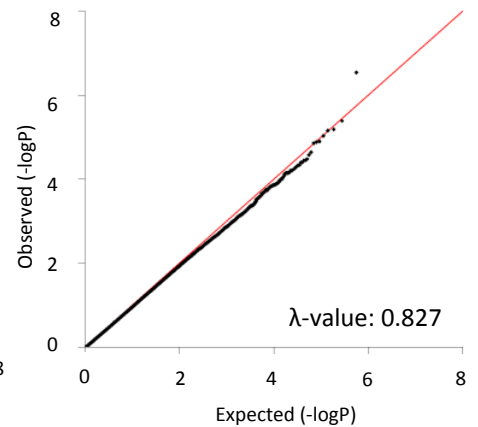
Cyclophosphamide**Paclitaxel + Carboplatin****All Platinum-based****Cisplatin****Carboplatin****Anthracyclin-based****Adriacin****Epirubicin**

Fig. S1: Quantile-quantile plots of 17 GWAS of drugs/drug subgroups induced severe neutropenia and their corresponding lambda (λ) value (continue)

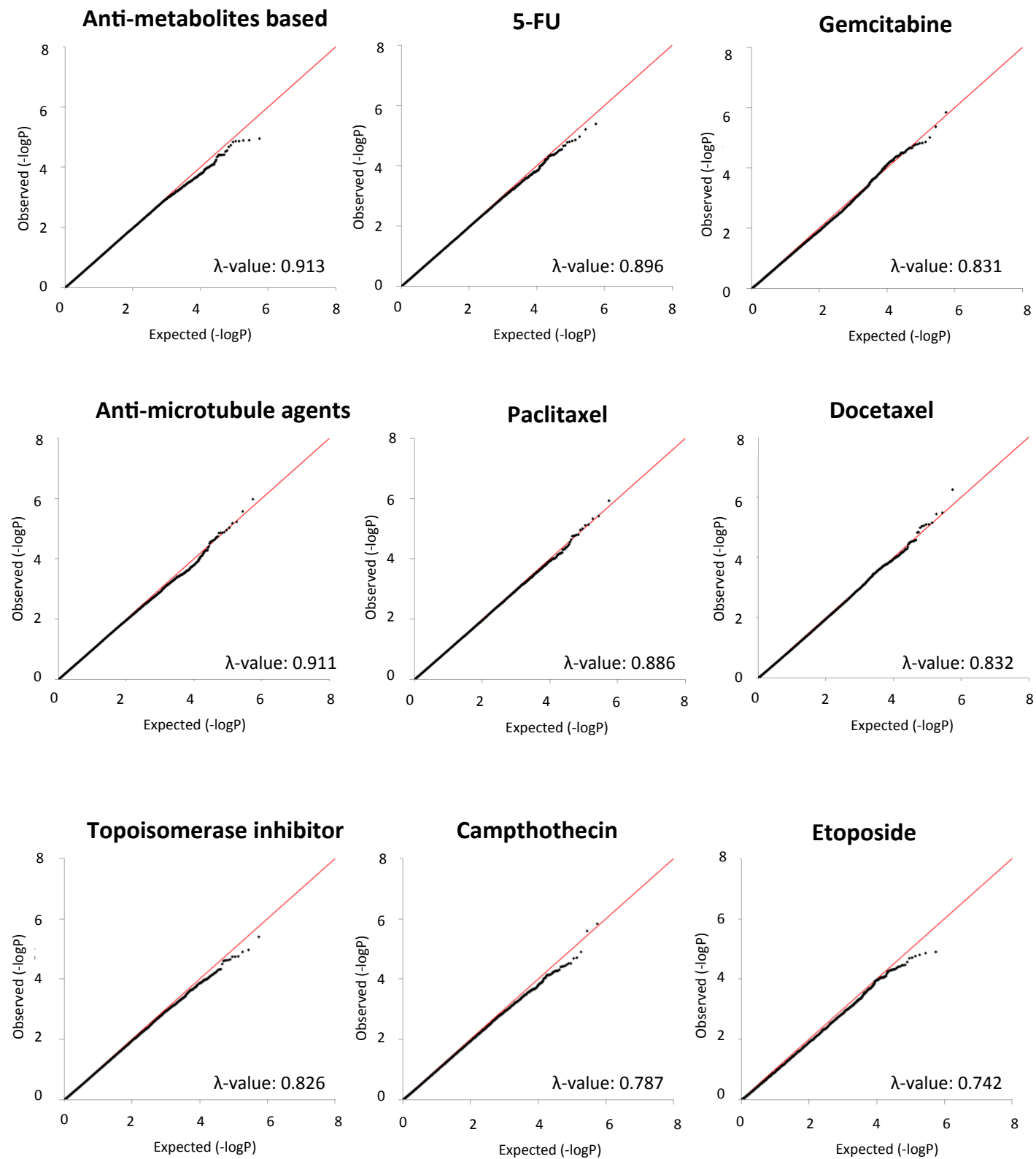
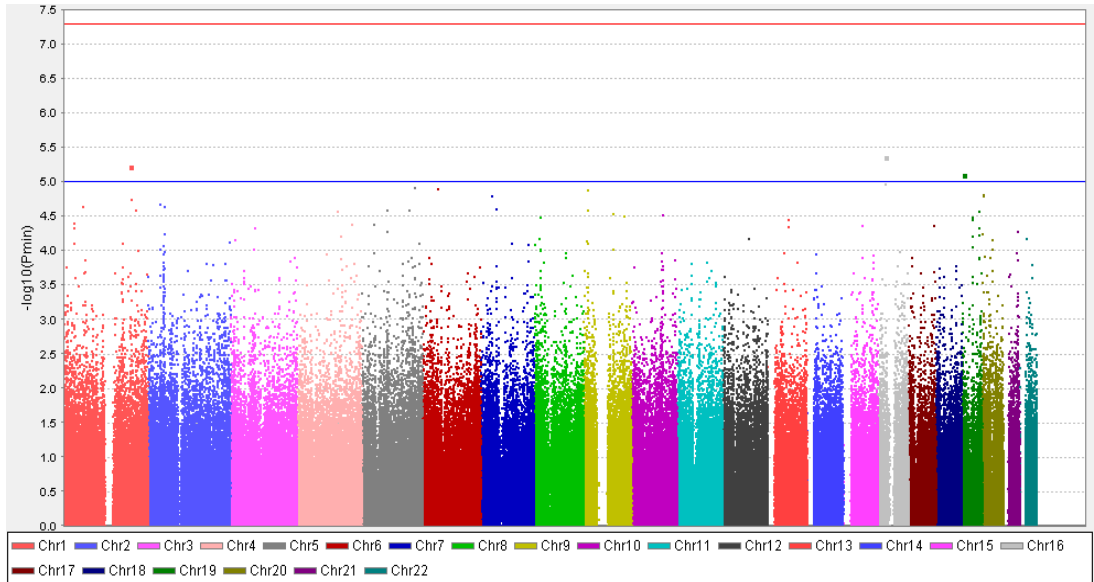


Fig. S1: Quantile-quantile plots of 17 GWAS of drugs/drug subgroups induced severe neutropenia and their corresponding lambda (λ) value

Cyclophosphamide



Paclitaxel + Carboplatin

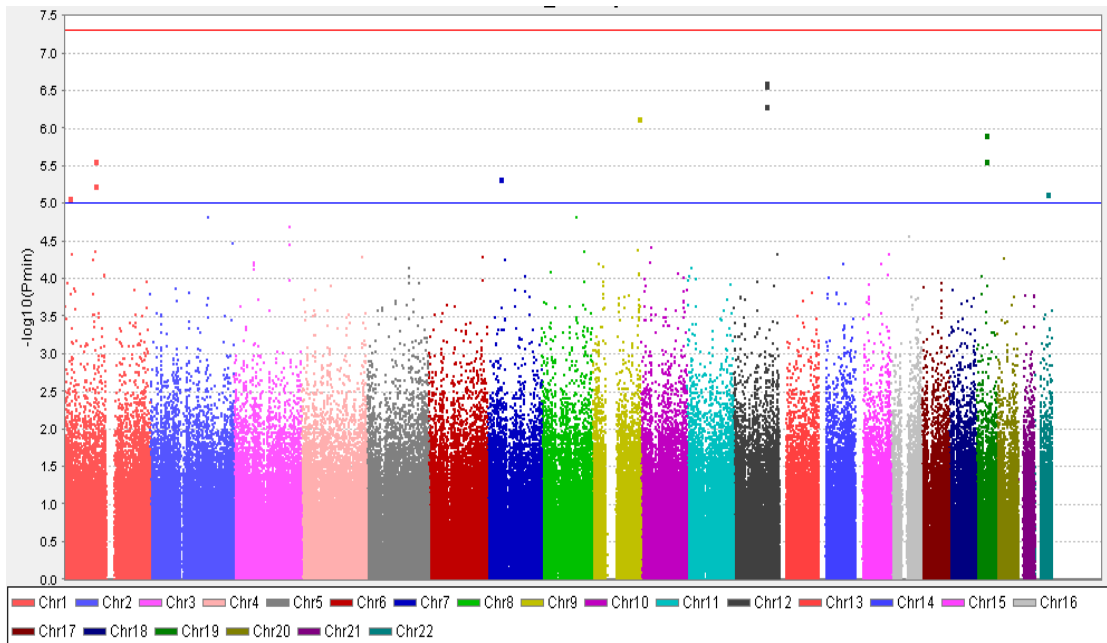
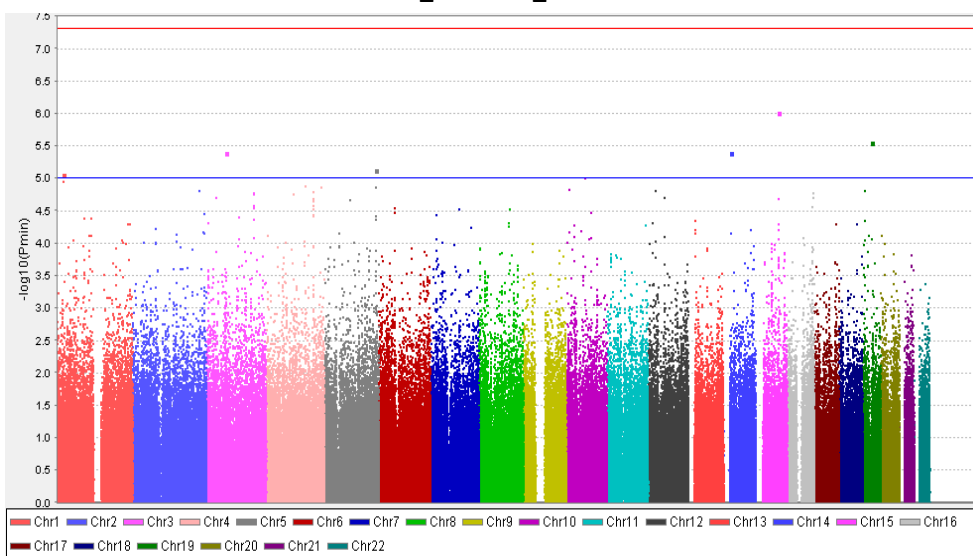
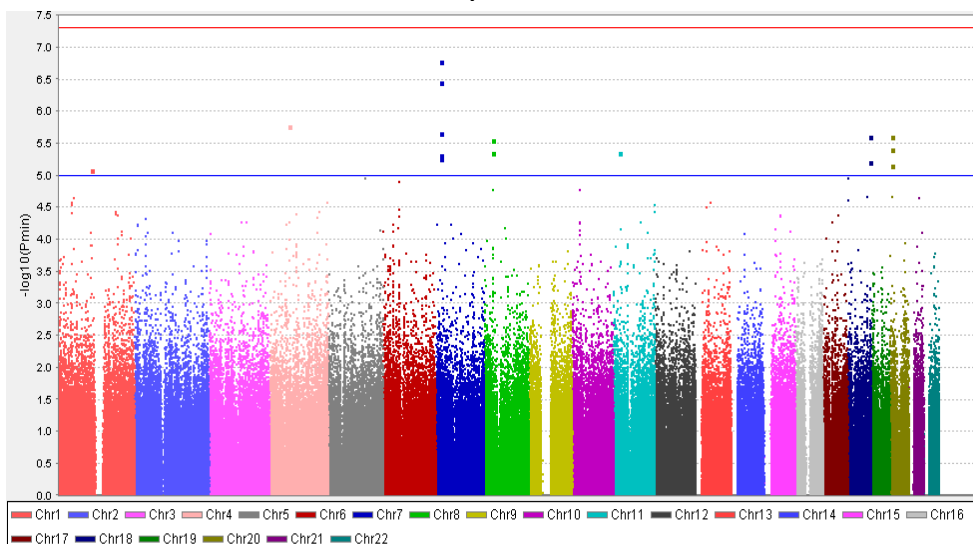


Fig. S2a: Manhattan plot for GWAS of cyclophosphamide and paclitaxel + carboplatin induced severe neutropenia/leucopenia

All_Platinum_based



Cisplatin



Carboplatin

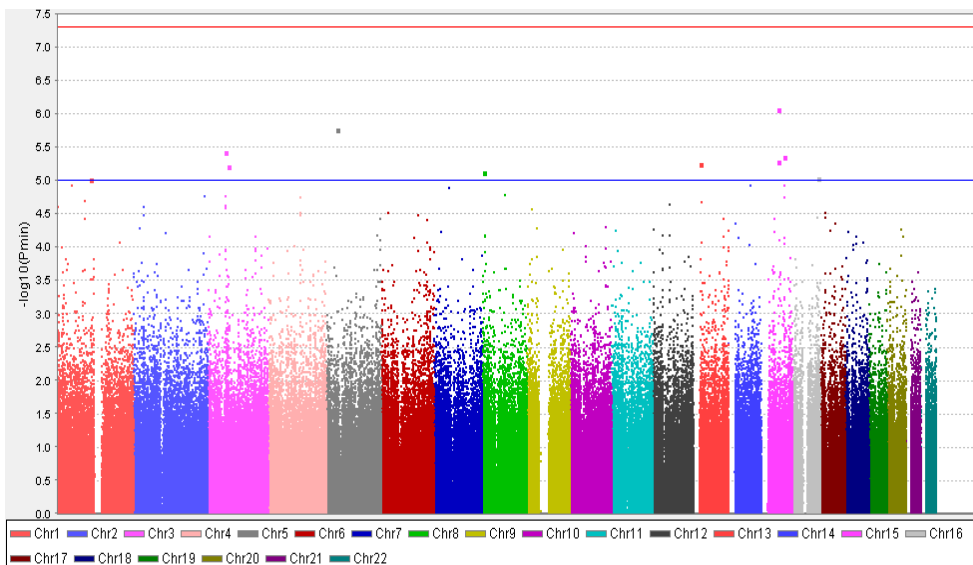
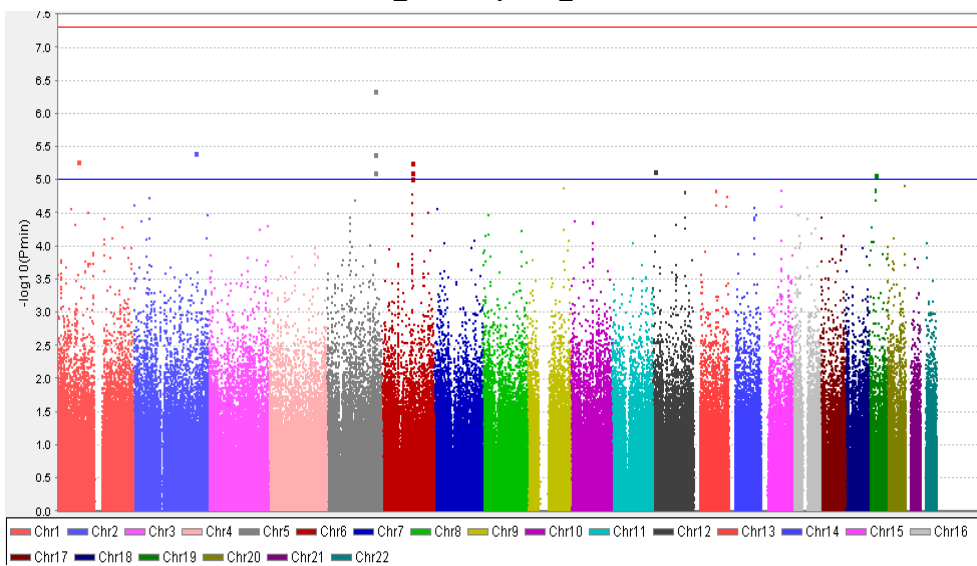
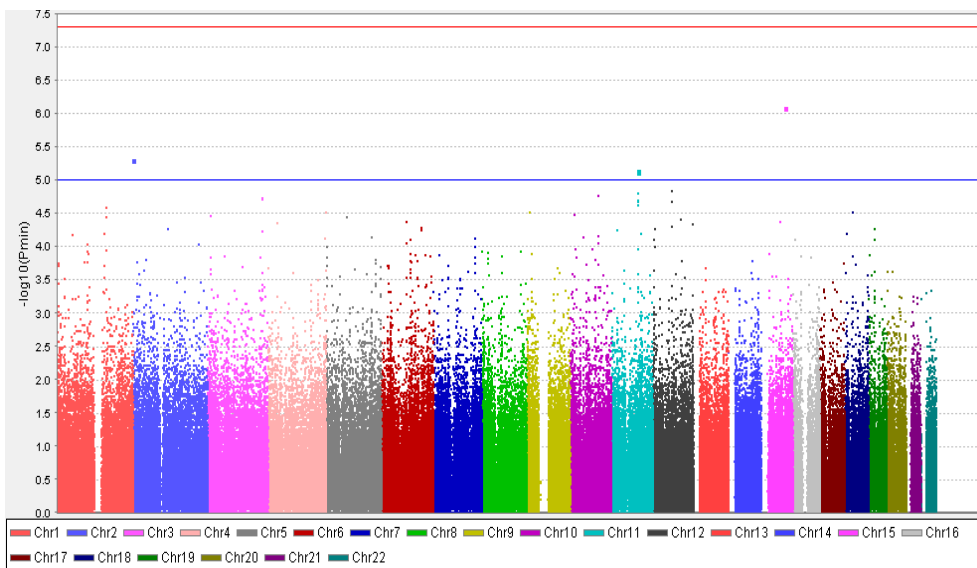


Fig. S2b: Manhattan plot for GWAS All types of platinum-agents, cisplatin and carboplatin induced severe neutropenia/leucopenia

All_Anthracycline_based



Adriacin



Epirubicin

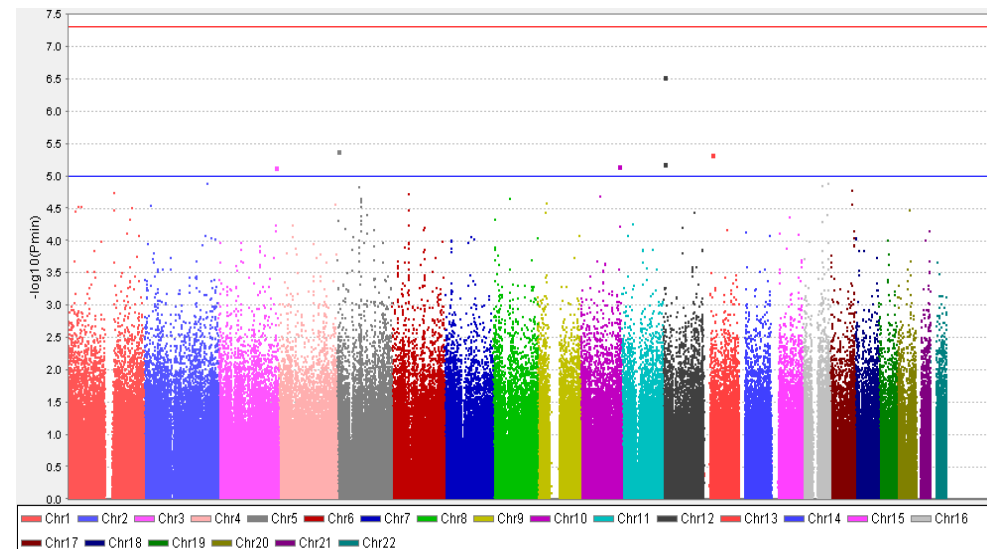
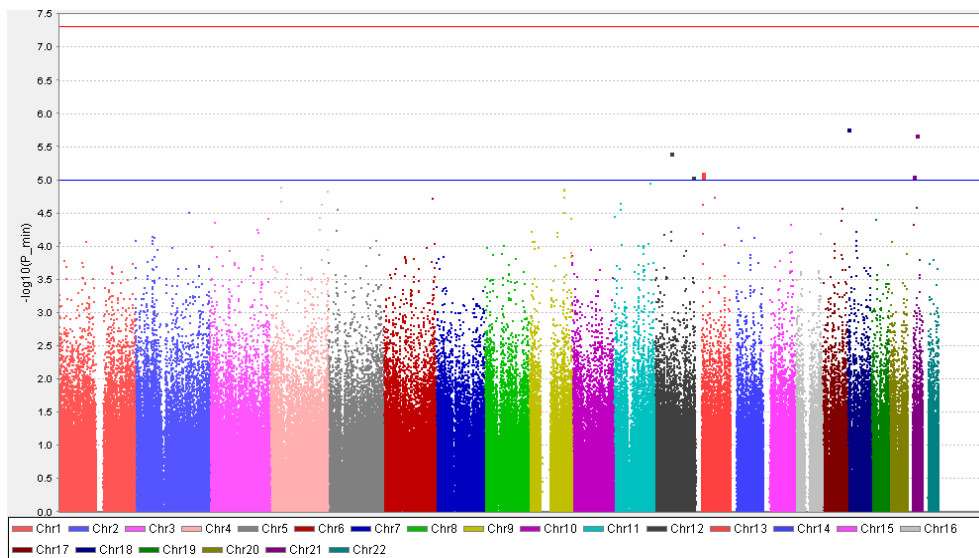
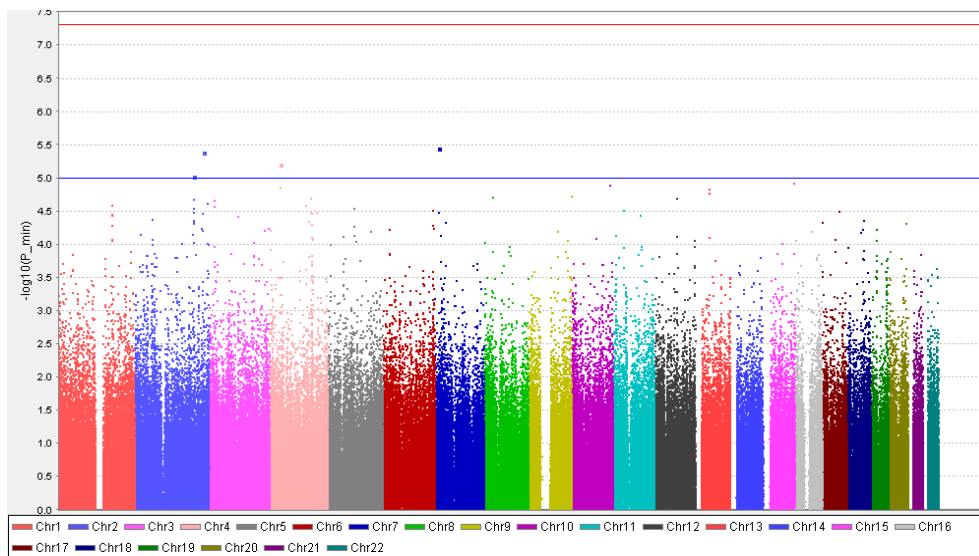


Fig. S2c: Manhattan plot for GWAS All types of anthracycline-based, Adriacin and Epirubicin induced severe neutropenia/leucopenia

All_anti-metabolites agents



5-FU



Gemcitabine

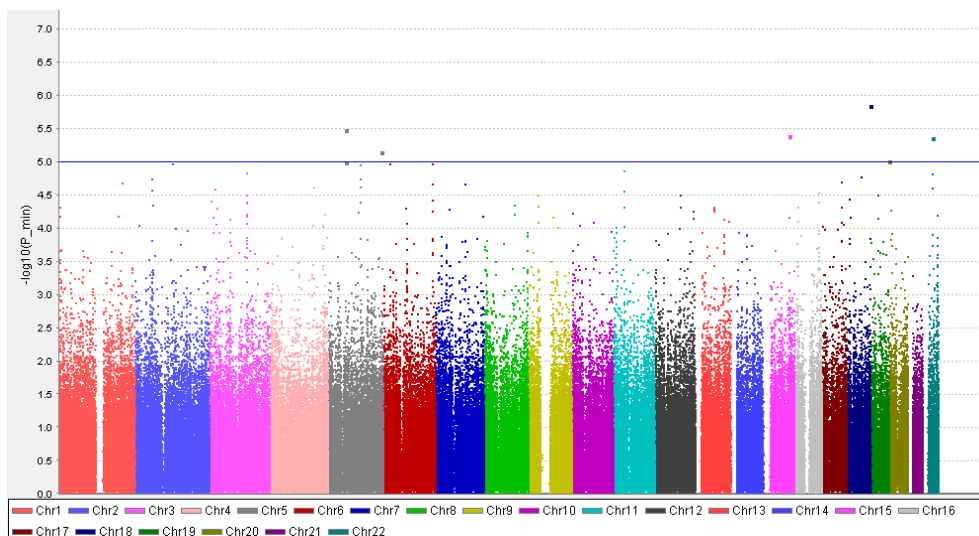
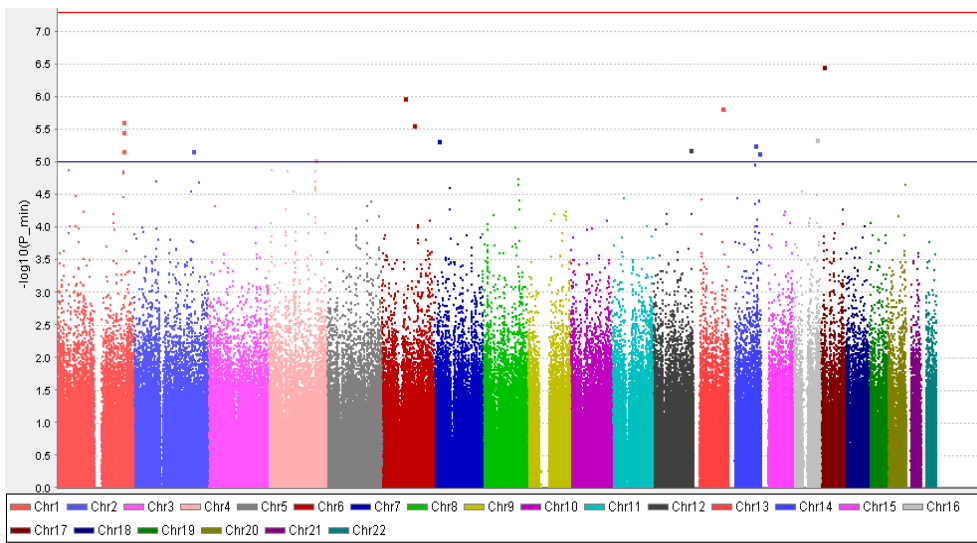
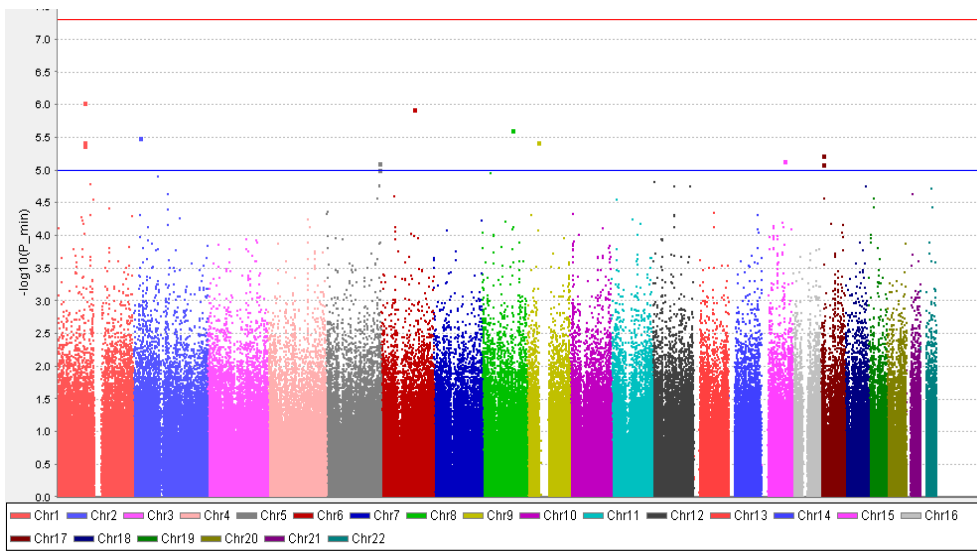


Fig. S2d: Manhattan plot for GWAS All types of anti-metabolites based, 5-FU and Gemcitabine induced severe neutropenia/leucopenia

All_anti-microtubules agents



Paclitaxel



Docetaxel

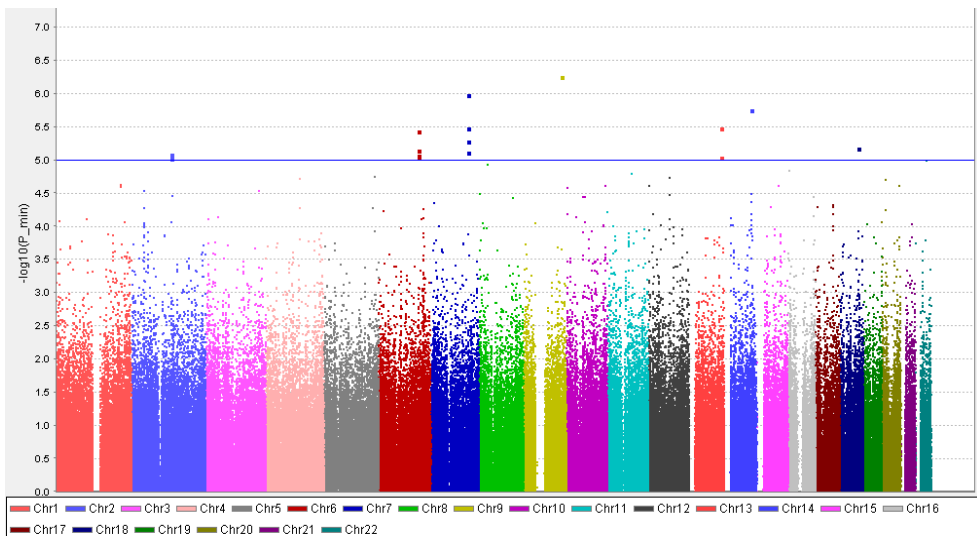
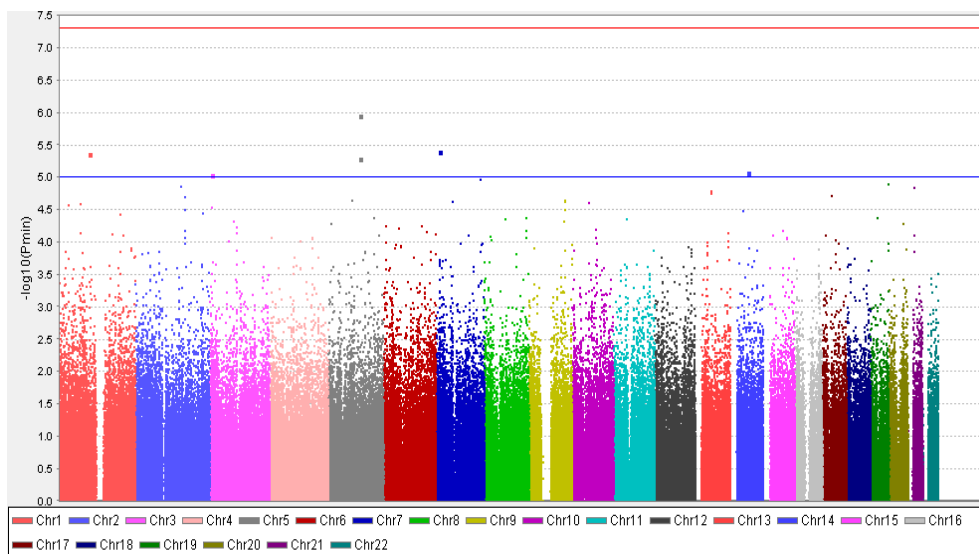
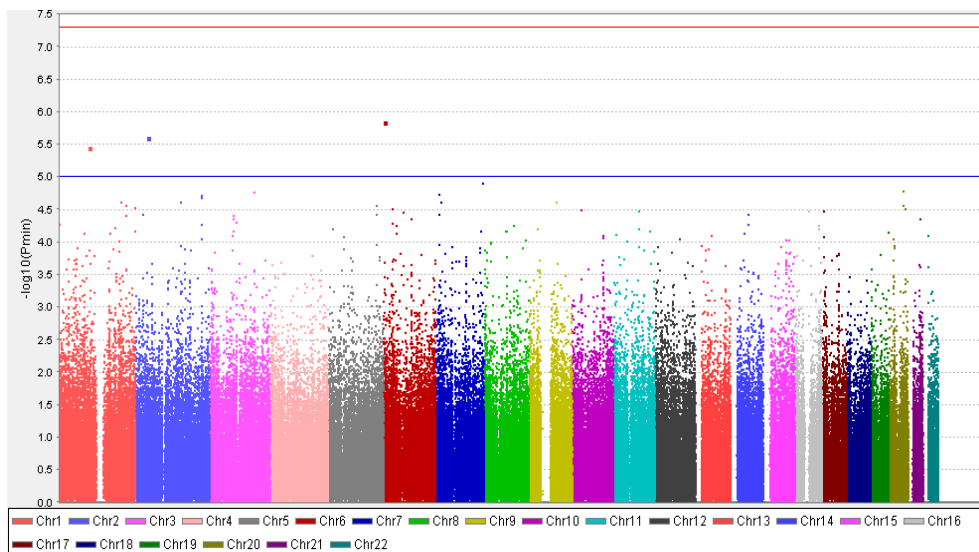


Fig. S2e: Manhattan plot for GWAS All types of anti-microtubules based, Paclitaxel and Docetaxel induced severe neutropenia

All_Topoisomerase_inhibitors



Camptothecin



Etoposide

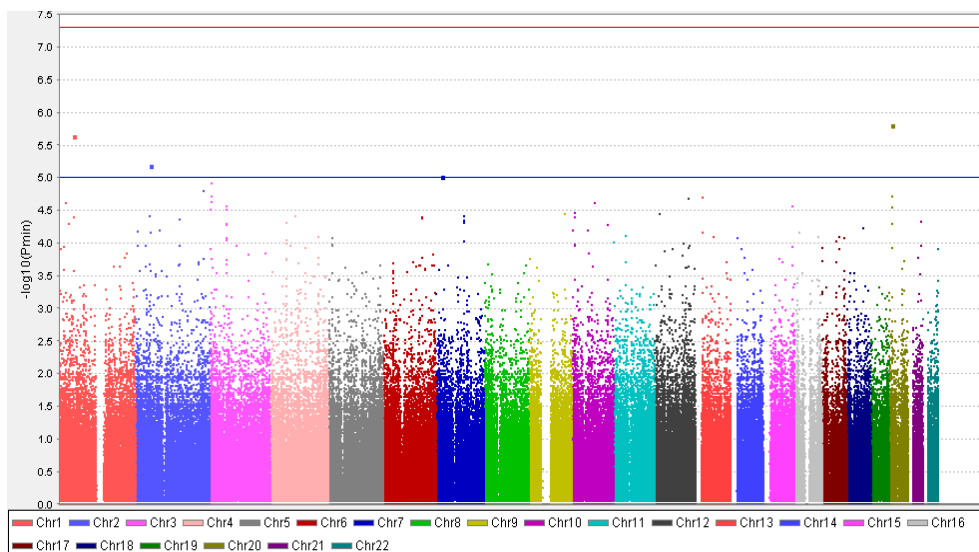


Fig. S2f: Manhattan plot for GWAS All types of topoisomerase inhibitors, Camptothecin and Etoposide induced severe neutropenia/leucopenia