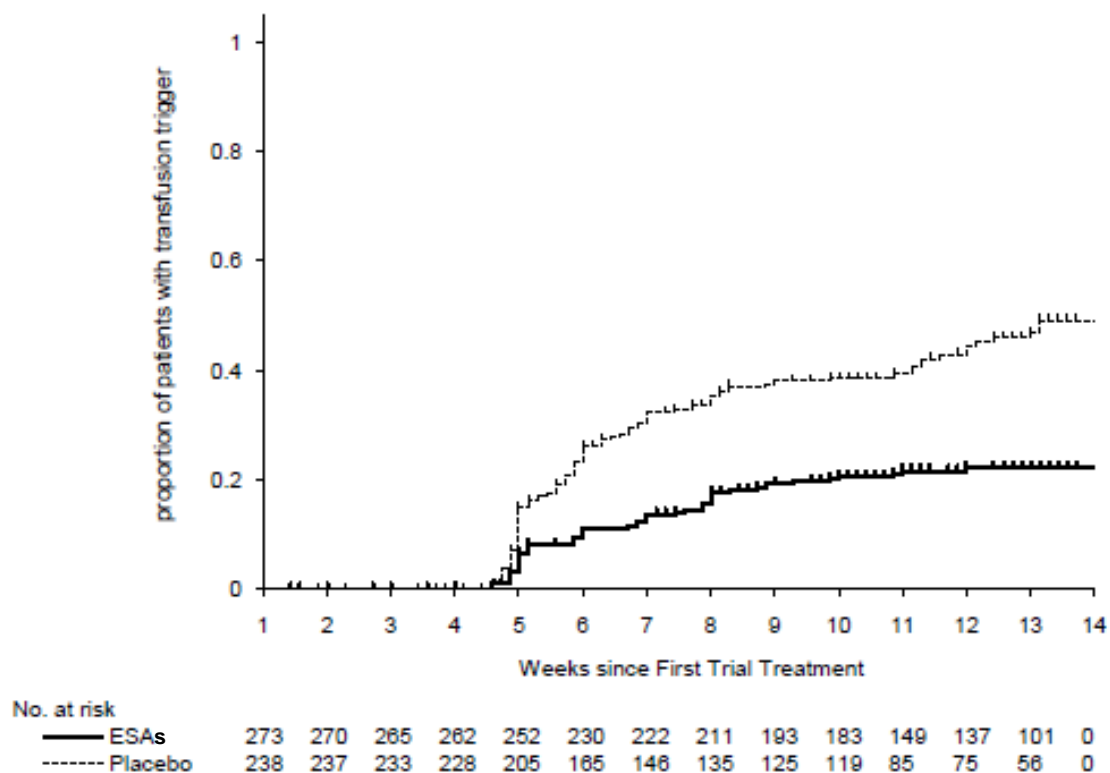


Figure S2 [Y Ohashi]



Patients reaching transfusion trigger (%) (95%CI) at week 14		
ESAs	Placebo	p-value
22 (17–27)	49 (41–57)	<0.001

Fig. S2. Kaplan-Meier curve of the time to transfusion trigger during the period from week 5 of treatment to the end of the treatment period for all patients treated with an ESA or placebo.

The percentage of patients who reached the transfusion trigger, defined as either receiving a red blood cell transfusion or having a hemoglobin concentration below 8 g/dL, from week 5 until week 14 was significantly lower in the ESA-treated group (22%) compared to the placebo-treated group (49%) ($p < 0.001$).