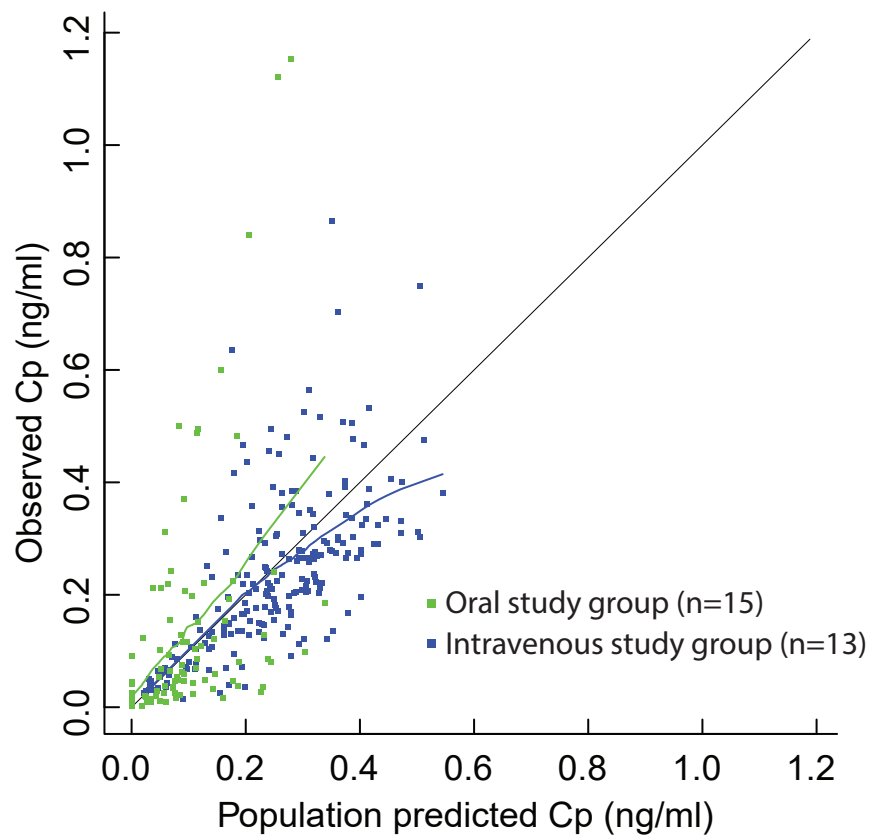
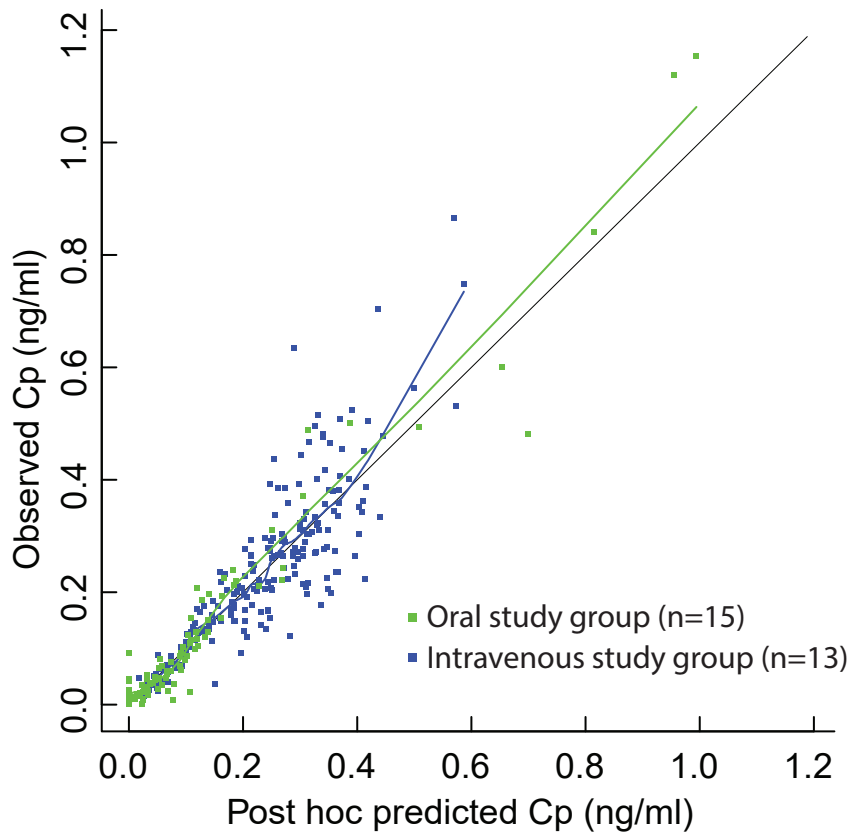


A.



B.



Goodness-of-fit plots. Population observed/predicted for (A) our oral dexmedetomidine study group data (n=10) and pooled intravenous dexmedetomidine study group (n=13). (B) Post hoc individual observed/predicted for (B) our oral dexmedetomidine study group data (n=10) and pooled intravenous dexmedetomidine study group (n=13). Each blue dot represents the data from pooled intravenous dexmedetomidine study group and green dot represents the data from our oral dexmedetomidine study group. The green line is a super smoother (loess) for oral study group and the blue line is a super smoother (loess) for intravenous study group. Black line shows the perfect fit.