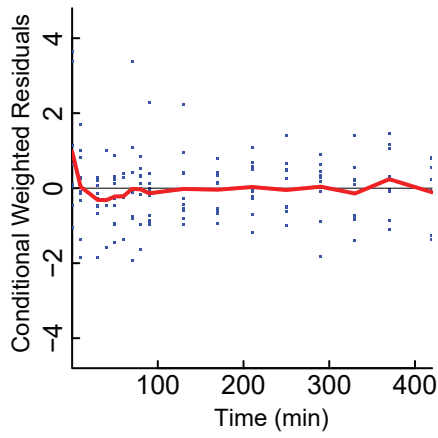
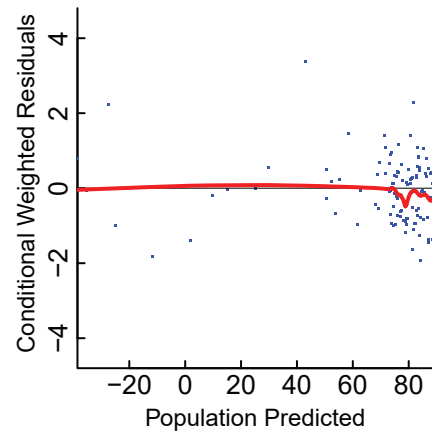


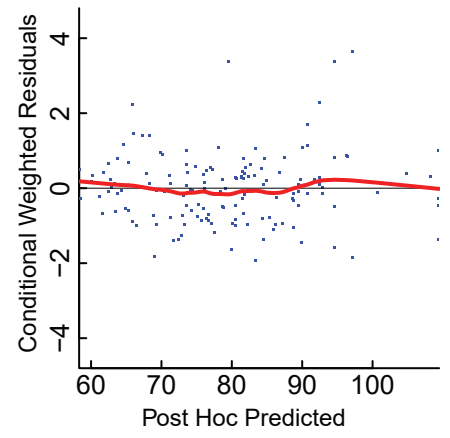
A.



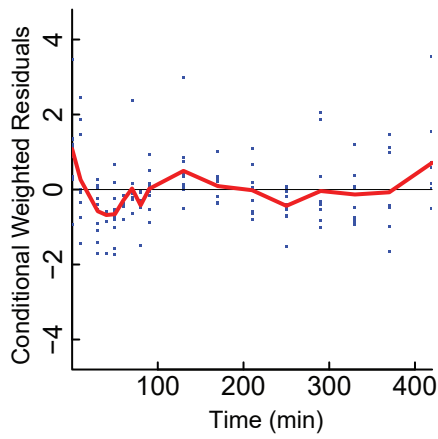
C.



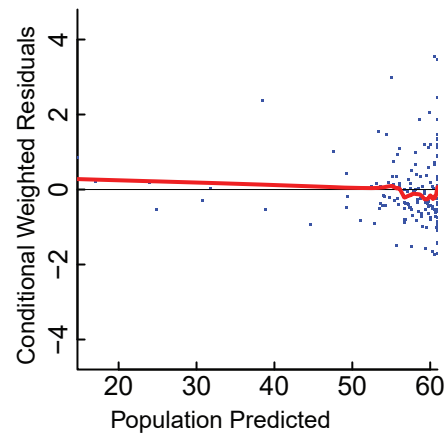
E.



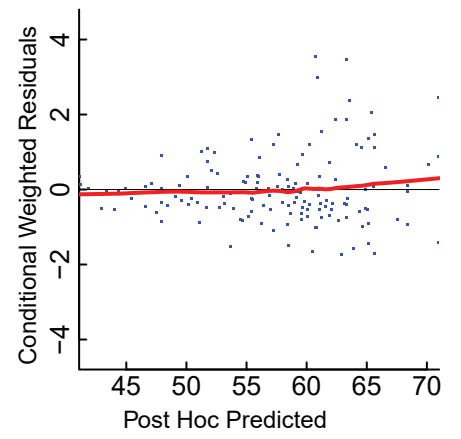
B.



D.



F.



Conditional Weighted Residual (CWRES) goodness-of-fit plots for our oral dexmedetomidine study group (n=10). Conditional Weighted Residual versus (A) time, (C) population prediction, and (E) post hoc individual prediction for mean arterial pressure. Conditional Weighted Residual versus (B) time, (D) population prediction, and (F) post hoc individual prediction for heart rate. Blue points represent the CWRES distribution. The red line is a super smoother (loess) for all patients. The horizontal black line at $y=0$ represents a perfect fit. In the plots, the CWRES are homogeneously distributed above and below the horizontal line at $y=0$.