

A test of the lateral semicircular canal correlation to head posture, diet and other biological traits in “ungulate” mammals.

Benoit J. ^{1*}, Legendre L.J. ², Farke A.A. ³, Neenan J.M. ⁴, Mennecart B. ⁵, Costeur L. ⁵, Merigeaud S. ⁶, Manger P.R. ⁷

¹Evolutionary Studies Institute (ESI), School of Geosciences, University of the Witwatersrand, Braamfontein, 2050, Johannesburg, South Africa

²Jackson School of Geosciences, The University of Texas at Austin, 2275 Speedway Stop C9000, Austin, TX, United States

³Raymond M. Alf Museum of Paleontology at The Webb Schools, 1175 West Baseline Road, Claremont, California, USA

⁴Oxford University Museum of Natural History, Parks Road, Oxford, OX1 3PW, UK.

⁵Naturhistorisches Museum Basel, Augustinergasse 2, 4001 Basel, Switzerland.

⁶Radiologist Groupe CRP, Clinique du Parc, Castelnau le Lez, France

Tridilogy, Saint Gely du Fesc, France

⁷School of Anatomical Sciences, University of the Witwatersrand, 7 York Road, Parktown, 2193, Johannesburg, South Africa.

*Corresponding author: julien.benoit@wits.ac.za.

Supplementary Figures

Figure S1. Ancestral character state reconstruction of the neutral head posture in ungulates using maximum likelihood (fastAnc) in phytools (Revell, 2013). Phylogenetic tree after Bininda-Emonds et al.⁵⁶

Figure S2. Ancestral character state reconstruction of of the reconstructed head posture in ungulates using maximum likelihood (fastAnc) in phytools (Revell, 2013). Phylogenetic tree after Bininda-Emonds et al.⁵⁶

Figure S3. Ancestral character state reconstruction of body mass variations in ungulates using MCMC stochastic character mapping (make.simmap) in phytools (Revell, 2013). a, continuous data; b, character discretized into a binary data (<100 kg/>100 kg). Phylogenetic tree after Bininda-Emonds et al.⁵⁶

Figure S4. Ancestral character state reconstruction of diet variations in ungulates using MCMC stochastic character mapping (make.simmap) in phytools (Revell, 2013). Phylogenetic tree after Bininda-Emonds et al.⁵⁶

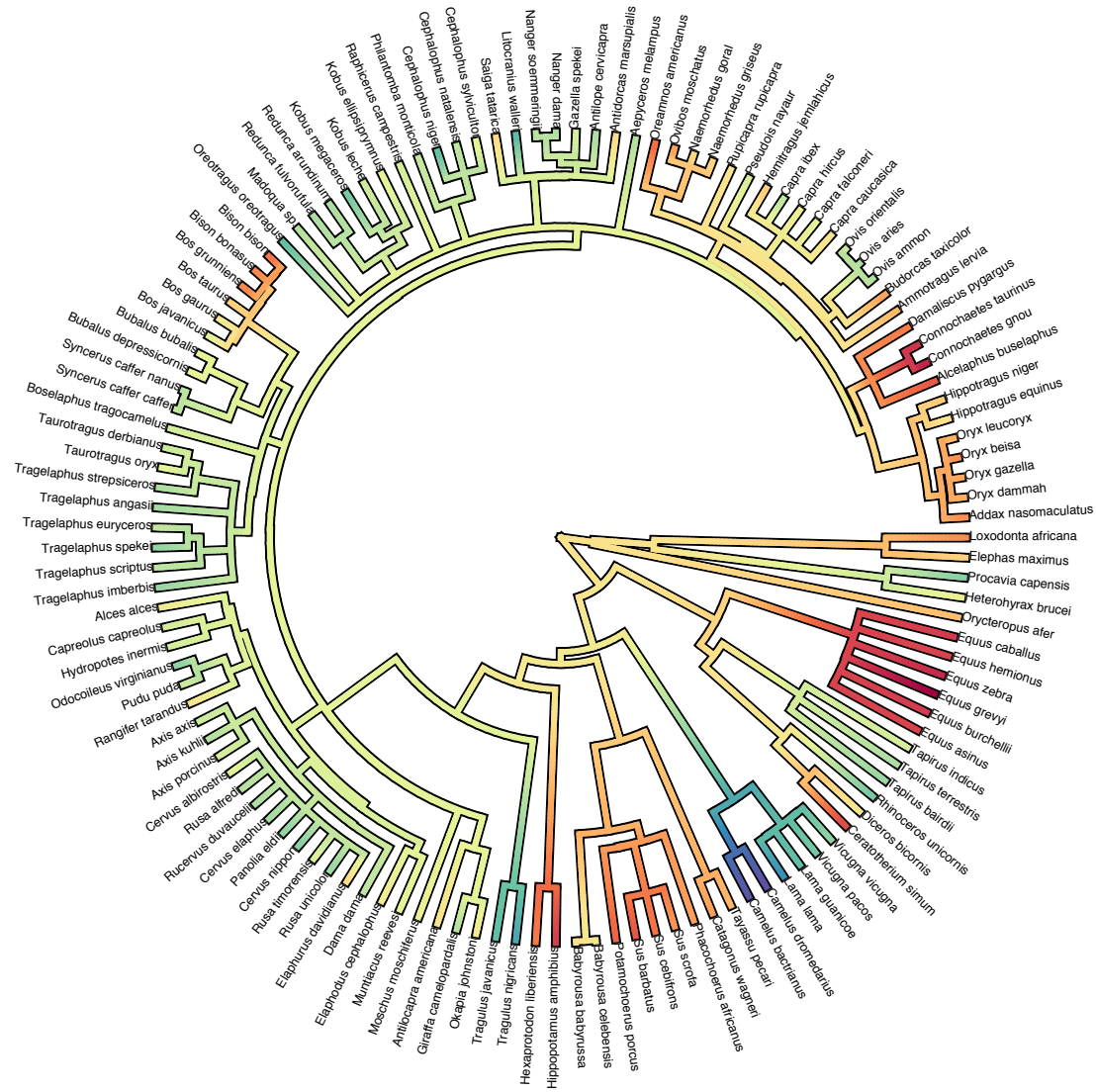
Figure S5. Ancestral character state reconstruction of the habitats variations in ungulates using MCMC stochastic character mapping (make.simmap) in phytools (Revell, 2013). Phylogenetic tree after Bininda-Emonds et al.⁵⁶

Figure S6. Ancestral character state reconstruction of head butting behaviour in ungulates using MCMC stochastic character mapping (make.simmap) in phytools (Revell, 2013). Phylogenetic tree after Bininda-Emonds et al.⁵⁶

Reference list:

Revell, L.J., 2013. Two new graphical methods for mapping trait evolution on phylogenies. *Methods Ecol Evol* 4, 754–759. <https://doi.org/10.1111/2041-210X.12066>

Fig. S1



Neutral head posture

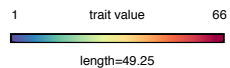
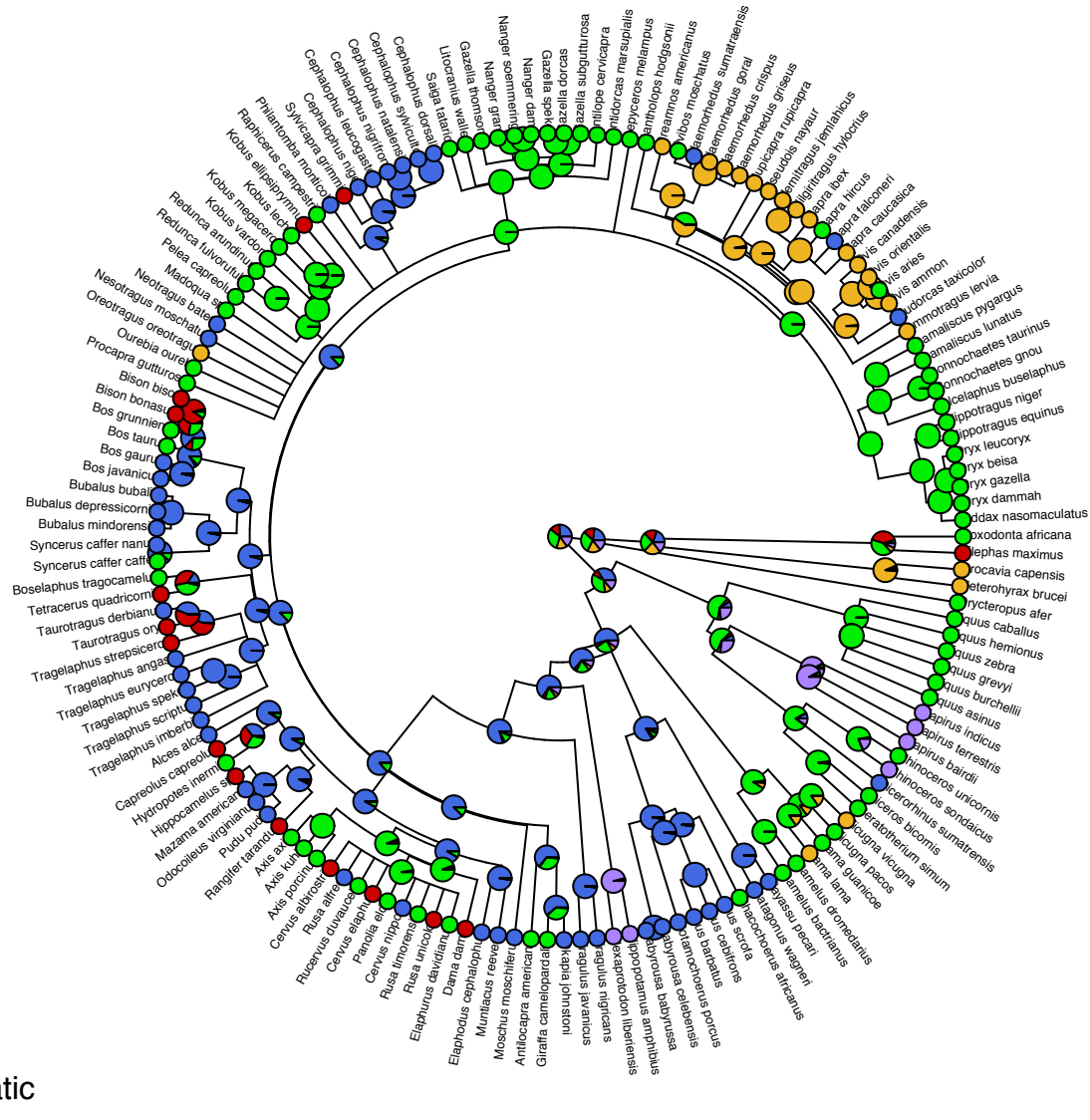


Fig. S5



Habitat



closed

mixed

open

rocky

semi-aquatic

