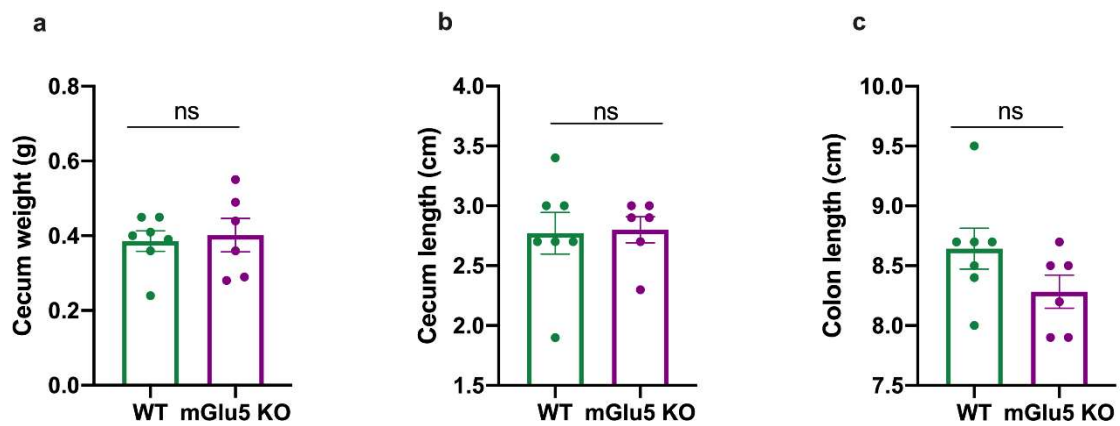


Supplementary Figure 2

Microbiome profiling reveals gut dysbiosis in the metabotropic glutamate receptor 5 knockout mouse model of schizophrenia

Gubert et al.



Suppl. Fig. 2. Gastrointestinal parameters of mGlu5 KO mice. Macroscopic evaluation of intestine. (a) Cecum weight, (b) cecum length and (c) colon length without normalization by body weight; unpaired t-test. The plots show mean \pm SEM (n = 6-7 for both WT and mGlu5 KO mice groups). ns $p > 0.05$.