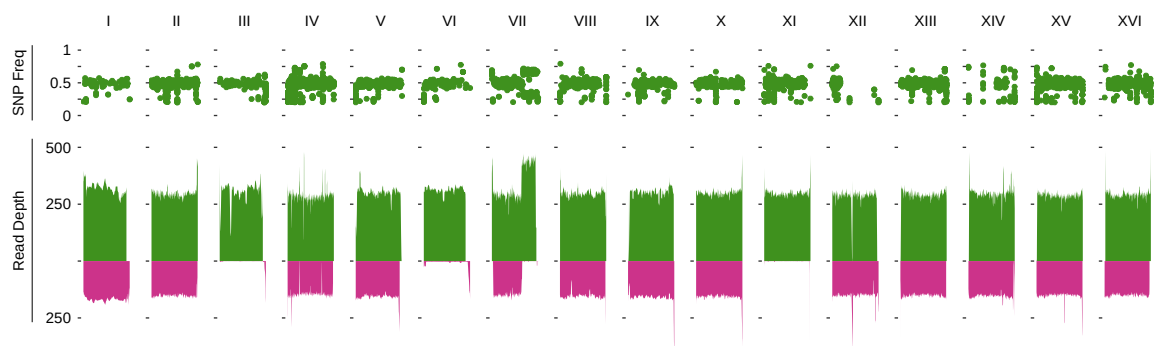


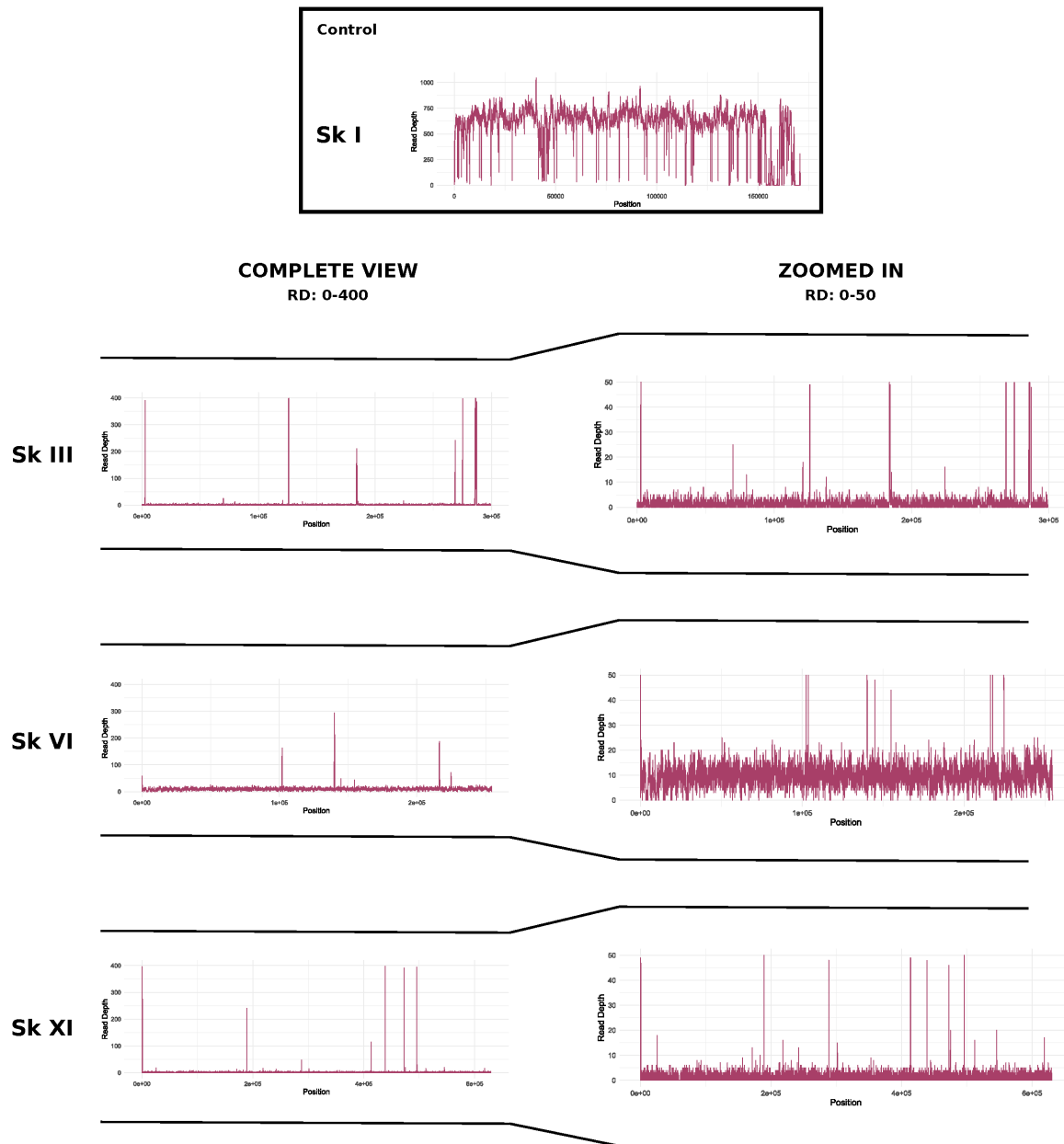
## Supplemental material

### Genomic instability in an interspecific hybrid of the *Saccharomyces* genus: a matter of adaptability.

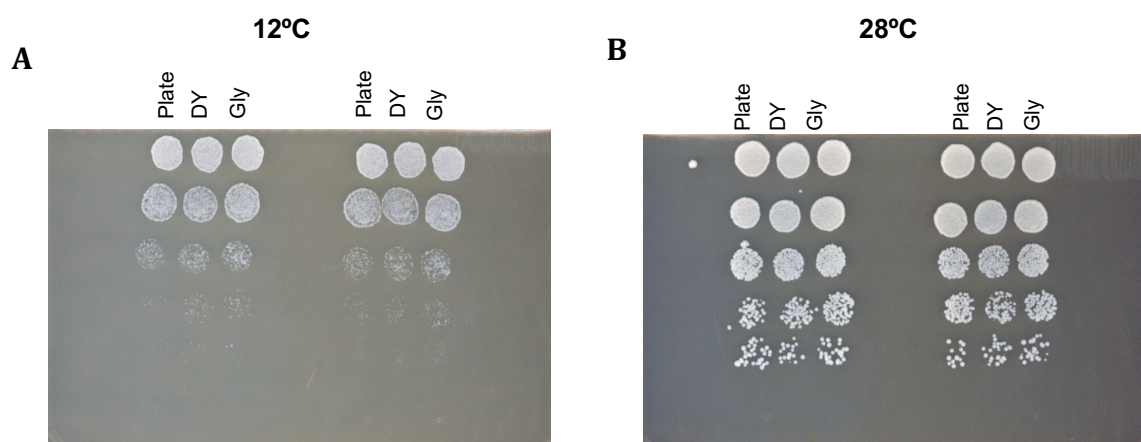
Miguel Morard<sup>1,2</sup>, Clara Ibáñez<sup>2</sup>, Ana C. Adam<sup>2</sup>, Amparo Querol<sup>2</sup>, Eladio Barrio<sup>1,2</sup>, Christina Toft<sup>1,2,4\*</sup>



**Figure S1.** Genome Structure of the strain VIN7. The Read Depth is calculated as the mean of 10kb window moving by 1kb steps. Only heterozygous SNPs in the *Sc* sub-genome are plotted.



**Figure S2.** Detecting the low frequency chromosome III,VI and XI of Sk. The Read Depth is plotted for all nucleotide positions in the four chromosomes. Chromosome Sk I was used as the control for the expected coverage of a Sk chromosome. Sk I has a scale of 0-1000 read depth (RD), where the left panel of Sk III, VI and XI is shows a comparative scale to Sk I with 0-400 RD. The right panel is a zoomed on the three chromosomes with a 0-50 RD.



**Figure S3.** Effect of the temperature on yeast growth phenotypes. After cultivation in GPY liquid medium at 28°C, VIN7 from dry yeast (DY), glycerinated (Gly) and Plate (Plate) were spotted on solid GPY medium at different dilutions and incubated at 12°C (A) and 28°C (B) for 2 days. The experiments were performed in duplicate.