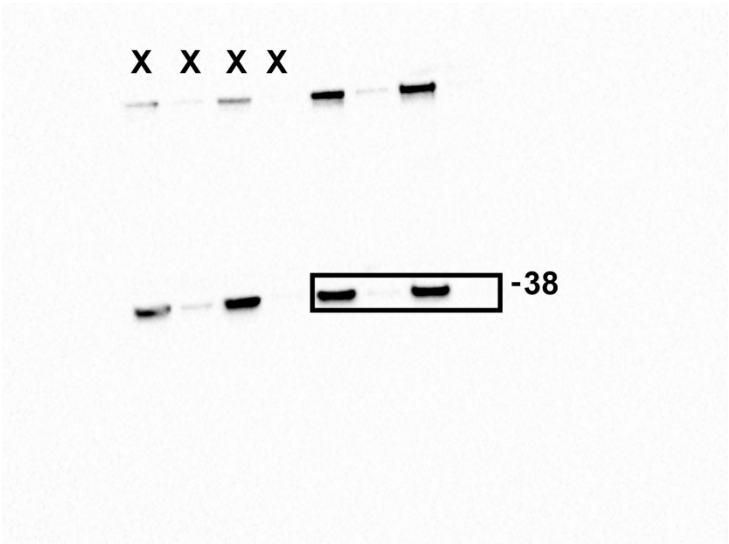


Fig. 2C:

NPM1:



Actin:

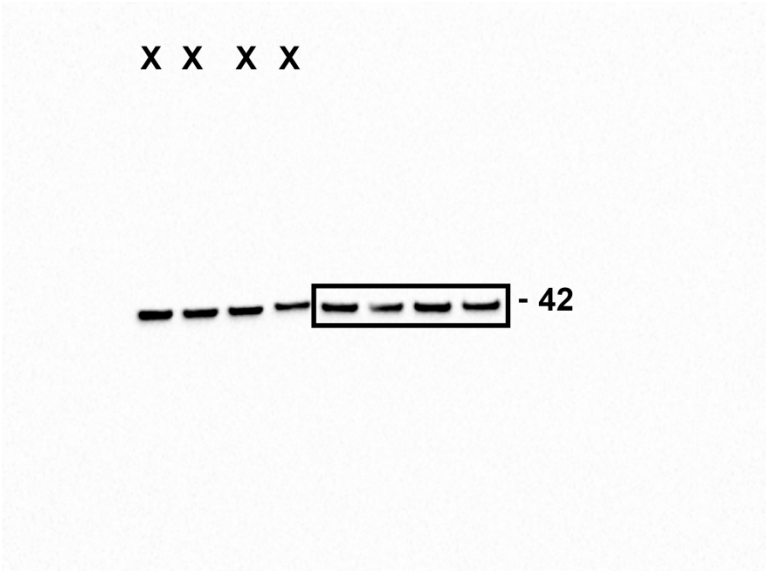
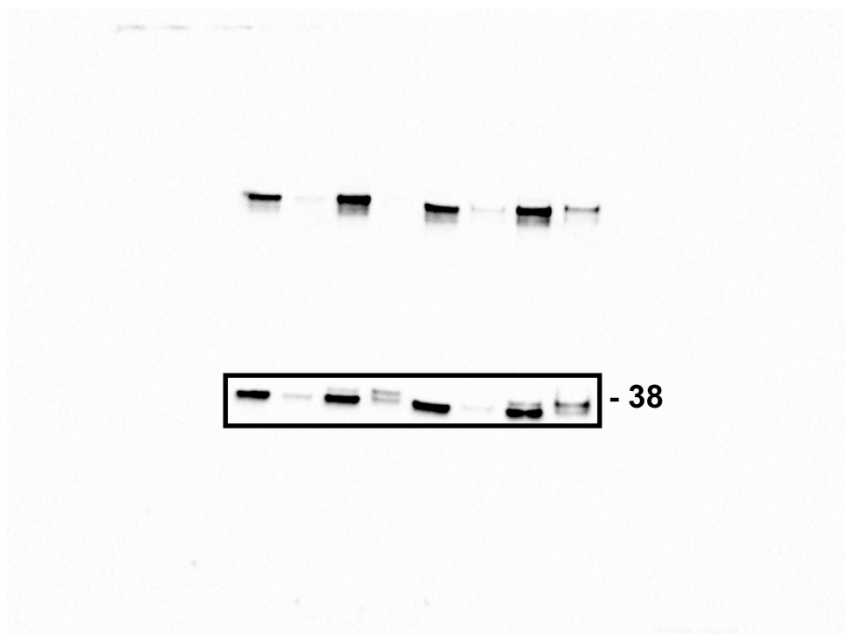


Fig 2F:

NPM1:



Actin:

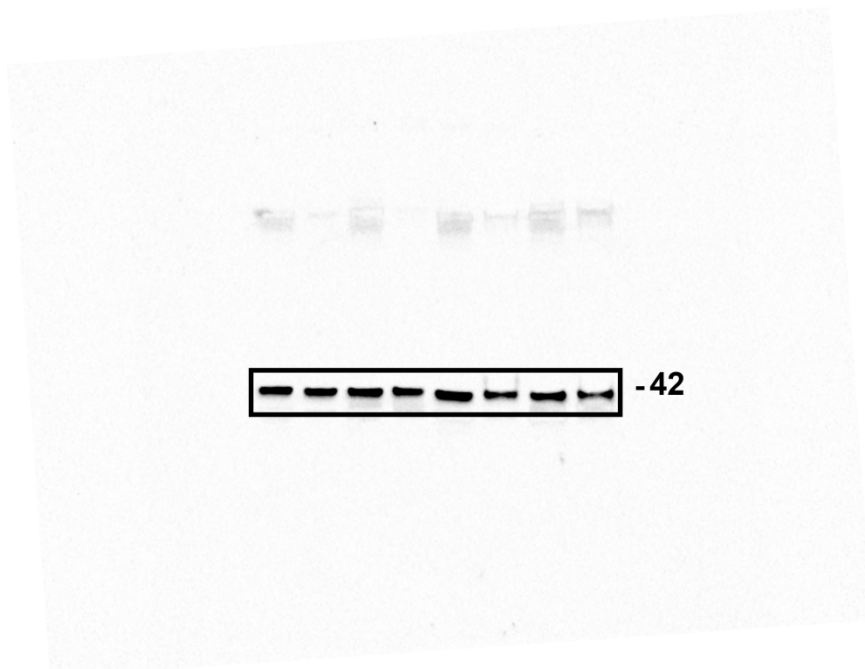
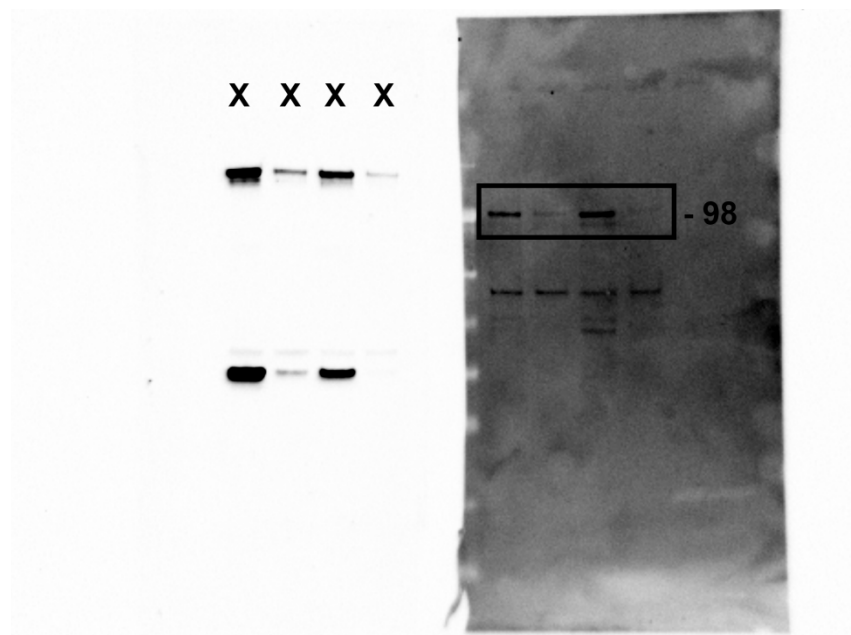


Fig 2H:

IPO7:



Actin:

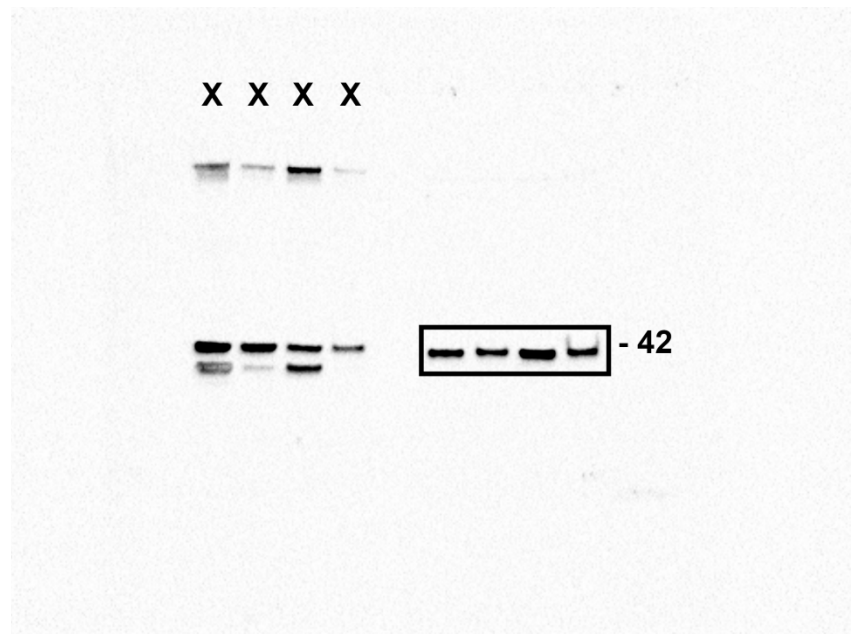
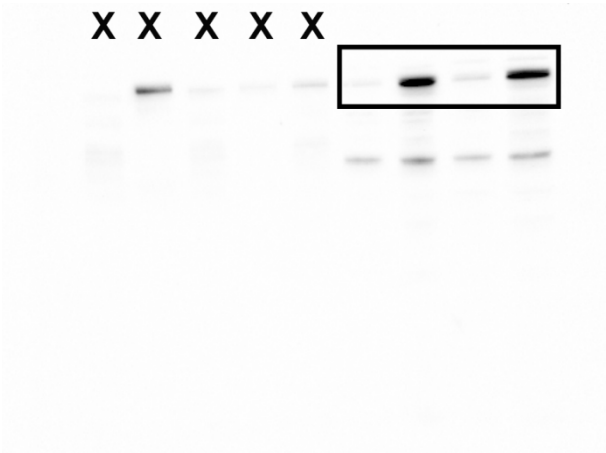


Fig. 2J:

RBM10:



Tubulin:

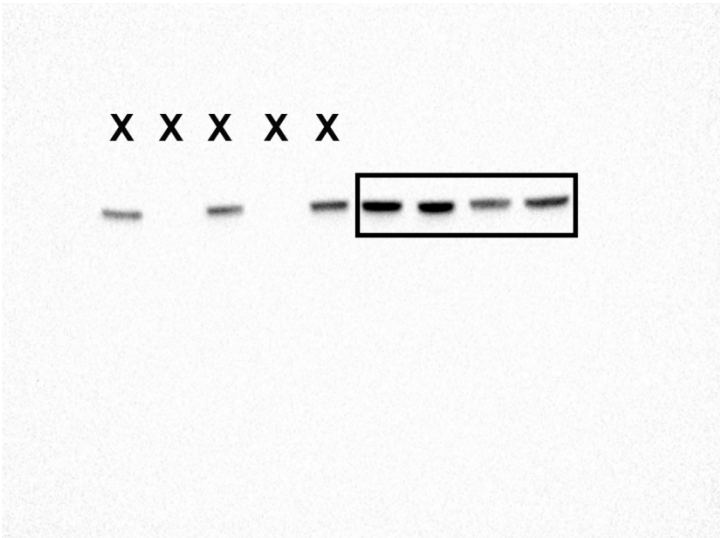
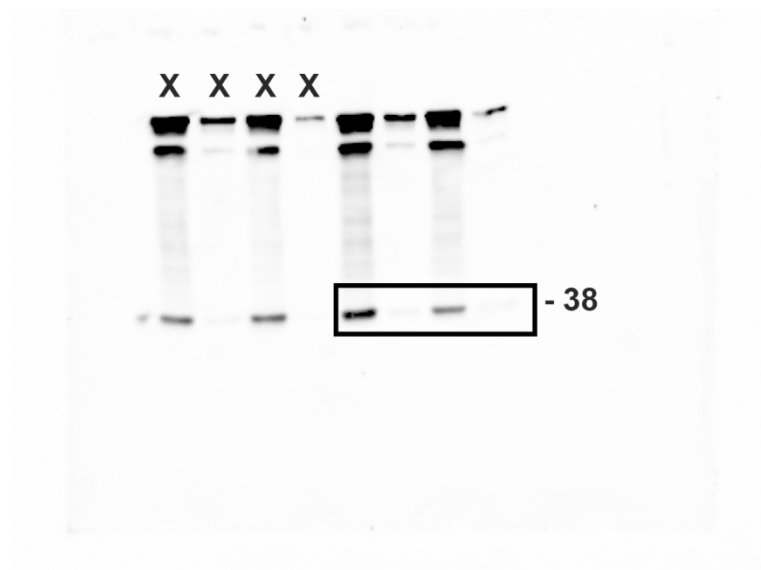
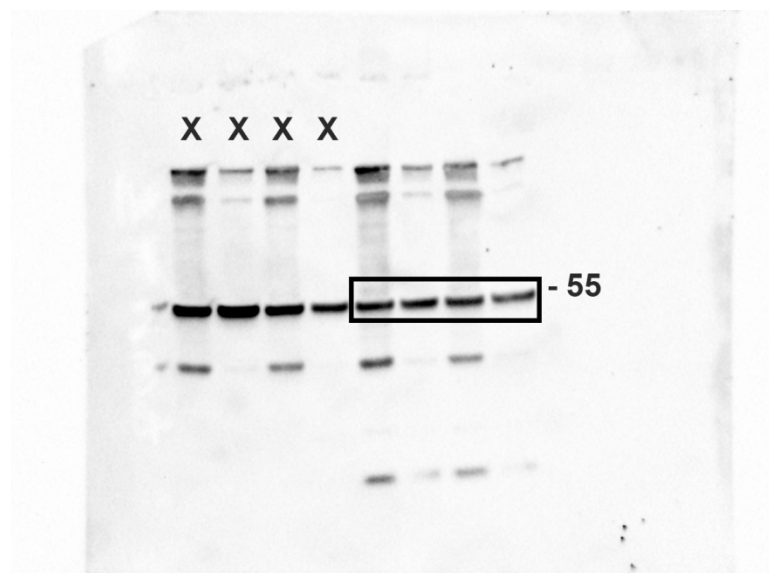


Fig 3A:

NPM1:



Tubulin:



p53:

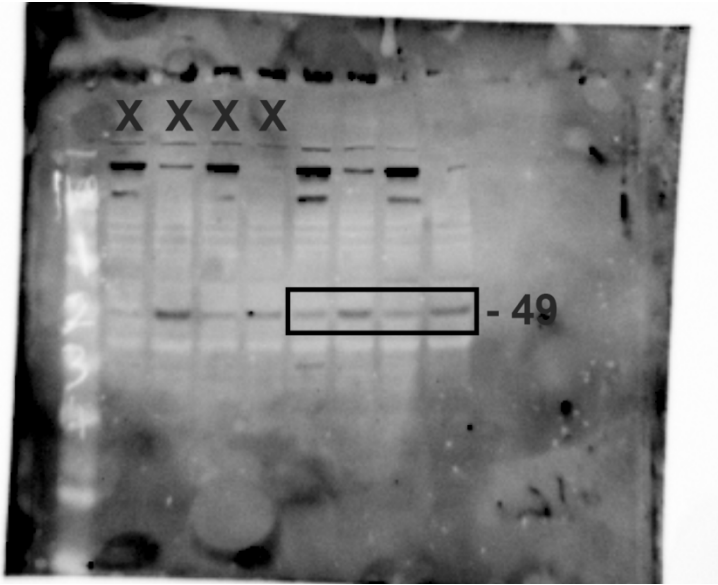
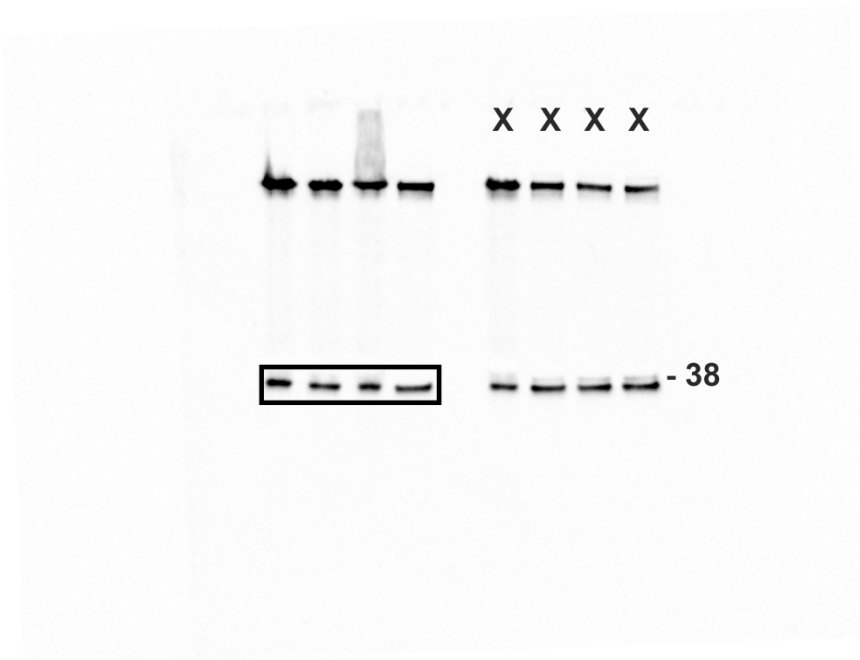
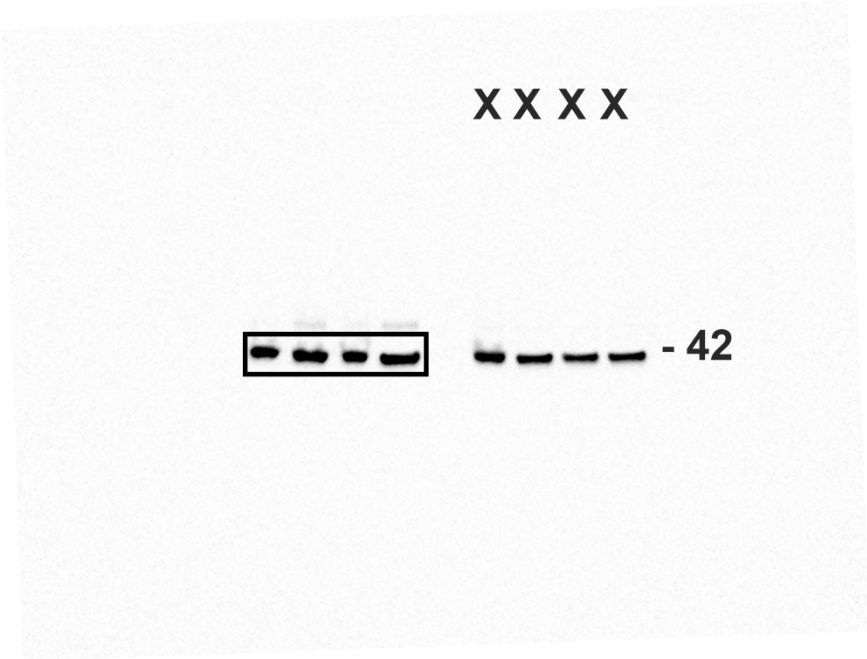


Fig. 3D:

NPM1:



Actin:



p53:

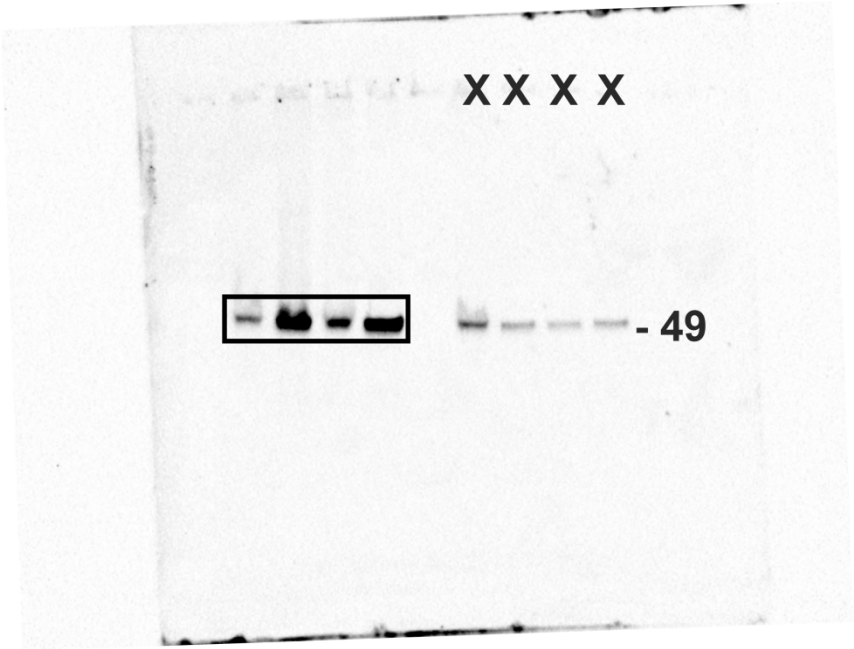
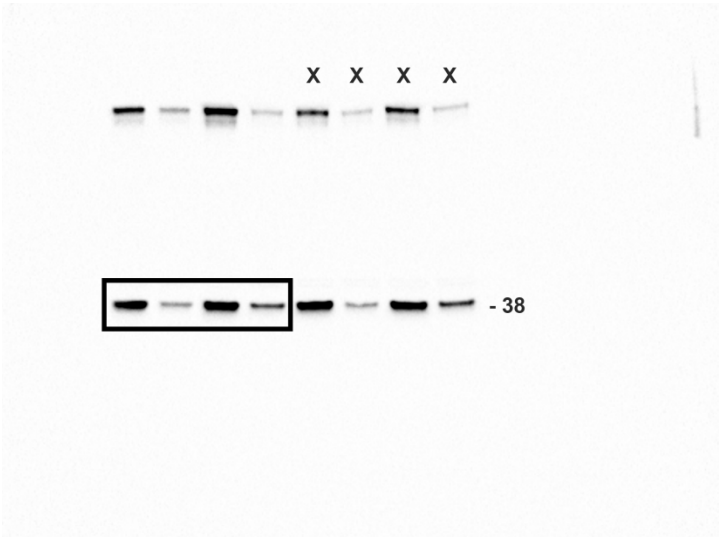
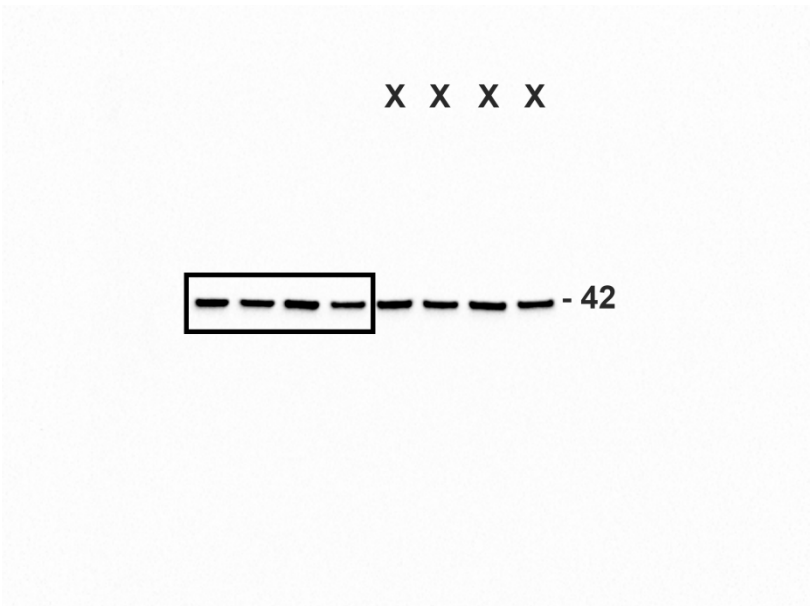


Fig. 4E:

NPM1:



Actin:



Cyclin A2:



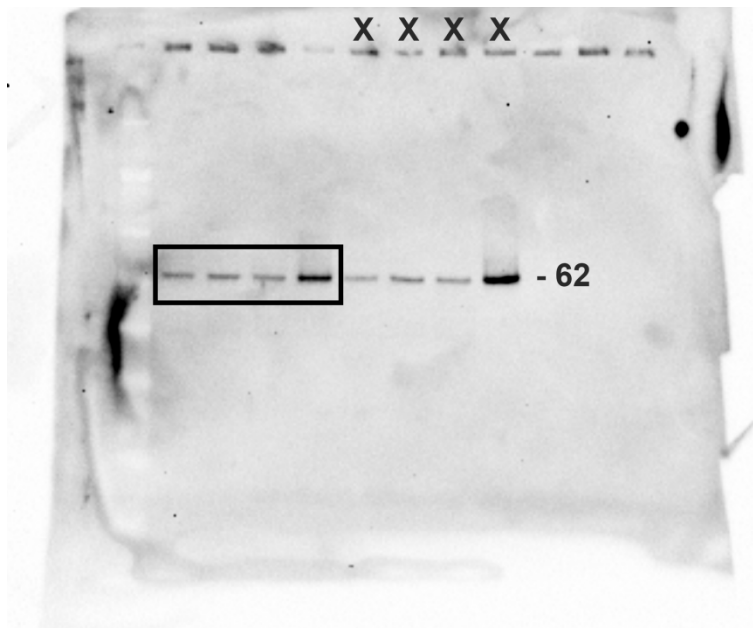
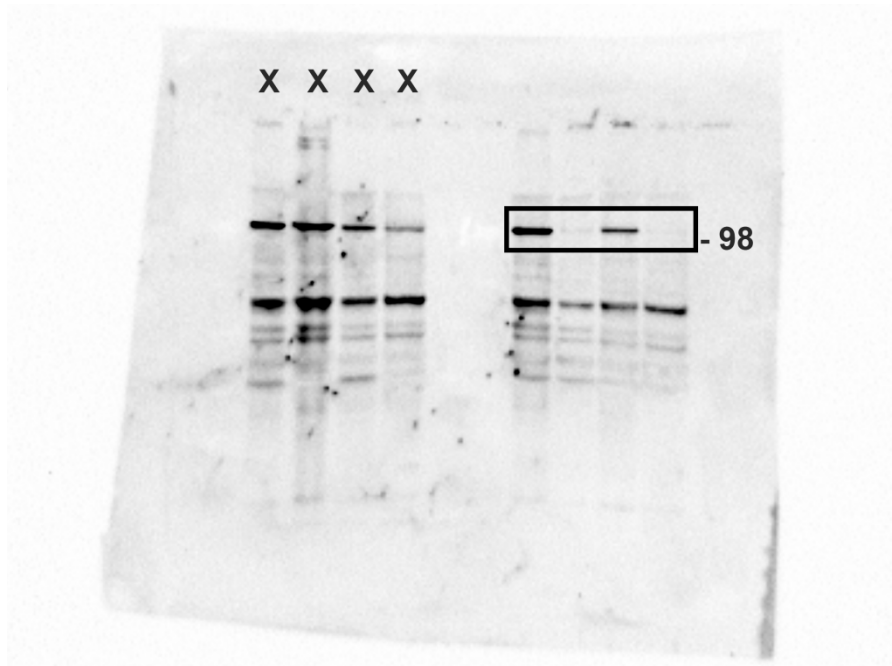
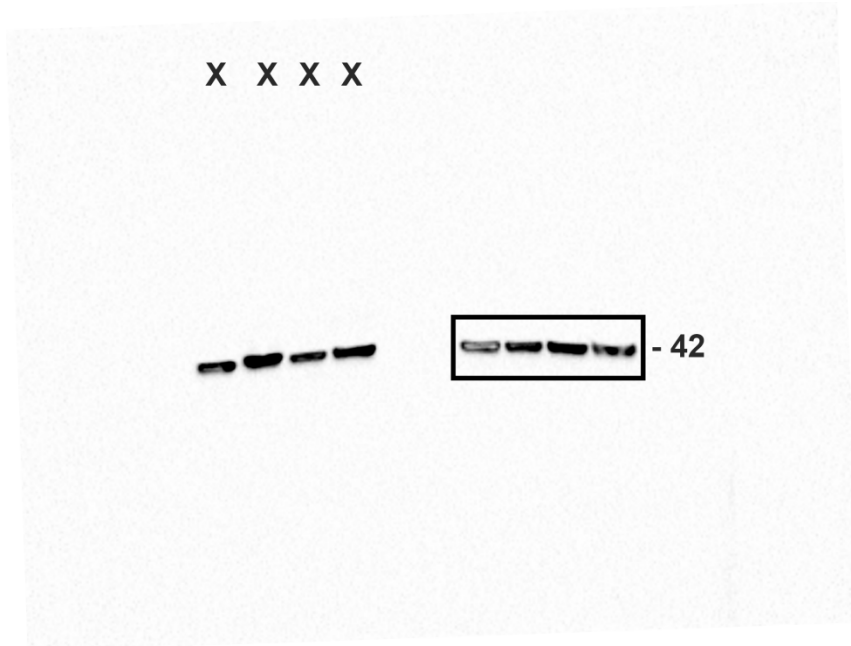


Fig. 4F:

IPO7:



Actin:



Cyclin A2:

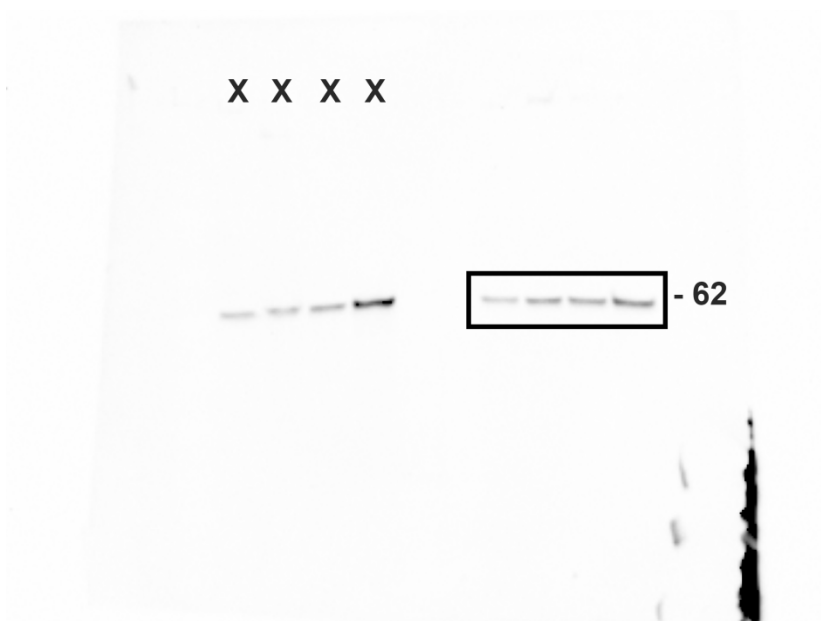
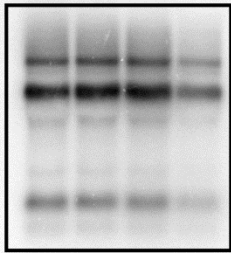
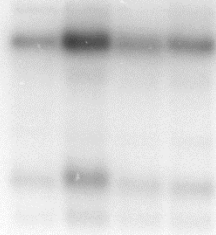


Fig. 5B:

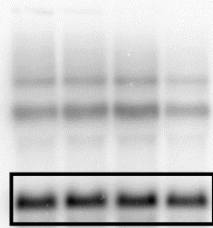
ITS2:



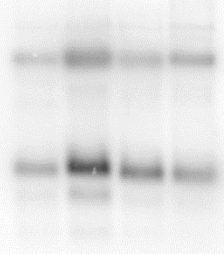
X X X X



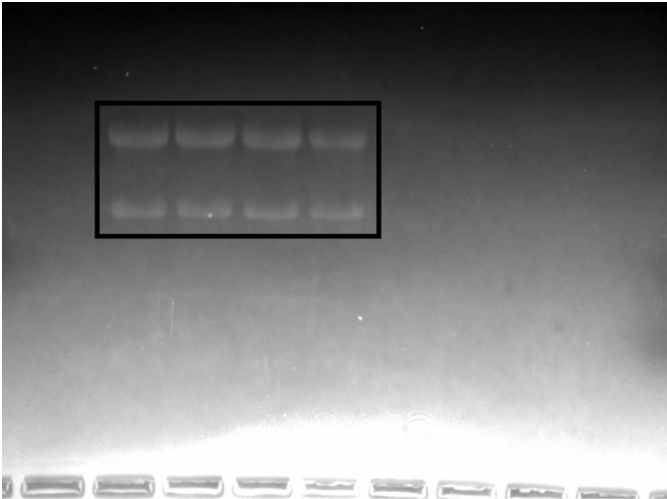
GAPDH:



X X X X



Ethidium Bromide (zoom-in high exposure uncropped image of only top half of gel):



Ethidium bromide (zoom-out low exposure uncropped image of whole gel):

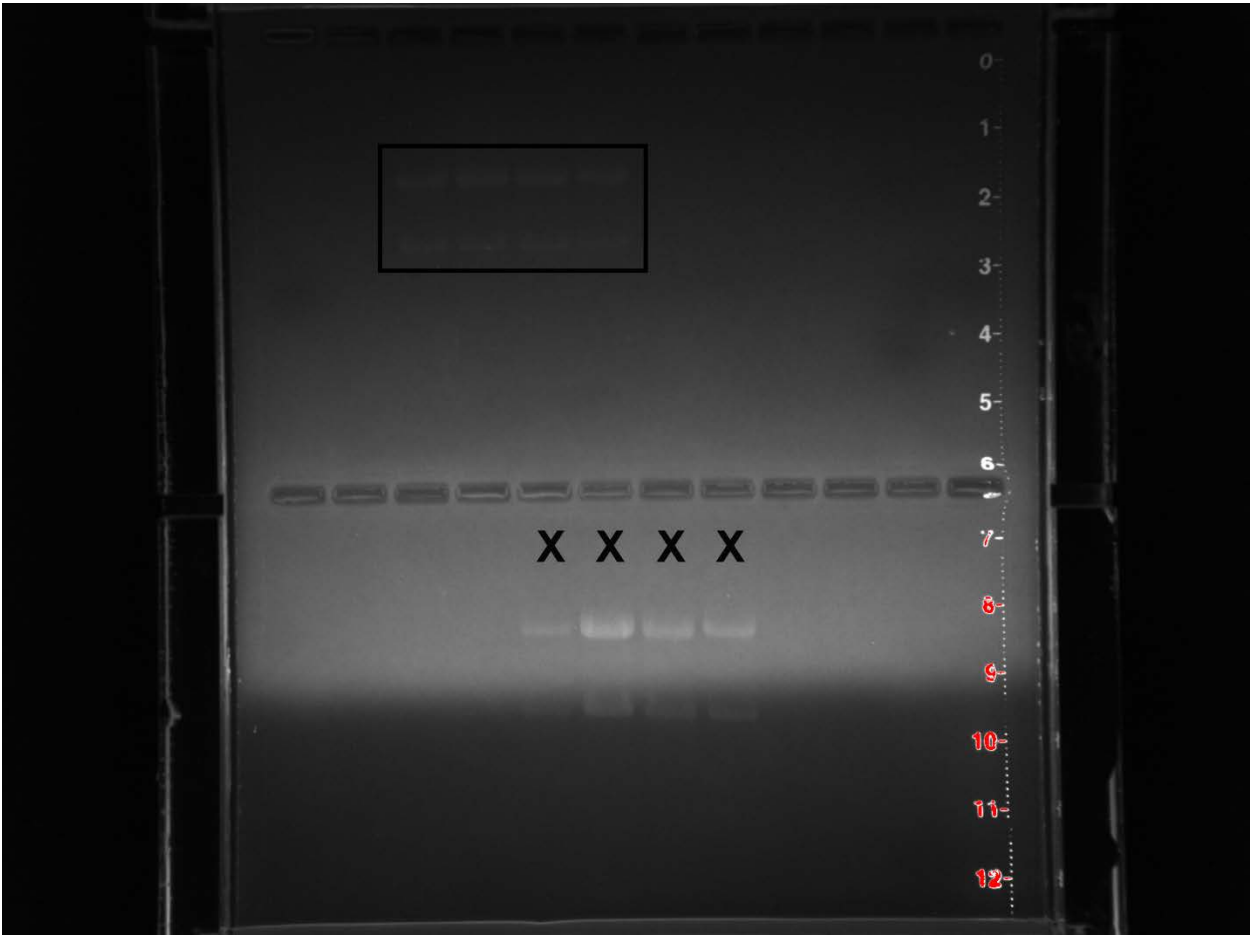
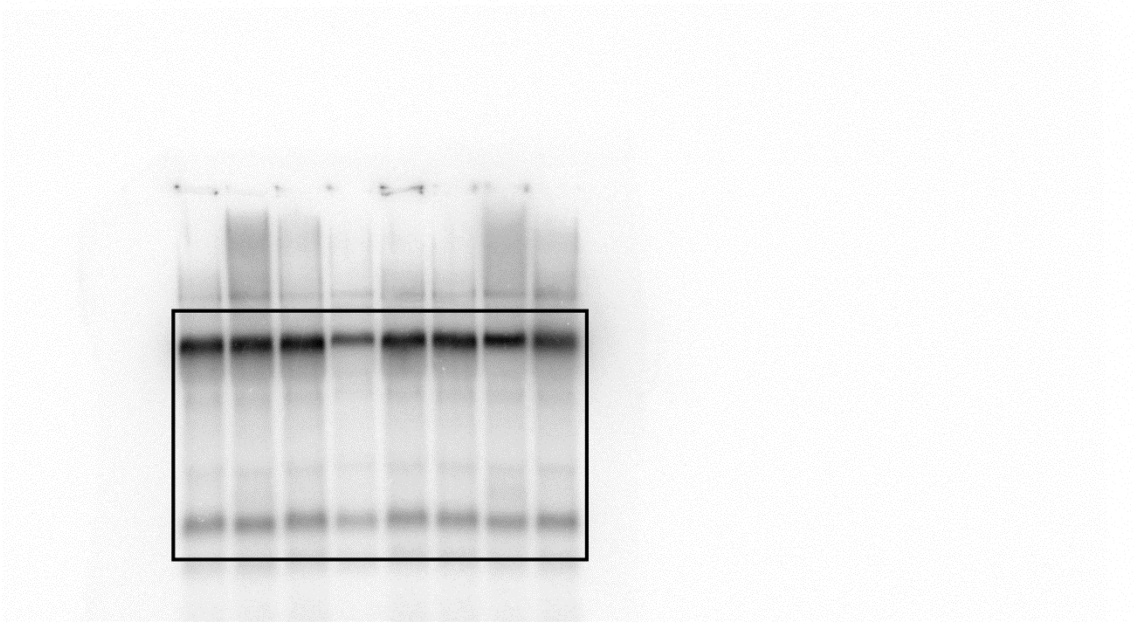


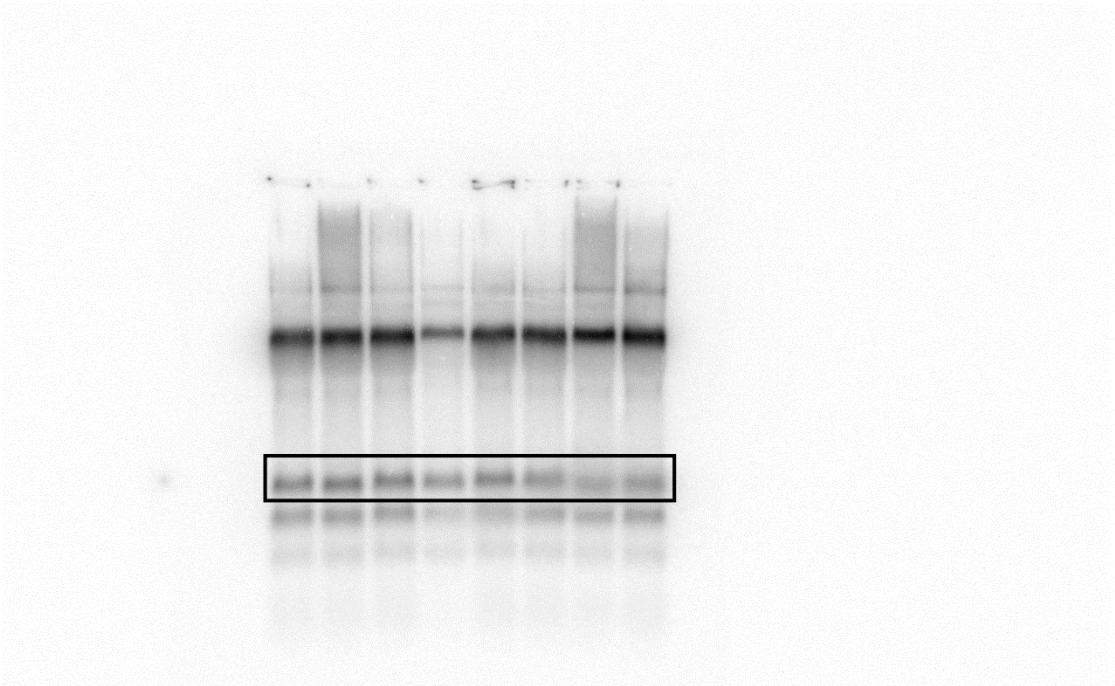
Fig. 5C:

ITS2:





GAPDH:



Ethidium Bromide:

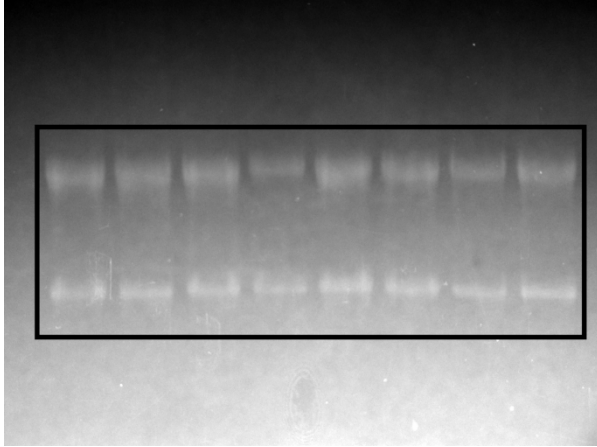
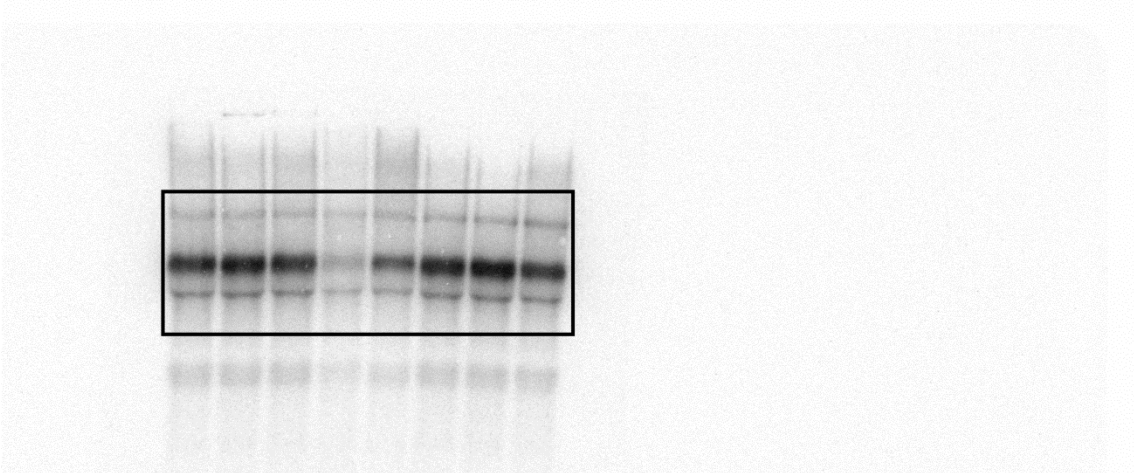
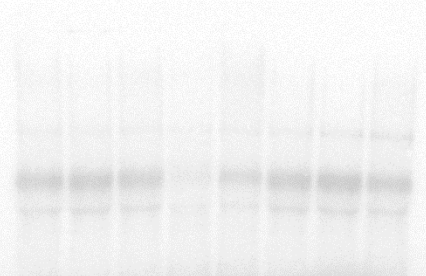


Fig. 5D:

5'-ETS:

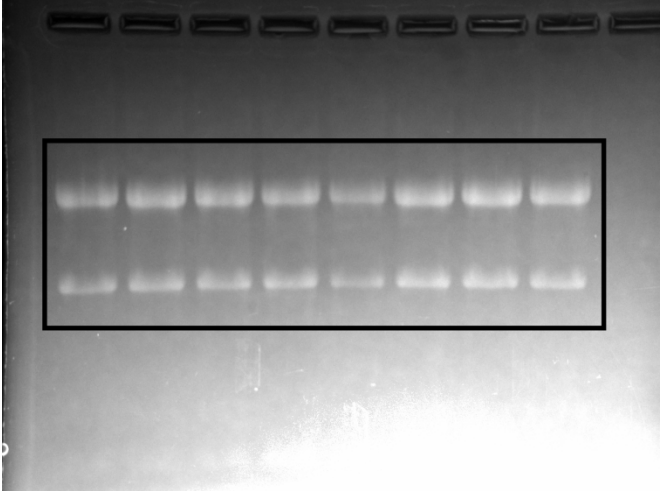


GAPDH:



Blank Blank Blank Blank Blank Blank Blank

Ethidium Bromide:





S4 Fig:

puromycin



Actin

