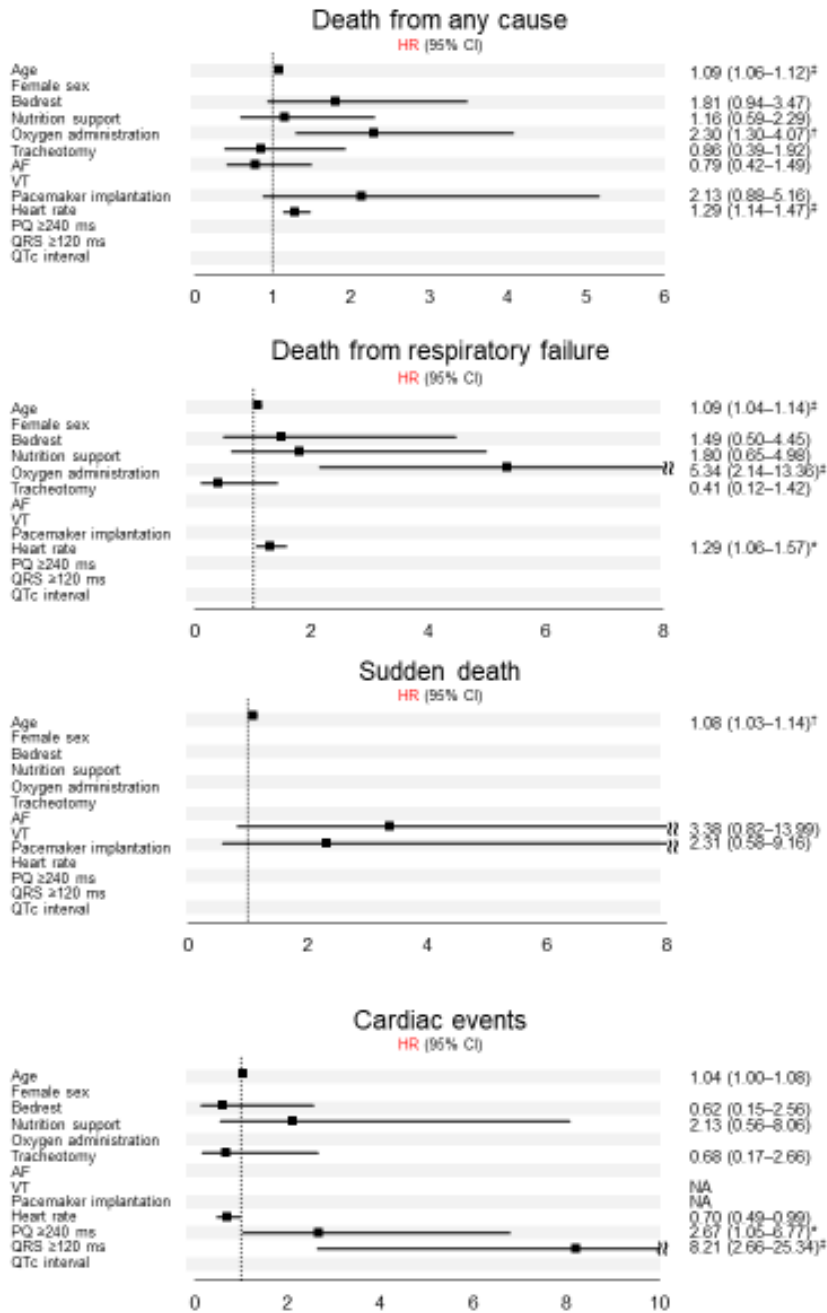


# **SUPPLEMENTAL MATERIAL**

**Figure S1. Multivariate analysis between the characteristics of patients and outcomes.**



Multivariate relative risks and P-values were calculated using the Cox proportional-hazards model for time to death from any cause, death from progressive neuromuscular respiratory failure, sudden death, and incidence of cardiac events. The multivariate models were limited to

variables emerging with a  $P < 0.1$  from the univariate analysis. All covariates, except for age, were time-dependent. P-values: \* $< 0.05$ ; † $< 0.01$ ; ‡ $< 0.001$ . §Hazard ratio per 1-year older. ¶Hazard ratio per 10 bpm increase in heart rate. HR, hazard ratio; NA, not available; AF, atrial fibrillation; VT, ventricular fibrillation.