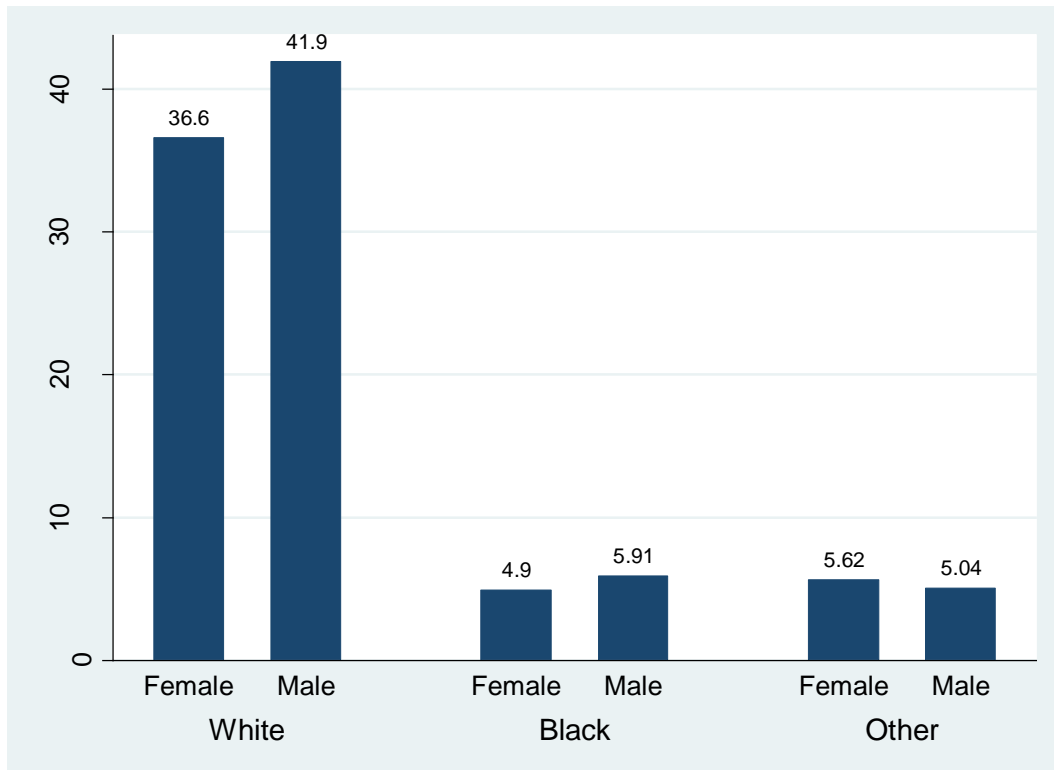


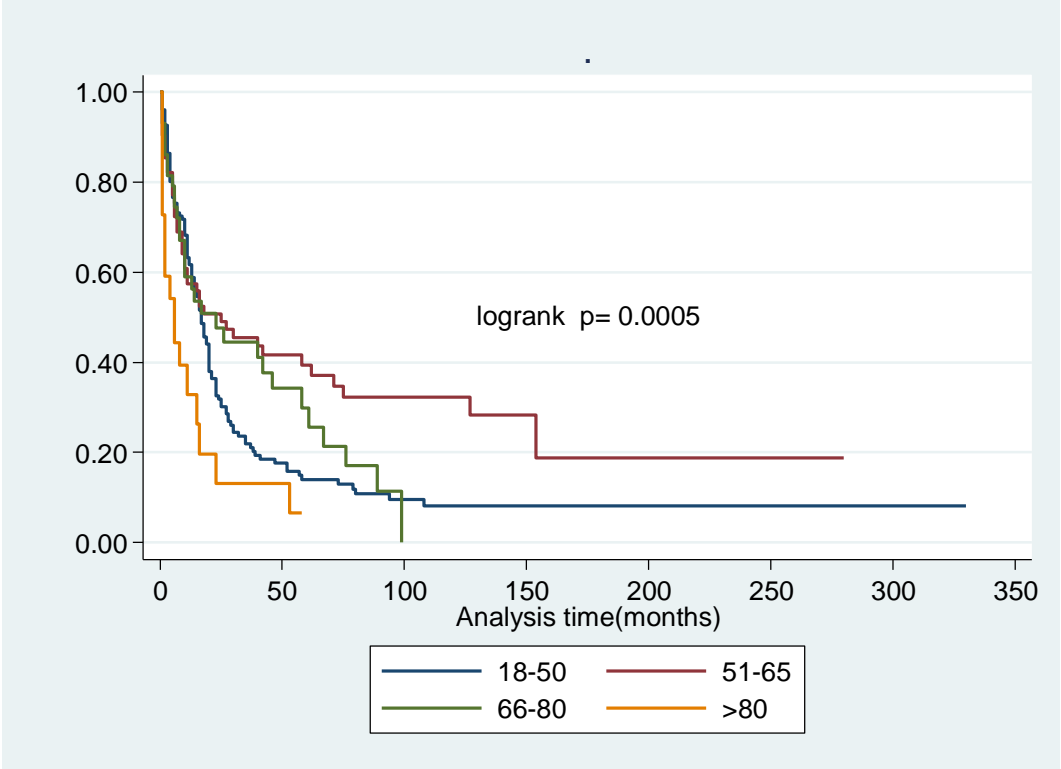
SUPPLEMENTAL MATERIAL

**Figure S1. Racial Difference in the Incidence of Primary Malignant Cardiac Tumors:
Stratified by Sex.**



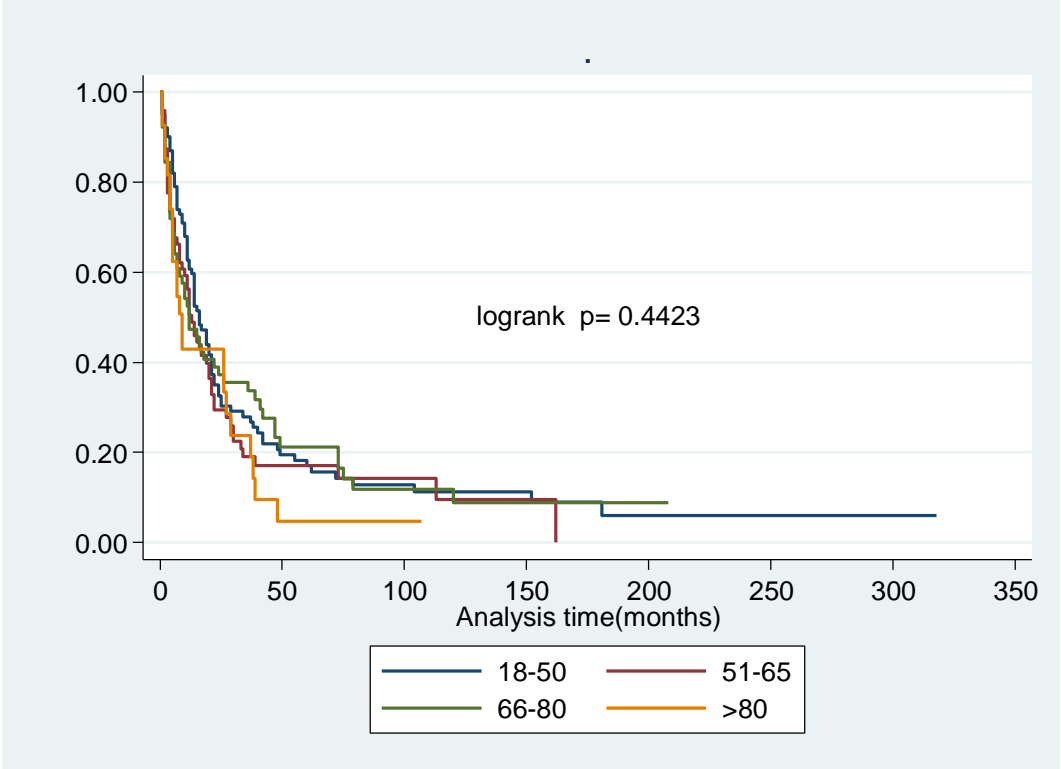
There was statistically significant difference between both sex and males had higher incidence of PMCTs in whites and blacks.

Figure S2. Overall Survival Rate in Males with Primary Malignant Cardiac Tumors: Stratified by Age.



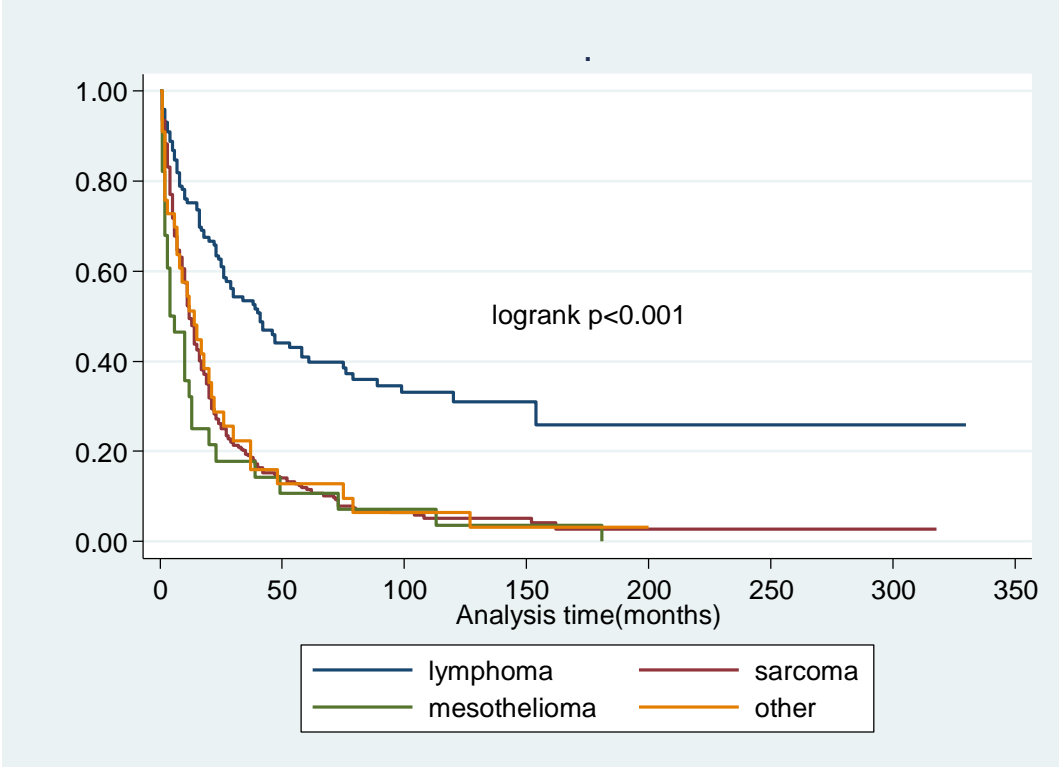
Highest survival rate was observed in patients who were diagnosed early in life.

Figure S3. Overall Survival Rate in Females with Primary Malignant Cardiac Tumors: Stratified by Age.



Highest survival rate was observed in patients who were diagnosed early in life.

Figure S4. Overall Survival Rate by Tumor Type.



Highest survival rate was observed in lymphoma while lowest survival rate was observed in mesothelioma.