

Table S1. Risk factors with Fibrosis-4 score for mortality in patients with COVID-19 receiving respiratory support

Variable	Univariate	Multivariate analysis	
	<i>P</i> value*	<i>P</i> value*	Hazard ratio (95% CI)
Male (yes/no)	0.143		
Comorbidities (yes/no)			
Hypertension	0.392		
Diabetes	0.001	0.008	1.998 (1.202-3.321)
Chronic obstructive pulmonary disease	0.087		
Chronic kidney disease	0.841		
Chronic liver disease	0.226		
ACE inhibitor/ARB use (yes/no)	0.871		
Lymphocyte count, $\times 10^3/\mu\text{L}$	<0.001	0.003	0.999 (0.998-1.000)
C-reactive protein, mg/L	0.584		
Total bilirubin, mg/dL	0.831		
Alkaline phosphatase, U/L	0.725		
Gamma glutamyl transferase, U/L	0.263		
Serum albumin, g/dL	0.773		
Prothrombin time, INR	0.444		
Estimated glomerular filtration rate, mL/min/1.73 m ²	0.002		
SIRS on admission (yes/no)	<0.001		
Fibrosis-4 score	<0.001	<0.001	1.115 (1.069-1.163)

*Calculated by Cox proportional hazards regression test

ACE, angiotensin converting enzyme; ARB, angiotensin II receptor blocker; INR, international normalized ratio, SIRS, systemic inflammatory response syndrome.

Table S2. Adjusted hazard ratio of high Fibrosis-4 index for mortality in patients with COVID-19 receiving respiratory support

	Death	
	HR (95% CI)	<i>P</i> -value
High Fibrosis-4 index (≥ 4.95) (yes vs. no)		
Unadjusted	3.93 (2.44-6.33)	<0.001
Model 1	3.01 (1.84-4.93)	<0.001
Model 2	3.02 (1.84-4.96)	<0.001
Model 3	2.80 (1.64-4.65)	<0.001

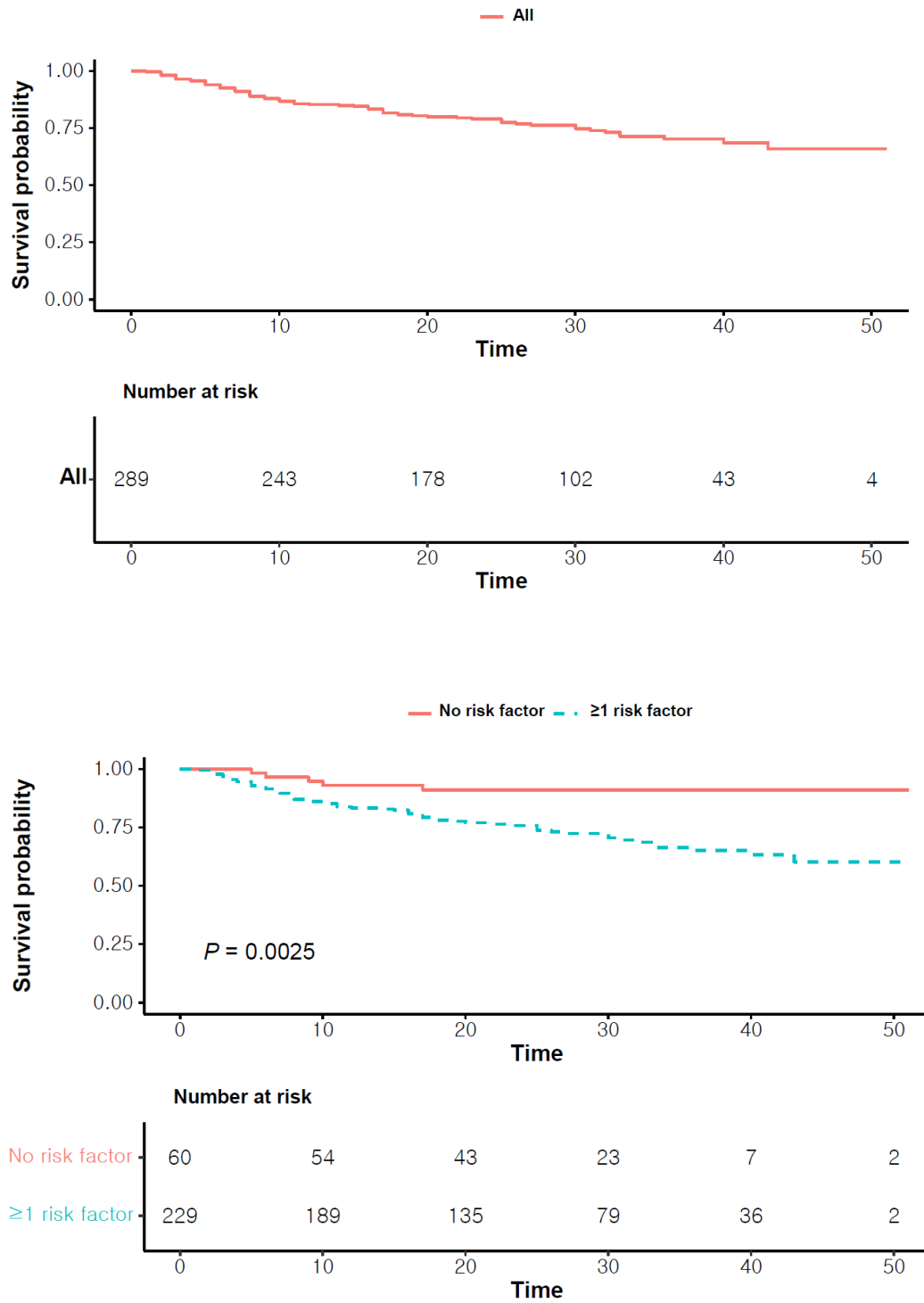
HR, hazard ratio; CI, confidential interval

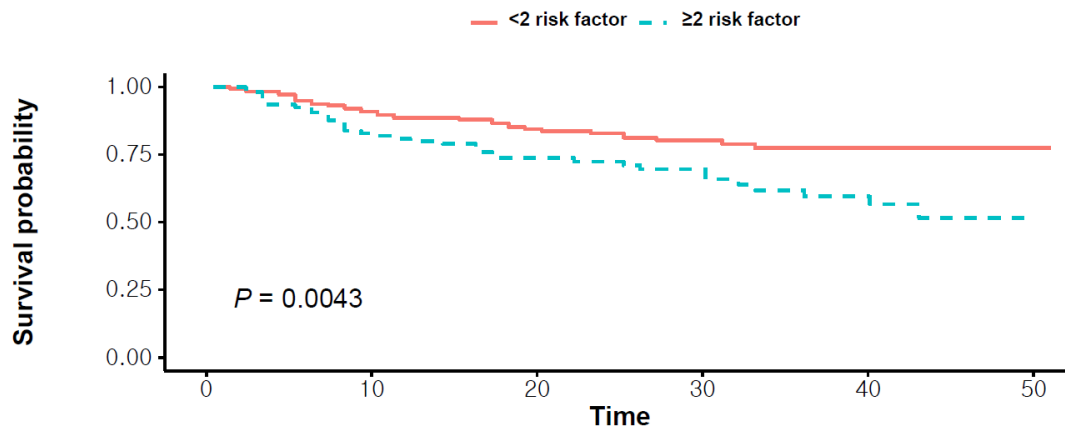
Model 1 was adjusted for age, gender.

Model 2 was adjusted for chronic liver disease, diabetes, hypertension, chronic kidney disease, and chronic obstructive pulmonary disease inclusive of model 1.

Model 3 was adjusted for lymphocyte count, C-reactive protein, and presence of systemic inflammatory response syndrome inclusive of model 2.

Figure S1. Survival of the patients with COVID-19 receiving respiratory support as the number of risk factors

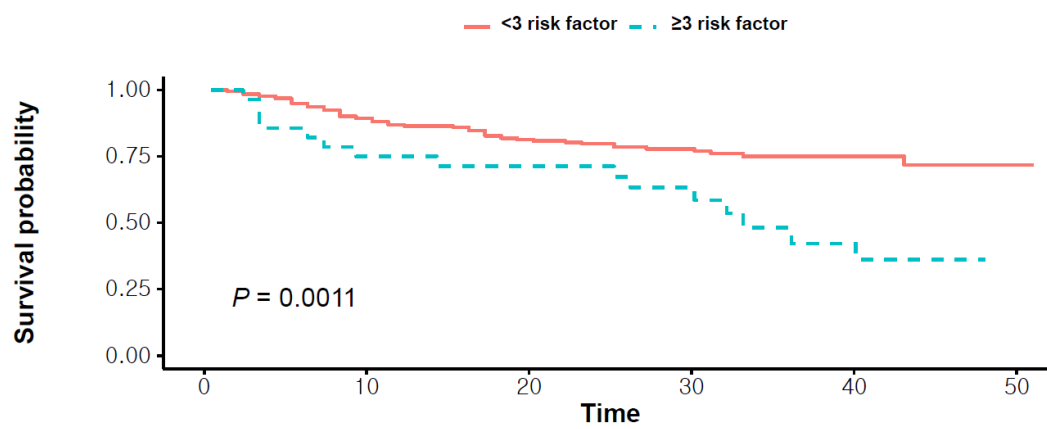




Number at risk

	0	10	20	30	40	50
< 2 risk factor	181	157	116	65	22	3
≥2 risk factor	108	86	62	37	21	1

Time

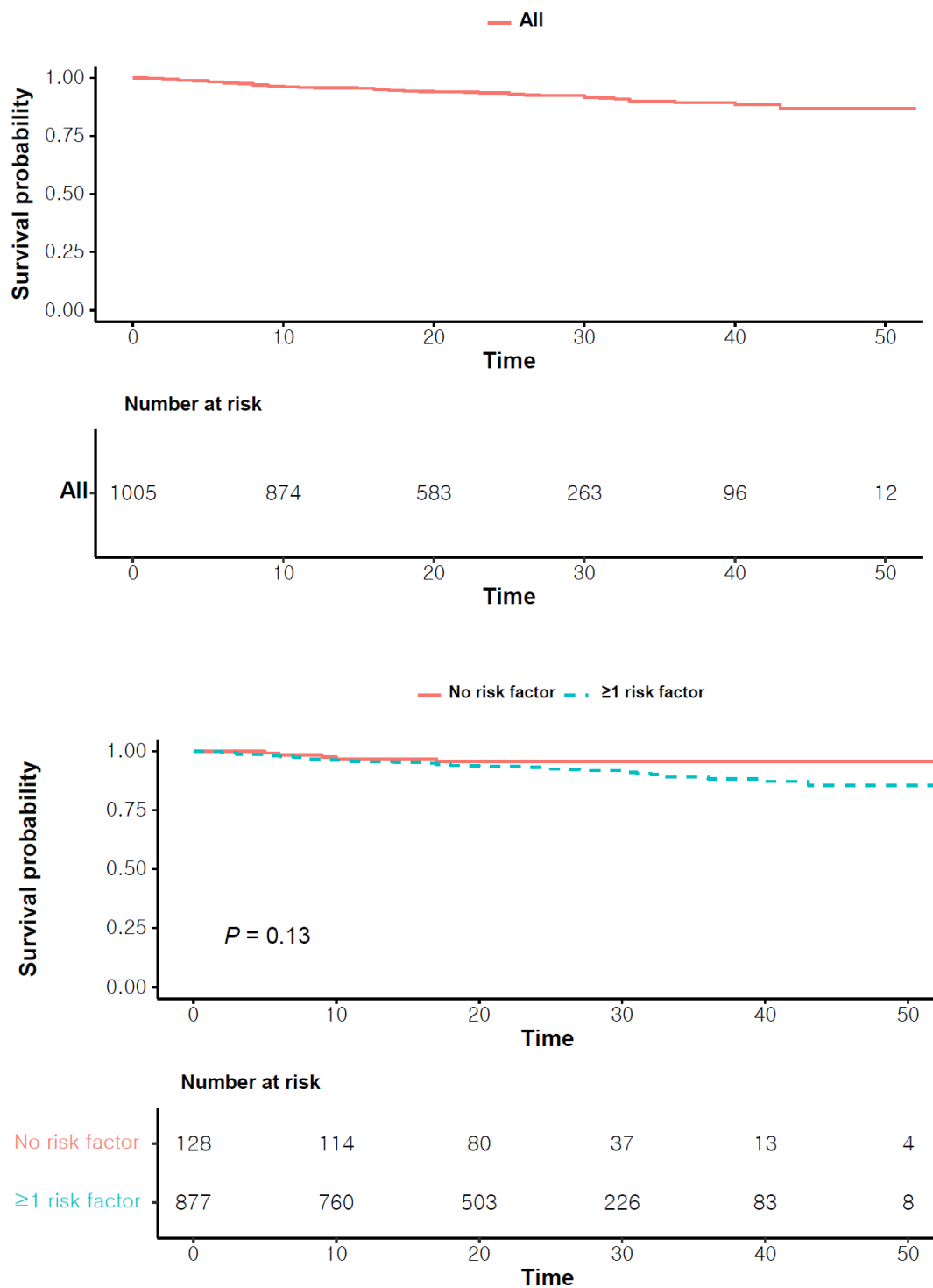


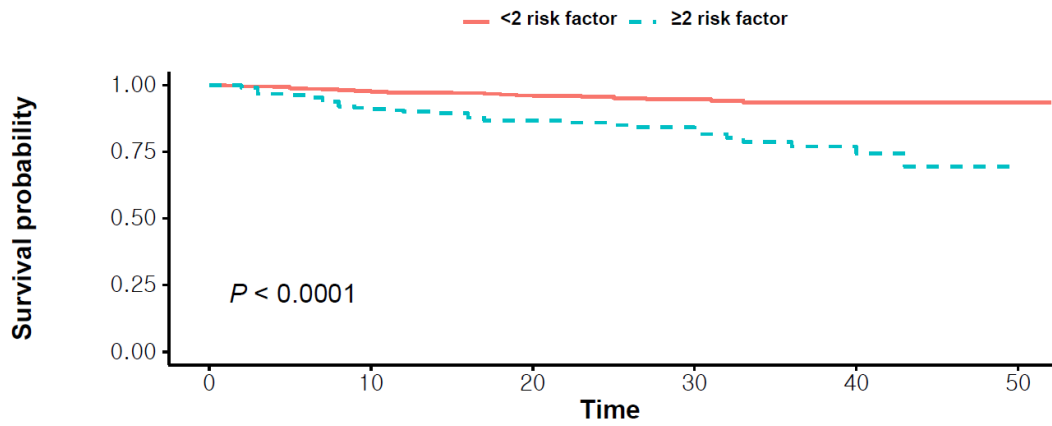
Number at risk

	0	10	20	30	40	50
< 2 risk factor	261	222	160	89	36	4
≥2 risk factor	28	21	18	13	7	0

Time

Figure S2. Survival of the entire group of patients with COVID-19 as the number of risk factors

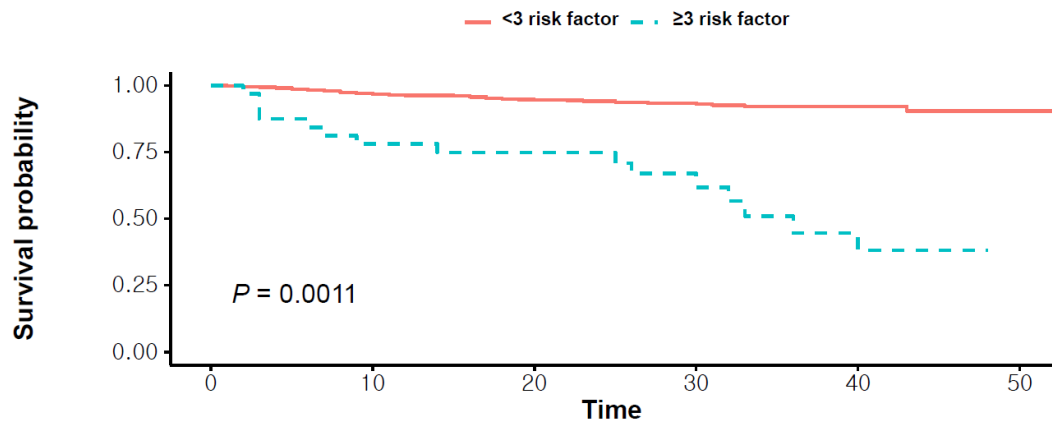




Number at risk

< 2 risk factor	787	684	448	198	66	11
≥2 risk factor	218	190	135	65	30	1

Time



Number at risk

< 2 risk factor	973	849	562	250	89	12
≥2 risk factor	32	25	21	13	7	0

Time