

Supplementary Materials

Uncompatibilized PBAT/PLA Blends: Manufacturability, Miscibility and Properties

Shen Su ^{1,2,*}, Mona Duhme ¹ and Rodion Kopitzky ¹

¹ Department of Circular and Bio-based Plastics, Fraunhofer UMSICHT, Institute for Environment, Safety and Energy Technology, Osterfelder Str. 3, 46047 Oberhausen, Germany; mona.duhme@umsicht.fraunhofer.de (M.D.); rodion.kopitzky@umsicht.fraunhofer.de (R.K.)

² Department of Mechanical Engineering, Ruhr-University Bochum, Universitaetsstr. 150, 44780 Bochum, Germany

* Correspondence: shen.su@umsicht.fraunhofer.de; Tel. +49-208-85981422

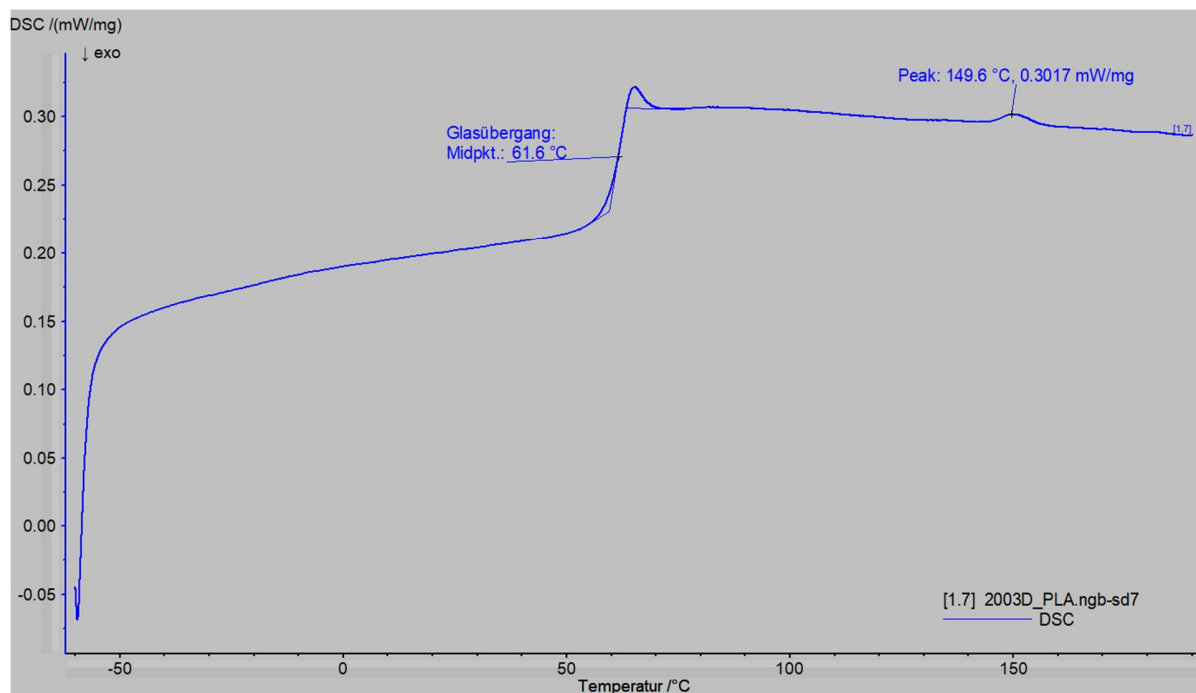


Figure S1. DSC of pure PLA analyzed by the software Netzsch Proteus Thermal analysis

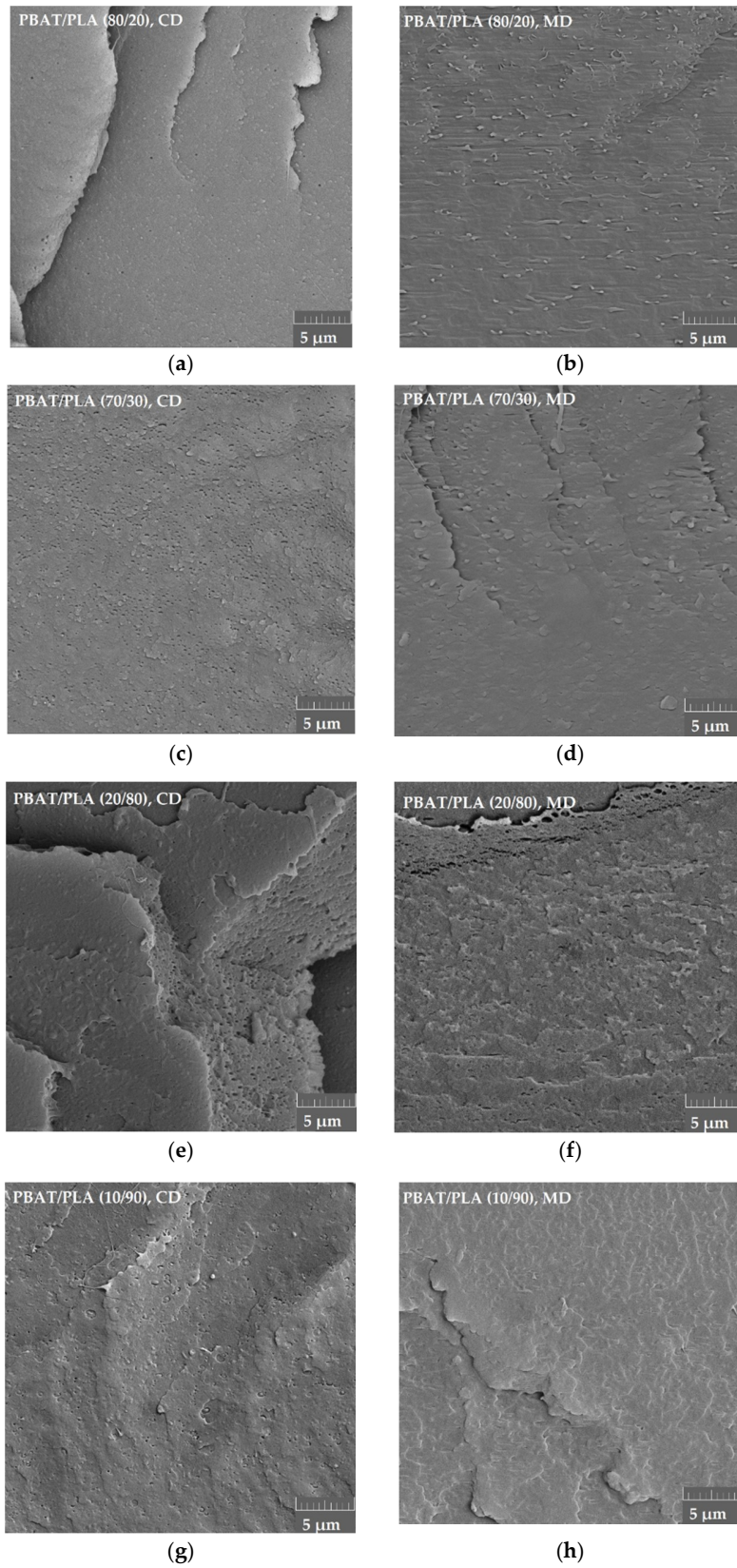


Figure S2. SEM of further flat films made of PBAT/PLA blends: (a) (80/20) in CD, (b) (80/20) in MD, (c) (70/30) in CD, (d) (70/30) in MD, (e) (20/80) in CD, (f) (20/80) in MD, (g) (10/90) in CD, (h) (10/90) in MD.