

## **Evaluation of Various Solvent Extracts of *Tetrastigma leucostaphylum* (Dennst.) Alston ex Mabb leaves, A Bangladeshi Traditional Medicine used for the Treatment of Diarrhea**

Sajib Rudra<sup>1, ¶</sup>, Md. Adnan<sup>2, ¶</sup>, Nazim Uddin Emon<sup>3</sup>, Afroza Tahamina<sup>4</sup>, Mohammad Shakil<sup>1</sup>, Md. Helal Uddin Chowdhury<sup>1</sup>, Mohammad Omar Faruque<sup>1</sup>, James W. Barlow<sup>5</sup>, Sheikh Bokhtear Uddin<sup>1,\*</sup>

<sup>1</sup> Ethnobotany and Pharmacognosy Lab, Department of Botany, University of Chittagong, Chittagong-4331, Bangladesh

<sup>2</sup> Department of Bio-Health Technology, Kangwon National University, Chuncheon 24341, Republic of Korea;

<sup>3</sup> Department of Pharmacy, International Islamic University Chittagong, Chittagong 4318, Bangladesh,

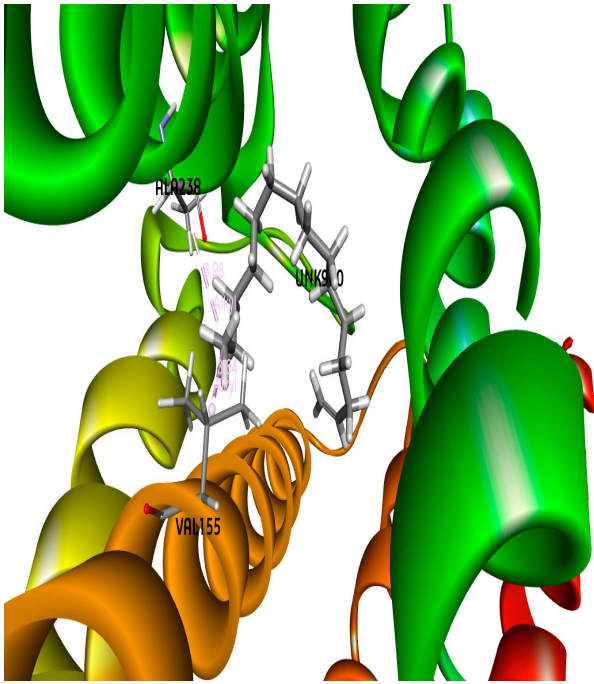
<sup>4</sup> Beijing Advanced Innovation Center for Food Nutrition and Human Health, Beijing Technology and Business University 100048;

<sup>5</sup> Department of Chemistry, Royal College Surgeons, Dublin-D02YN77, Ireland.

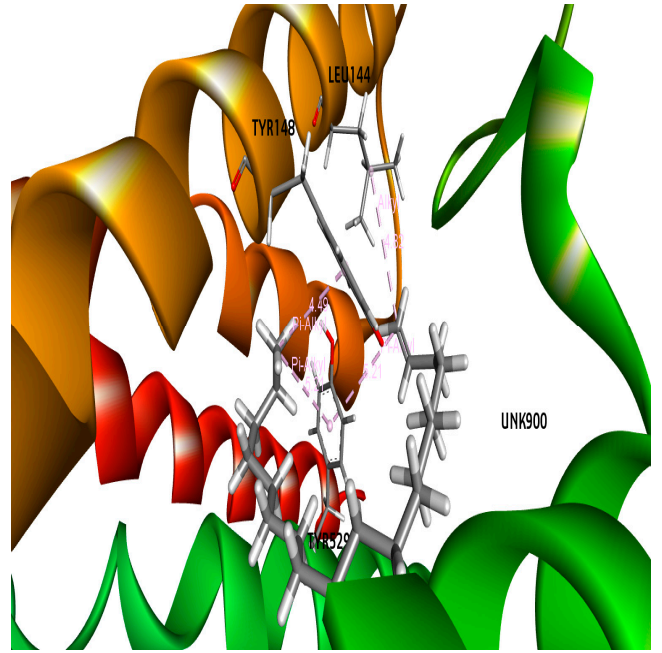
¶ These authors contributed equally to this work

\* Correspondence: Sheikh Bokhtear Uddin; Email: [bokhtear@cu.ac.bd](mailto:bokhtear@cu.ac.bd); Tel: +8801711065377

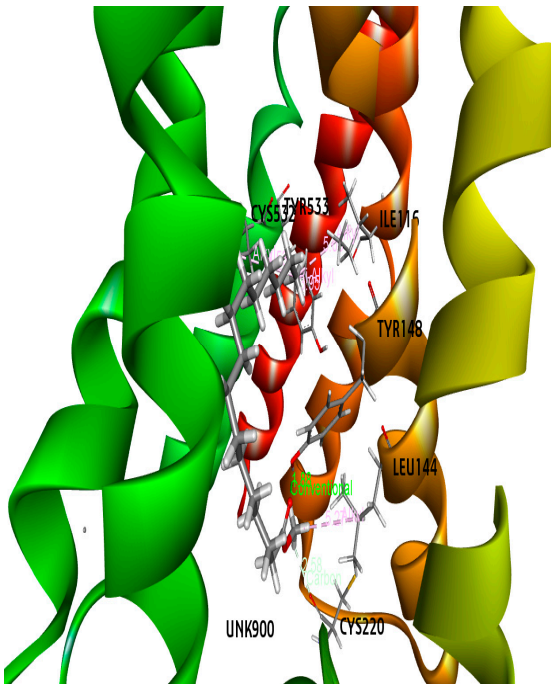
**Running title:** Antidiarrheal activities of *Tetrastigma leucostaphylum* (Dennst.)



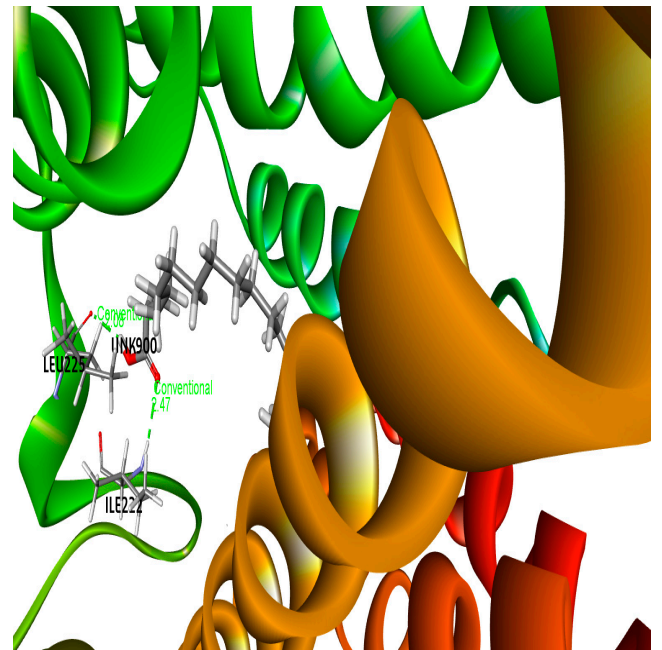
A



B



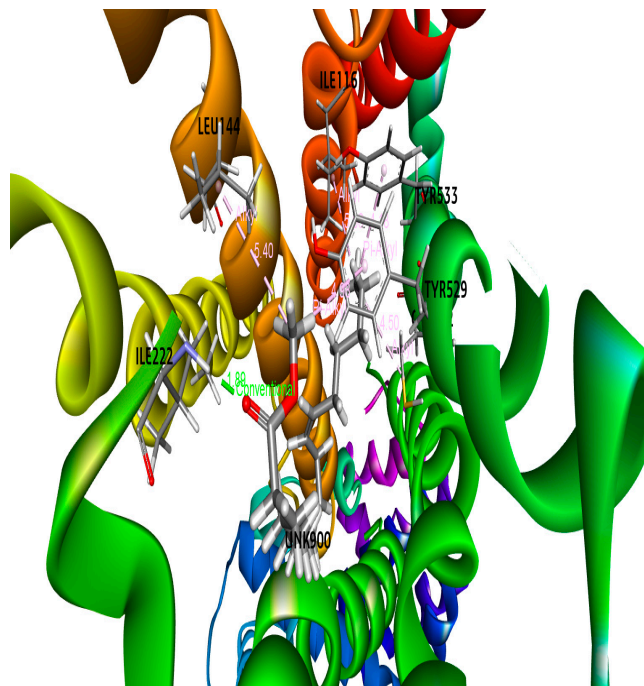
C



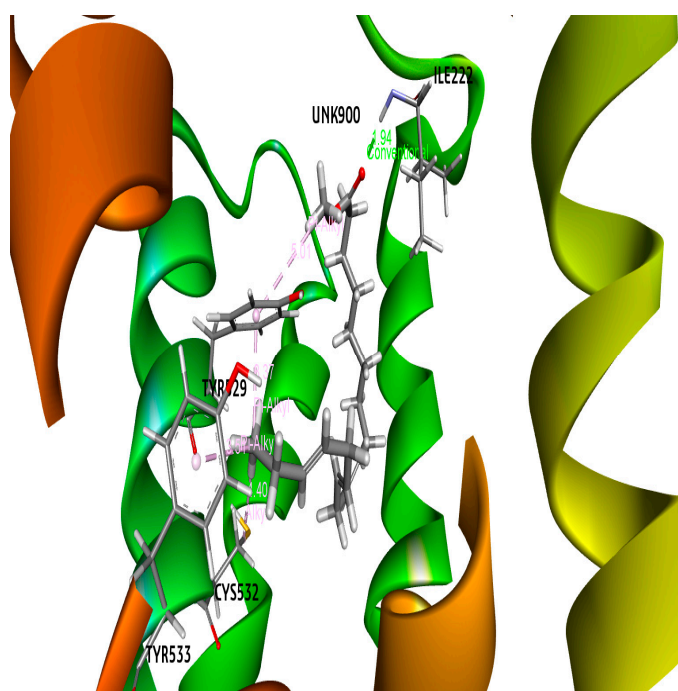
D



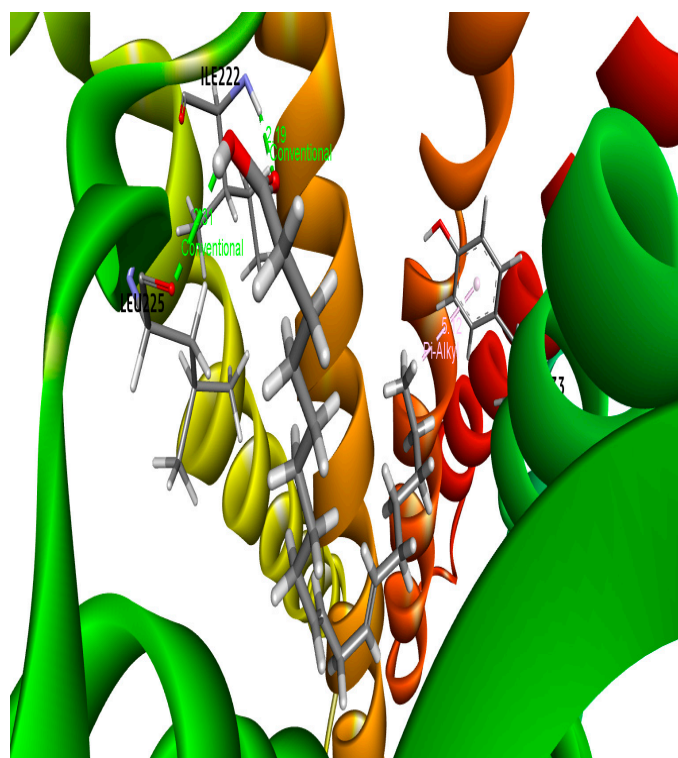
E



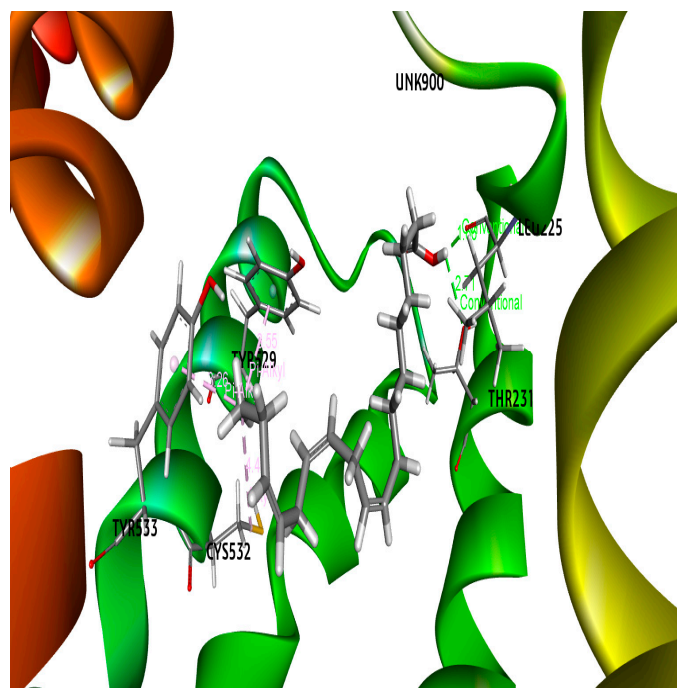
F



G

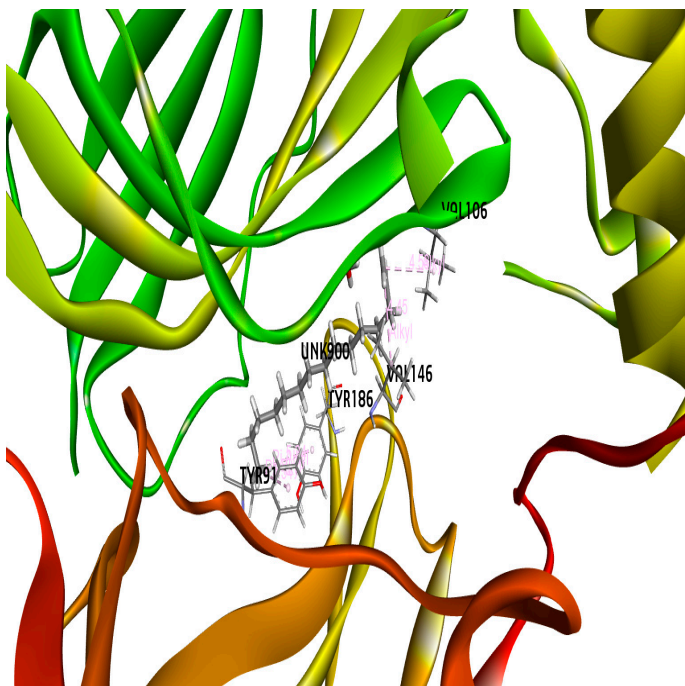


H

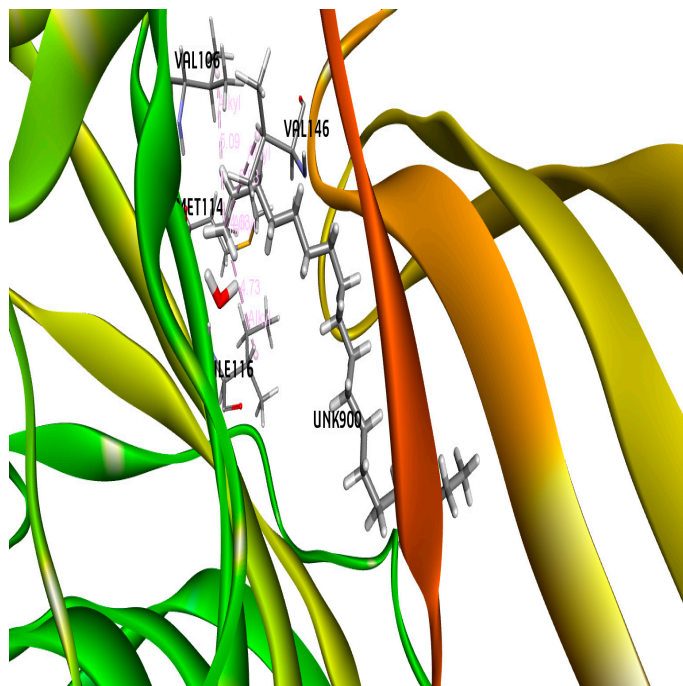


I

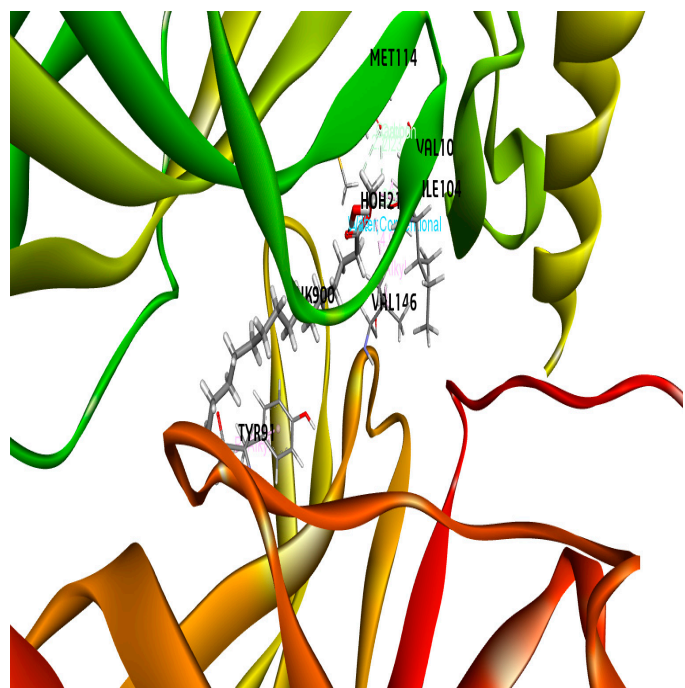
**Figure 1.** 3D Protein-Ligand complex for (A) Pentadecene, (B) Nonadecene, (C) Methyl palmitate, (D) Palmitic acid, (E) Behenic alcohol, (F) Methyl lineoleate, (G) Methyl elaidolinolenate, (H) Acidelinoleique, (I) Linolenic acid docked to the M3 muscarinic acetylcholine receptor (PDB ID : 4U14).



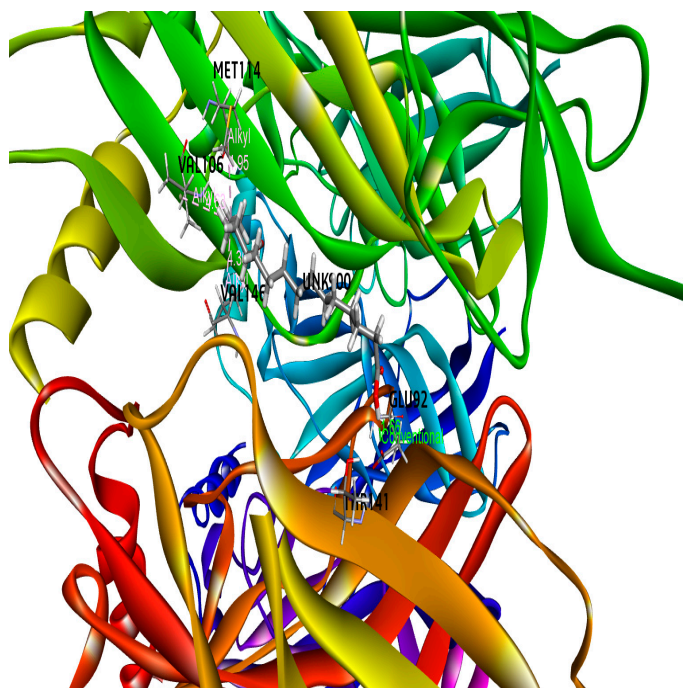
A



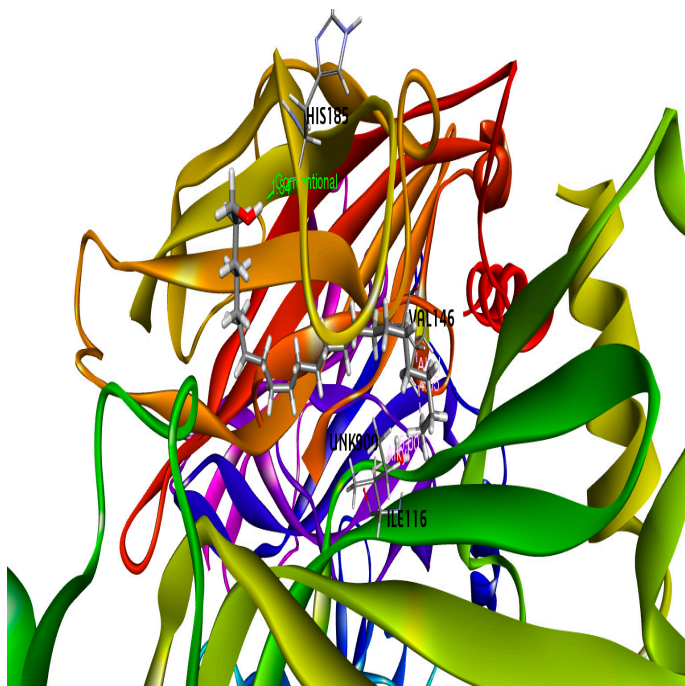
B



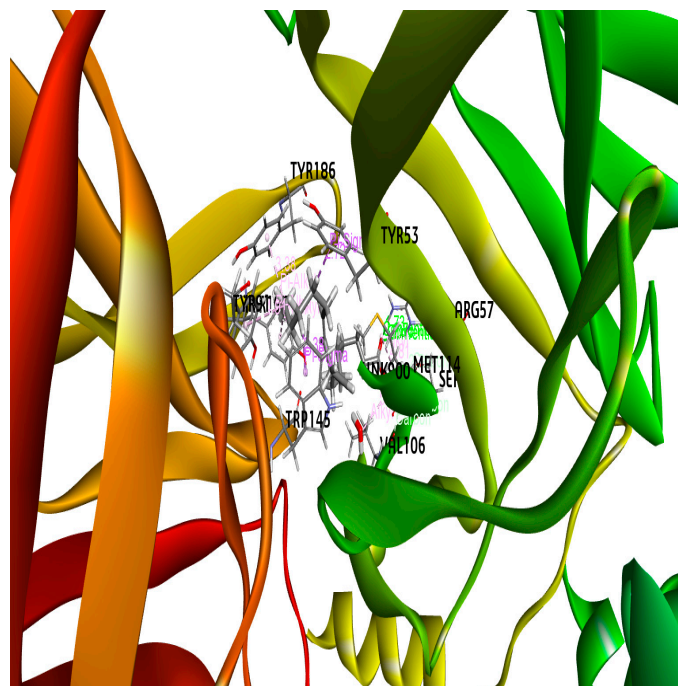
C



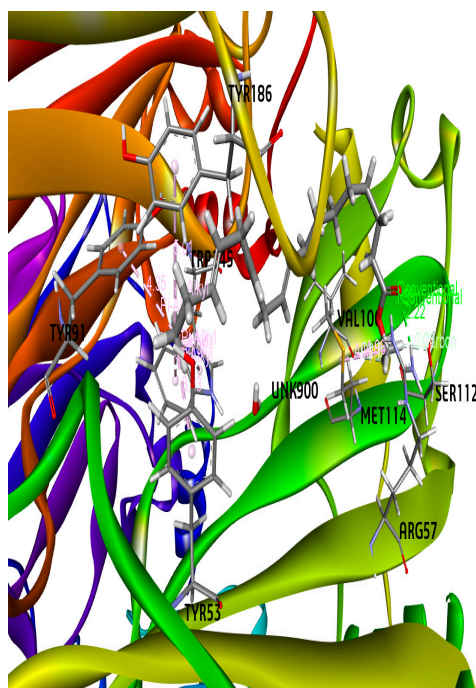
D



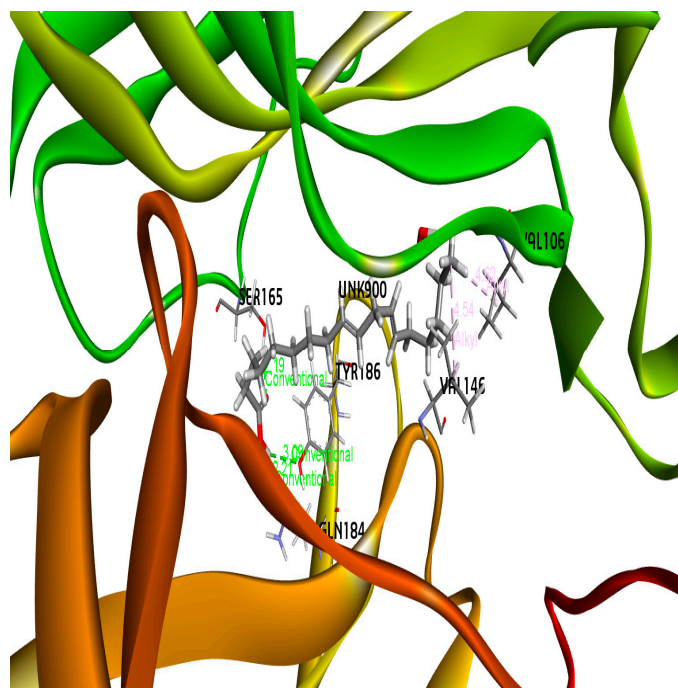
E



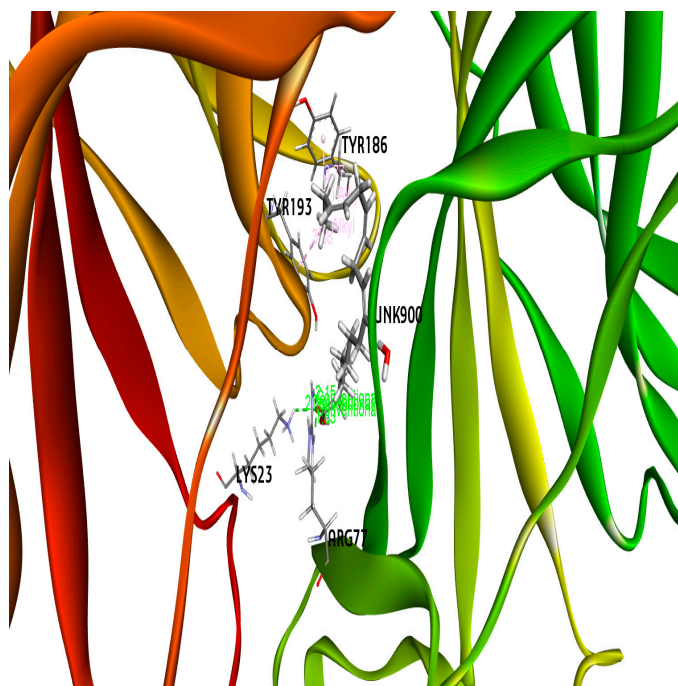
F



G

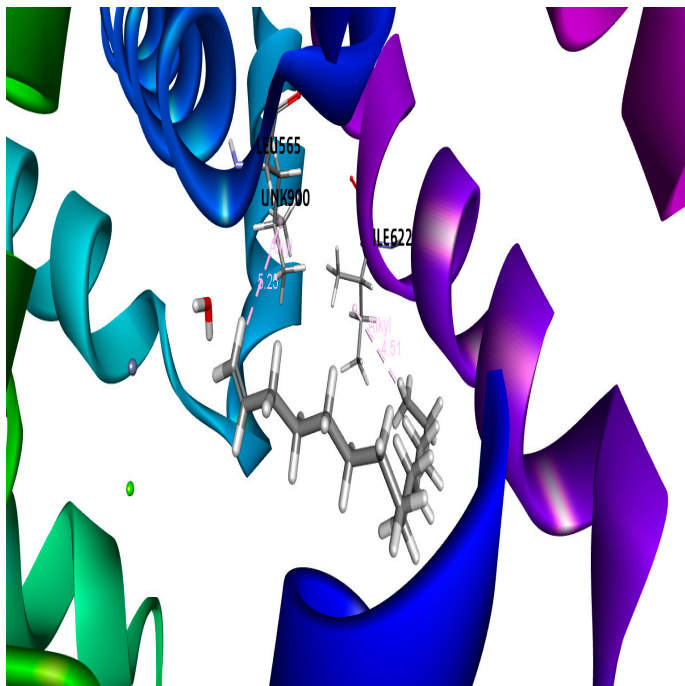


H

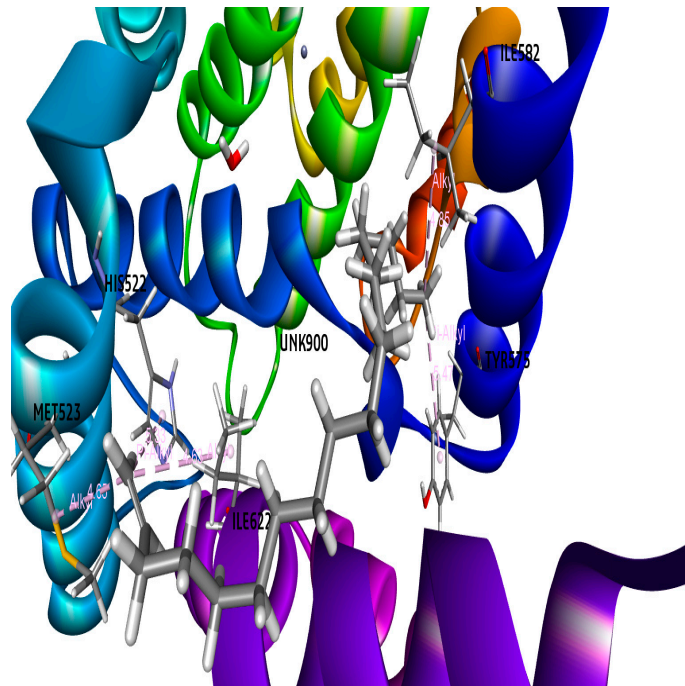


I

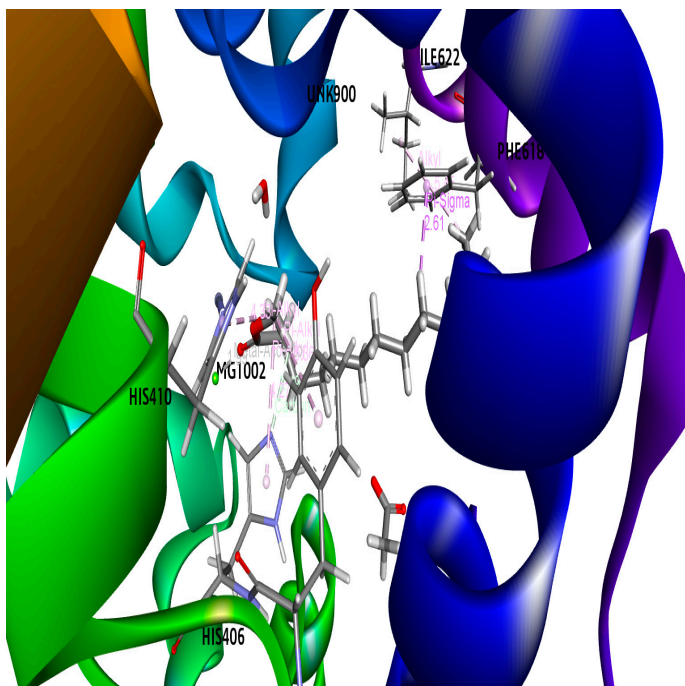
**Figure 2.** 3D Protein-Ligand complex for (A) Pentadecene, (B) Nonadecene, (C) Methyl palmitate, (D) Palmitic acid, (E) Behenic alcohol, (F) Methyl lineoleate, (G) Methyl elaidolinolenate, (H) Acidelinoleique, (I) Linolenic acid docked to the 5-HT<sub>3</sub> receptor (PDB ID : 5AIN).



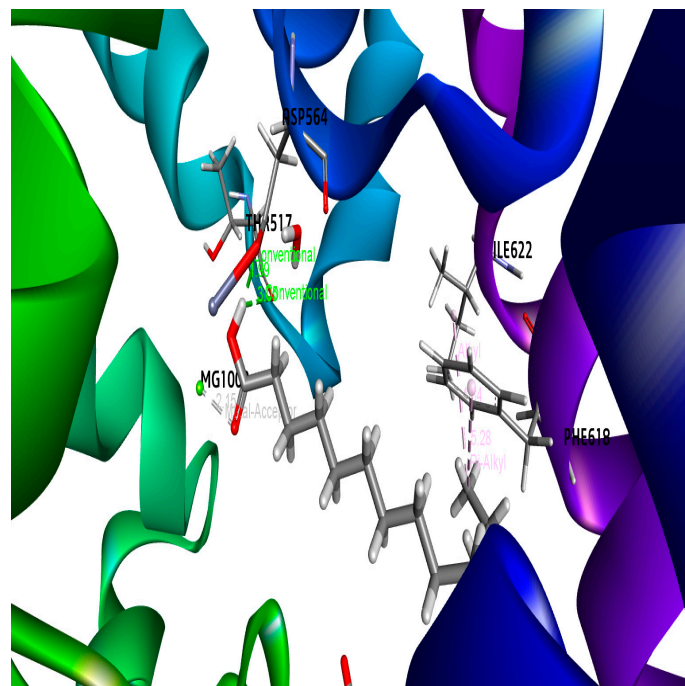
A



B

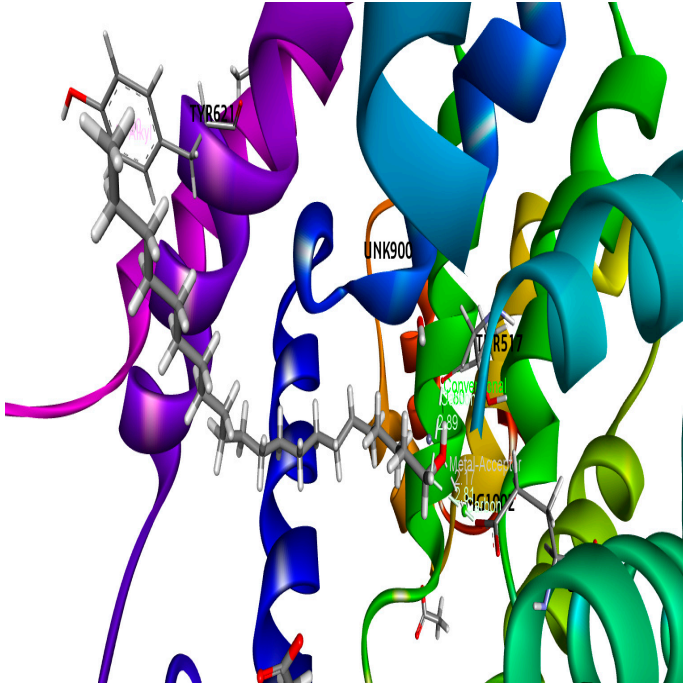


C

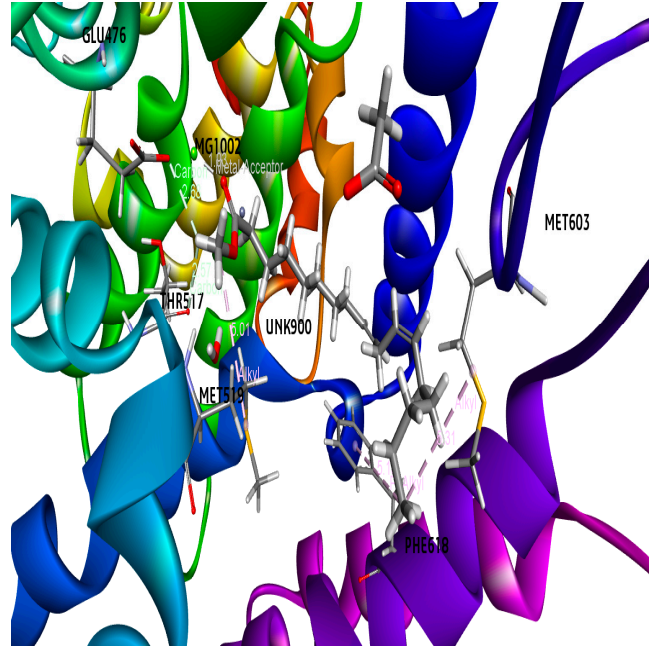


D

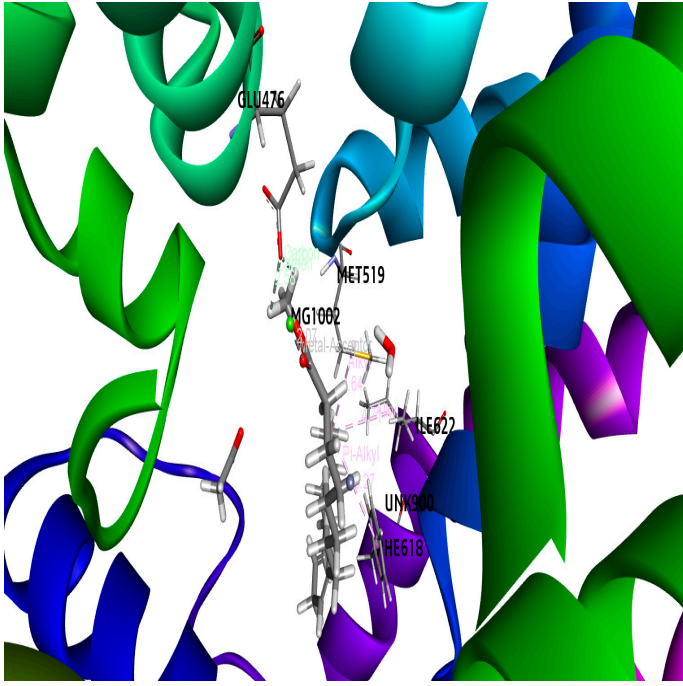




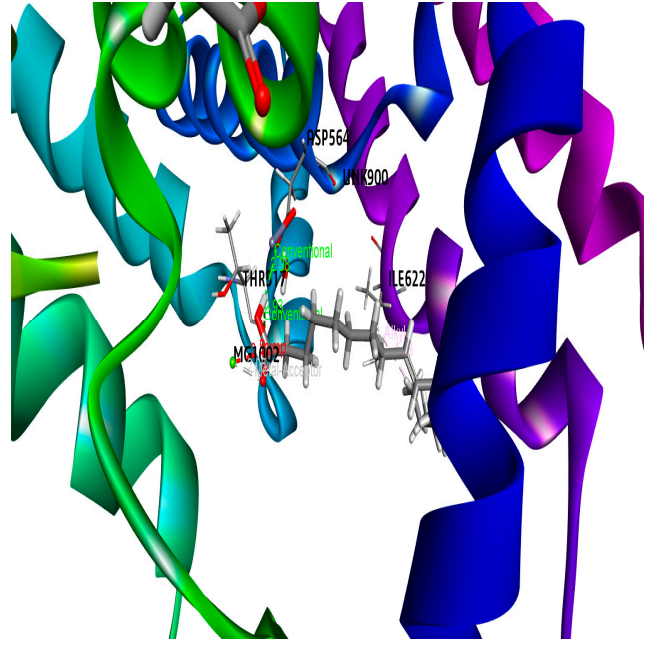
E



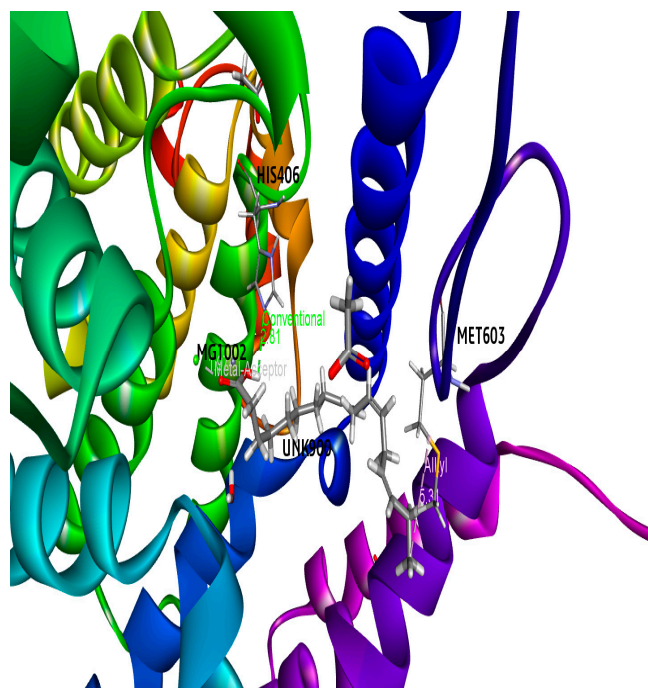
F



G

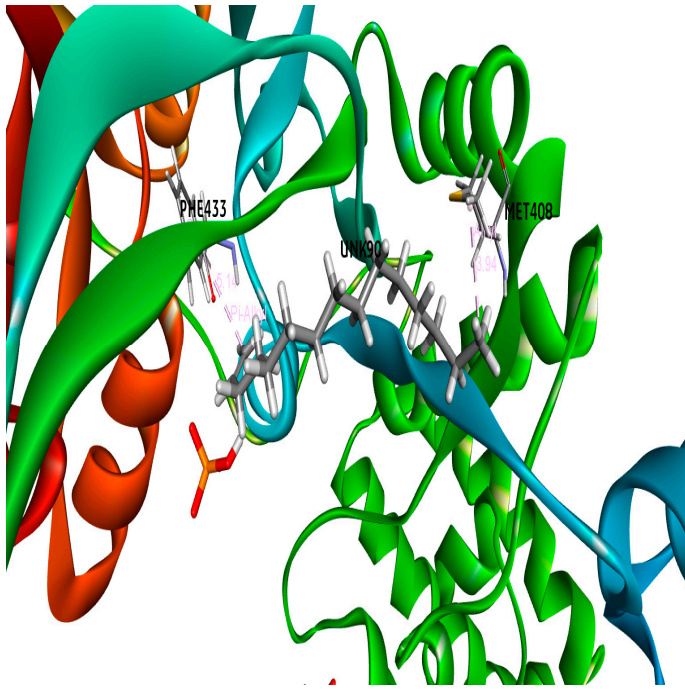


H

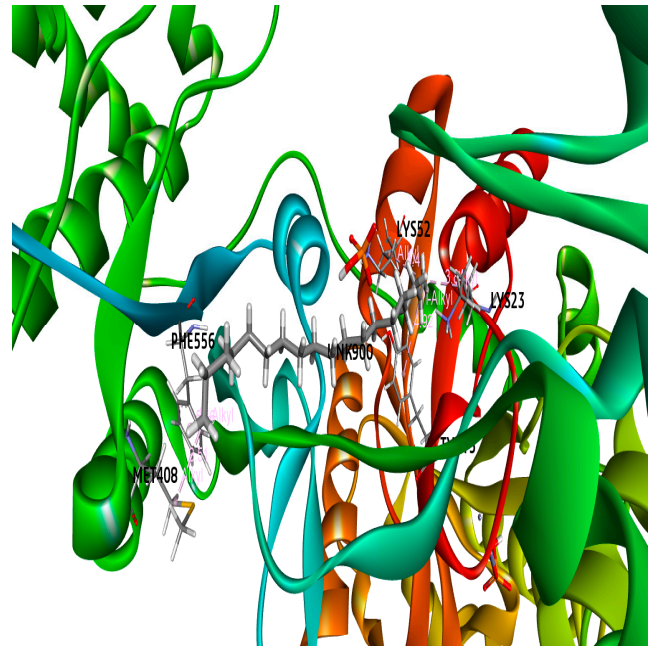


I

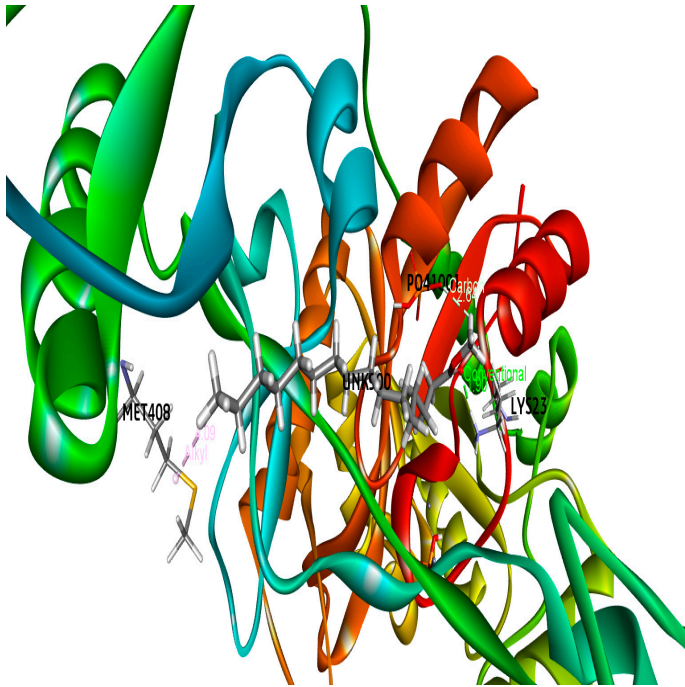
**Figure 3.** 3D Protein-Ligand complex for (A) Pentadecene, (B) Nonadecene, (C) Methyl palmitate, (D) Palmitic acid, (E) Behenic alcohol, (F) Methyl lineoleate, (G) Methyl elaidolinolenate, (H) Acidelinoleique, (I) Linolenic acid docked to the gut inhibitory Phosphodiesterase receptor (PDB ID : 5LAQ).



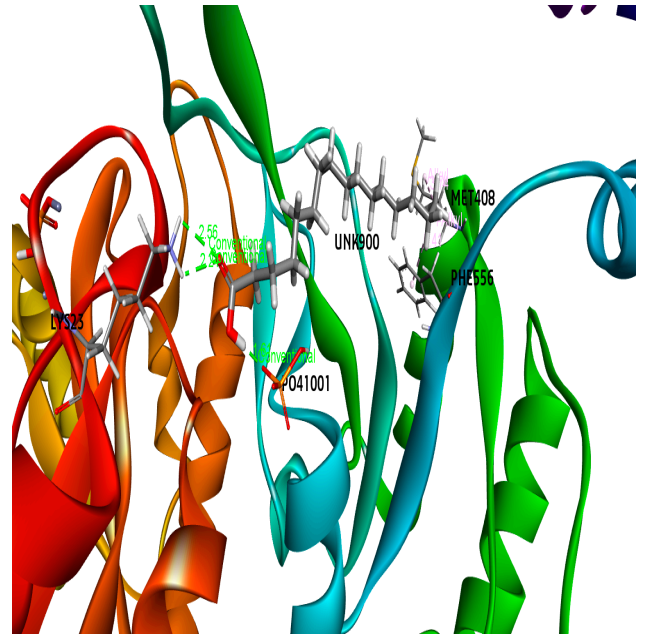
A



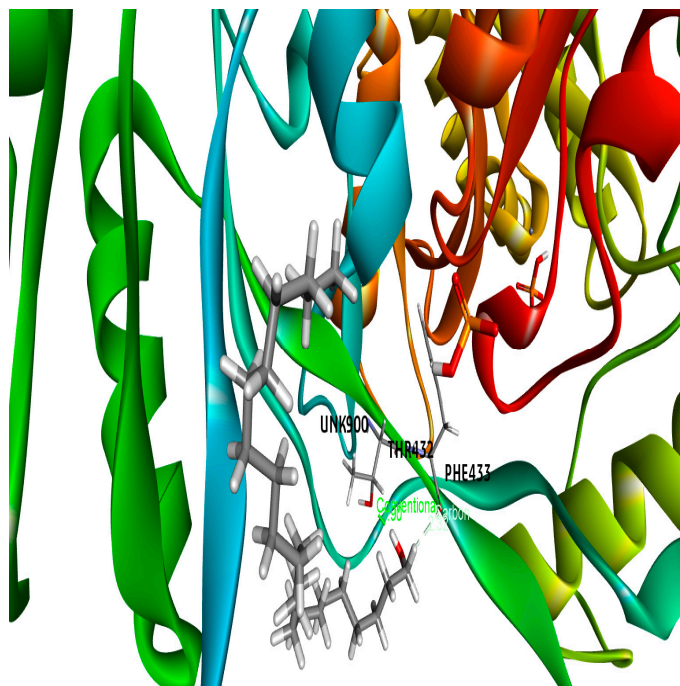
B



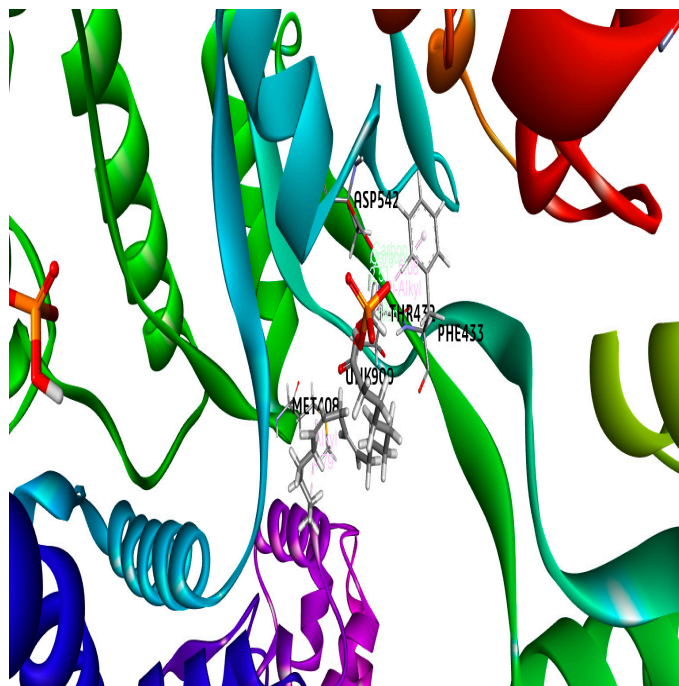
C



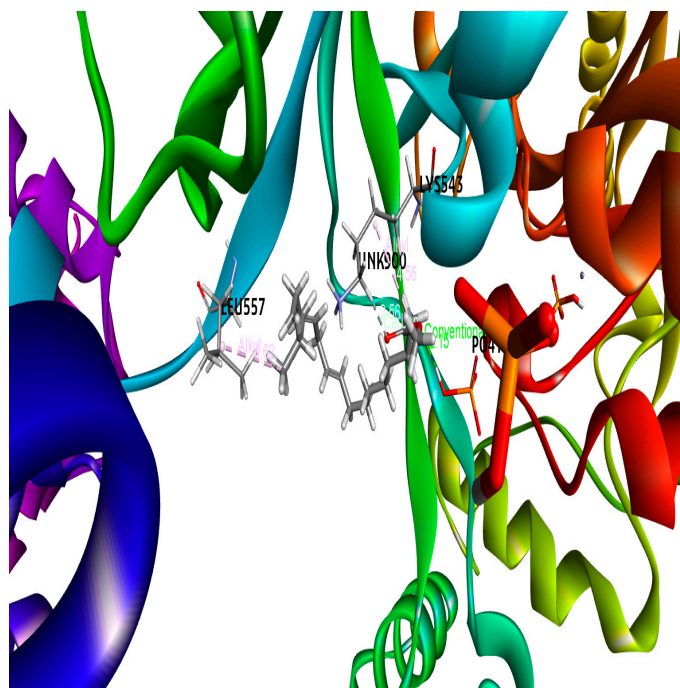
D



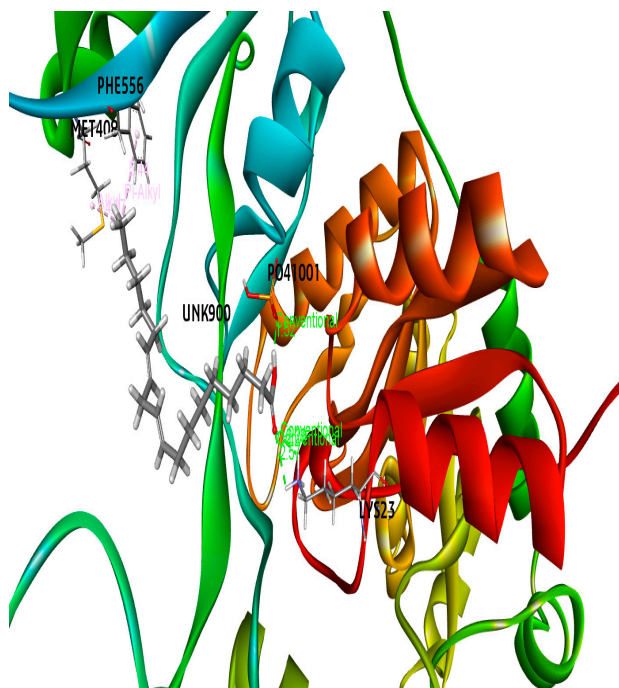
E



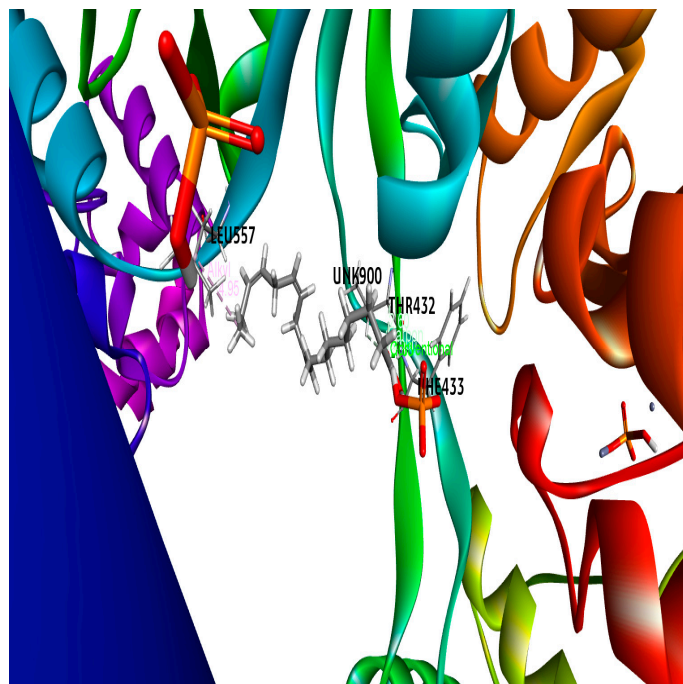
F



G

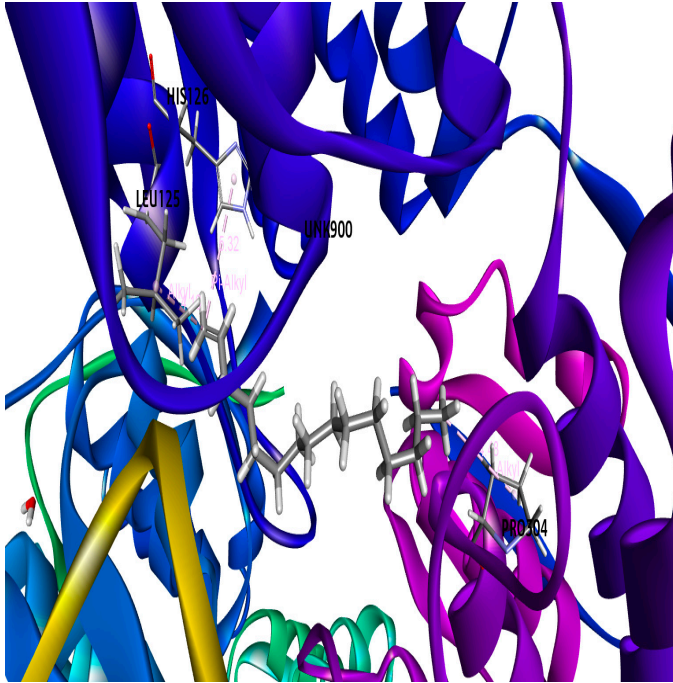


H

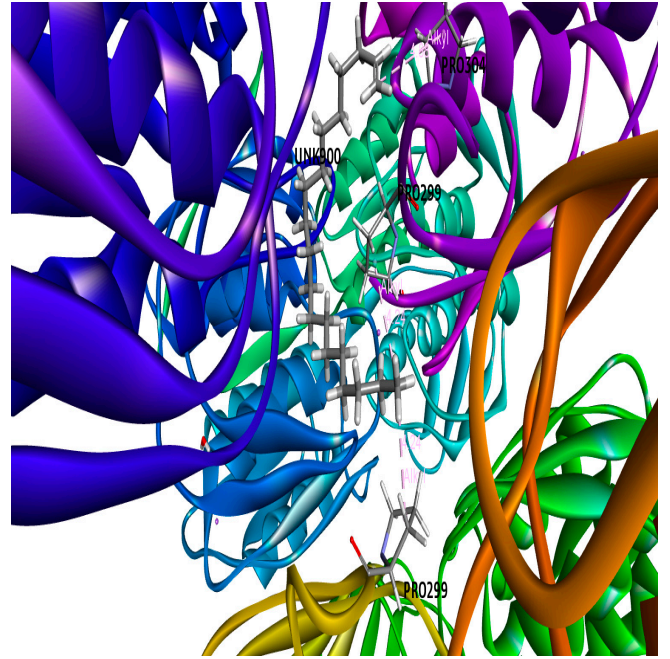


I

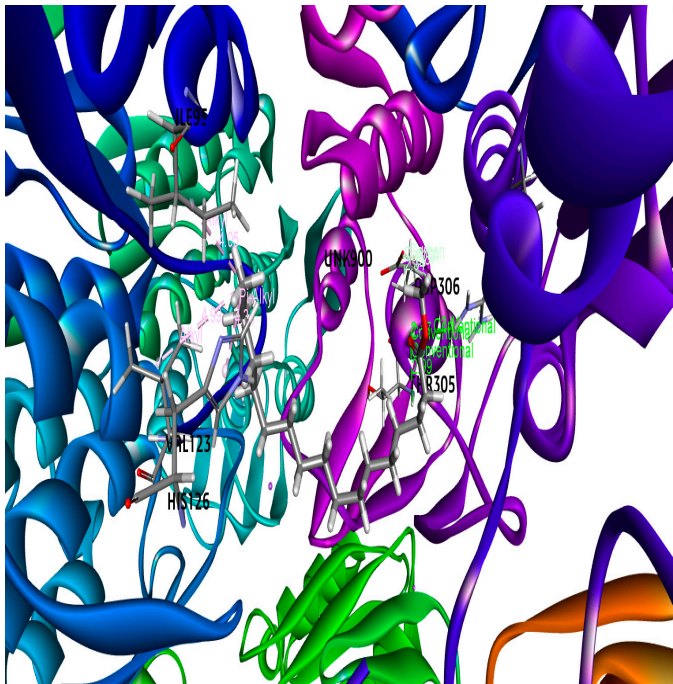
**Figure 4.** 3D Protein-Ligand complex for (A) Pentadecene, (B) Nonadecene, (C) Methyl palmitate, (D) Palmitic acid, (E) Behenic alcohol, (F) Methyl lineoleate, (G) Methyl elaidolinolenate, (H) Acidelinoleique, (I) Linolenic acid docked the DNA polymerase III subunit alpha (PDB ID : 4JOM).



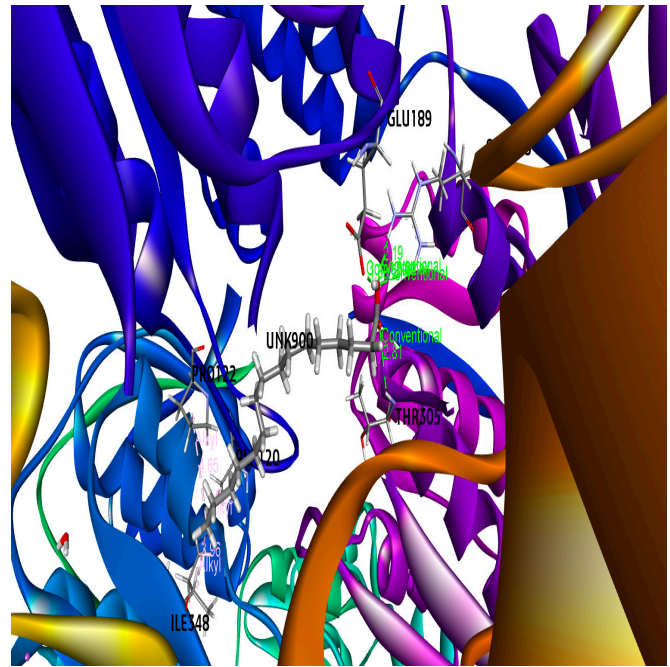
A



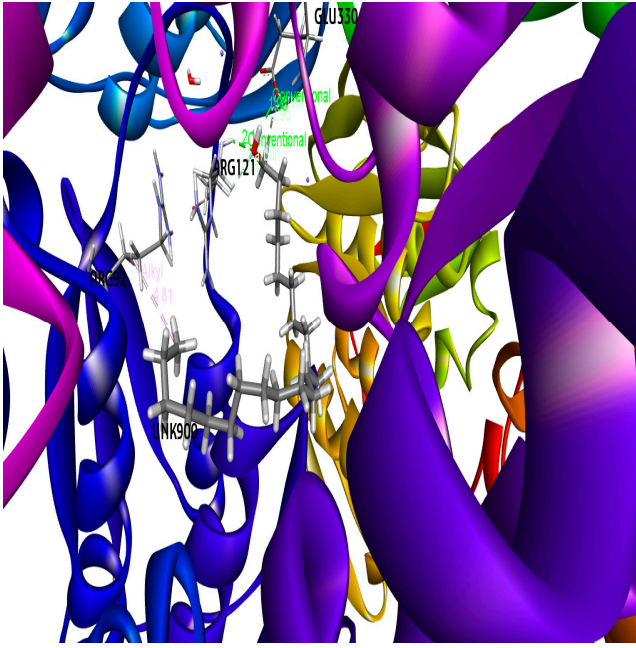
B



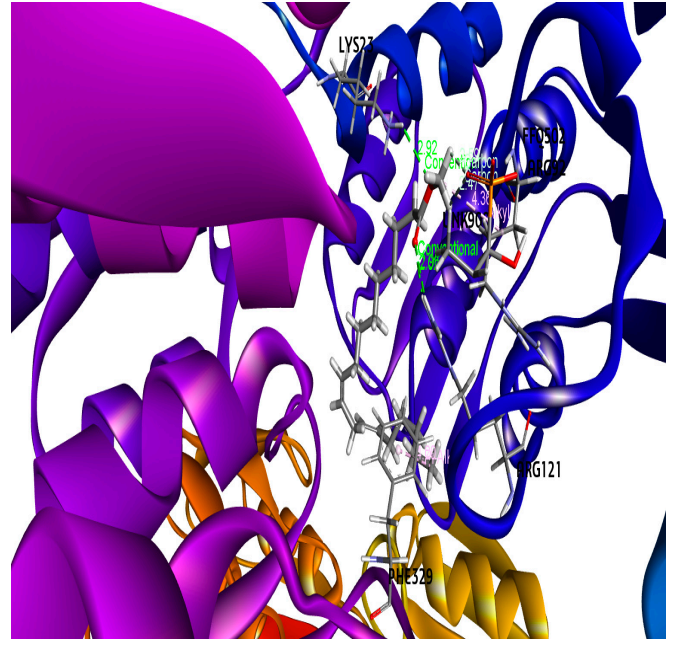
C



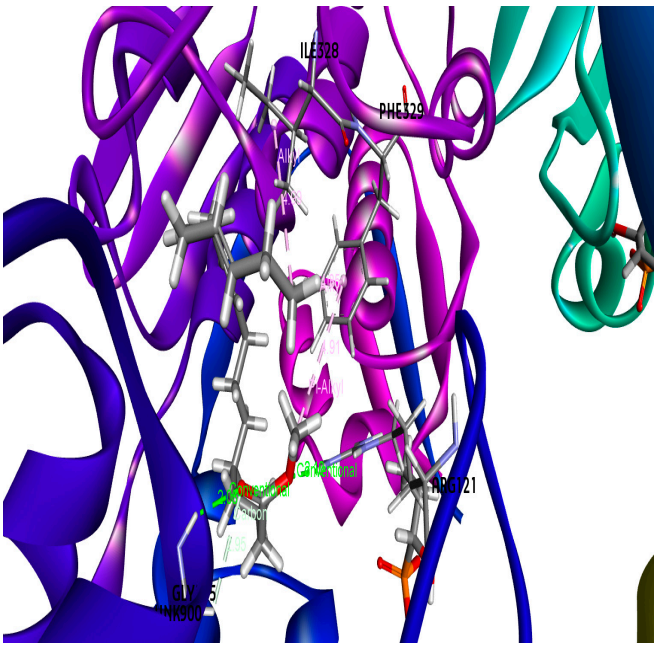
D



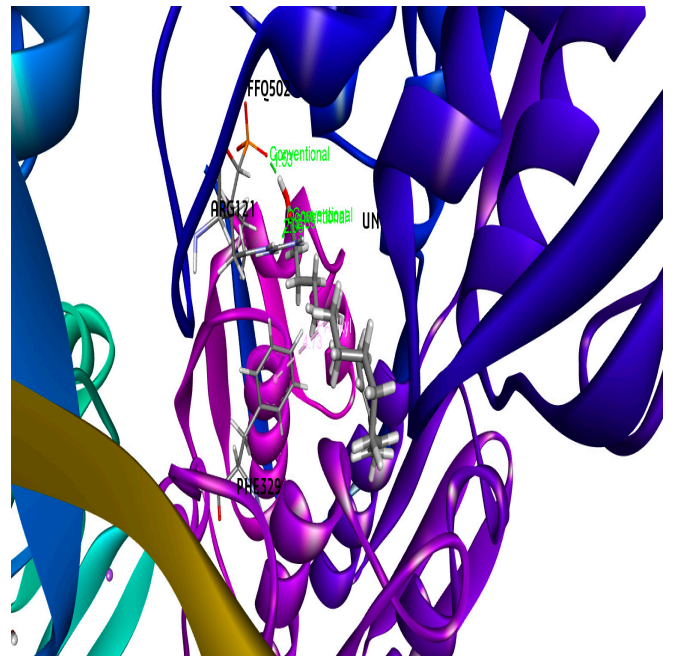
E



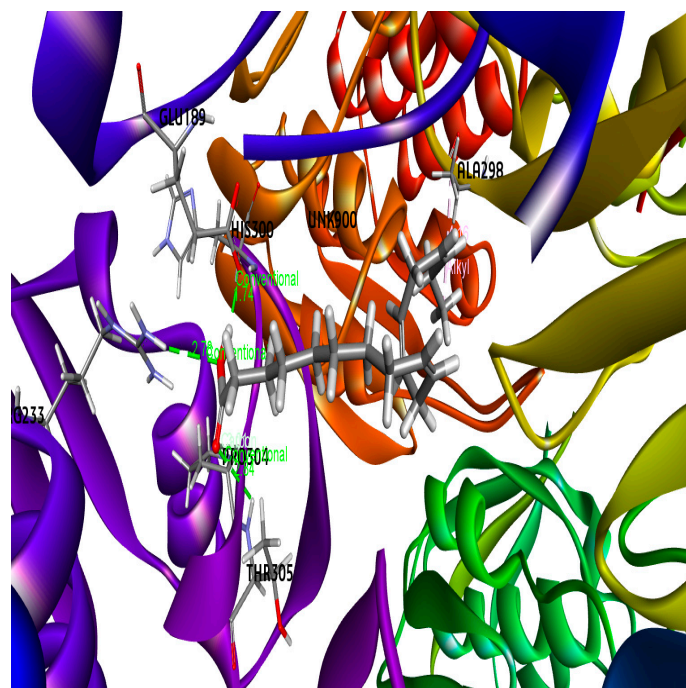
F



G



H



I

**Figure 5.** 3D Protein-Ligand complex for (A) Pentadecene, (B) Nonadecene, (C) Methyl palmitate, (D) Palmitic acid, (E) Behenic alcohol, (F) Methyl lineoleate, (G) Methyl elaidolinolenate, (H) Acidelinoleique, (I) Linolenic acid docked the UDP-*N*-acetylglucosamine-1-carboxyvinyltransferase (PDB ID : 4R7U).