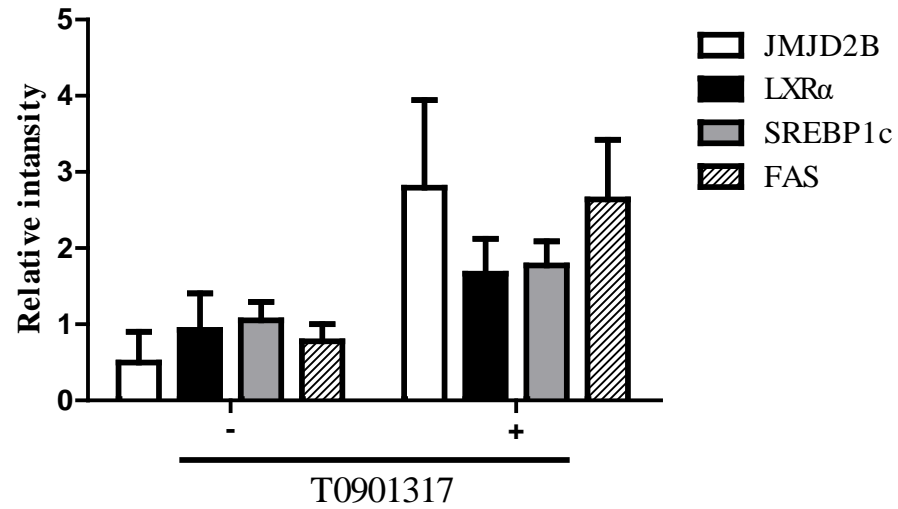
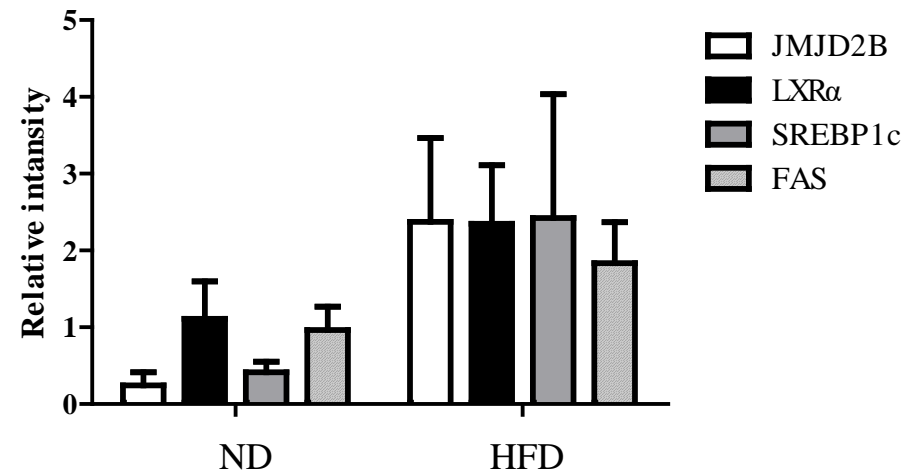


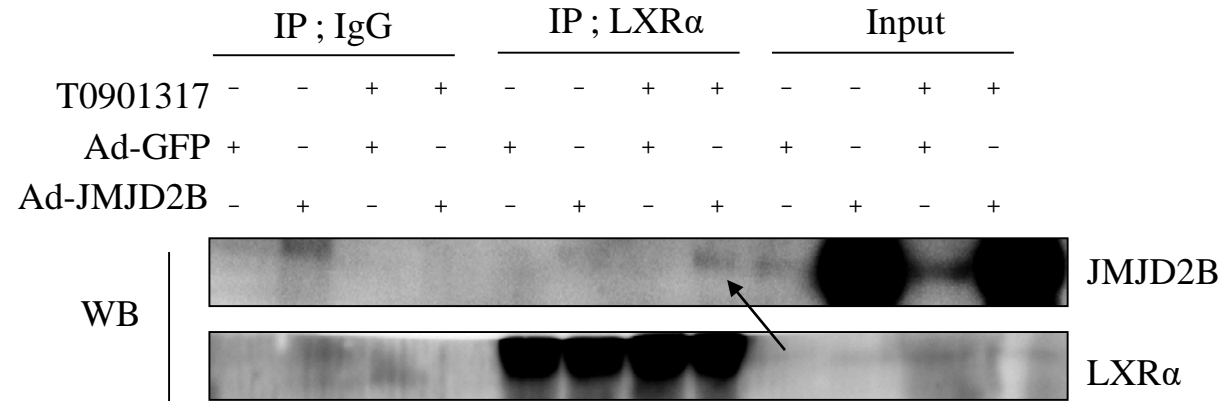
(A)



(B)



Supplementary Fig. S1. The bar graph of band density in figure 1I (A) and 2I (B)



Supplementary Fig. S2. HepG2 cells were infected with Ad-GFP or Ad-JMJD2B and then incubated in the presence or absence of T09013178 for 24 h. Protein extracts were immunoprecipitated with LXR α antibody-agarose beads, and the interaction was detected with immunoblot analysis using JMJD2B antibody. Arrow indicates JMJD2B band detected in LXR α antibody-mediated immunoprecipitants.

Supplementary Table S1. Primer sequences used for real-time PCR

Species	Gene	Sequence (5' → 3')
Human	JMJD2B	F: GGCCGGAGCTGCACACT R: CGCGTCTTTGCACAGAGTAAGA
	LXR α	F: GTCCTTTTCTGACCGGCTT R: TGAATTCCACTTGCAGCCCT
	SREBP1c	F: CGG AGCCATGGATTGCACT R: TAGGCCAGGGAAGTCACTG
	FAS	F: TCGTGGGCTACAGCATGGT R: GCCCTCTGAAGTCGAAGAAGAA
	ACC	F: CTGTAGAAACCCGGACAGTAGAAC R : GGTCAGCATAACATCTCCATGTG
	SCD1	F: CACCACATTCTTCATTGATTGCA R: ATGGCGGCCTTGGAGACT
	18S	F: CGGCTACCACATCCAAGGAA R: GCTGGAATTACCGCGGCT
Mouse	JMJD2B	F: GGCCAAGATCATTCCACCCA R: CCCACAGTCATGGCCTTCTT
	LXR α	F: ATCGCCTTGCTGAAGACCTCTG R: GATGGGGTTGATGAACTCCACC
	SREBP1c	F: TGGATTGCACATTTGAAGACAT R: GCCAGAGAAGCAGAAGAG
	FAS	F: AGG TGG TGA TAG CCG GTA TGT R: TGG GTA ATC CAT AGA GCC CAG
	ACC	F: TGACAGACTGATCGCAGAGAAAG R: TGGAGAGCCCCACACACA
	SCD1	F: CCGGAGACCCCTTAGATCGA R: TAGCCTGTAAAAGATTTCTGCAAACC
	18S	F: CGGCTACCACATCCAAGGAA R: CGGCTACCACATCCAAGGAA