

Different sensitivity of macrophages to phospholipidosis induction by amphiphilic cationic drugs

Kristin Öhlinger¹, Markus Absenger-Novak¹, Claudia Meindl¹, Jennifer Ober¹, Eleonore Fröhlich^{1,2,*}

¹ Medical University of Graz, Center for Medical Research, Stiftingtalstr. 24, 8010 Graz, Austria; Kristin.oehlinger@medunigraz.at; Markus.absenger@medunigraz.at; Claudia.meindl@klinikum-graz.at; Jennifer.ober@medunigraz.at; Eleonore.froehlich@medunigraz.at

² Research Center Pharmaceutical Engineering GmbH, Inffeldgasse 13, Graz, Austria

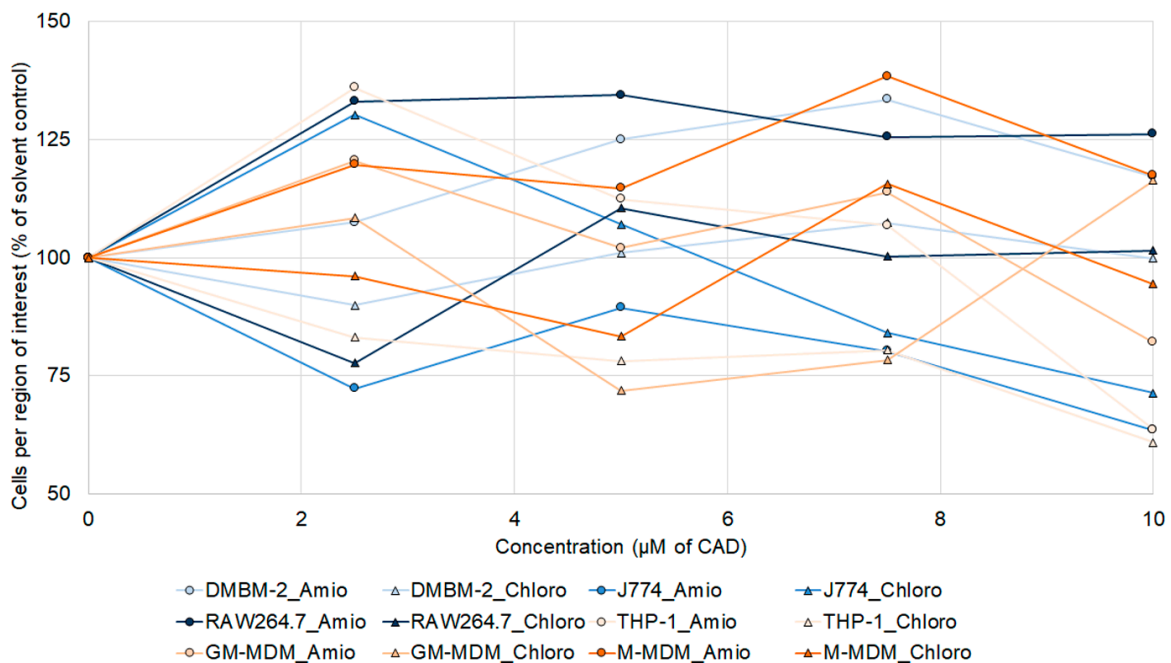


Fig. S1: Dose-dependent changes in cell density. Means (but without indication of standard deviations to increase clarity) of different areas in the culture wells are shown.

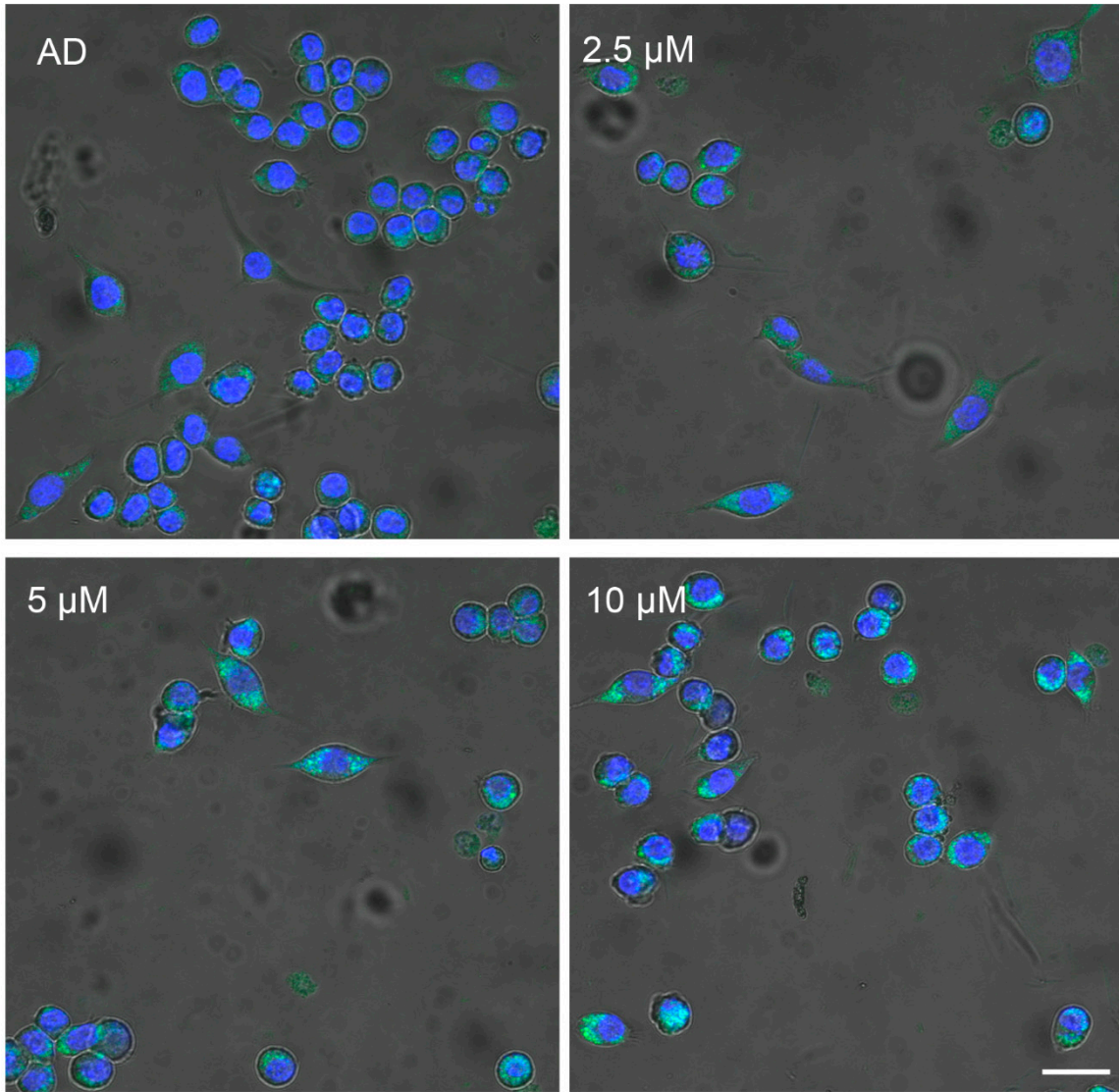


Fig. S2: RAW264.7 cells exposed to solvent control distilled water (AD) and 2.5-10 μM Chloroquine and stained with LysoSensor dye. Scale bar 25 μm .

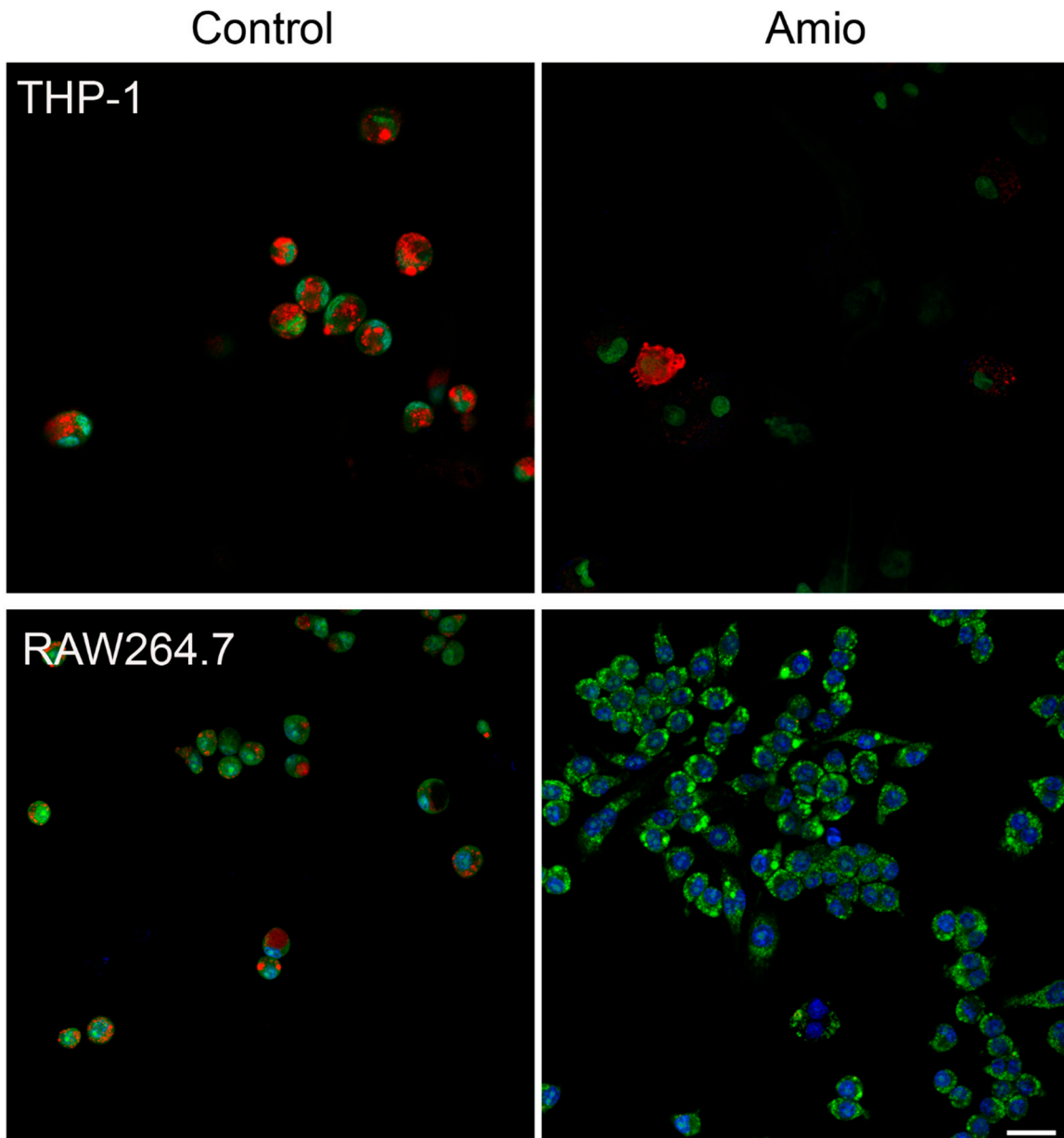


Fig. S3: THP-1 and RAW264.7 macrophages exposed to solvent control DMSO and 7.5 μ M amiodarone (Amio) and stained with Acridine Orange dye. Scale bar: 25 μ m.

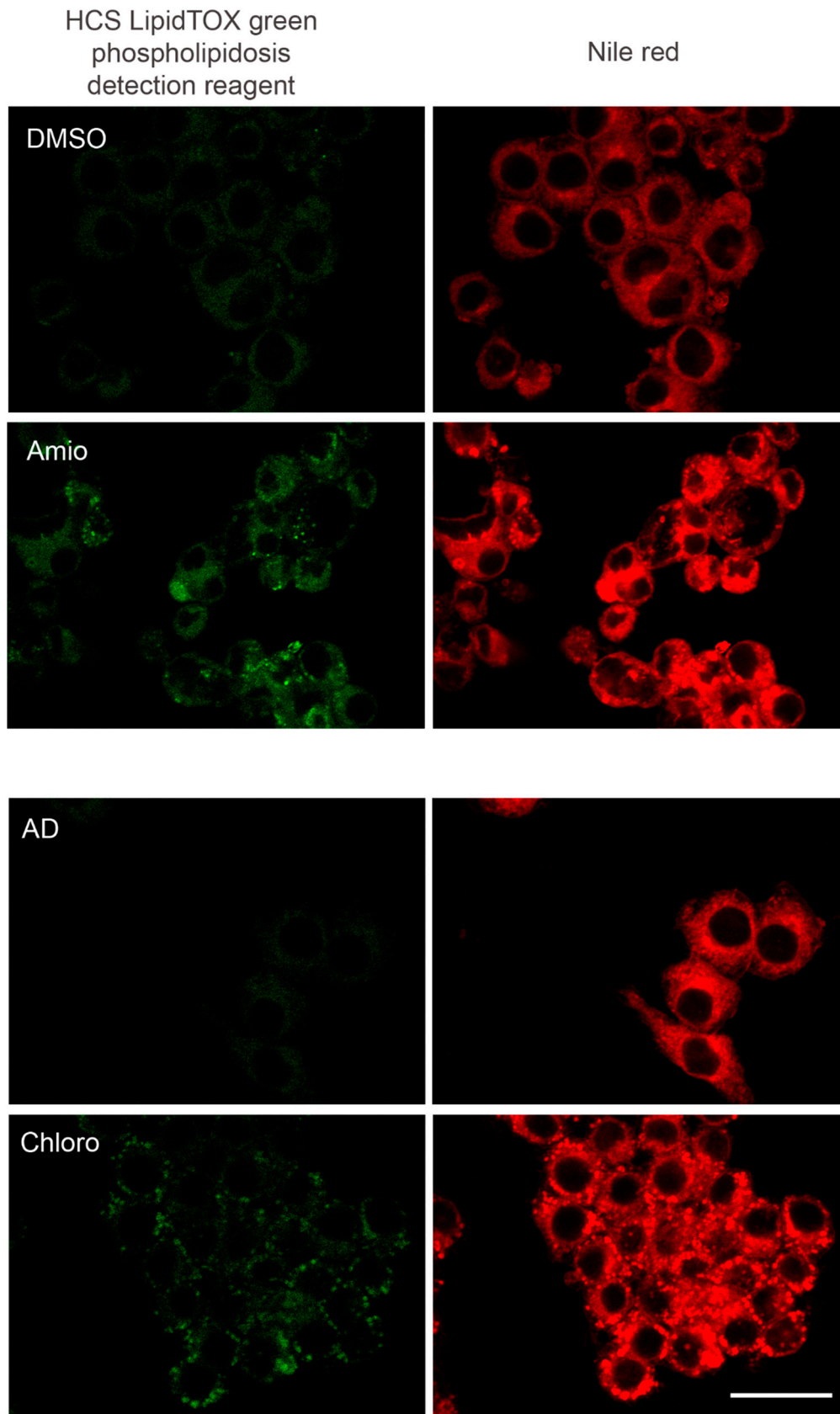


Fig. S4: Co-staining of RAW264.7 cells exposed to solvent (DMSO or AD) and Cads amiodarone (Amio) or chloroquine (Chloro) with HCS green phospholipidosis detection reagent and Nile red. Scale bar: 50 μ m.

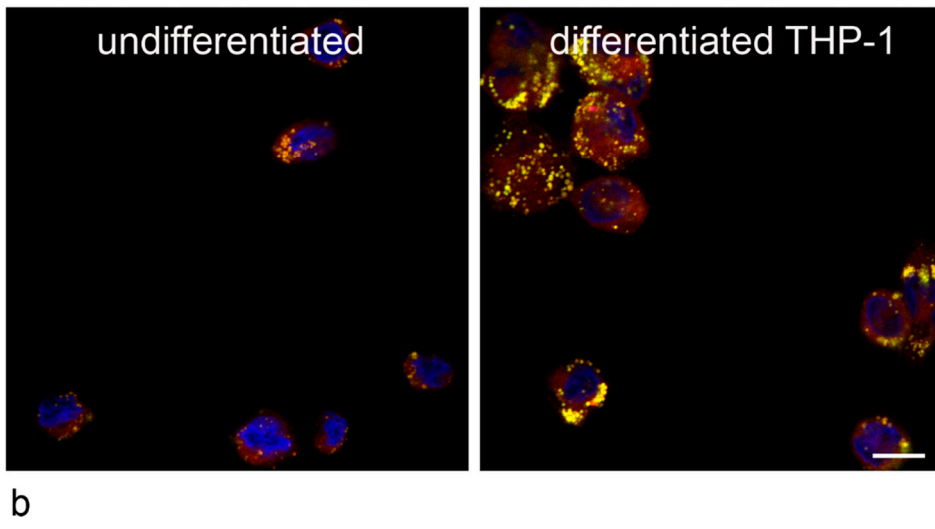
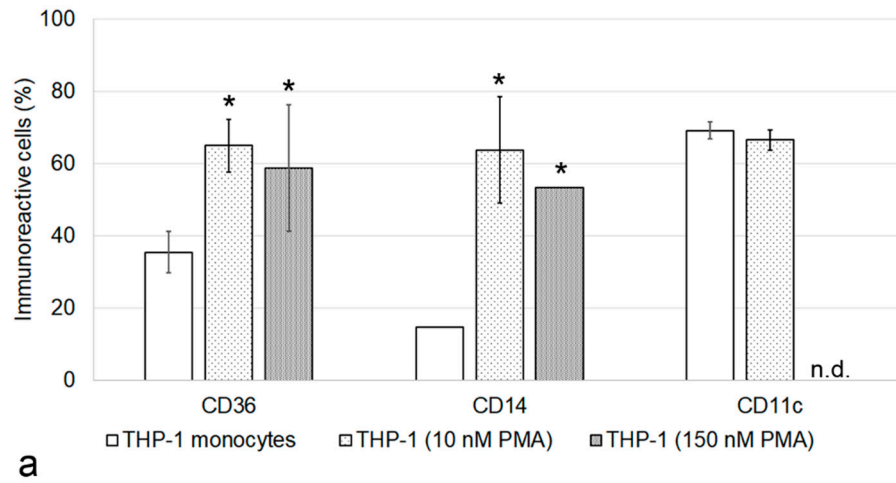


Fig. S5: Changes in CD marker expression of viable cells (a) and of (neutral and phospholipid) lipid accumulation (b) upon differentiation of THP-1 monocytes to macrophages. Scale bar: 20 μ m. Abbreviation: n.d., not determined. Differences between THP-1 monocytes and macrophages are indicated by asterisk (n=3).