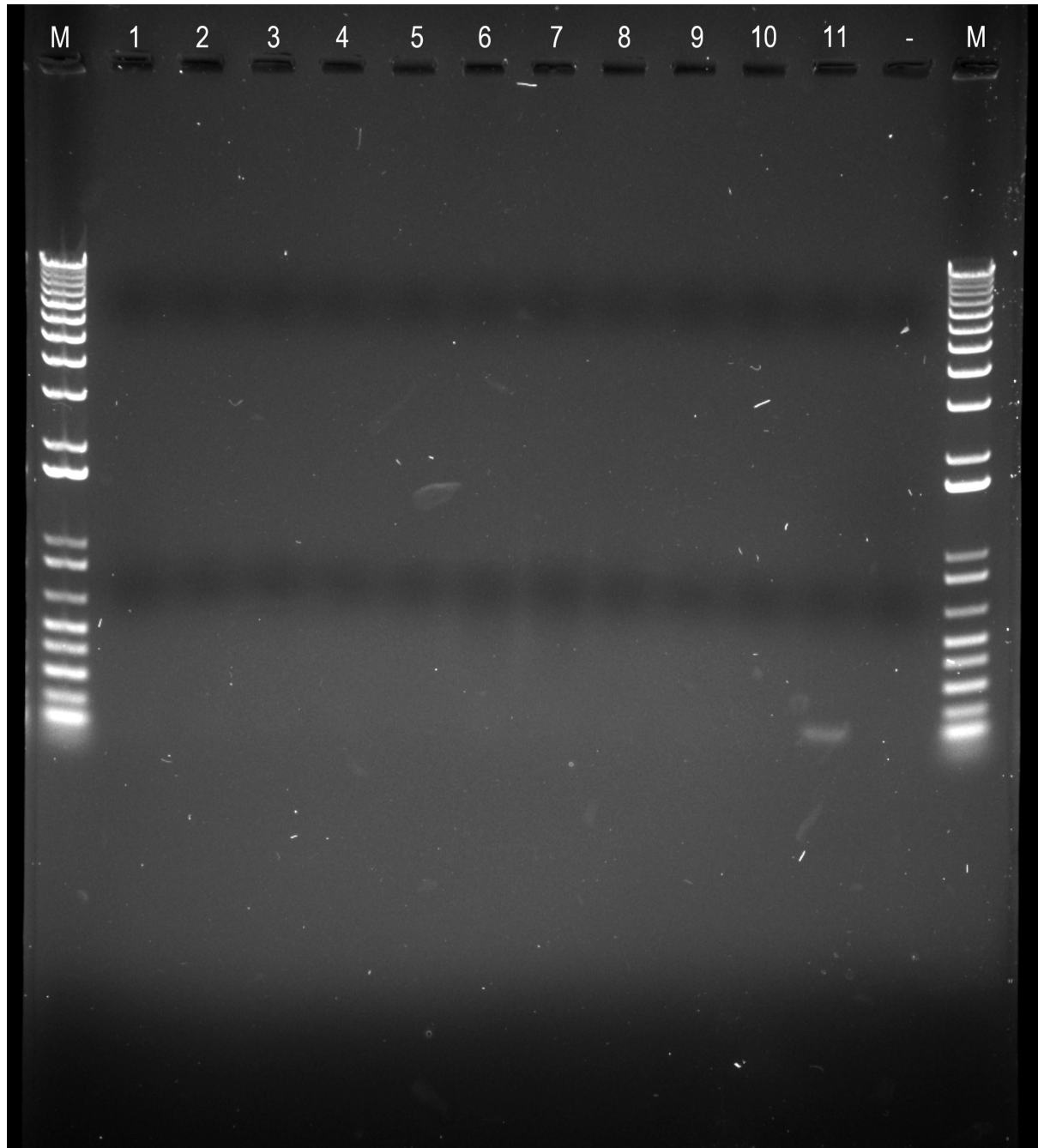
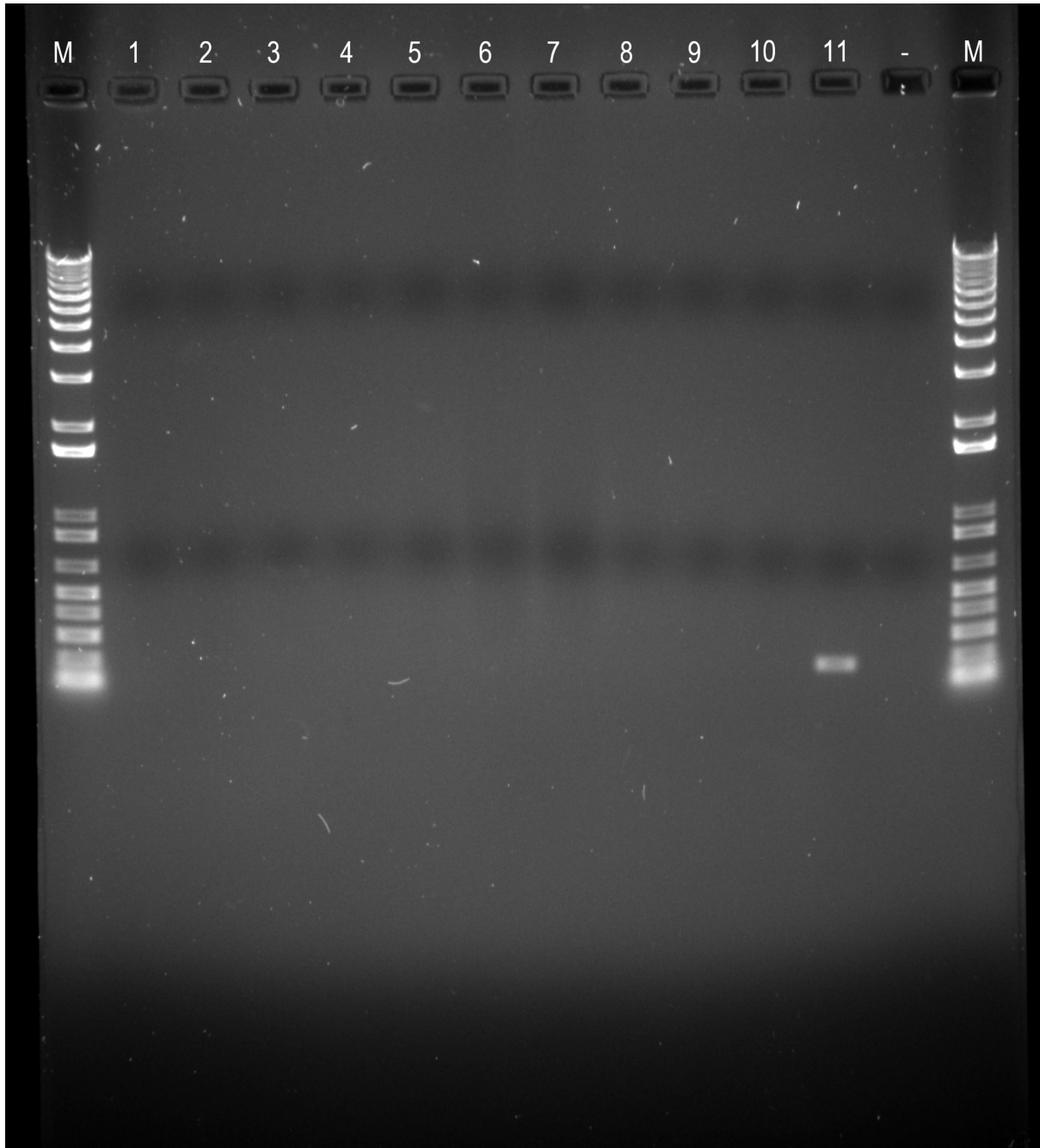


Fig 1 original gel images

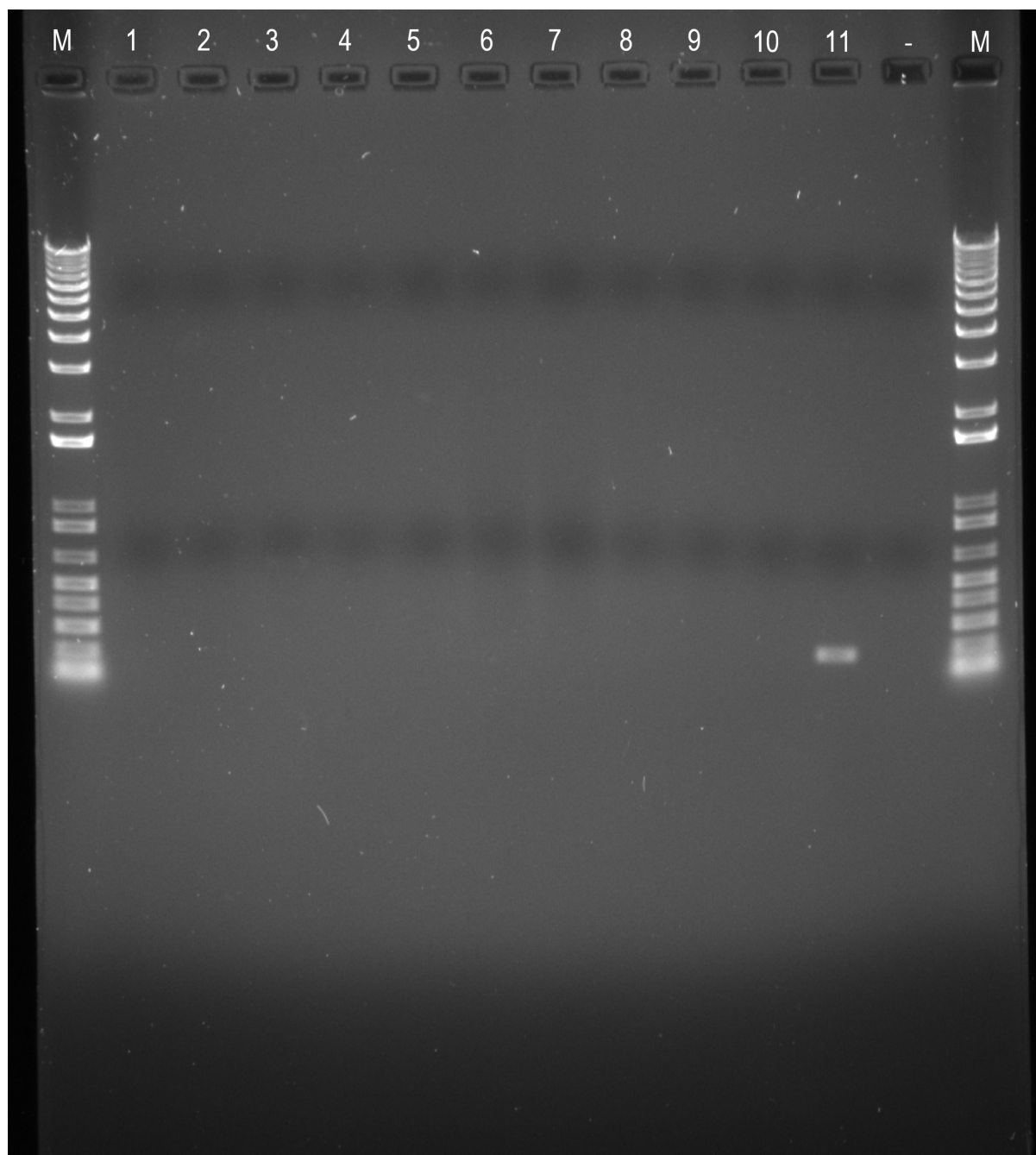
actin. M = 1kb Plus DNA Ladder (InvitrogenTM, Thermo Fisher Scientific, MA, USA). Amplification using gDNA template from (1) *Botryosphaeria* sp., (2) *Cladosporium* sp., (3) *Colletotrichum acutatum*, (4) *Colletotrichum gloeosporioides*, (5) *Neofabraea alba*, (6) *Neofabraea malicortis*, (7) *Neofabraea perennans*, (8) *Venturia inaequalis* 1639, (9) *Venturia inaequalis* MNH120, (10) *Venturia inaequalis* EUB04, (11) *N. ditissima* RS324p as a positive control and (-) non-template negative control.



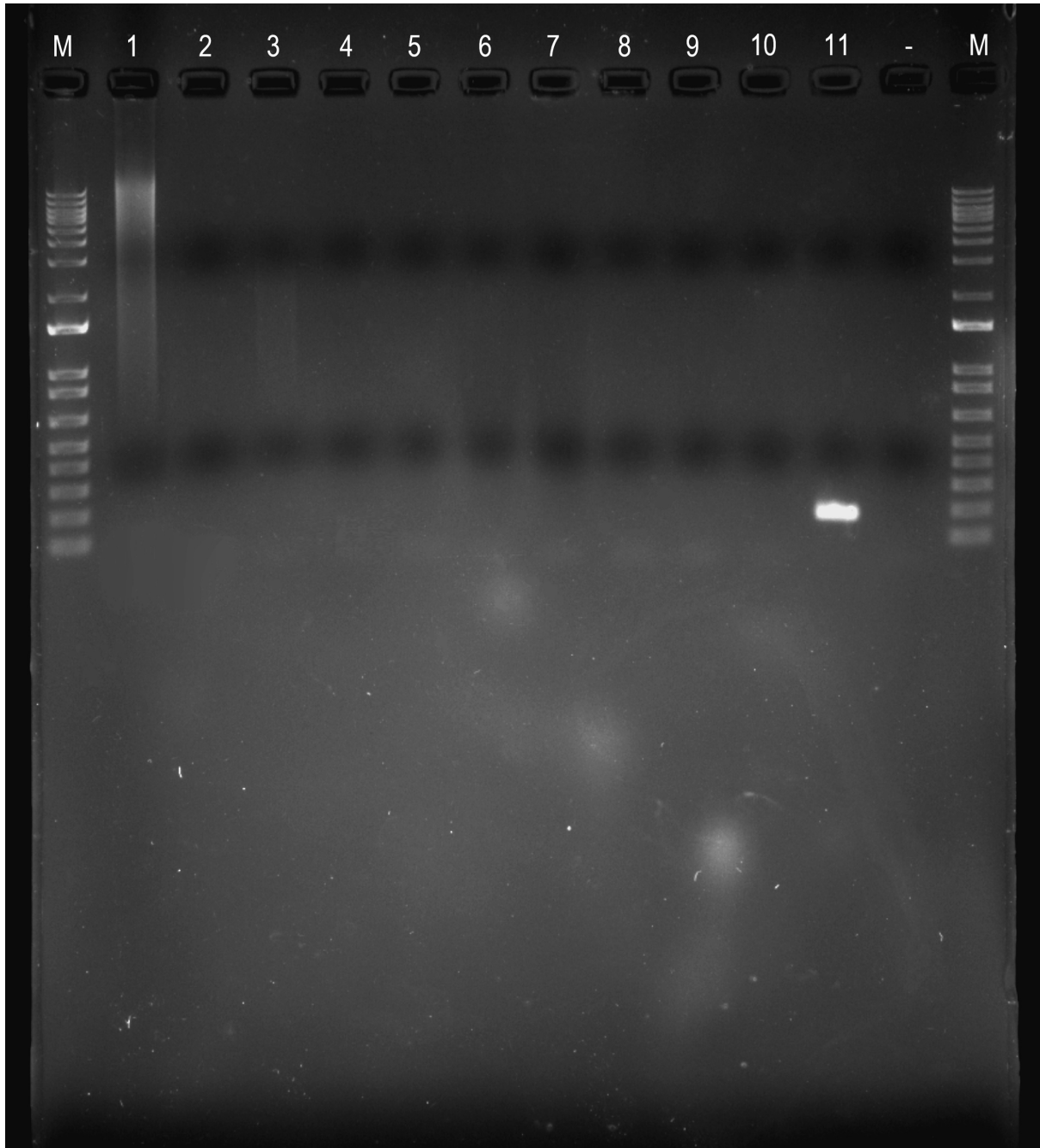
gapdh. M = 1kb Plus DNA Ladder (Invitrogen™, Thermo Fisher Scientific, MA, USA). Amplification using gDNA template from (1) *Botryosphaeria* sp., (2) *Cladosporium* sp., (3) *Colletotrichum acutatum*, (4) *Colletotrichum gloeosporioides*, (5) *Neofabraea alba*, (6) *Neofabraea malicortis*, (7) *Neofabraea perennans*, (8) *Venturia inaequalis* 1639, (9) *Venturia inaequalis* MNH120, (10) *Venturia inaequalis* EUB04, (11) *N. ditissima* RS324p as a positive control and (-) non-template negative control.



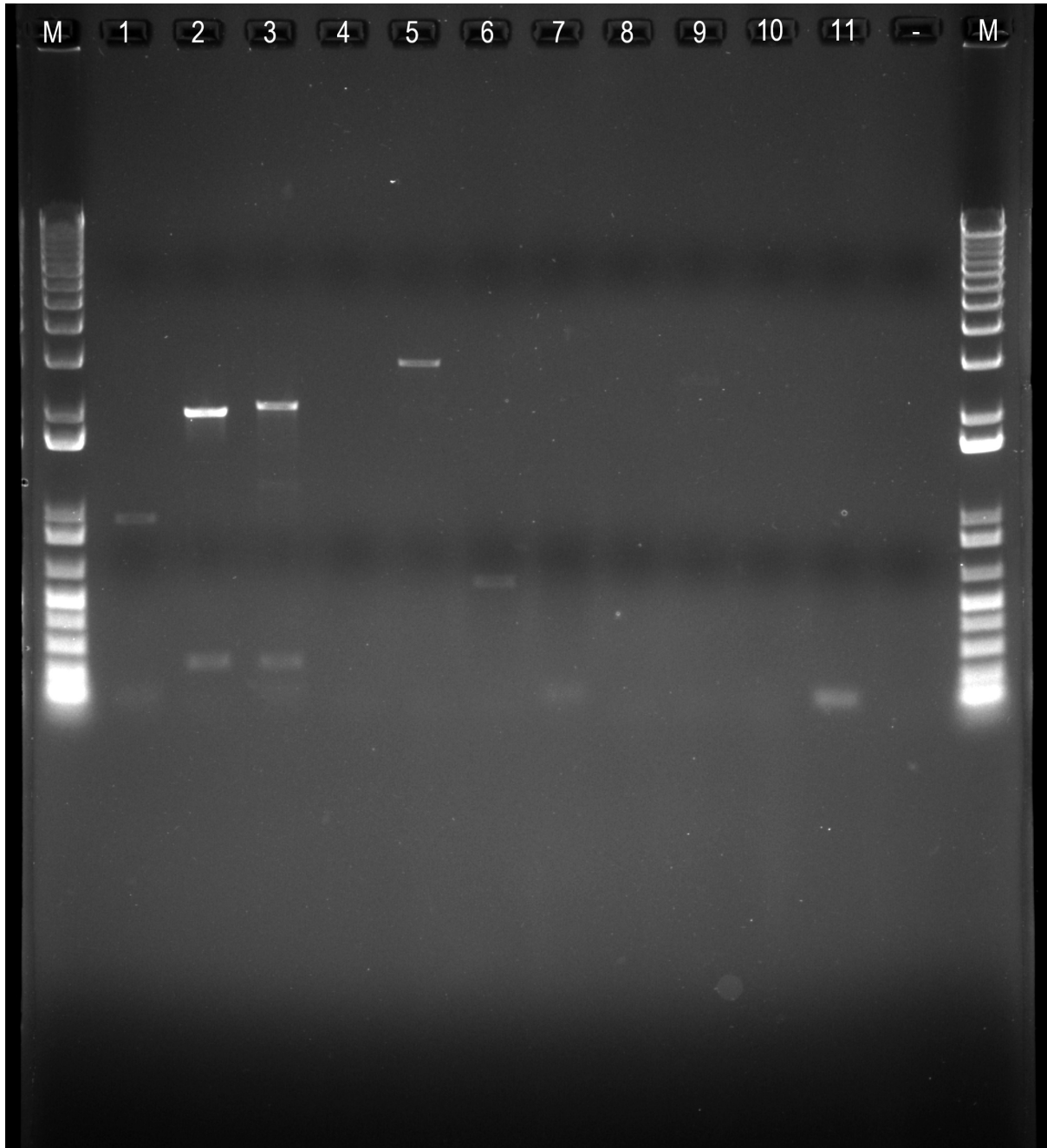
S8. M = 1kb Plus DNA Ladder (Invitrogen™, Thermo Fisher Scientific, MA, USA). Amplification using gDNA template from (1) *Botryosphaeria* sp., (2) *Cladosporium* sp., (3) *Colletotrichum acutatum*, (4) *Colletotrichum gloeosporioides*, (5) *Neofabraea alba*, (6) *Neofabraea malicortis*, (7) *Neofabraea perennans*, (8) *Venturia inaequalis* 1639, (9) *Venturia inaequalis* MNH120, (10) *Venturia inaequalis* EUB04, (11) *N. ditissima* RS324p as a positive control and (-) non-template negative control.



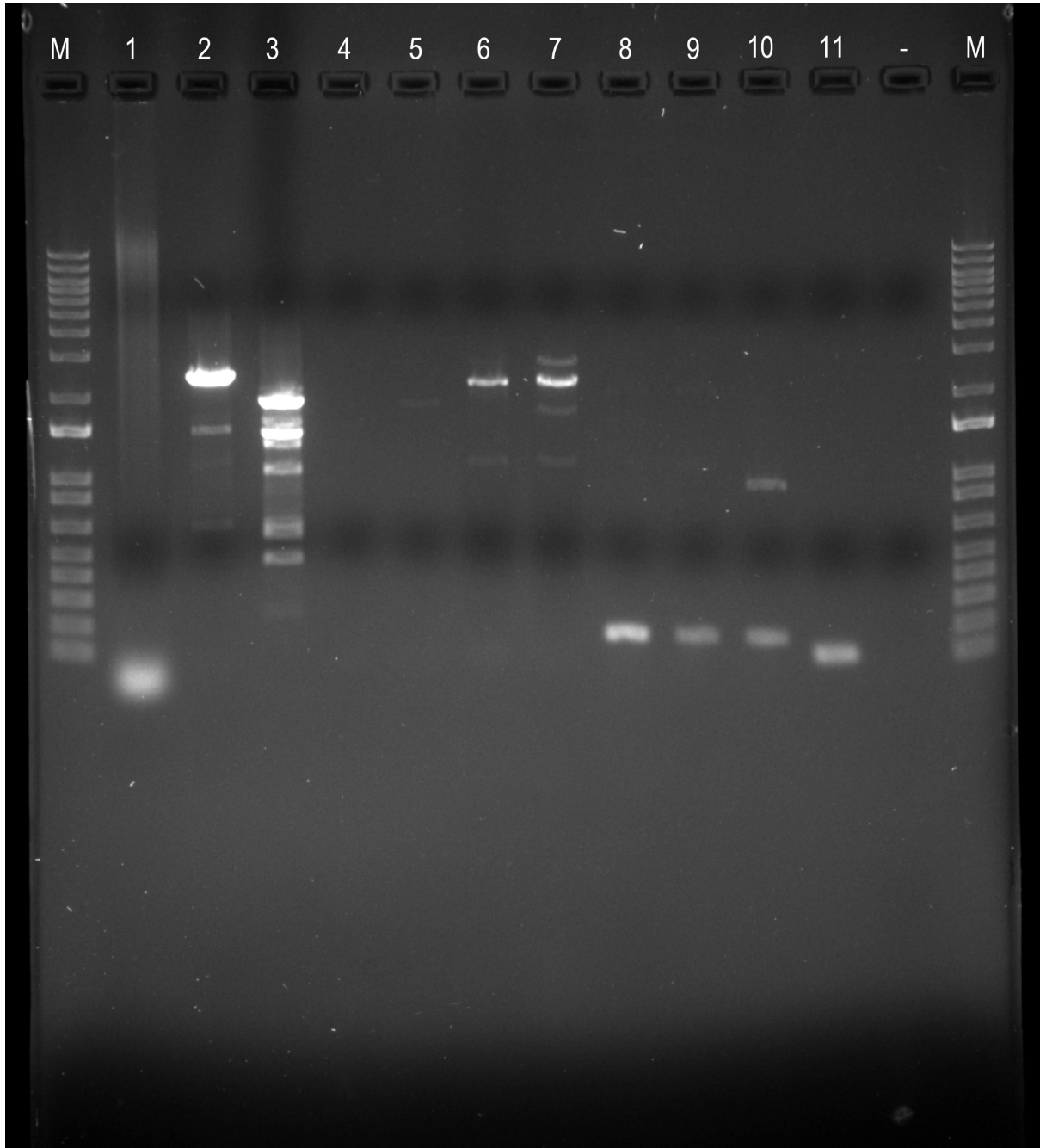
18sAMT. M = 1kb Plus DNA Ladder (Invitrogen™, Thermo Fisher Scientific, MA, USA). Amplification using gDNA template from (1) *Botryosphaeria* sp., (2) *Cladosporium* sp., (3) *Colletotrichum acutatum*, (4) *Colletotrichum gloeosporioides*, (5) *Neofabraea alba*, (6) *Neofabraea malicortis*, (7) *Neofabraea perennans*, (8) *Venturia inaequalis* 1639, (9) *Venturia inaequalis* MNH120, (10) *Venturia inaequalis* EUB04, (11) *N. ditissima* RS324p as a positive control and (-) non-template negative control.



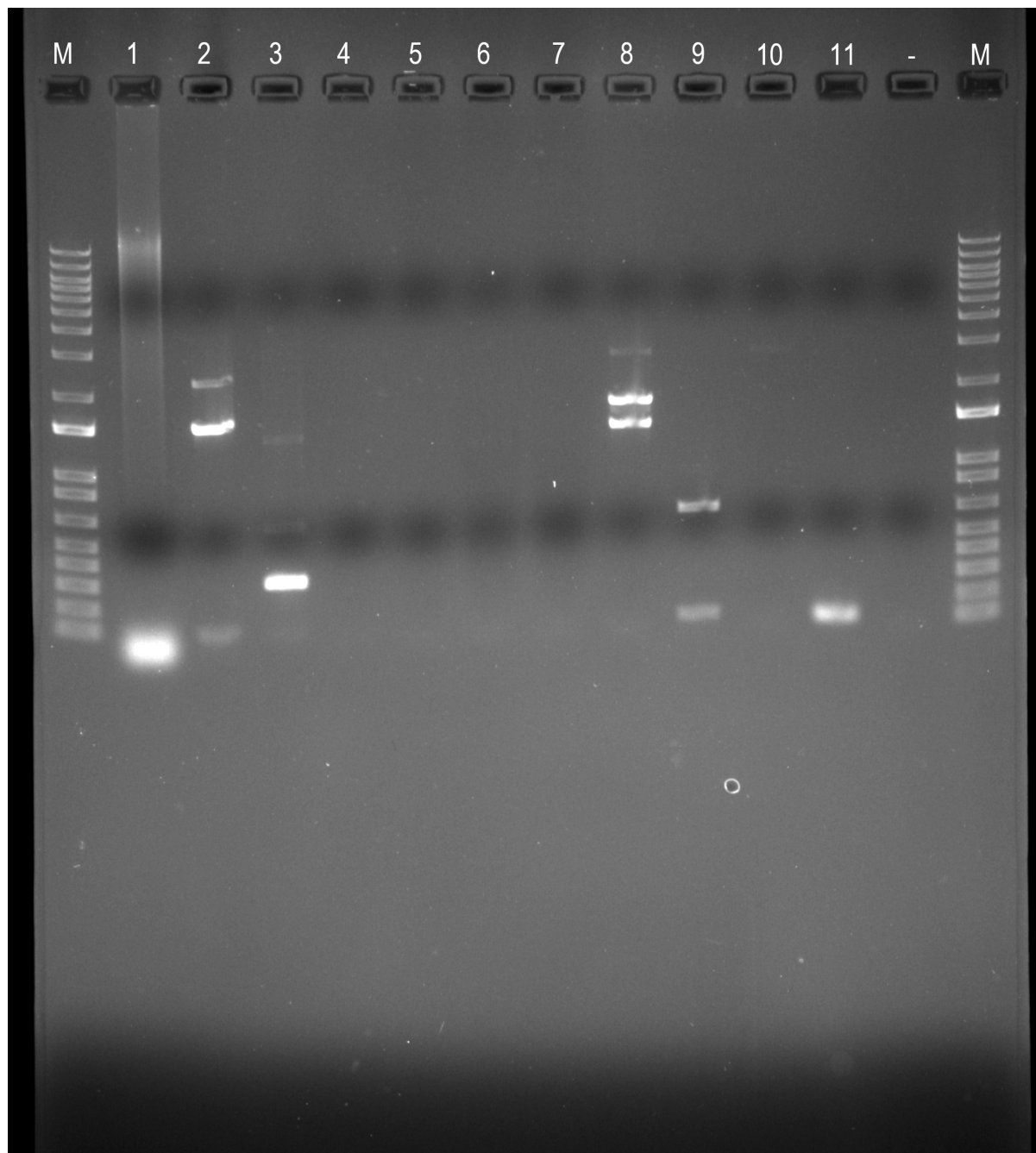
Btub. M = 1kb Plus DNA Ladder (Invitrogen™, Thermo Fisher Scientific, MA, USA). Amplification using gDNA template from (1) *Botryosphaeria* sp., (2) *Cladosporium* sp., (3) *Colletotrichum acutatum*, (4) *Colletotrichum gloeosporioides*, (5) *Neofabraea alba*, (6) *Neofabraea malicortis*, (7) *Neofabraea perennans*, (8) *Venturia inaequalis* 1639, (9) *Venturia inaequalis* MNH120, (10) *Venturia inaequalis* EUB04, (11) *N. ditissima* RS324p as a positive control and (-) non-template negative control.



Eftu. M = 1kb Plus DNA Ladder (Invitrogen™, Thermo Fisher Scientific, MA, USA). Amplification using gDNA template from (1) *Botryosphaeria* sp., (2) *Cladosporium* sp., (3) *Colletotrichum acutatum*, (4) *Colletotrichum gloeosporioides*, (5) *Neofabraea alba*, (6) *Neofabraea malicortis*, (7) *Neofabraea perennans*, (8) *Venturia inaequalis* 1639, (9) *Venturia inaequalis* MNH120, (10) *Venturia inaequalis* EUB04, (11) *N. ditissima* RS324p as a positive control and (-) non-template negative control.



E2. M = 1kb Plus DNA Ladder (Invitrogen™, Thermo Fisher Scientific, MA, USA). Amplification using gDNA template from (1) *Botryosphaeria* sp., (2) *Cladosporium* sp., (3) *Colletotrichum acutatum*, (4) *Colletotrichum gloeosporioides*, (5) *Neofabraea alba*, (6) *Neofabraea malicortis*, (7) *Neofabraea perennans*, (8) *Venturia inaequalis* 1639, (9) *Venturia inaequalis* MNH120, (10) *Venturia inaequalis* EUB04, (11) *N. ditissima* RS324p as a positive control and (-) non-template negative control.



S27a. M = 1kb Plus DNA Ladder (Invitrogen™, Thermo Fisher Scientific, MA, USA). Amplification using gDNA template from (1) *Botryosphaeria* sp., (2) *Cladosporium* sp., (3) *Colletotrichum acutatum*, (4) *Colletotrichum gloeosporioides*, (5) *Neofabraea alba*, (6) *Neofabraea malicortis*, (7) *Neofabraea perennans*, (8) *Venturia inaequalis* 1639, (9) *Venturia inaequalis* MNH120, (10) *Venturia inaequalis* EUB04, (11) *N. ditissima* RS324p as a positive control and (-) non-template negative control.

