

SUPPLEMENTARY TABLES AND FIGURES

Supplementary Table S1. Baseline characteristics of study participants included in the present report stratified by RA diagnosis during follow-up.

	Incident RA (no=82)	No incident RA (no=3611)	P value††
Sex, no. men (%)	17 (21)	1086 (30)	0.07
Age, years	48±6	48±6	0.63
BMI, kg/m²	42±5	41±5	0.66
Surgery, no. (%)	43 (52)	1809 (50)	0.68
Diabetes*, no. (%)	7 (9)	557 (16)	0.09
Adiponectin, mg/L	9.0±4.8	7.8±4.5	0.03
CRP, mg/L	10.1±12.5	7.4±7.8	0.005
ESR**, mm/h	18±11	15±11	0.24
Current or former smoking, no. (%)	59 (72)	2310 (64)	0.14
Seropositive, no. (%)†	46 (69)	-	

Baseline characteristics of the study population are shown as mean ± standard deviation or number (%).

Among SOS study participants included in the present report, 10 were missing information about type 2 diabetes at baseline (*) and 77 subjects did not have ESR measured at baseline (**).

† Data were obtained by a review of the ICD codes from the National Patient Register. Subjects who were seronegative at the diagnosis of RA, but then developed later on seropositivity according to the ICD codes, are here classified as seropositive. Fifteen subjects are not included due to unknown status.

†† P values are adjusted for age, sex and BMI.

Abbreviations: BMI, body-mass index; CRP, C-reactive protein; ESR, erythrocyte sedimentation rate.

Supplementary Table S2. Unadjusted HR for the incidence of RA

	HR (95% CI)	P Value
Adiponectin, per 10 mg/L	1.60 (1.09-2.34)	0.02
Surgery vs control group	1.07 (0.69-1.64)	0.77
Men vs women	0.64 (0.38-1.09)	0.10
Age, per 10 years	0.99 (0.69-1.42)	0.96
BMI, per 10 kg/m²	1.24 (0.79-1.94)	0.35
ESR, per 10 mm/h	1.18 (0.99-1.24)	0.06
CRP, per 10 mg/L	1.31 (1.12-1.53)	0.001
Current or former smoking, yes vs no	1.51 (0.93-2.44)	0.09

The unadjusted hazard ratios (HR) were calculated using a Cox proportional hazards models based on baseline data.

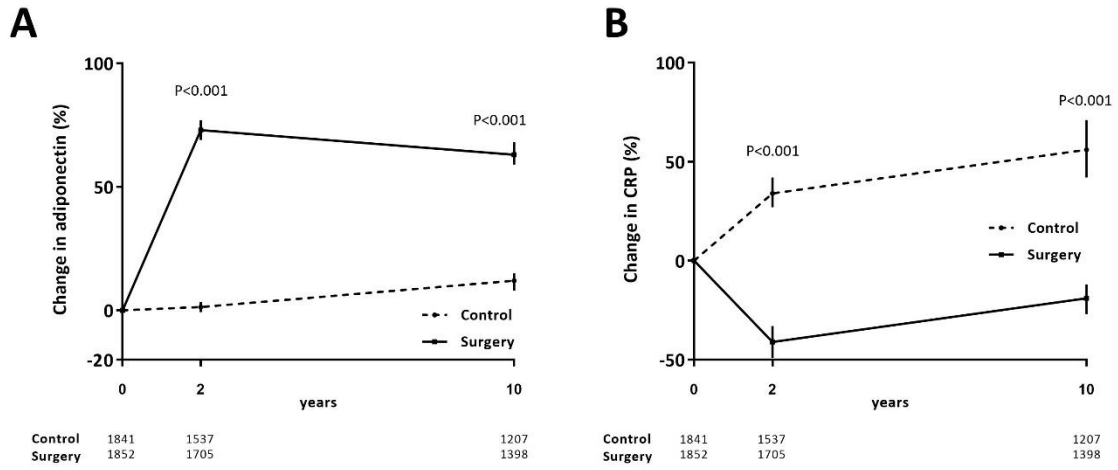
Abbreviations: BMI, body-mass index; CRP, C-reactive protein; ESR, erythrocyte sedimentation rate; CI, confidence interval.

Supplementary Table S3. Stratification of the study population according to adiponectin and CRP levels

	<u>CRP ≤ 5.1 mg/L</u>	<u>CRP > 5.1 mg/L</u>	χ -square P
Adiponectin ≤ 6.8 mg/L, no. (%)	883 (48%)	964 (52%)	0.004
Adiponectin > 6.8 mg/L no. (%)	969 (52%)	877 (48%)	

r=-0.08, as assessed by Spearman test.

Abbreviations: CRP, C-reactive protein.



Supplementary Figure S1. Changes in adiponectin and CRP in the control and surgery group during follow-up.

Serum changes are shown as mean and 95% confidence interval.

Abbreviations: CRP, C-reactive protein.

Supplementary Table S4. Association between 2-year changes in adiponectin or CRP and the incidence of RA

	Control group		Surgery group	
	HR (95% CI)	P value	HR (95% CI)	P value
Adiponectin changes	1.02 (0.99-1.06)	0.23	0.99 (0.95-1.04)	0.64
CRP changes	0.98 (0.94-1.02)	0.37	1.01 (1.00-1.02)	0.04

Abbreviations: CRP, C-reactive protein; HR, hazard ratio; CI, confidence interval.