

LACTATE DEHYDROGENASE LEVEL AS A COVID-19 SEVERITY MARKER

SUPPLEMENTARY DIGITAL CONTENT

CONTENT:

BIBLIOGRAPHY FOR FIGURE 12

LACTATE DEHYDROGENASE LEVEL: ICU VS. NON-ICU PATIENTS.....4

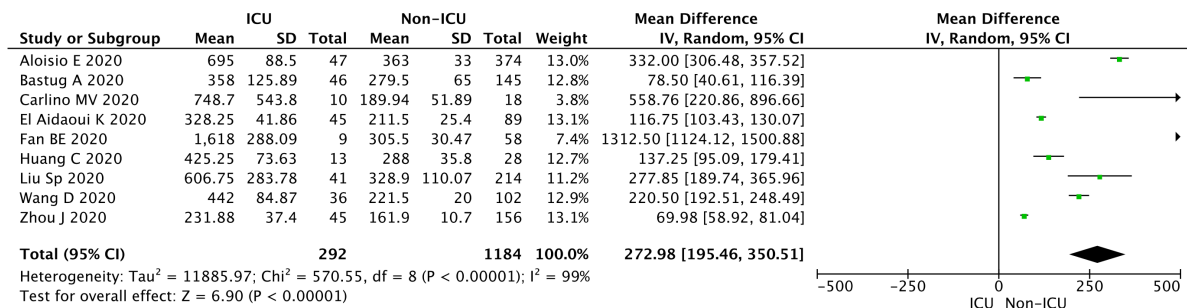
LACTATE DEHYDROGENASE LEVEL: DEATH VS. SURVIVAL PATIENTS.....5

Bibliography for Figure 1

- Chen G, Wu D, Guo W, et al. Clinical and immunological features of severe and moderate coronavirus disease 2019. *J Clin Invest.* 2020 May 1;130(5):2620-2629. doi: 10.1172/JCI137244.
- Chen LD, Zhang ZY, Wei XJ, et al. Association between cytokine profiles and lung injury in COVID-19 pneumonia. *Respir Res.* 2020 Jul 29;21(1):201. doi: 10.1186/s12931-020-01465-2.
- Feng Z, Li J, Yao S, et al. Clinical Factors Associated with Progression and Prolonged Viral Shedding in COVID-19 Patients: A Multicenter Study. *Aging Dis.* 2020; 11(5):1069-1081. doi: 10.14336/AD.2020.0630.
- Güner R, Hasanoğlu I, Kayaaslan B, et al. COVID-19 experience of the major pandemic response center in the capital: Results of the pandemic's first month in Turkey. *Turk J Med Sci.* 2020 Jul 19. doi: 10.3906/sag-2006-164.
- Han Y, Zhang H, Mu S, et al. Lactate dehydrogenase, an independent risk factor of severe COVID-19 patients: a retrospective and observational study. *Aging (Albany NY).* 2020; 12(12):11245-11258. doi: 10.18632/aging.103372.
- Hu J, Zhou J, Dong F, et al. Combination of serum lactate dehydrogenase and sex is predictive of severe disease in patients with COVID-19. *Medicine (Baltimore).* 2020 Oct 16;99(42):e22774. doi: 10.1097/MD.00000000000022774.
- Huang H, Song B, Xu Z, et al. Predictors of coronavirus disease 2019 severity: A retrospective study of 64 cases. *Jpn J Infect Dis.* 2020 Aug 1. doi: 10.7883/yoken.JJID.2020.298.
- Huang R, Zhu L, Xue L, et al. Clinical findings of patients with coronavirus disease 2019 in Jiangsu province, China: A retrospective, multi-center study. *PLoS Negl Trop Dis.* 2020 May 8;14(5):e0008280. doi: 10.1371/journal.pntd.0008280.
- Itelman E, Wasserstrum Y, Segev A, et al. Clinical Characterization of 162 COVID-19 patients in Israel: Preliminary Report from a Large Tertiary Center. *Isr Med Assoc J.* 2020; 22(5):271-274.
- Lee JY, Hong SW, Hyun M, et al. Epidemiological and clinical characteristics of coronavirus disease 2019 in Daegu, South Korea. *Int J Infect Dis.* 2020 Sep;98:462-466. doi: 10.1016/j.ijid.2020.07.017.
- Li Q, Zhang J, Ling Y, et al. A simple algorithm helps early identification of SARS-CoV-2 infection patients with severe progression tendency. *Infection.* 2020; 48(4):577-584. doi: 10.1007/s15010-020-01446-z.
- Li Q, Cao Y, Chen L, et al. Hematological features of persons with COVID-19. *Leukemia.* 2020; 34(8):2163-2172. doi: 10.1038/s41375-020-0910-1.
- Liu J, Li S, Liu J, et al. Longitudinal characteristics of lymphocyte responses and cytokine profiles in the peripheral blood of SARS-CoV-2 infected patients. *EBioMedicine.* 2020; 55:102763. doi: 10.1016/j.ebiom.2020.102763.
- Liu J, Liu Z, Jiang W, et al. Clinical predictors of COVID-19 disease progression and death: Analysis of 214 hospitalised patients from Wuhan, China. *Clin Respir J.* 2020 Oct 22. doi: 10.1111/crj.13296.
- Lu Y, Sun K, Guo S, et al. Early Warning Indicators of Severe COVID-19: A Single-Center Study of Cases From Shanghai, China. *Front Med (Lausanne).* 2020 Jul 17;7:432. doi: 10.3389/fmed.2020.00432.

- Popov GT, Baymakova M, Vaseva V, Kundurzhiev T, Mutafchiyski V. Clinical Characteristics of Hospitalized Patients with COVID-19 in Sofia, Bulgaria. *Vector Borne Zoonotic Dis.* 2020 Oct 14. doi: 10.1089/vbz.2020.2679.
- Schalekamp S, Huisman M, van Dijk RA, et al. Model-based Prediction of Critical Illness in Hospitalized Patients with COVID-19. *Radiology.* 2020 Aug 13;202723. doi: 10.1148/radiol.2020202723.
- Shang W, Dong J, Ren Y, et al. The value of clinical parameters in predicting the severity of COVID-19. *J Med Virol.* 2020 May 21;10.1002/jmv.26031. doi: 10.1002/jmv.26031.
- Sun Y, Dong Y, Wang L, et al. Characteristics and prognostic factors of disease severity in patients with COVID-19: The Beijing experience. *J Autoimmun.* 2020 Aug;112:102473. doi: 10.1016/j.jaut.2020.102473.
- Wan S, Xiang Y, Fang W, et al. Clinical features and treatment of COVID-19 patients in northeast Chongqing. *J Med Virol.* 2020; 92(7):797-806. doi: 10.1002/jmv.25783.
- Wang F, Hou H, Luo Y, et al. The laboratory tests and host immunity of COVID-19 patients with different severity of illness. *JCI Insight.* 2020 May 21;5(10):e137799. doi: 10.1172/jci.insight.137799.
- Xie L, You Q, Wu C, et al. Impact of Cardiovascular Disease on Clinical Characteristics and Outcomes of Coronavirus Disease 2019 (COVID-19). *Circ J.* 2020; 84(8):1277-1283. doi: 10.1253/circj.CJ-20-0348.
- Xu Y, Li R, Zeng Q, et al. Clinical Characteristics of SARS-CoV-2 Pneumonia Compared to Controls in Chinese Han Population. *medRxiv* 2020. Doi: 10.1101/2020.03.08.20031658.
- Xue G, Gan X, Wu Z, et al. Novel serological biomarkers for inflammation in predicting disease severity in patients with COVID-19. *Int Immunopharmacol.* 2020 Oct 3;89(Pt A):107065. doi: 10.1016/j.intimp.2020.107065.
- Zeng Z, Yu H, Chen H, et al. Longitudinal changes of inflammatory parameters and their correlation with disease severity and outcomes in patients with COVID-19 from Wuhan, China. *Crit Care.* 2020; 24(1):525. doi: 10.1186/s13054-020-03255-0.
- Zhao K, Huang J, Dai D, et al. Serum Iron Level as a Potential Predictor of Coronavirus Disease 2019 Severity and Mortality: A Retrospective Study. *Open Forum Infect Dis.* 2020 Jun 21;7(7):ofaa250. doi: 10.1093/ofid/ofaa250.
- Zheng F, Tang W, Li H, Huang YX, Xie YL, Zgou ZG. Clinical characteristics of 161 cases of corona virus disease 2019 (COVID-19) in Changsha. *Eur Rev Med Pharmacol Sci.* 2020; 24(6):3404-3410. doi: 10.26355/eurrev_202003_20711.

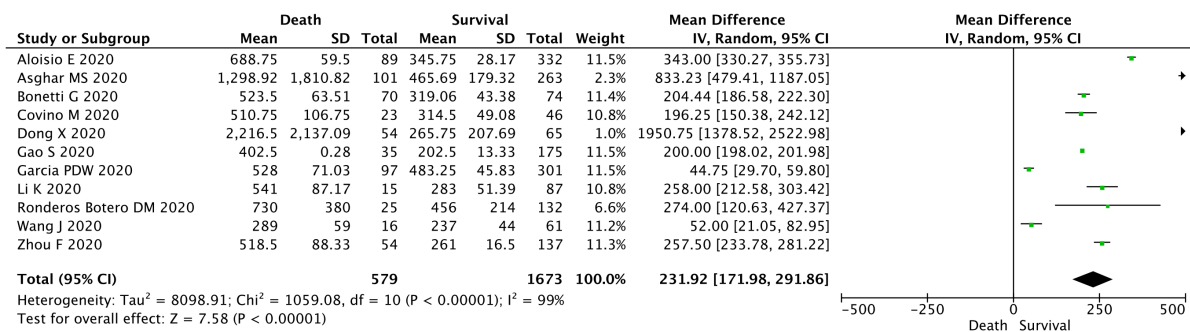
Lactate dehydrogenase level: ICU vs. Non-ICU patients



References:

- Aloisio E, Chibireva M, Serafini L, et al. A comprehensive appraisal of laboratory biochemistry tests as major predictors of COVID-19 severity. *Arch Pathol Lab Med*. 2020 Jul 10. doi: 10.5858/arpa.2020-0389-SA.
- Bastug A, Bodur H, Erdogan S, et al. Clinical and laboratory features of COVID-19: Predictors of severe prognosis. *Int Immunopharmacol*. 2020 Nov;88:106950. doi: 10.1016/j.intimp.2020.106950.
- Carlino MV, Valenti N, Cesaro F, et al. Predictors of Intensive Care Unit admission in patients with coronavirus disease 2019 (COVID-19). *Monaldi Arch Chest Dis*. 2020 Jul 15;90(3). doi: 10.4081/monaldi.2020.1410.
- El Aidaoui K, Haoudar A, Khalis M, et al. Predictors of Severity in Covid-19 Patients in Casablanca, Morocco. *Cureus*. 2020 Sep 29;12(9):e10716. doi: 10.7759/cureus.10716.
- Fan BE, Chong VCL, Chan SSW, et al. Hematologic parameters in patients with COVID-19 infection. *Am J Hematol*. 2020; 95(6):E131-E134. doi: 10.1002/ajh.25774.
- Huang C, Wang Y, Li X, et al. Clinical features of patients infected with 2019 novel coronavirus in Wuhan, China. *Lancet*. 2020; 395(10223):497-506. doi: 10.1016/S0140-6736(20)30183-5.
- Liu SP, Zhang Q, Wang W, et al. Hyperglycemia is a strong predictor of poor prognosis in COVID-19. *Diabetes Res Clin Pract*. 2020 Sep;167:108338. doi: 10.1016/j.diabres.2020.108338.
- Wang D, Hu B, Hu C, et al. Clinical Characteristics of 138 Hospitalized Patients With 2019 Novel Coronavirus-Infected Pneumonia in Wuhan, China. *JAMA*. 2020; 323(11):1061-1069. doi: 10.1001/jama.2020.1585.
- Zhou J, Sun J, Cao Z, et al. Epidemiological and clinical features of 201 COVID-19 patients in Changsha city, Hunan, China. *Medicine (Baltimore)*. 2020; 99(34):e21824. doi: 10.1097/MD.00000000000021824.

Lactate dehydrogenase level: death vs. survival patients



References:

- Aloisio E, Chibireva M, Serafini L, et al. A comprehensive appraisal of laboratory biochemistry tests as major predictors of COVID-19 severity. Arch Pathol Lab Med. 2020 Jul 10. doi: 10.5858/arpa.2020-0389-SA.
- Asghar MS, Kazmi SJH, Khan NA, et al. Poor Prognostic Biochemical Markers Predicting Fatalities Caused by COVID-19: A Retrospective Observational Study From a Developing Country. Cureus. 2020; 12(8):e9575. doi: 10.7759/cureus.9575.
- Bonetti G, Manelli F, Patroni A, et al. Laboratory predictors of death from coronavirus disease 2019 (COVID-19) in the area of Valcamonica, Italy. Clin Chem Lab Med. 2020; 58(7):1100-1105. doi: 10.1515/cclm-2020-0459.
- Covino M, De Matteis G, Santoro M, et al. Clinical characteristics and prognostic factors in COVID-19 patients aged ≥80 years. Geriatr Gerontol Int. 2020; 20(7):704-708. doi: 10.1111/ggi.13960.
- Dong X, Sun L, Li Y. Prognostic value of lactate dehydrogenase for in-hospital mortality in severe and critically ill patients with COVID-19. Int J Med Sci. 2020; 17(14):2225-2231. doi: 10.7150/ijms.47604.
- Gao S, Jiang F, Jin W, et al. Risk factors influencing the prognosis of elderly patients infected with COVID-19: a clinical retrospective study in Wuhan, China. Aging (Albany NY). 2020; 12(13):12504-12516. doi: 10.18632/aging.103631.
- Garcia PDW, Fumeaux T, Guerci P, et al. Prognostic factors associated with mortality risk and disease progression in 639 critically ill patients with COVID-19 in Europe: Initial report of the international RISC-19-ICU prospective observational cohort. EClinicalMedicine. 2020; 25:100449. doi: 10.1016/j.eclinm.2020.100449.
- Li K, Chen D, Chen S, et al. Predictors of fatality including radiographic findings in adults with COVID-19. Respir Res. 2020 Jun 11;21(1):146. doi: 10.1186/s12931-020-01411-2.
- Ronderos Botero DM, Omar AMS, Sun HK, et al. COVID-19 in the Healthy Patient Population. zhouDemographic and Clinical Phenotypic Characterization and Predictors of In-Hospital Outcomes. Arterioscler Thromb Vasc Biol. 2020; 40(11):2764-2775. doi: 10.1161/ATVBAHA.120.314845.
- Wang J, Yu H, Hua Q, et al. A descriptive study of random forest algorithm for predicting COVID-19 patients outcome. PeerJ. 2020; 8: e9945. doi: 10.7717/peerj.9945
- Zhou F, Yu T, Du R, et al. Clinical course and risk factors for mortality of adult inpatients with COVID-19 in Wuhan, China: a retrospective cohort study. Lancet. 2020; 395(10229):1054-1062. doi: 10.1016/S0140-6736(20)30566-3.