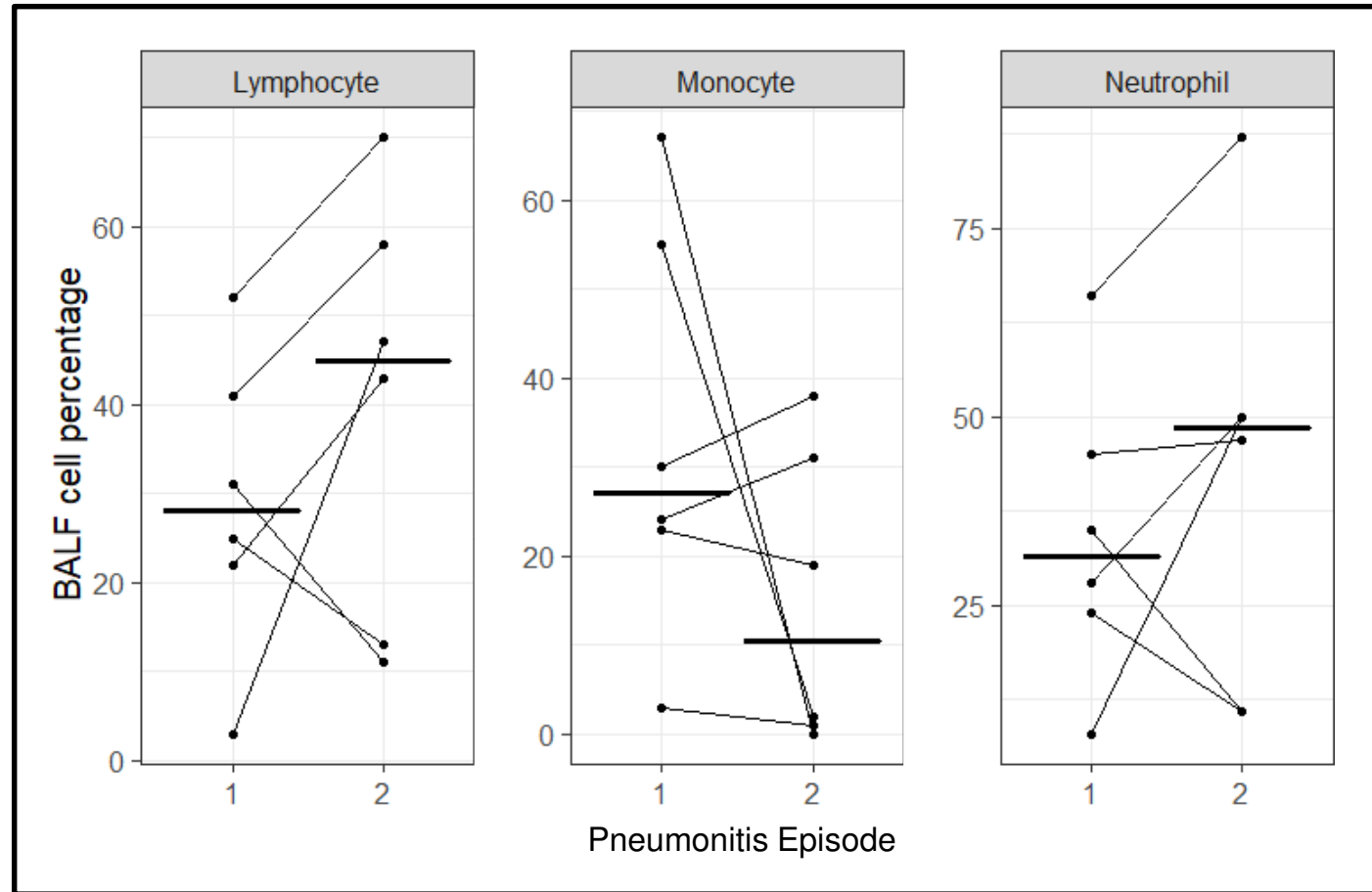
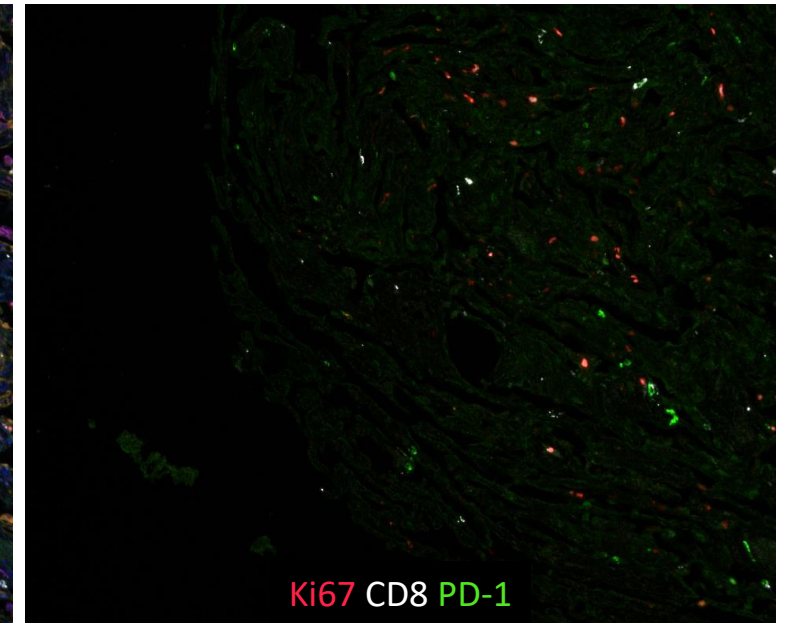
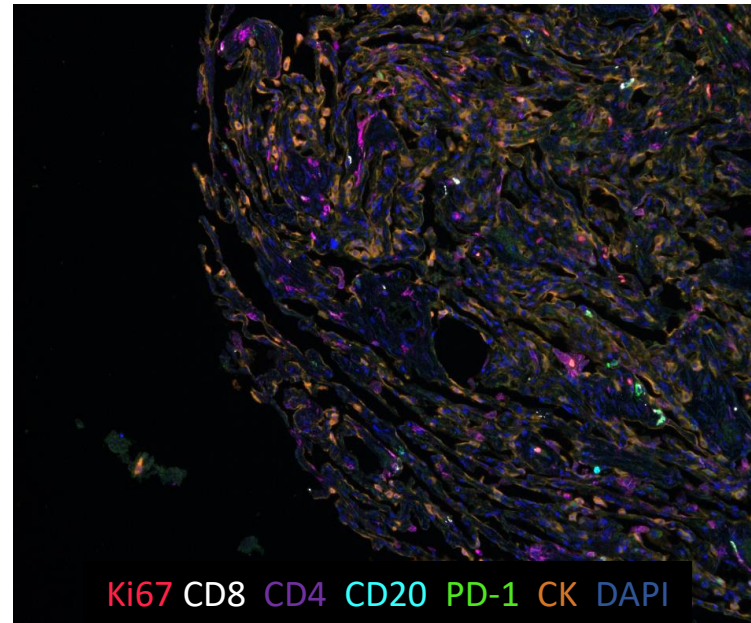
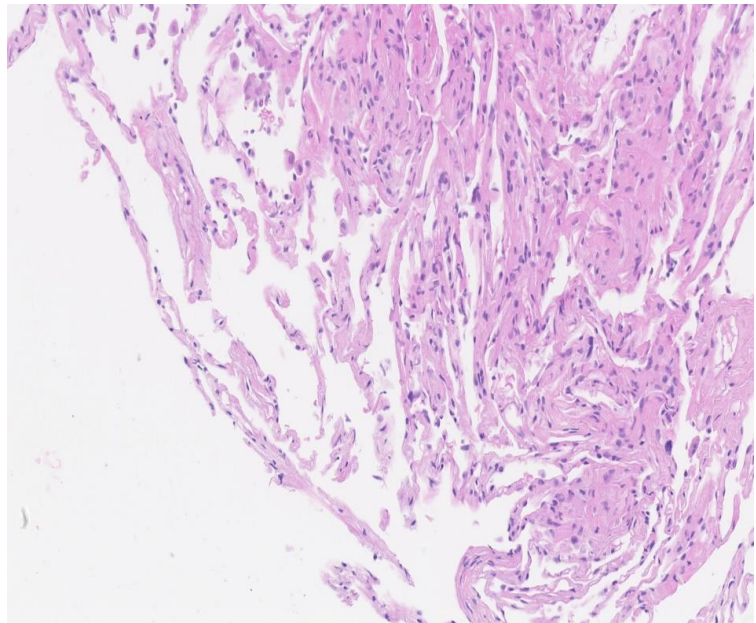
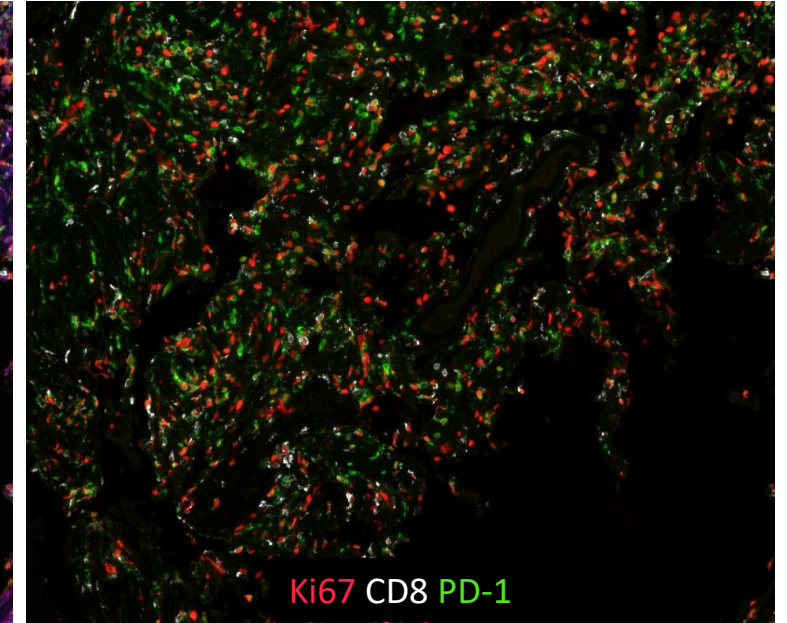
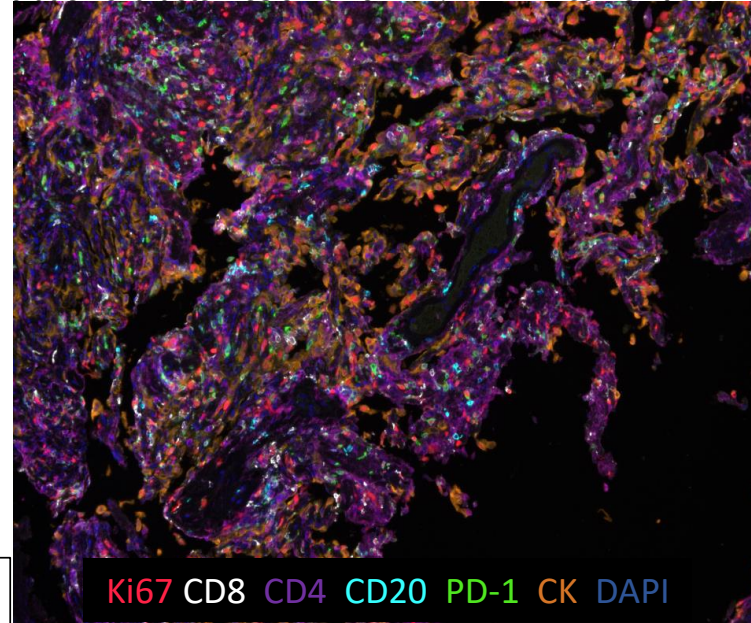
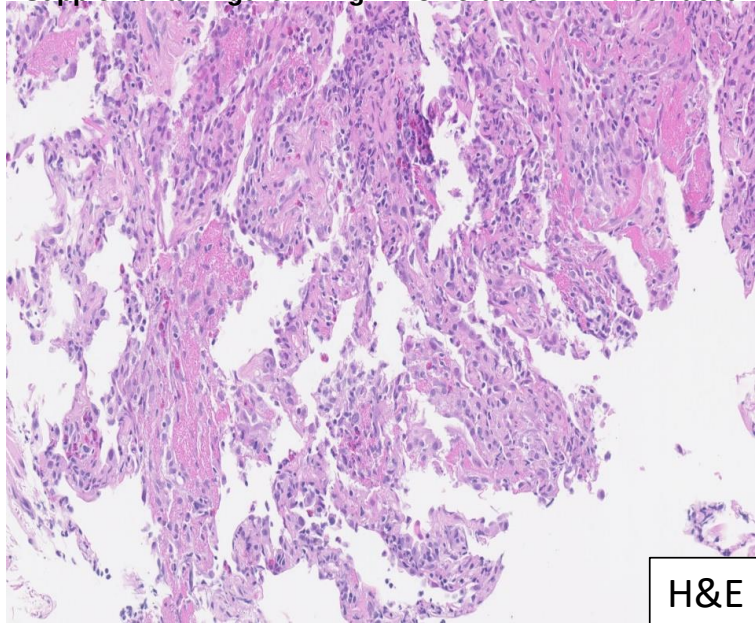


Supplemental Figure 1: Bronchoalveolar Lavage Fluid Cell Features in Patients with Chronic Immune Checkpoint Inhibitor Pneumonitis

Supplemental Figure 2: High Proliferative PD-1+ cell accumulation characterizes chronic PD-1/PD-L1 Pneumonitis



Supplemental Figure 3: Spaghetti Plots of Corticosteroid Use in Individual Patients with Chronic Immune Checkpoint Inhibitor Pneumonitis