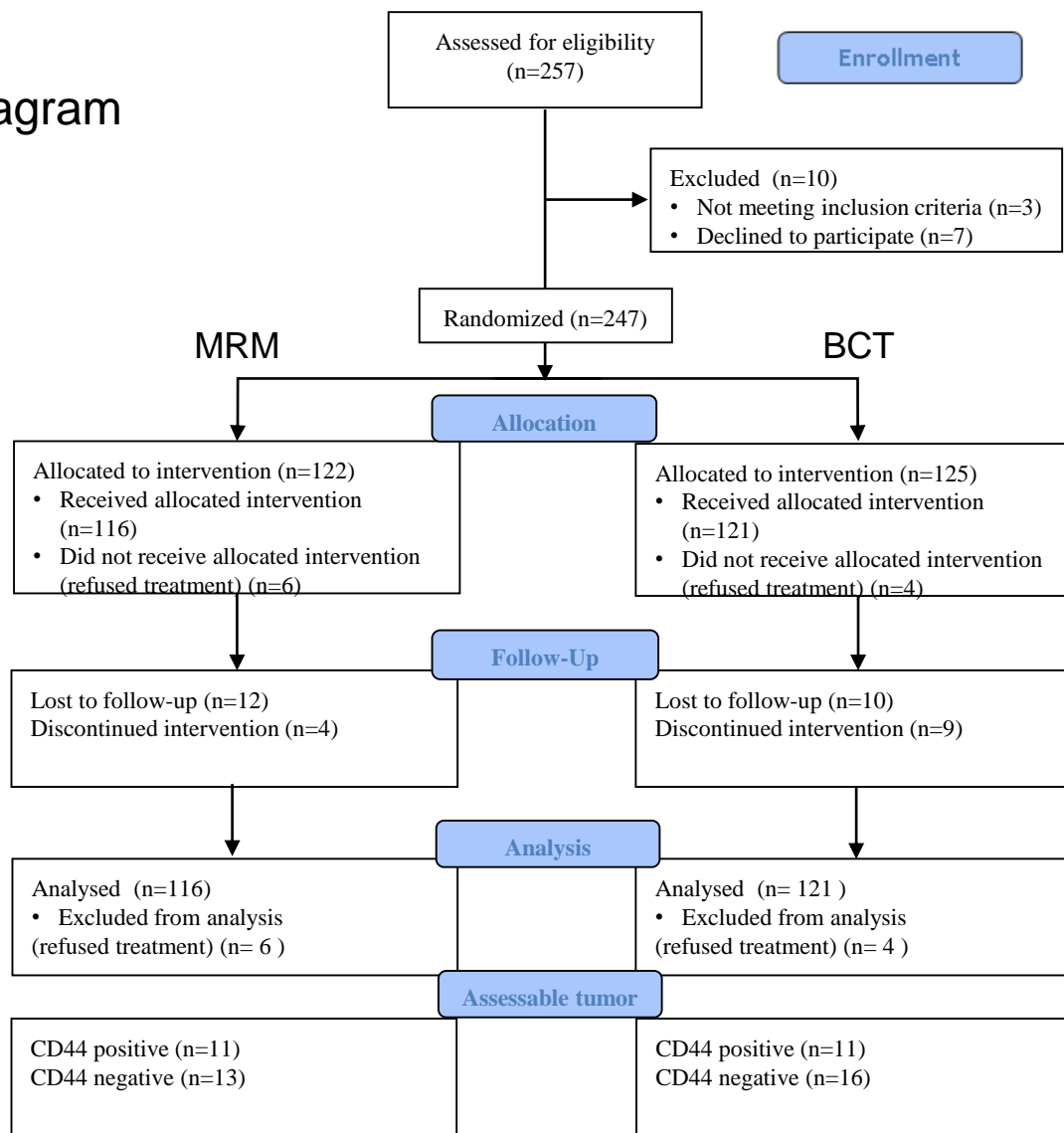


# SUPPLEMENTAL MATERIAL

# Supplement A CONSORT Diagram



✓ The desired Affymetrix IDs is valid: 212063\_at (cd44),

**Affymetrix ID:** 212063\_at

HCELL, IN, MIC4, CD44, Pgp1, MDU2, MC56, CD44R,

**Survival:** OS

**Split patients by:** median

**Follow up threshold:** all

**Censore at threshold:** not checked

**Compute median over entire database:** false

**Cutoff value used in analysis:** 5492

**Expression range of the probe:** 900 - 2362

**Probe set option:** only JetSet set

**Invert HR values below 1:** not checked

### Restrictions

**ER status:** all

*derive ER status from gene expression data:* not checked

**PR status:** all

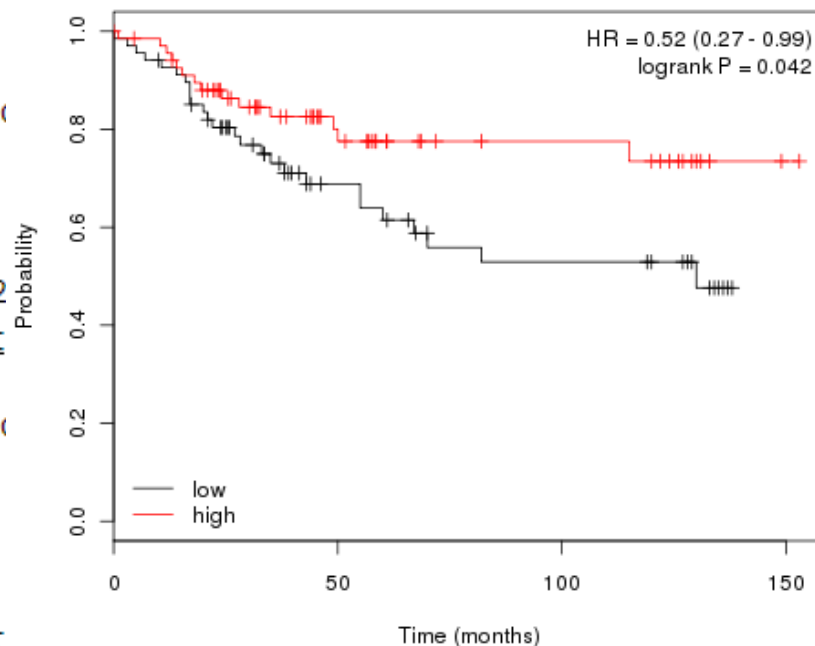
**Lymph node status:** Lym

**Molecular subtype:** all

**Grade:** all

**Use earlier release of the database:** 2012 version (n=2978)

**Array quality control:** exclude biased arrays



number at risk			
0	50	100	150
68	28	18	0
69	32	19	1

Gyorffy B, et al. An online survival analysis tool to rapidly assess the effect of 22,277 genes on breast cancer prognosis using microarray data of 1809 patients, Breast Cancer Res Treatment, 2010 Oct;123(3):725-31