

Figure S1. Increased Weight Loss and Shorter Colons in DSS+Ethanol Mice. (A) Mouse % weight change per experimental group, normalized to weight on day 0. Symbols represent the mean \pm SEM for the experimental group. (B) Mouse colon length after euthanasia on Day 7, 3 hours after the last gavage. (C) Combined histopathology score for the large intestine. Bars displays mean \pm SEM, with each symbol representing data from one mouse. Statistics by One-Way ANOVA with Tukey post-hoc test. $n=6-8$ per group. ** $p<0.01$, *** $p<0.001$, **** $p<0.0001$.

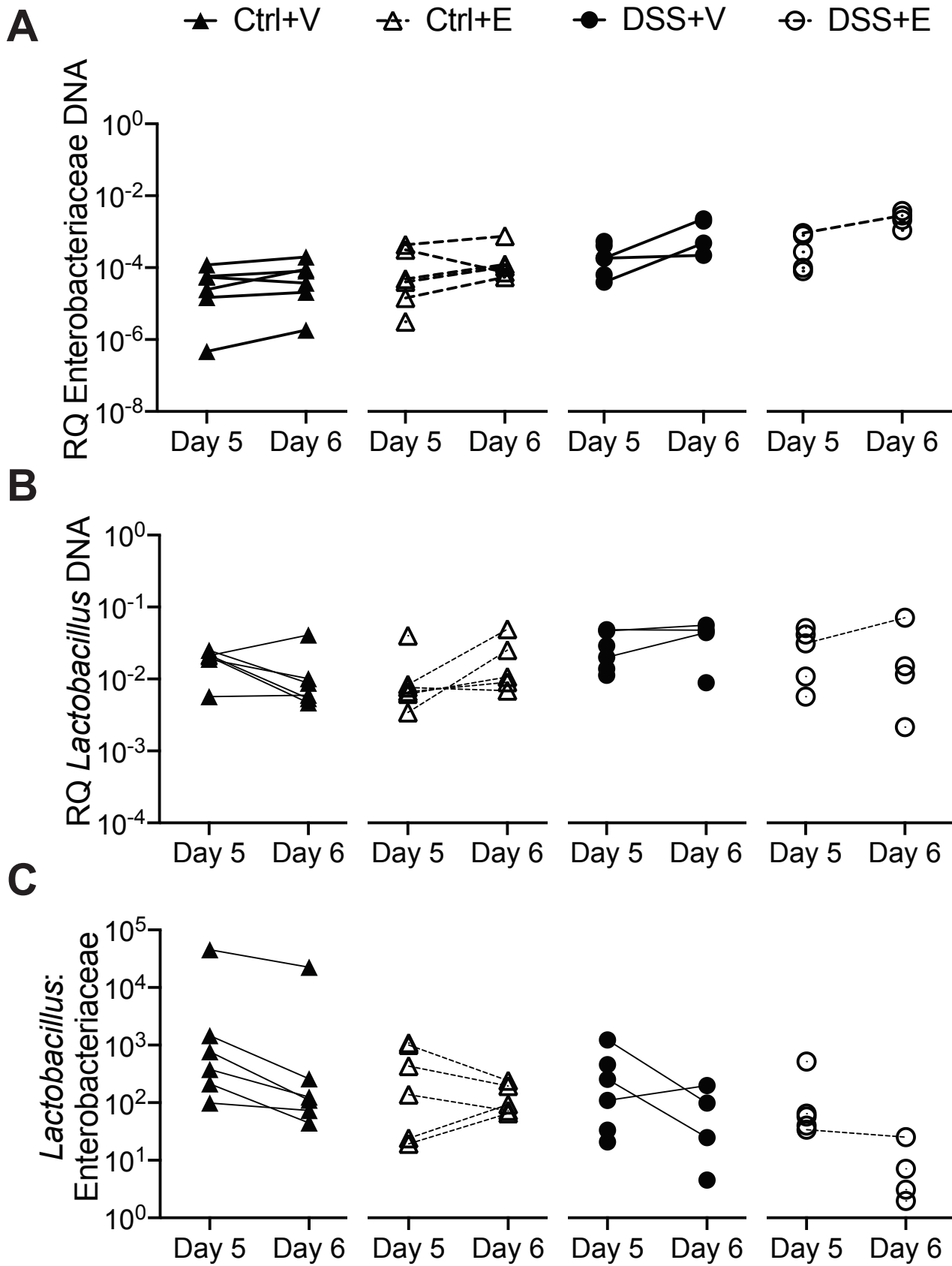


Figure S2. Enterobacteriaceae, *Lactobacillus*, and *Lactobacillus*:Enterobacteriaceae per Individual Samples in Fecal Pellets from Day 5 to Day 6. Fecal pellets were collected from mice after weighing and prior to gavage followed by DNA isolation, qPCR, and determination of bacterial RQ for (A) Enterobacteriaceae, (B) *Lactobacillus*, (C) *Lactobacillus*: Enterobacteriaceae. Each symbol represents data from one mouse with consecutive sampling from the same mouse indicated by a connecting line. RQ: Relative Quantity. n=4-6 per group.

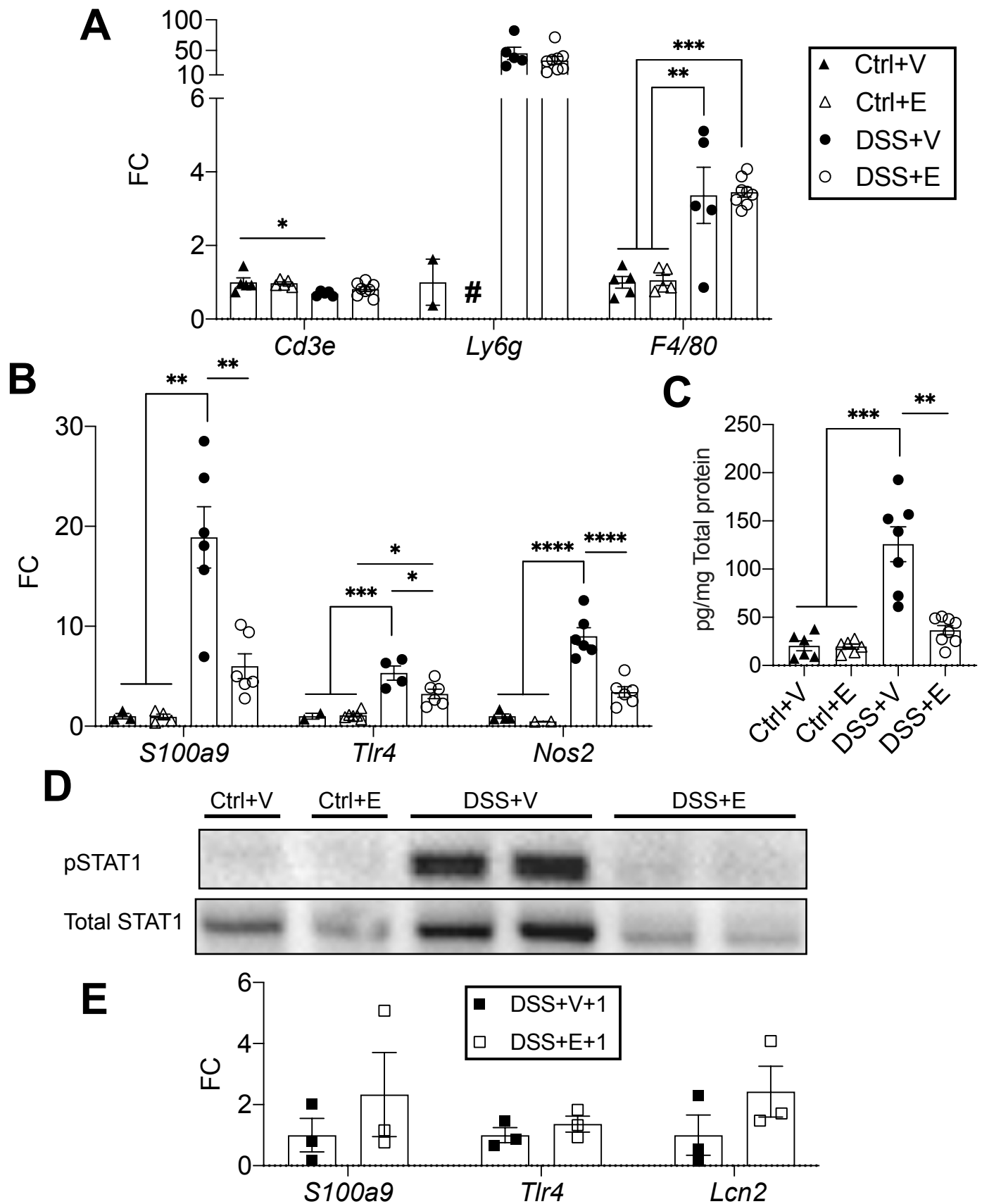


Figure S3. Hepatic Immune Cell Profiling, Additional Inflammatory Gene Expression, and STAT1 Phosphorylation. (A) Hepatic gene expression for infiltrating immune cells. # For Ly6g, all the Control+Ethanol samples were below the threshold for detection. n= 2-8 per group. (B) Hepatic inflammatory gene expression n=2-6 per group (C) Cxcl1 protein within liver homogenates. n=6-8 per group. (D) Hepatic pStat1 and total Stat1 western blot. (E) Hepatic inflammatory gene expression 24 hours after the last gavage of vehicle (DSS+V+1) or ethanol (DSS+E+1). n=3 per group. Bars displays mean \pm SEM, with each symbol representing data from one mouse. FC: Fold Change. Statistics by One-Way ANOVA with Tukey post-hoc test. * p<0.05 ** p<0.01, *** p<0.001, **** p<0.0001.