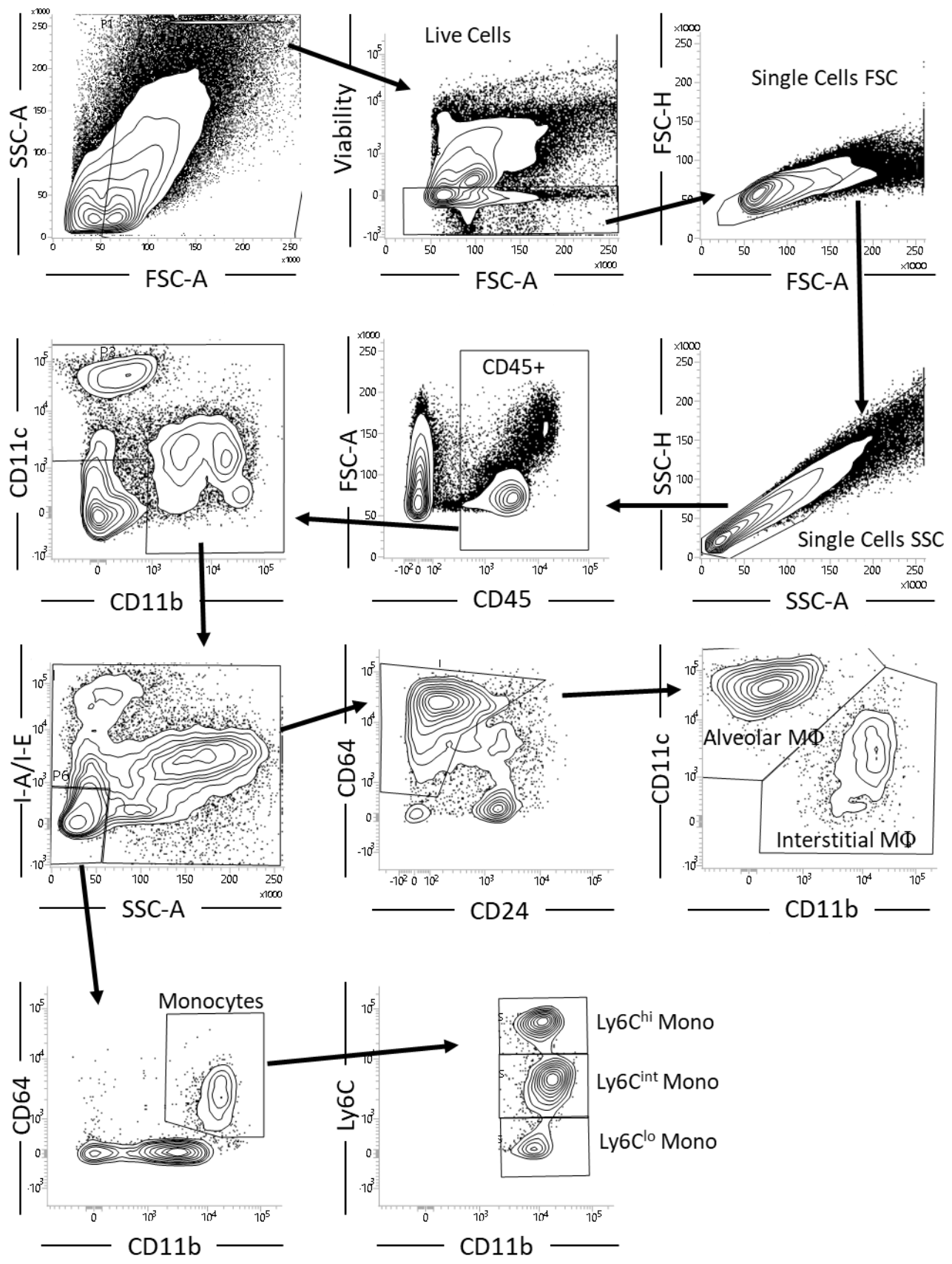
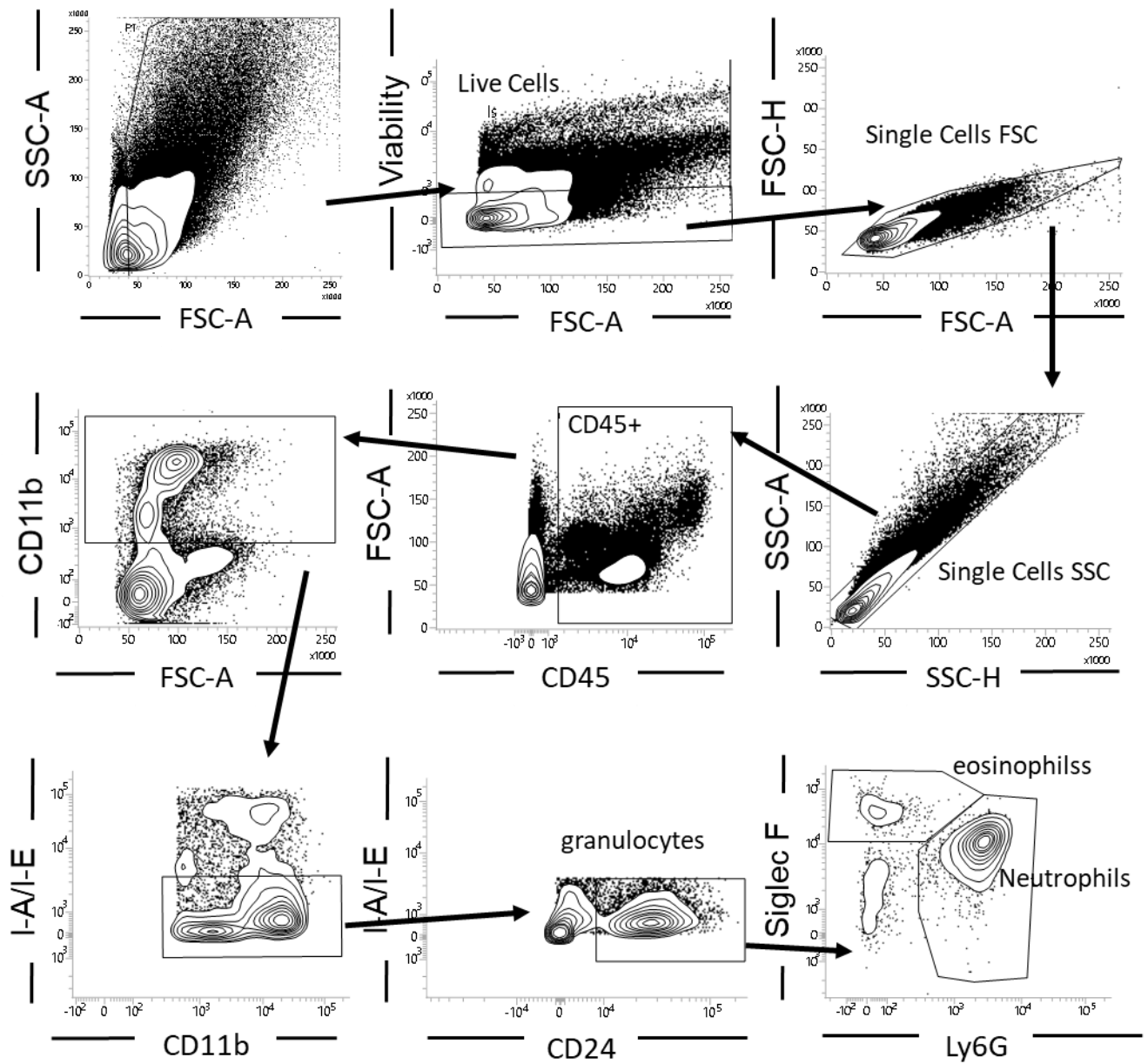


**Figure S1.** Follow-up of weight and bacteria burden of mice infected with *Streptococcus agalactiae* (GBS). Mice were infected intranasally with  $1.10^8$  CFUs of GBS. A, Percentage of initial weight loss in infected (black) and uninfected-PBS injected (Grey) mice (n is at least 10 for each time point). B, bacterial counts in lungs of mice. Detection limit: 0,75 bacteria/mg of Lungs. All data are mean  $\pm$  SD. Significant results are indicated (\* $P < 0,05$  \*\*\*\* $P < 0,0001$ , Mann-Whitney U test). Data are representative of three independent experiments



**Figure S2.** Gating strategy followed in flow cytometry analysis of recruitment of monocytes and macrophage sub-populations in the lungs of GBS-infected or uninfected PBS-injected mice.



**Figure S3.** Gating strategy followed in flow cytometry analysis of recruitment of neutrophils in the lungs of GBS-infected or uninfected PBS-injected mice.