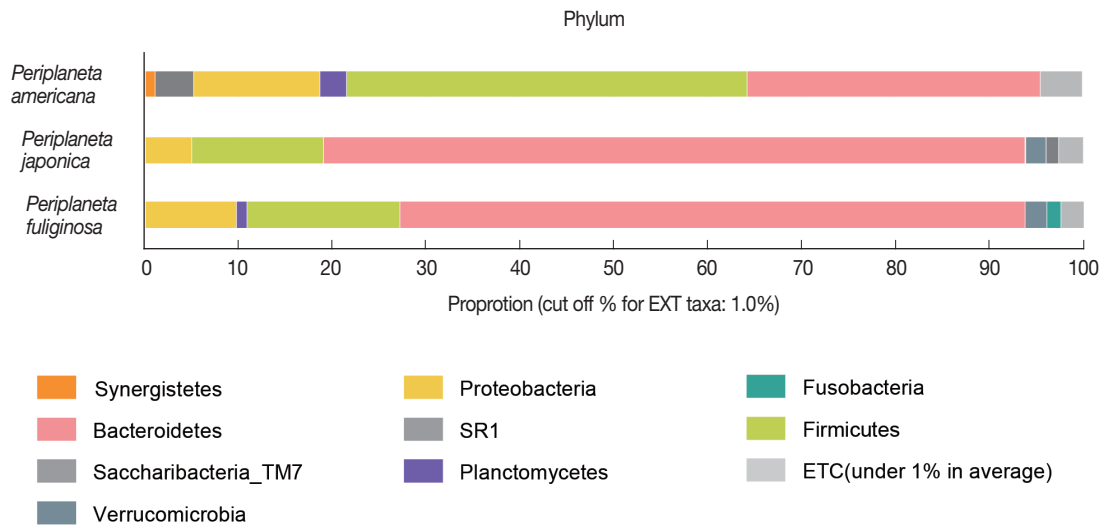


Supplementary Fig. S1. Rarefaction curves for the number of operational taxonomic units of the 3 cockroach species. (A) *Periplaneta americana*. (B) *Periplaneta japonica*. (C) *Periplaneta fuliginosa*.



Supplementary Fig. S2. Distribution of bacterial taxa at the phylum level in samples from 3 cockroach species, *Periplaneta americana*, *Periplaneta japonica*, and *Periplaneta fuliginosa*. Each bar depicts the mean relative abundance value of an independent replicate. Bacterial phyla comprising more than 1% of the reads are shown. Each bar depicts the mean relative abundance value of an independent replicate (n=6 for each of the 3 species).