

Figure 1-A

used for figure

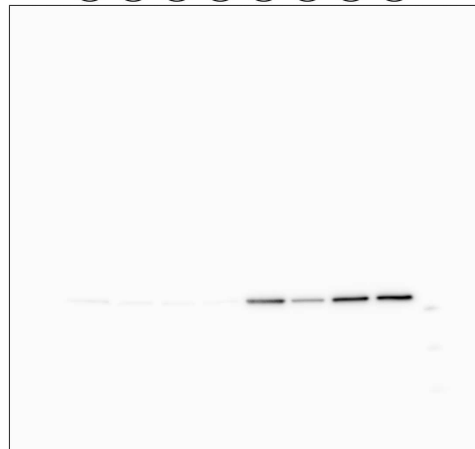
Top: α -SMA
Bottom: β -actin

① control ② 10 ng/ml FGF-2 ③ 50 ng/ml FGF-2 ④ 100 ng/ml FGF-2
⑤ TGF ⑥ TGF+ 10 ng/ml FGF-2 ⑦ TGF+ 50ng/ml FGF-2 ⑧ TGF+100 ng/ml FGF-2

① ② ③ ④ ⑤ ⑥ ⑦ ⑧



① ② ③ ④ ⑤ ⑥ ⑦ ⑧



① ② ③ ④ ⑤ ⑥ ⑦ ⑧



① ② ③ ④ ⑤ ⑥ ⑦ ⑧

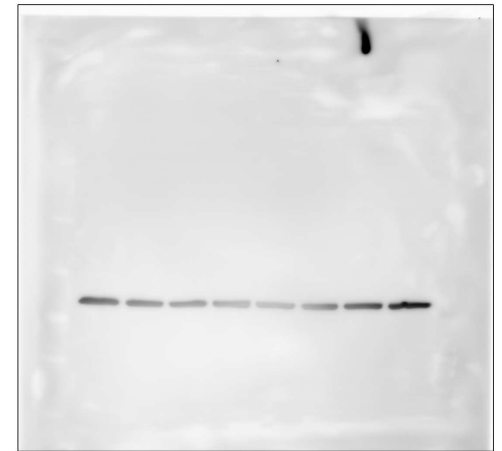
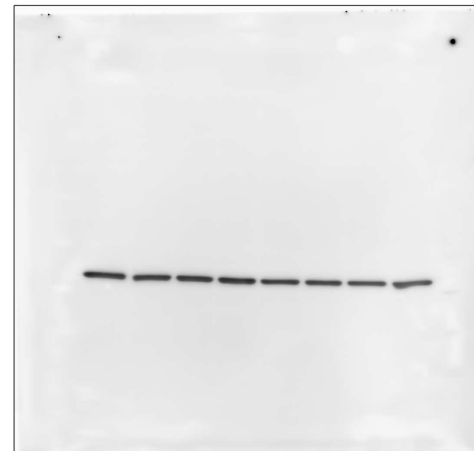
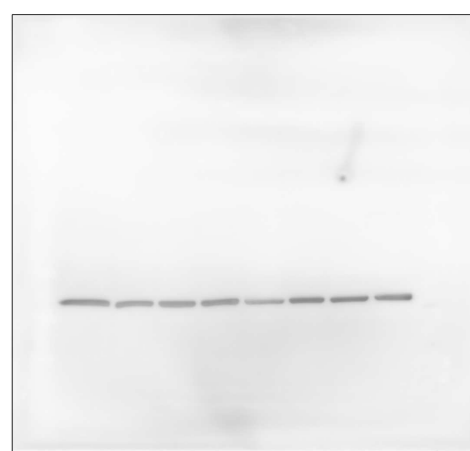
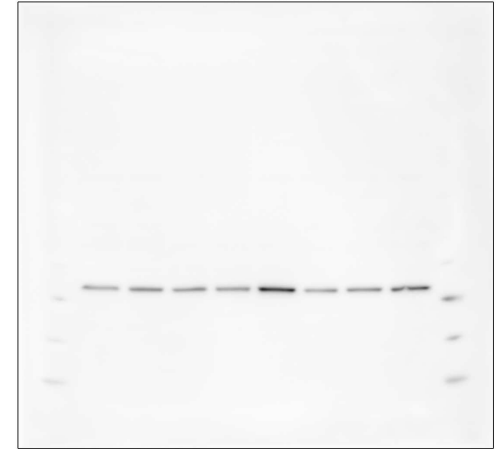


Figure 1-B

Top: α -SMA

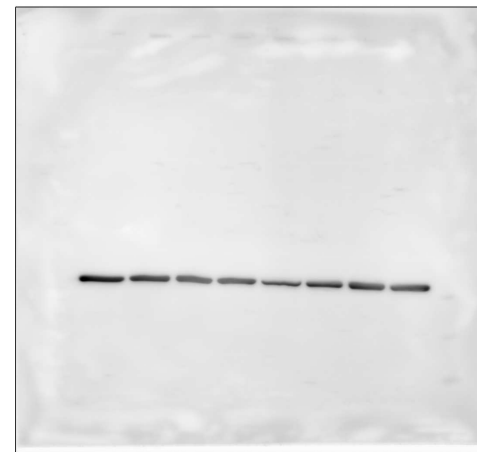
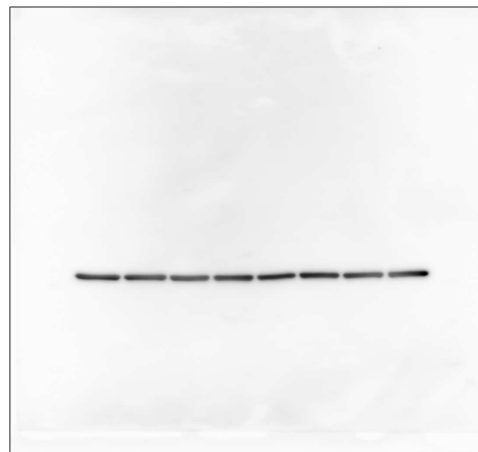
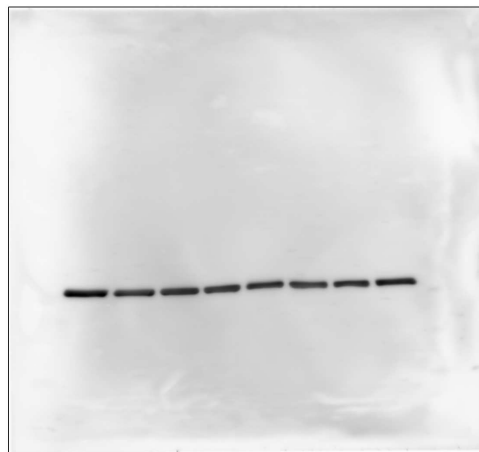
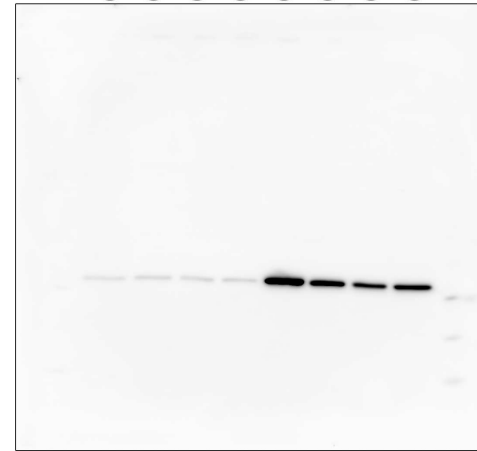
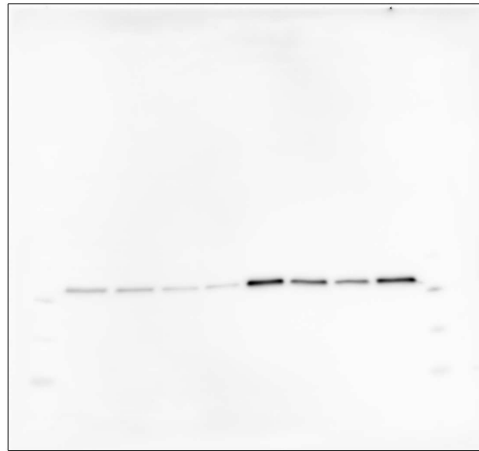
Bottom: β -actin

used for figure

①②③④⑤⑥⑦⑧

①②③④⑤⑥⑦⑧

①②③④⑤⑥⑦⑧



- ① control
- ② 2 ng/ml FGF-2
- ③ 10 ng/ml FGF-2
- ④ 50 ng/ml FGF-2
- ⑤ TGF ⑥ TGF + 2 ng/ml FGF-2
- ⑦ TGF + 10 ng/ml FGF-2
- ⑧ TGF + 50 ng/ml FGF-2

Figure 1-C

TOP: α -SMA

Bottom: β -actin

used for figure

①②③④⑤⑥⑦⑧

①②③④⑤⑥⑦⑧

①②③④⑤⑥⑦⑧



- ① control
- ② 2 ng/ml FGF-2
- ③ 10 ng/ml FGF-2
- ④ 50 ng/ml FGF-2
- ⑤ TGF
- ⑥ TGF+ 2 ng/ml FGF-2
- ⑦ TGF+ 10ng/ml FGF-2
- ⑧ TGF+50 ng/ml FGF-2

Figure 1-D

Top: fibronectin
Bottom: β -actin

used for figure

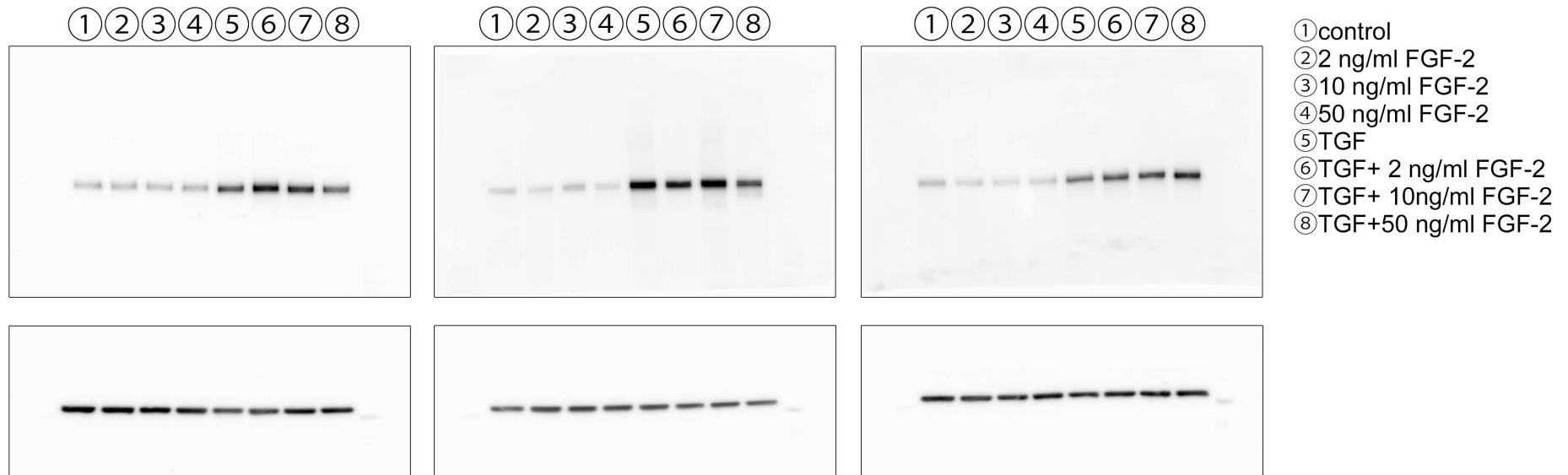


Figure 2-A
Top: α -SMA
Bottom: β -actin

①②③④①②③④①②③④

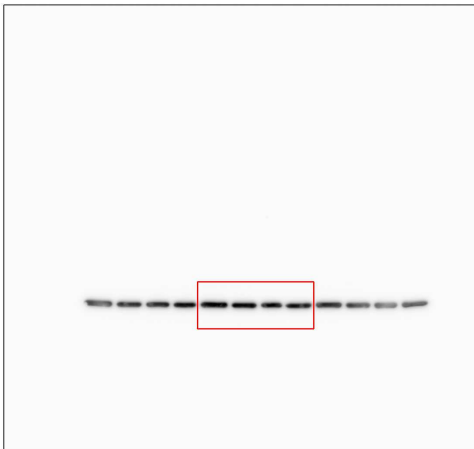


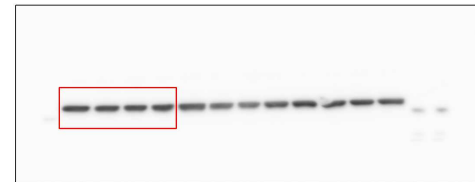
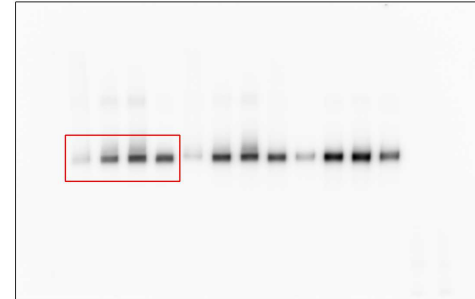
Figure 2-B
Top: COL 1
Bottom: β -actin

①②③④①②③④①②③④



Figure 2-C
Top: fibronectin
Bottom: β -actin

①②③④①②③④①②③④

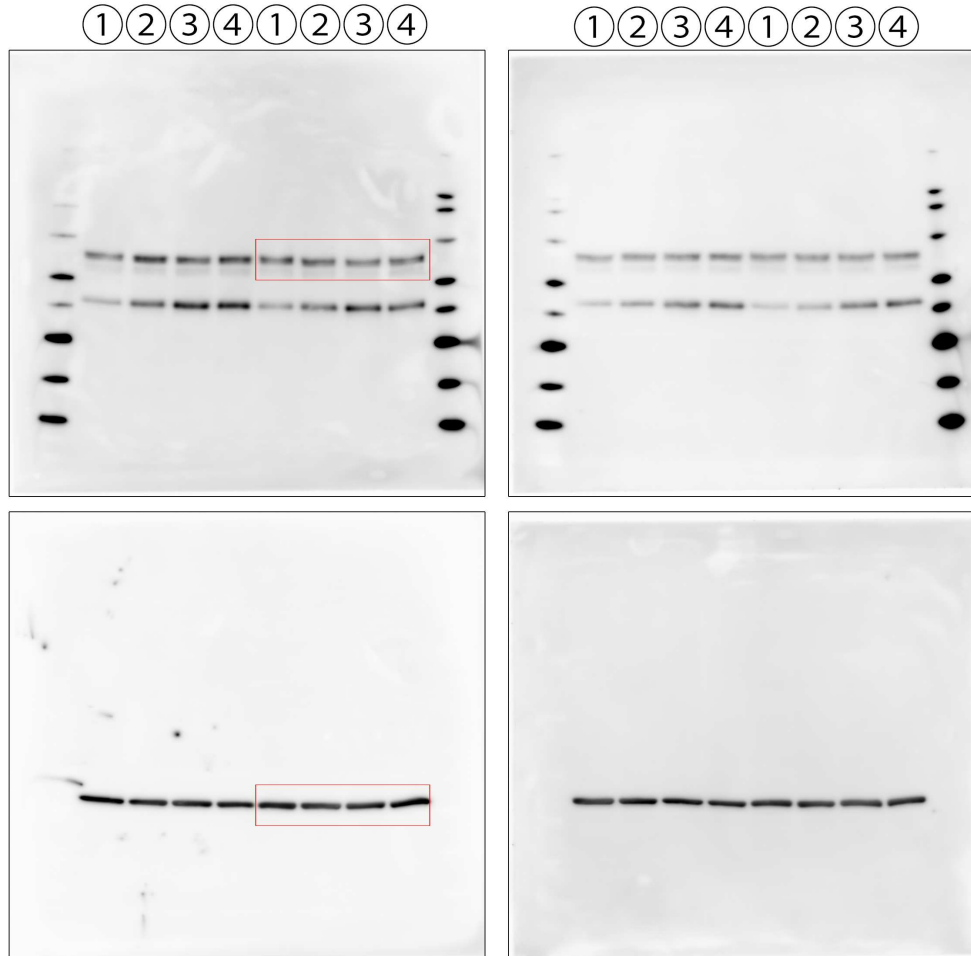


- ① control
- ② TGF
- ③ TGF+FGF-2
- ④ TGF+FGF-2+PD173074

Three samples were electrophoresed per gel.
The part used in the figure is shown in a red frame.

Figure 4-A

Top: YAP (70 kDa)
Bottom: β -actin

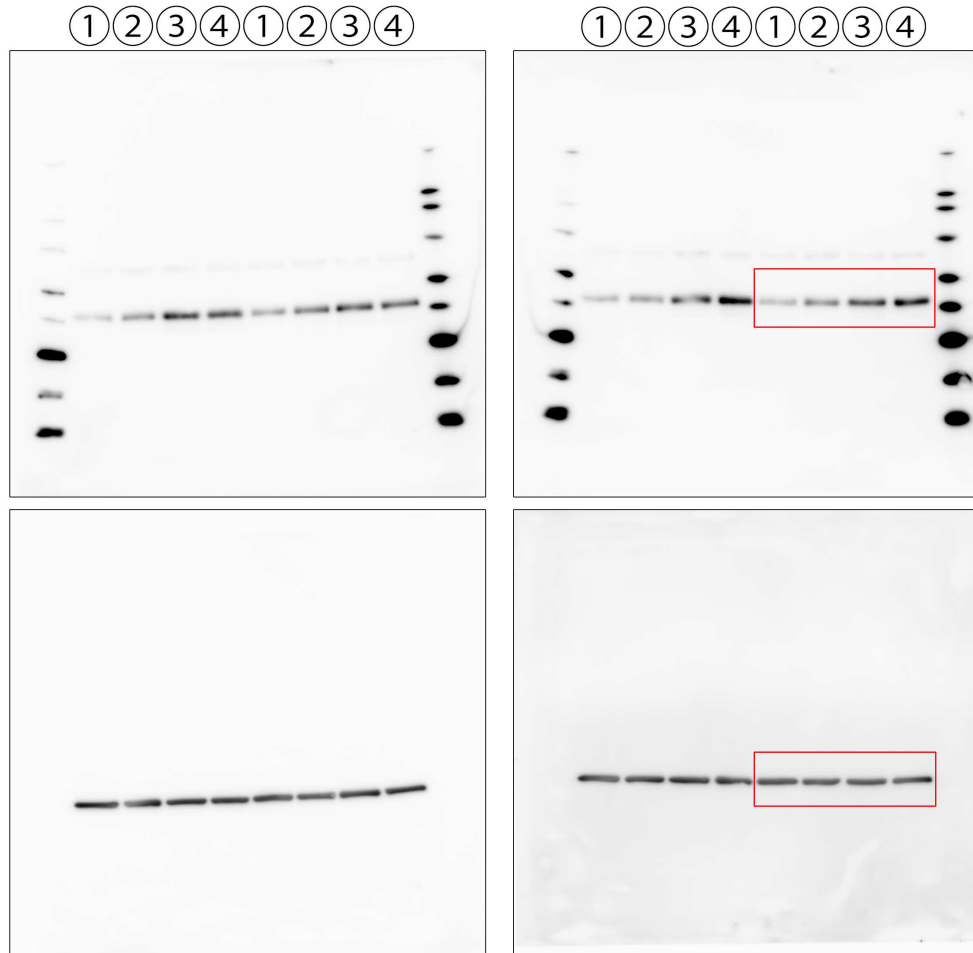


- ① control
- ② FGF-2
- ③ TGF
- ④ TGF+FGF-2

Two samples were electrophoresed per gel. (4 samples in total)

The part used in the figure is shown in a red frame.

Figure 4-B Top: TAZ
Bottom: β -actin



- ① control
- ② FGF-2
- ③ TGF
- ④ TGF+FGF-2

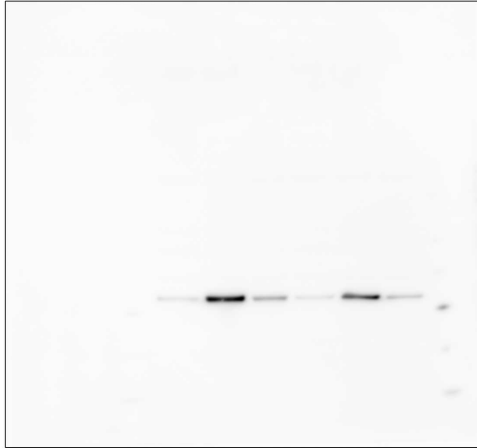
Two samples were electrophoresed per gel. (4 samples in total)

The part used in the figure is shown in a red frame.

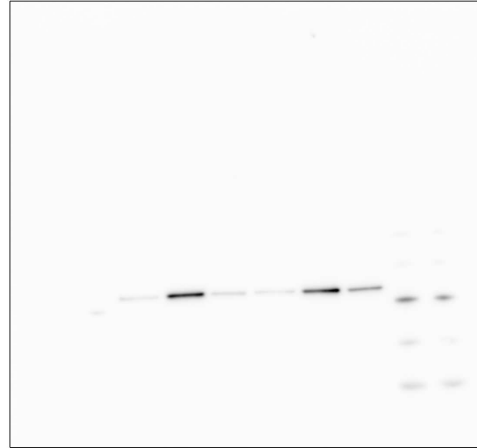
Figure 5-A Top: α -SMA
Bottom: β -actin

used for figure

①②③④⑤⑥



①②③④⑤⑥



①②③④⑤⑥



- ① 6well-control
- ② 6well-TGF
- ③ 6well-TGF+FGF-2
- ④ 64 kPa-control
- ⑤ 64 kPa-TGF
- ⑥ 64 kPa-TGF+FGF-2

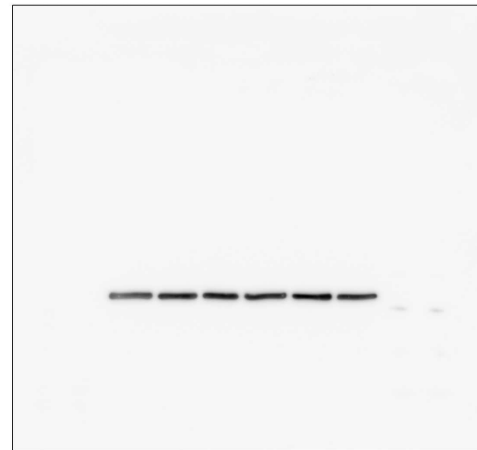


Figure 5-B

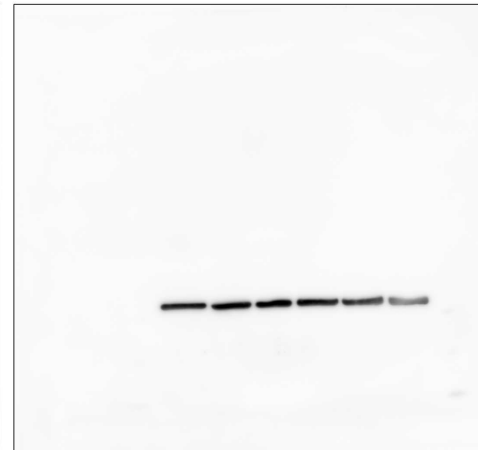
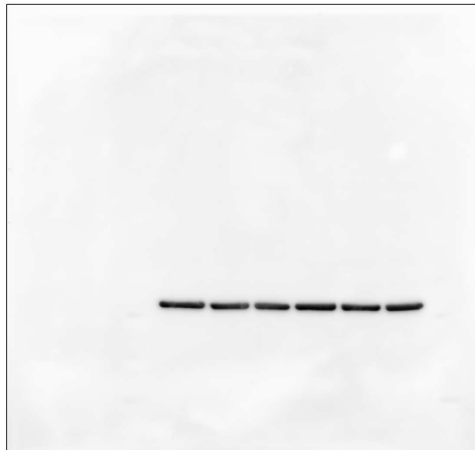
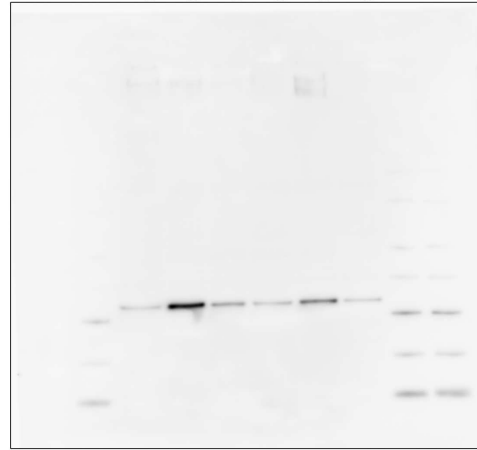
Top: α -SMA
Bottom: β -actin

used for figure

①②③④⑤⑥

①②③④⑤⑥

①②③④⑤⑥



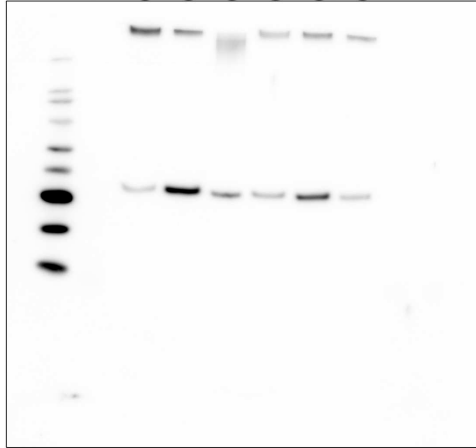
- ① 6well-control
- ② 6well-TGF
- ③ 6well-TGF+FGF-2
- ④ 0.2 kPa-control
- ⑤ 0.2 kPa-TGF
- ⑥ 0.2 kPa-TGF+FGF-2

Figure 5-C

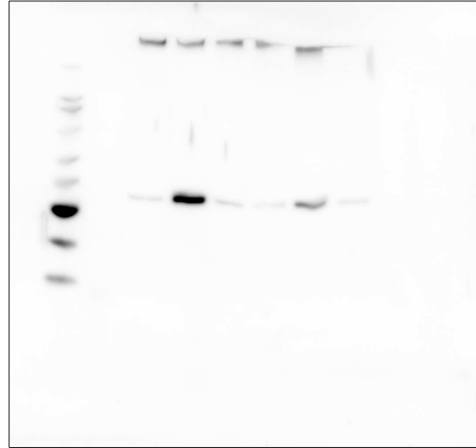
Top: α -SMA
Bottom: β -actin

used for figure

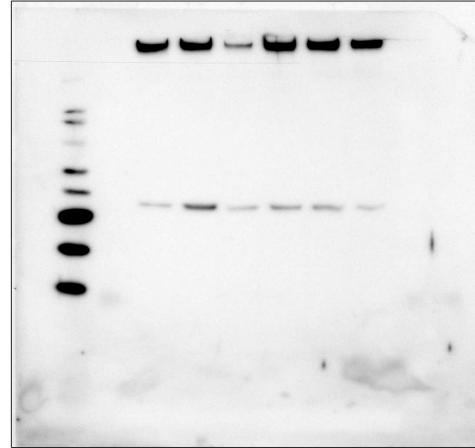
①②③④⑤⑥



①②③④⑤⑥



①②③④⑤⑥



- ① 64 kPa-control
- ② 64 kPa-TGF
- ③ 64 kPa-TGF+FGF-2
- ④ 0.2 kPa-control
- ⑤ 0.2 kPa-TGF
- ⑥ 0.2 kPa-TGF+FGF-2

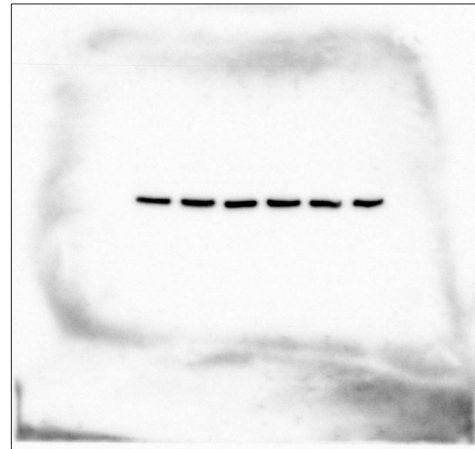
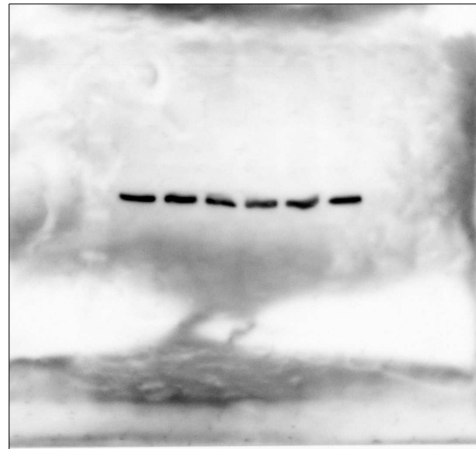
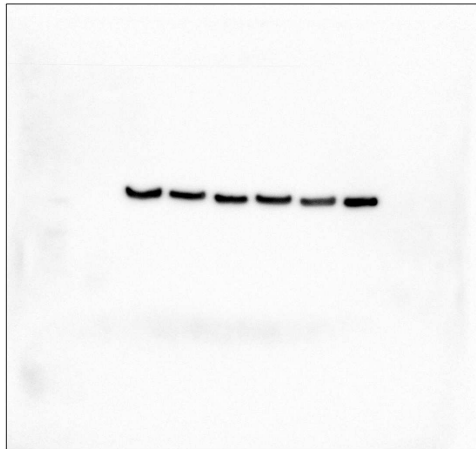
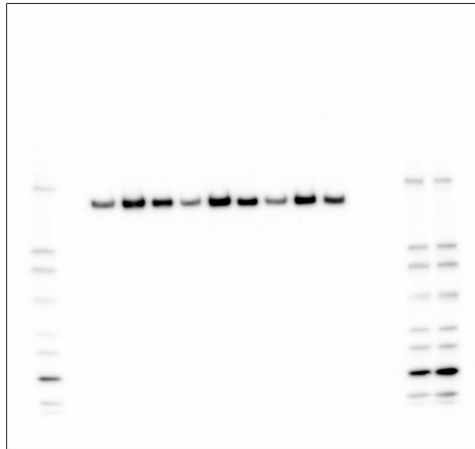


Figure 5-D

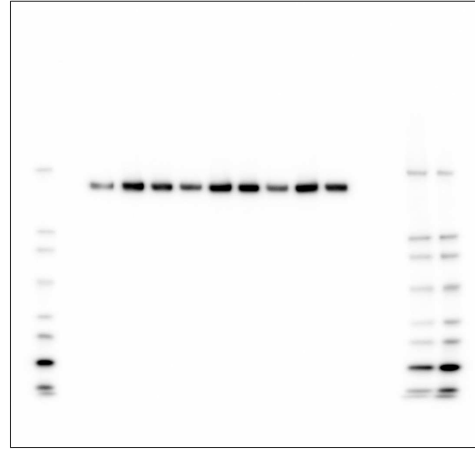
Top: Col I
Bottom: β -actin

used for figure

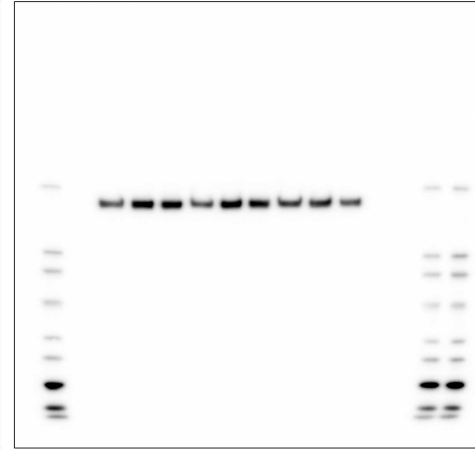
①②③④⑤⑥⑦⑧⑨



①②③④⑤⑥⑦⑧⑨



①②③④⑤⑥⑦⑧⑨



- ① 6well-control
- ② 6well-TGF
- ③ 6well-TGF+FGF-2
- ④ 64 kPa-control
- ⑤ 64 kPa-TGF
- ⑥ 64 kPa-TGF+FGF-2
- ⑦ 0.2 kPa-control
- ⑧ 0.2 kPa-TGF
- ⑨ 0.2 kPa-TGF+FGF-2

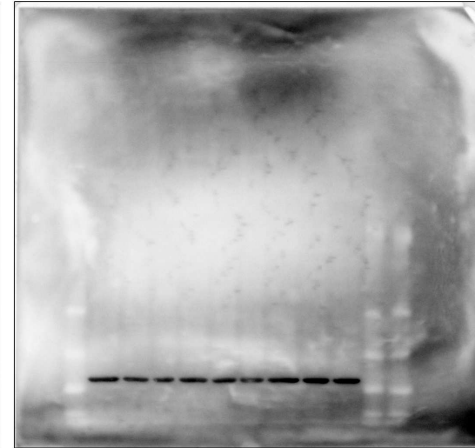
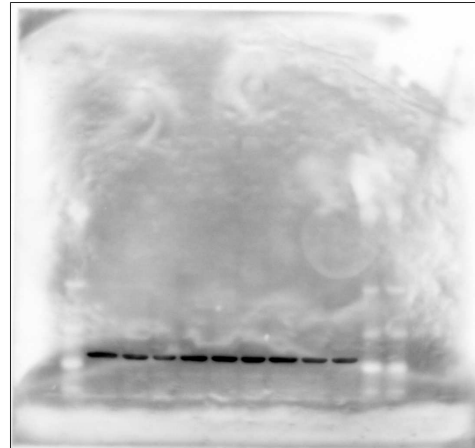
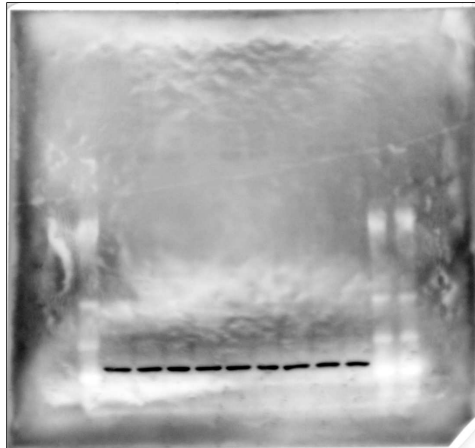


Figure 5-E

Top: FN
Bottom: β -actin

used for figure

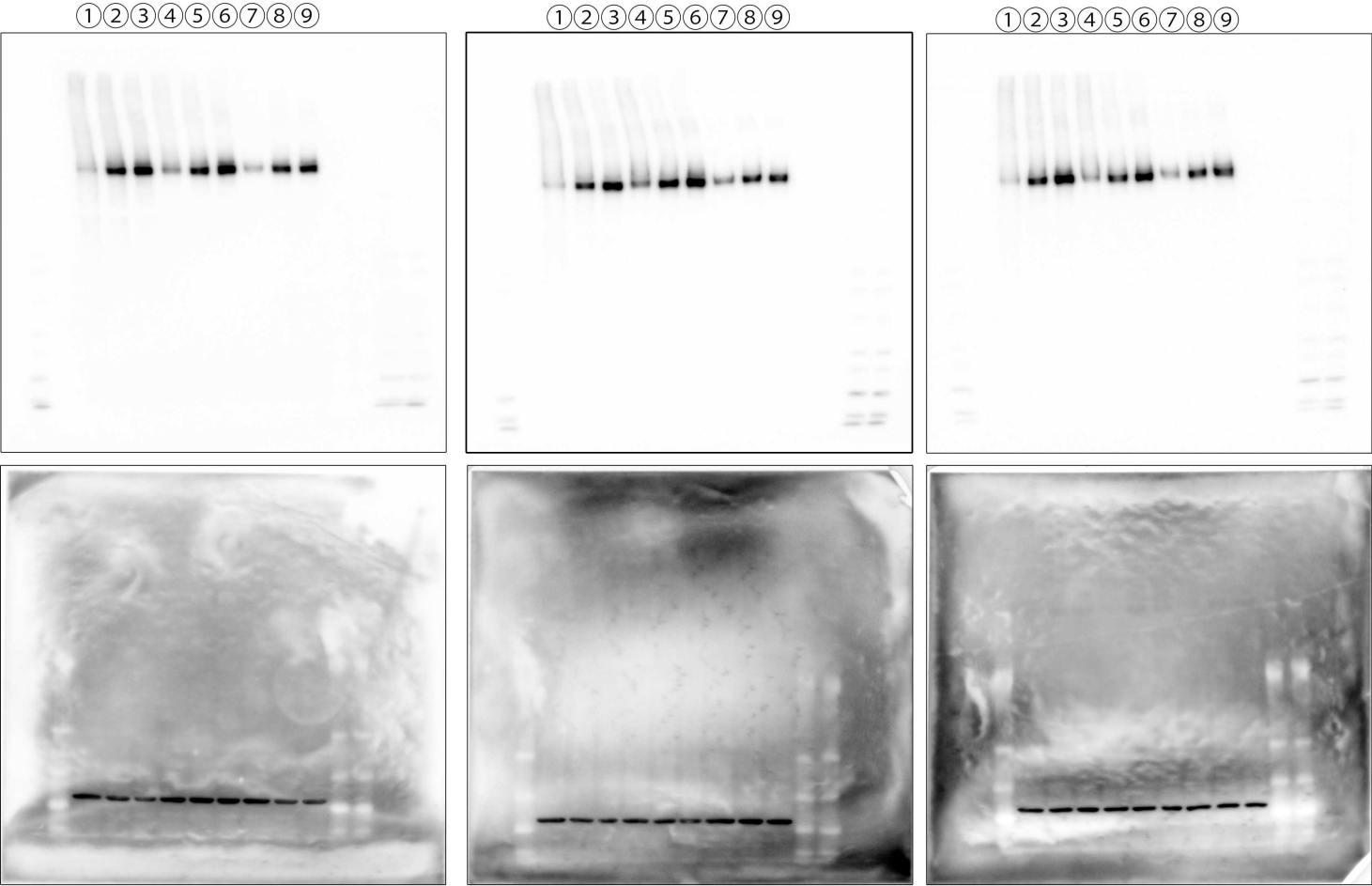


Figure 6-A Top: YAP (70 kDa)
Bottom: β -actin

used for figure

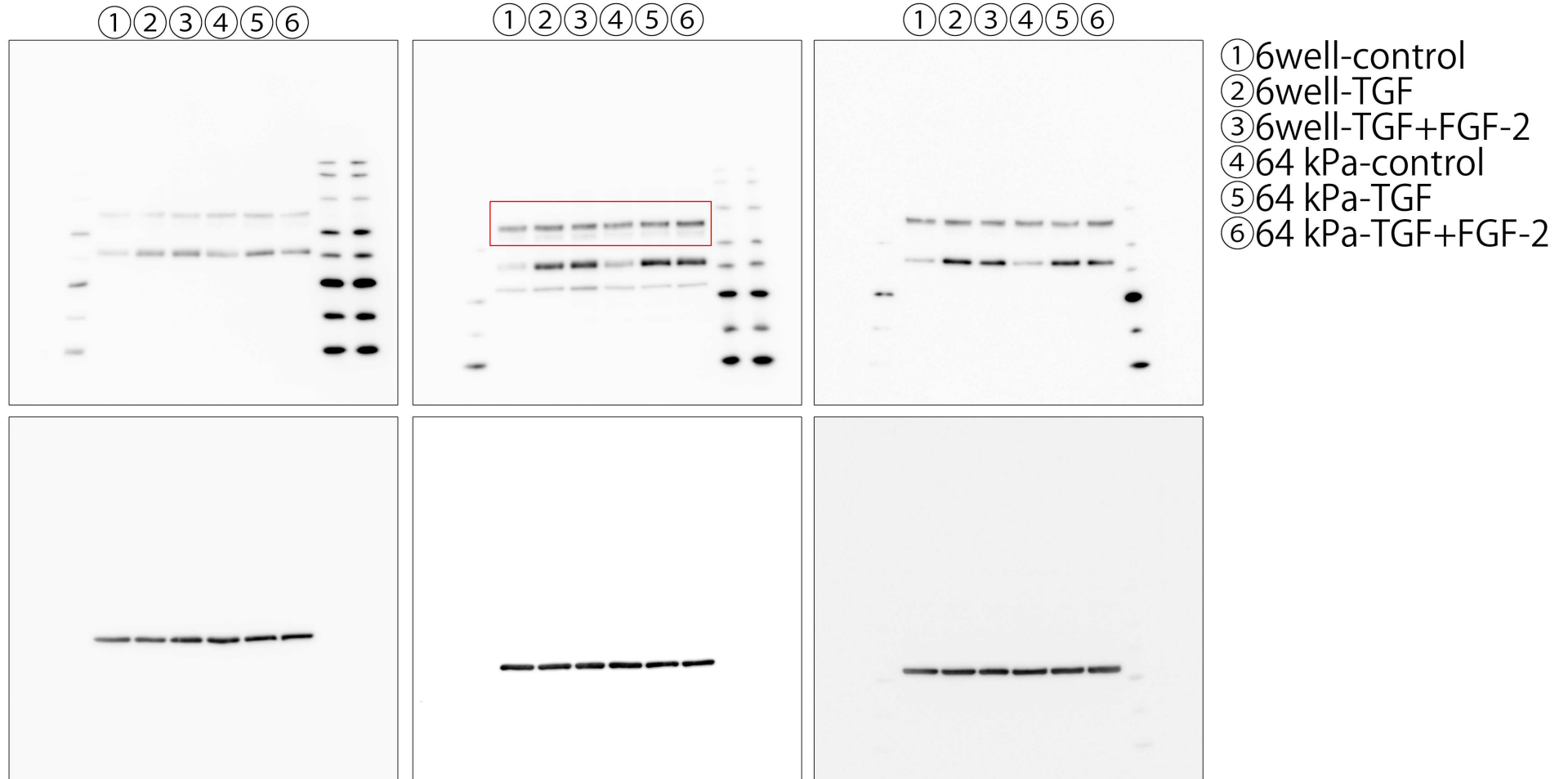


Figure 6-B

Top: YAP (70kDa)
Bottom: β -actin

used for figure

①②③④⑤⑥

①②③④⑤⑥

①②③④⑤⑥

- ① 6well-control
- ② 6well-TGF
- ③ 6well-TGF+FGF-2
- ④ 0.2 kPa-control
- ⑤ 0.2 kPa-TGF
- ⑥ 0.2 kPa-TGF+FGF-2

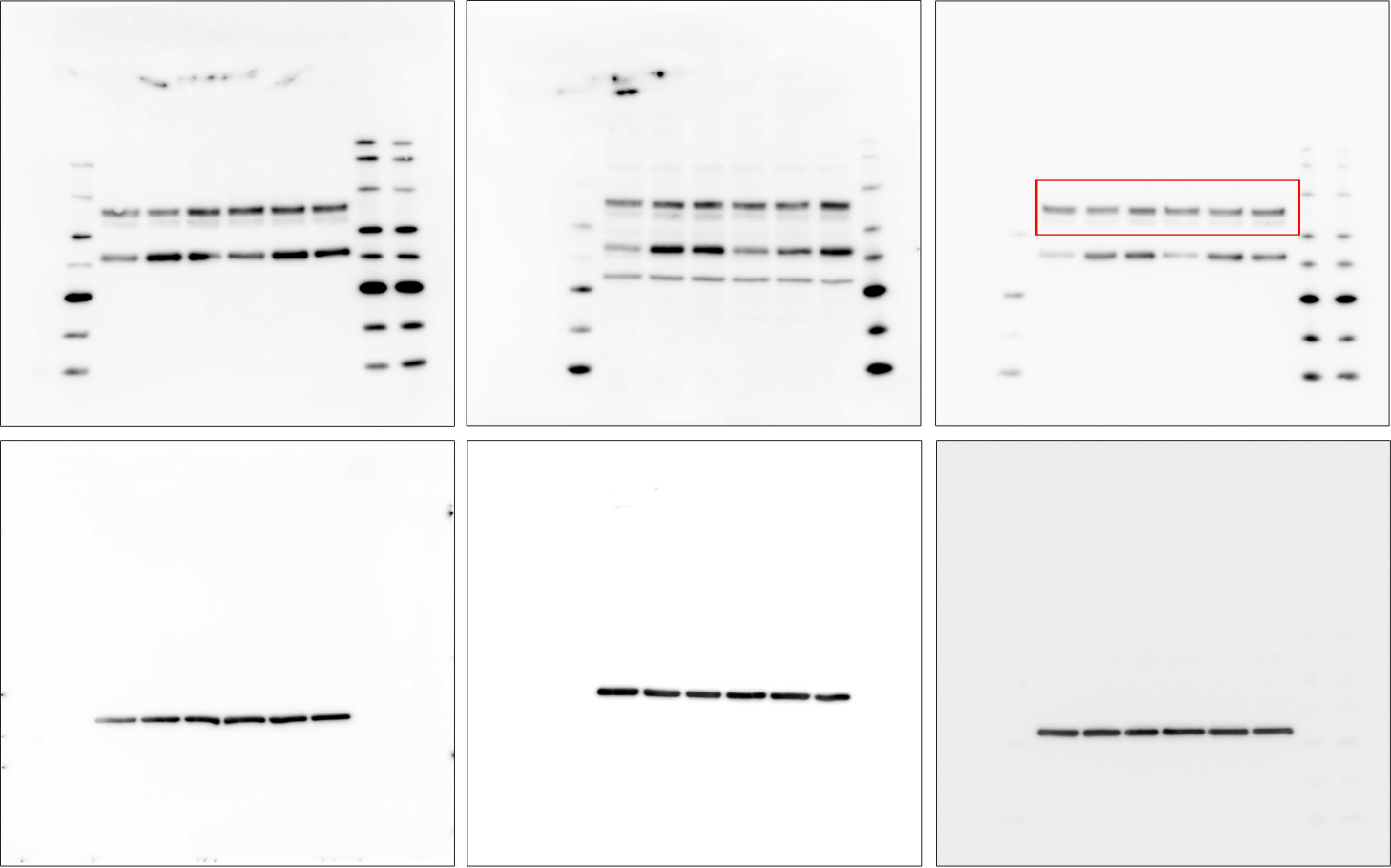


Figure 6-C

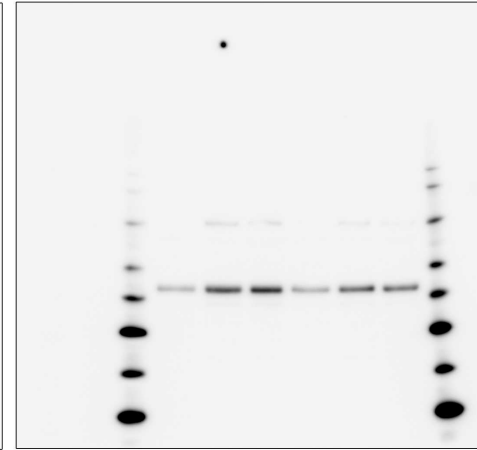
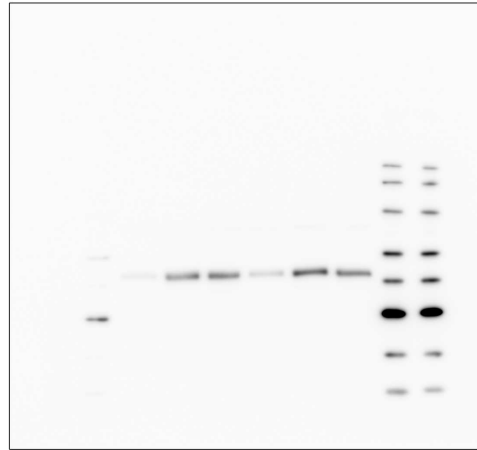
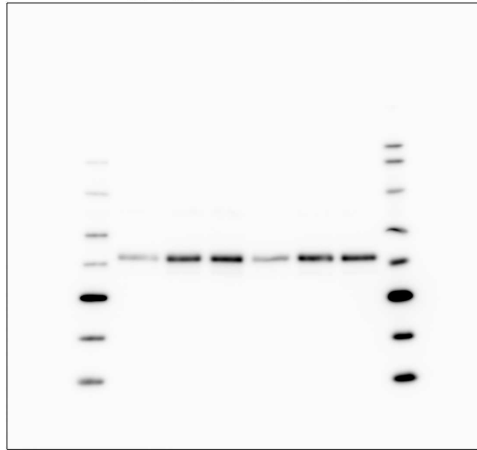
Top: TAZ
Bottom: β -actin

used for figure

①②③④⑤⑥

①②③④⑤⑥

①②③④⑤⑥



- ① 6well-control
- ② 6well-TGF
- ③ 6well-TGF+FGF-2
- ④ 64 kPa-control
- ⑤ 64 kPa-TGF
- ⑥ 64 kPa-TGF+FGF-2

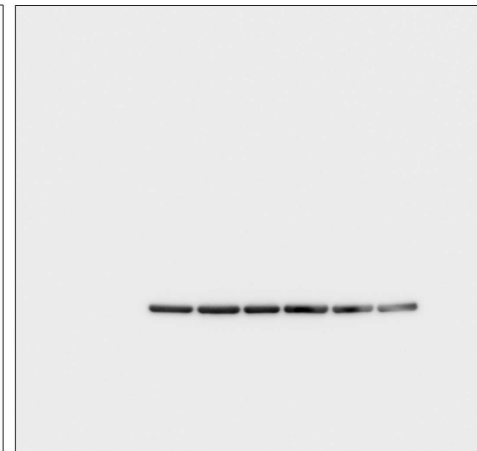
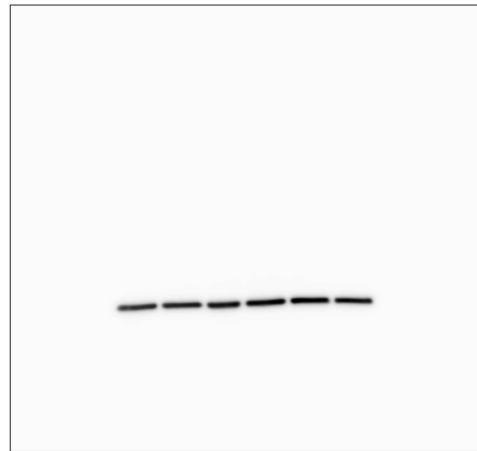
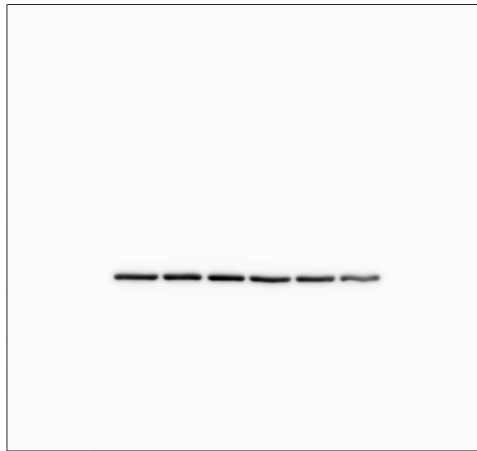


Figure 6-D

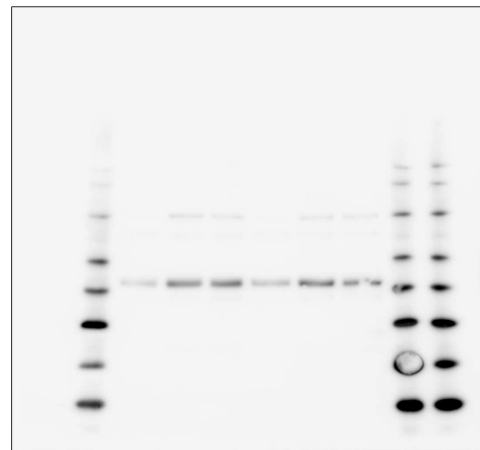
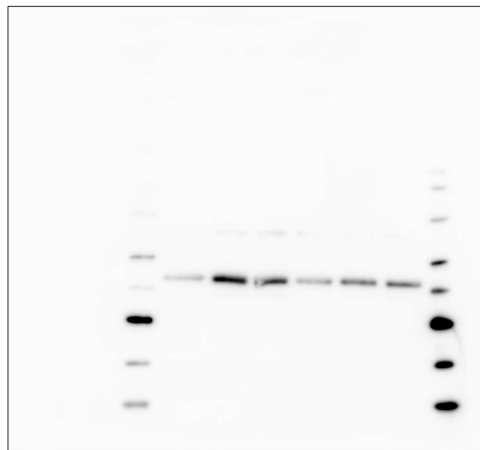
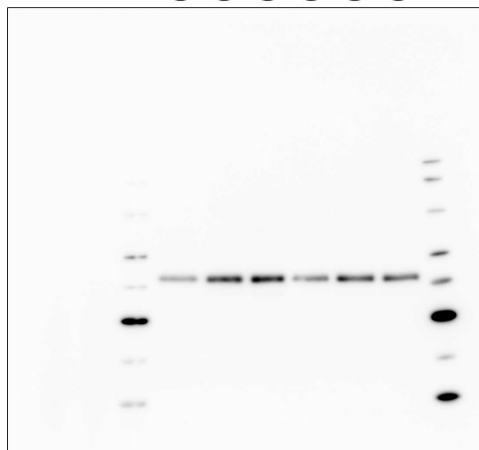
Top: TAZ
Bottom: β -actin

used for figure

①②③④⑤⑥

①②③④⑤⑥

①②③④⑤⑥



- ① 6well-control
- ② 6well-TGF
- ③ 6well-TGF+FGF-2
- ④ 0.2 kPa-control
- ⑤ 0.2 kPa-TGF
- ⑥ 0.2 kPa-TGF+FGF-2

