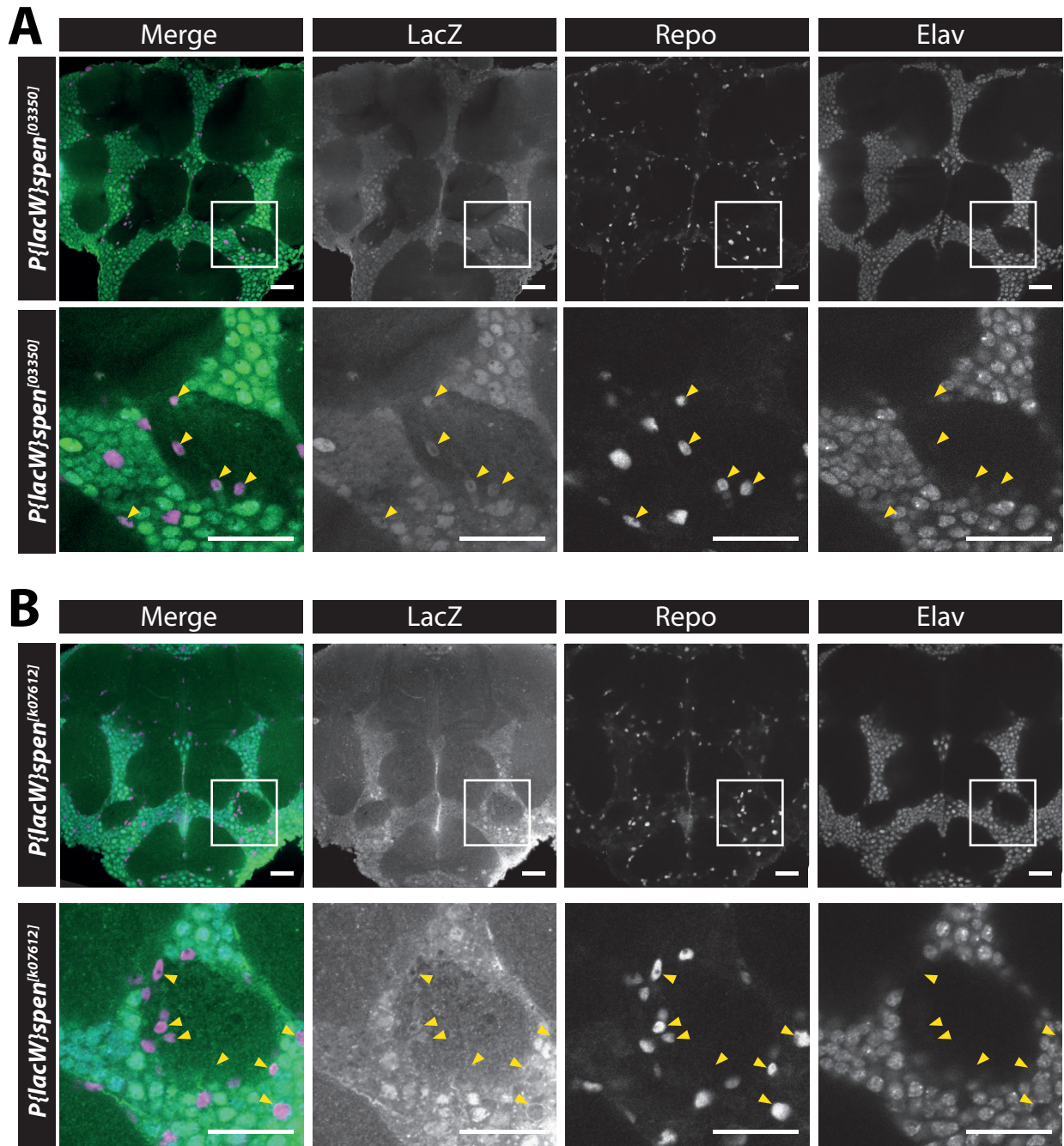


## Girard et al, Supplemental Figure 2



**Figure S2. *spen* is expressed in both glia and neurons in *Drosophila* adult brain.**

(A) *spen* expression domain in adult brain was assessed by immunostaining of LacZ (green) reporter gene in whole mount brain of 2 enhancer trap lines: *P{lacW}spen<sup>[03350]</sup>*, (A) and *P{lacW}spen<sup>[k07612]</sup>*, (B). Glial cell nuclei are visualized using Repo staining (magenta) and neuron nuclei using Elav staining (cyan). Expression of *spen* in glial cells is indicated with yellow arrowheads. Scale bar: 25 $\mu$ m.