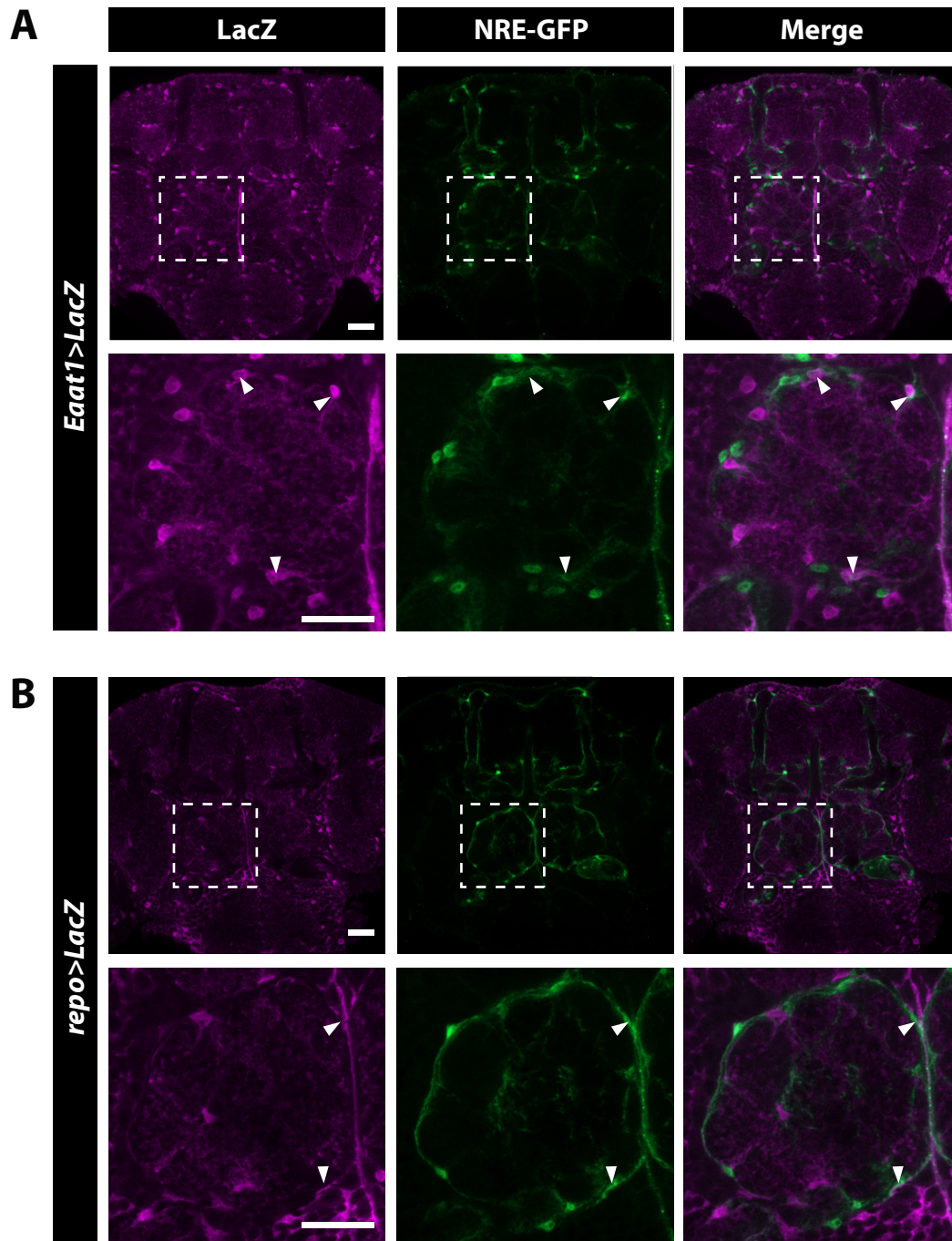


## Girard et al, Supplemental Figure 4



**Figure S4. Notch signaling is activated in adult *Eaat1*+ glial cells .**

Confocal microscopy of whole-mount brain of flies carrying Notch activation reporter NRE-GFP (green) expressing LacZ (magenta) under the control of glial driver *Eaat1-Gal4* (A) and *repo-Gal4* (B). NRE-GFP and LacZ co-localisation in glial cells *Eaat1* or *repo* positive is indicated with white arrowheads. Scale bar: 25 $\mu$ m.