

Girard et al, Supplemental Figure 6

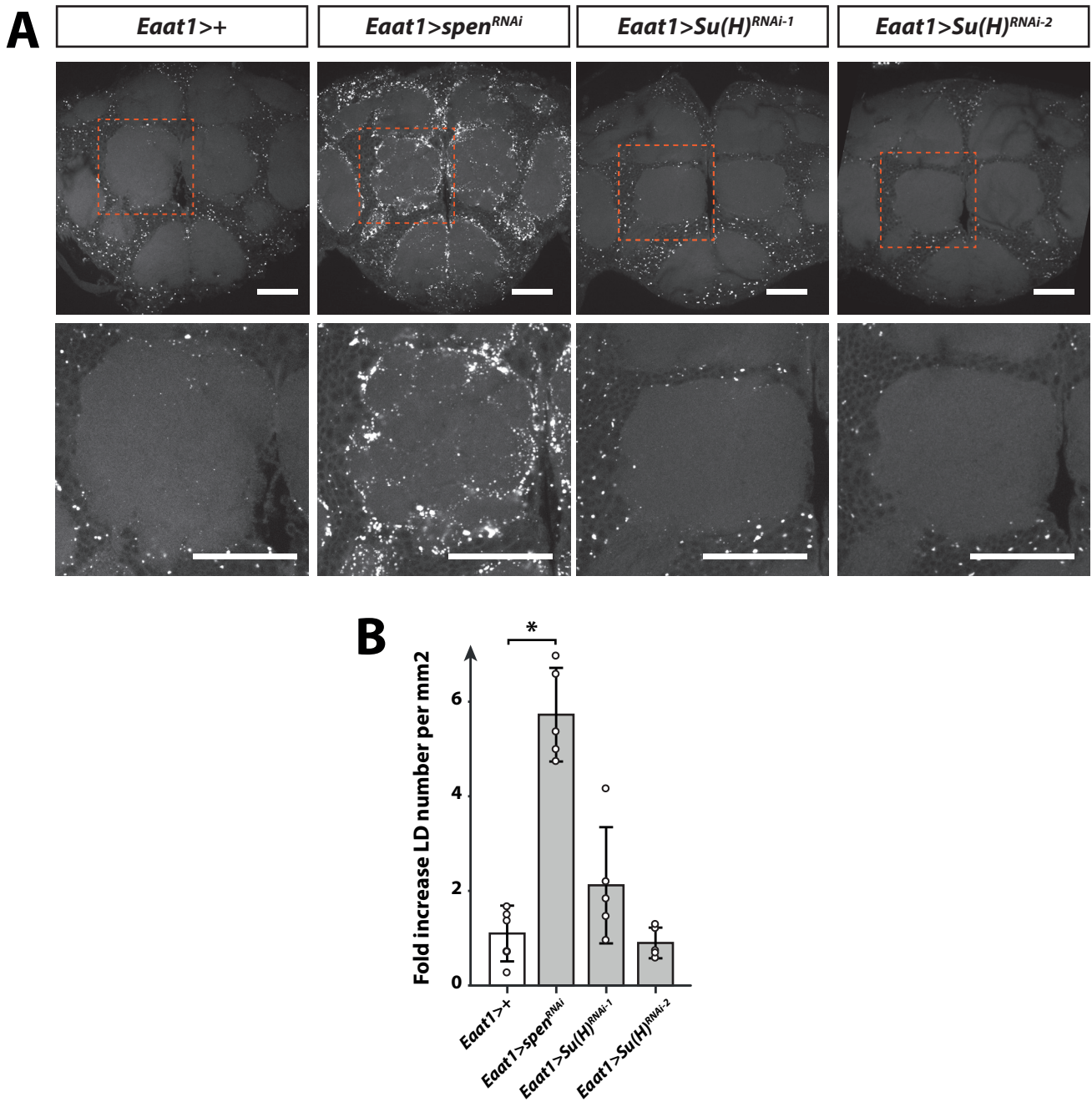


Figure S6. *Su(H)* knockdown do not modify glial cell lipid droplet in adult *Drosophila* brain.

(A) Lipid droplets labelled with BODIPY 493/503 (white dots) in whole-mount brain of control flies *Eaat1*>+ (*Eaat1*-GAL4/+;) and flies expressing *spen*^{RNAi} in glial cells *Eaat1*>*spen*^{RNAi} (*Eaat1*-GAL4/*UAS*-*spen*^{RNAi}) was compared to flies expressing two different *Su(H)*^{RNAi} (RNAi-1 : HMS05110 , RNAi-2: KK101550). As shown in the close-up, lipid droplets are accumulating in the neuropil area of the antennal lobe in *spen* knockdown but not in *Su(H)* knockdown. Scale bar: 25µm. **(B)** Quantification of BODIPY 493/503 labelled lipid droplets. Data are presented as the fold change in lipid droplets number (B) relative to control flies *Eaat1*>+ (*Eaat1*-GAL4/+;). n=5 brains per condition. Droplets were quantified using an automated ImageJ plugin described in the material and methods section. Non-parametric Kruskal-Wallis test, * P<0.05. Scale bar: 50µm.