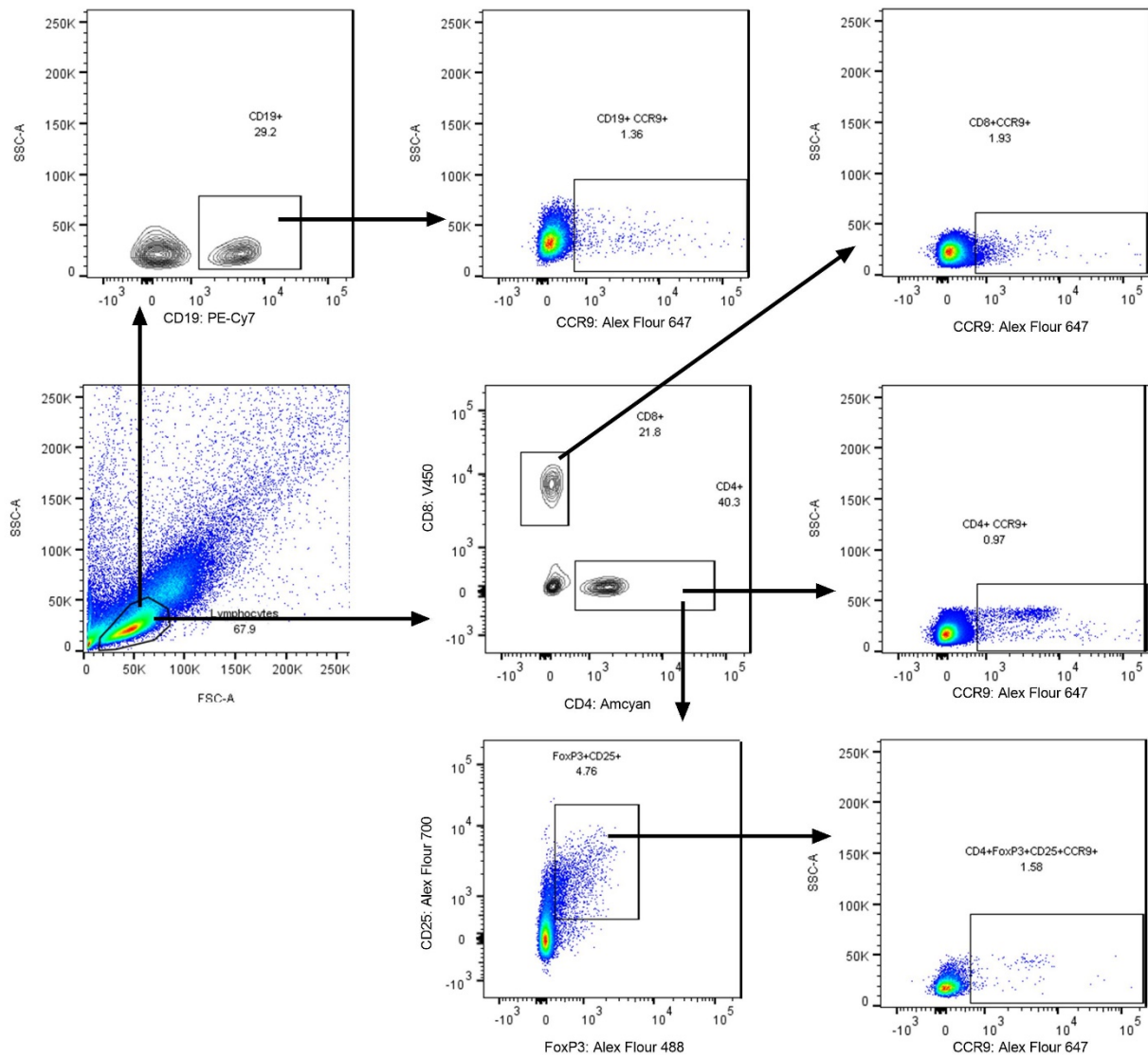


High-Dose Neonatal Vitamin A Supplementation to Bangladeshi Infants Increases the Percentage of CCR9-Positive Treg Cells in Infants with Lower Birthweight in Early Infancy, and Decreases Plasma sCD14 Concentration and the Prevalence of Vitamin A Deficiency at Two Years of Age. S.M. Ahmad.

Online Supplemental Material

Supplemental Table 1: P-values from mixed linear regression analysis (described in Methods section) assessing effect of vitamin A treatment group on child growth z-scores (weight-for-age, WAZ; length-for-age, LAZ; and weight-for-length, WLZ); plasma retinol, C-reactive protein (CRP) and soluble CD14 (sCD14); peripheral blood Treg cell percentage (Treg); and percentage of CD4 and CD8 T-cells, Treg cells and B cells expressing chemokine receptor 9 (CCR9).

Variable	WAZ	LAZ	WLZ	Retinol	CRP	sCD14	Treg	CCR9-CD4	CCR9-CD8	CCR9-Treg	CCR9-B
Main Effects											
Treatment Group	0.6318	0.3634	0.6768	0.0502	0.1769	0.0915	0.6507	0.4086	0.8512	0.5861	0.1761
Sex	0.4996	0.2581	0.8539	0.8442	0.5199	0.3867	0.1031	0.3626	0.4268	0.0004	0.0978
BWM Category	<0.0001	<0.0001	0.1813	0.0772	0.2573	0.8371	0.3848	0.7164	0.8135	0.4245	0.5441
Age of Visit	<0.0001	<0.0001	<0.0001	<0.0001	<0.0001	<0.0001	<0.0001	0.0004	<0.0001	0.8281	<0.0001
Delivery Type	0.7373	0.5754	0.7196	0.6243	0.4676	0.3062	0.8904	0.6240	0.2117	0.4209	0.3835
Month	0.0261	0.1274	0.1450	0.2394	0.8087	0.0034	<0.0001	<0.0001	0.0004	<0.0001	<0.0001
Interactions with Treatment Group											
Group*BWM	0.5203	0.0802	0.5206	0.4689	0.1626	0.3417	0.9671	0.0207	0.8282	0.0005	0.0622
Group*Sex	0.7418	0.9476	0.7636	0.5836	0.5651	0.9407	0.6005	0.5085	0.8982	0.3560	0.8921
Group*Age	0.3699	0.1399	0.4170	0.4874	0.4369	0.0269	0.8475	0.1480	0.2383	0.6077	0.1823
Group*BWM*Age	0.2293	0.0728	0.4158	0.1176	0.2635	0.3571	0.2724	0.9046	0.0693	0.8594	0.2729
Group*Sex*BWM	0.1672	0.4314	0.2749	0.0816	0.8807	0.7759	0.6065	0.5010	0.0450	0.9554	0.8212
Group*Sex*Age	0.5762	0.5232	0.2970	0.2732	0.6362	0.2380	0.0719	0.5808	0.5496	0.2398	0.5634
Group* Sex*BWM*Age	0.0011	0.4525	0.0259	0.1631	0.9241	0.3723	0.4277	0.1288	0.6746	0.5454	0.2177
Other Interactions											
BWM*Age	0.1000	0.0039	0.0032	0.2478	0.6564	0.9624	0.3625	0.5615	0.1624	0.7525	0.9744
Sex*BWM	0.0180	0.8080	0.0079	0.5296	0.9937	0.7716	0.8045	0.3459	0.6115	0.1305	0.5739
Sex*Age	0.1409	0.0126	0.8304	0.1583	0.7535	0.0286	0.0054	0.9327	0.5232	0.6687	0.5533
Sex* BWM*Age	0.1868	0.8506	0.2119	0.8592	0.8682	0.8024	0.0767	0.9151	0.3810	0.4299	0.0347
Delivery Type*Age	0.7838	0.4445	0.2157	0.0730	0.0907	0.6782	0.0025	0.7478	0.0184	0.1903	0.6986
Month*Age	0.0136	0.0567	0.0031	0.0032	0.7840	0.5575	0.0566	0.0112	0.2185	0.0003	0.9695



Supplemental Figure 1: Flow cytometric analysis of mucosa targeting B and T-cells. PBMC was isolated from obtained blood was stained with CD4, CD8, CD19, CD25, CCR9 and FoxP3 markers and analyzed by flow-cytometry.