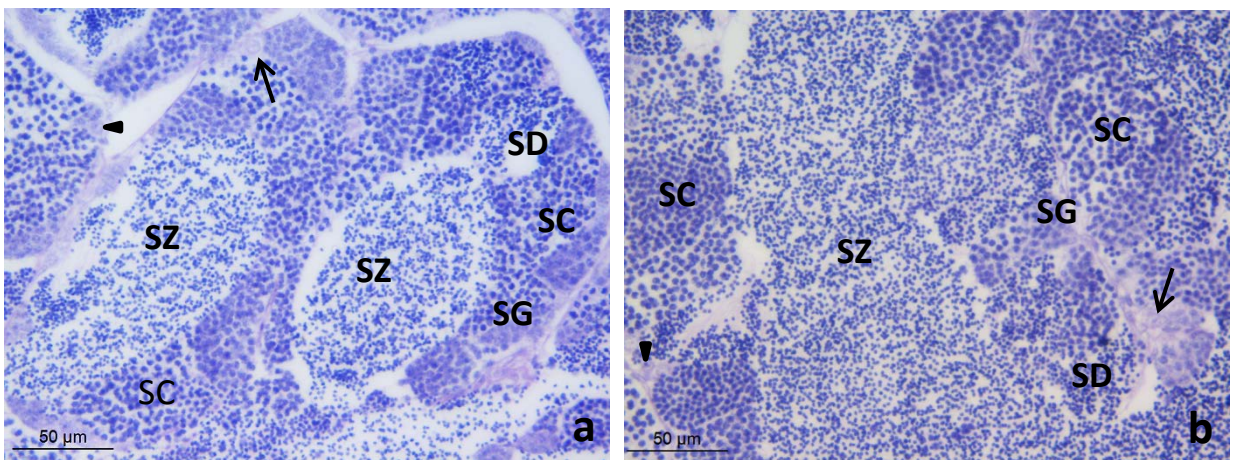


17 α -ethynylestradiol prevents the natural male-to-female sex change in gilthead seabream (*Sparus aurata* L.)

M. Pilar García Hernández^{1*}, Isabel Cabas¹, M. Carmen Rodenas¹, Marta Arizcun²
Elena Chaves-Pozo², Deborah M. Power³, Alfonsa García Ayala¹

Supplementary data:



a-b. Gonads of male gilthead seabream fed with 0 (control, **a**) or 5 (**b**) μg of EE_2/g of food for 28 days followed by a recovery period of 333 days of feeding with a standard diet. Both specimen show testis at the spermatogenesis stage with tubules consisting of spermatogonia stem cells (\uparrow), primary spermatogonia (\downarrow) and cysts of spermatogonia (SG), spermatocytes (SC) and spermatids (SD) and plenty of spermatozoa (SZ) in the lumen. H-E.