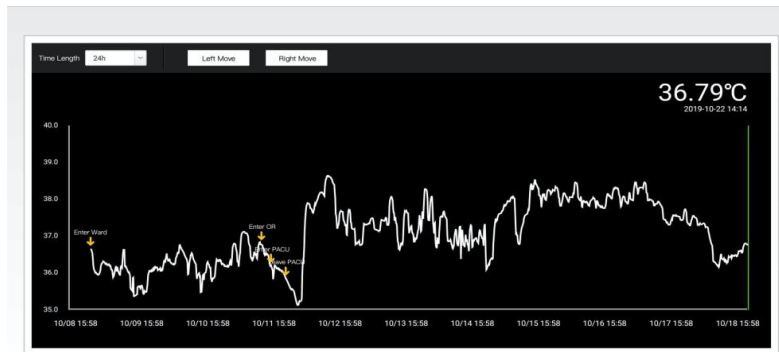
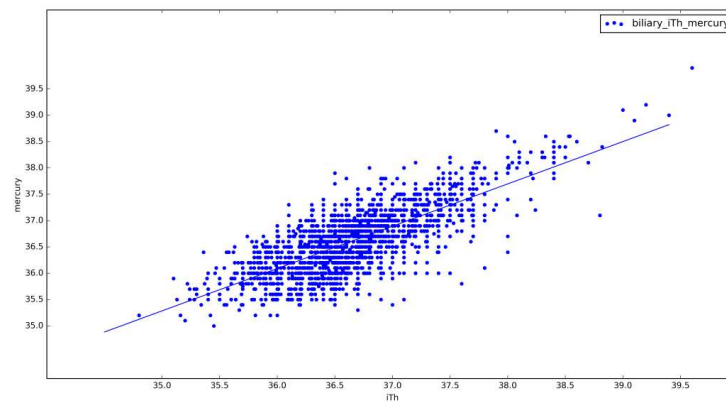


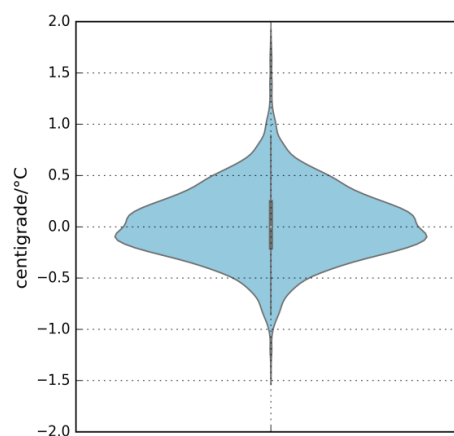
## Supplementary Materials



**Appendix figure 1** The temperature curve with time stamps across different clinical scenarios.



**Appendix figure 2** Scatter plot of iThermometer<sup>®</sup> axillary temperatures (x-axis) against mercury thermometer temperatures (y-axis). Pearson's correlation coefficient  $r=0.755$ ,  $P<0.001$ .



**Appendix figure 3** Distribution of the difference of axillary temperatures, calculated by iThermometer<sup>®</sup> minus mercury thermometer.

**Appendix table 1** The questionnaire to evaluate the feasibility of the iThermonitor®  
(N=109)

Selections	Score	Patients` Options (%)
I felt very uncomfortable and could not bear to wear it.	1	0 (0)
I felt slight discomfort, but it's tolerable.	2	21 (19.3)
I didn't have noticeable feelings of wearing it.	3	81 (74.3)
I felt comfortable with it.	4	6 (5.5)
I felt very comfortable with it.	5	1 (0.9)