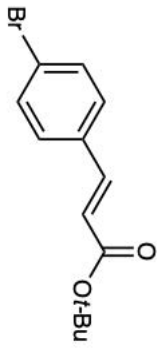
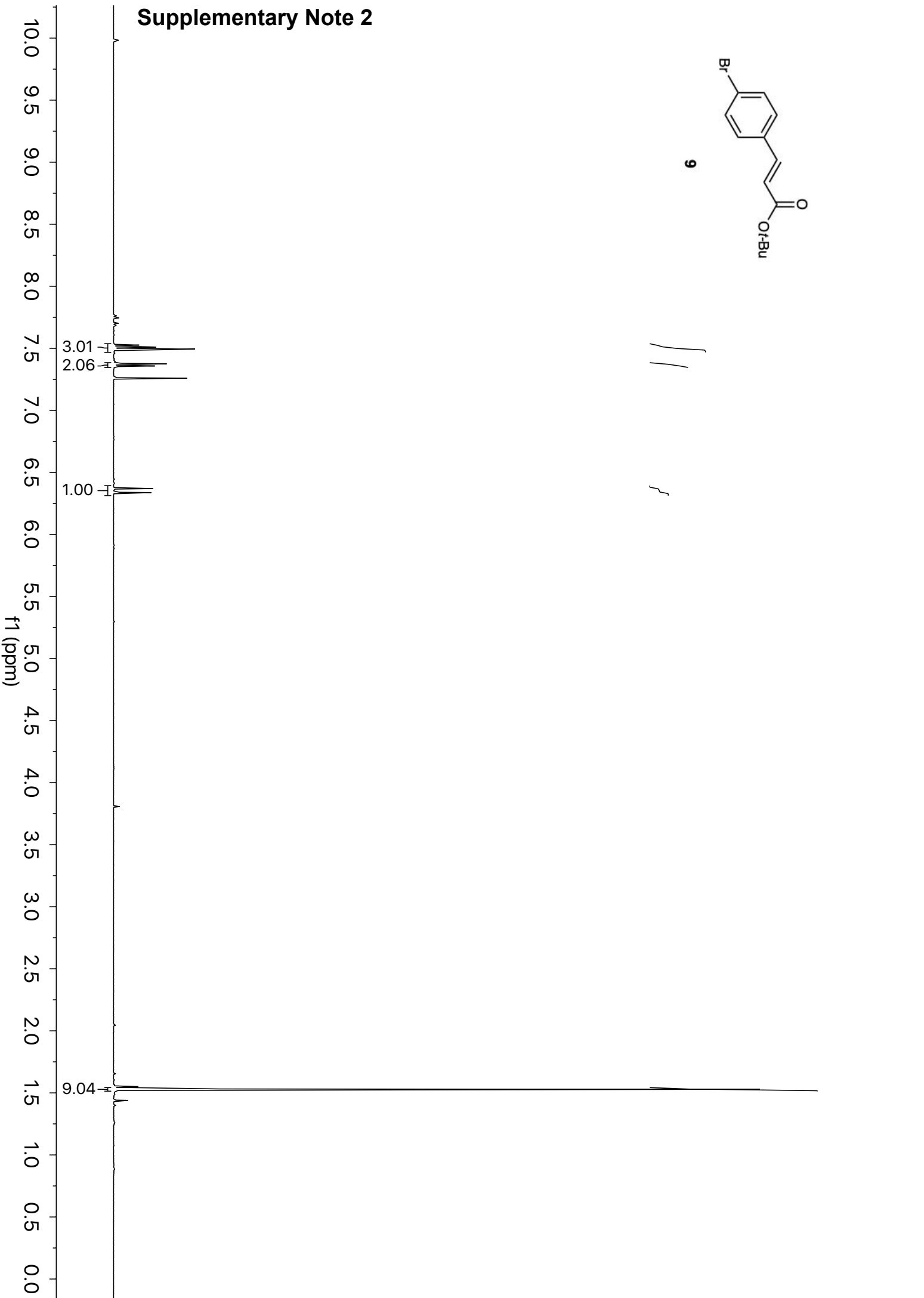
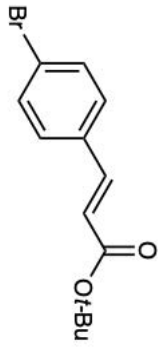


Supplementary Note 2

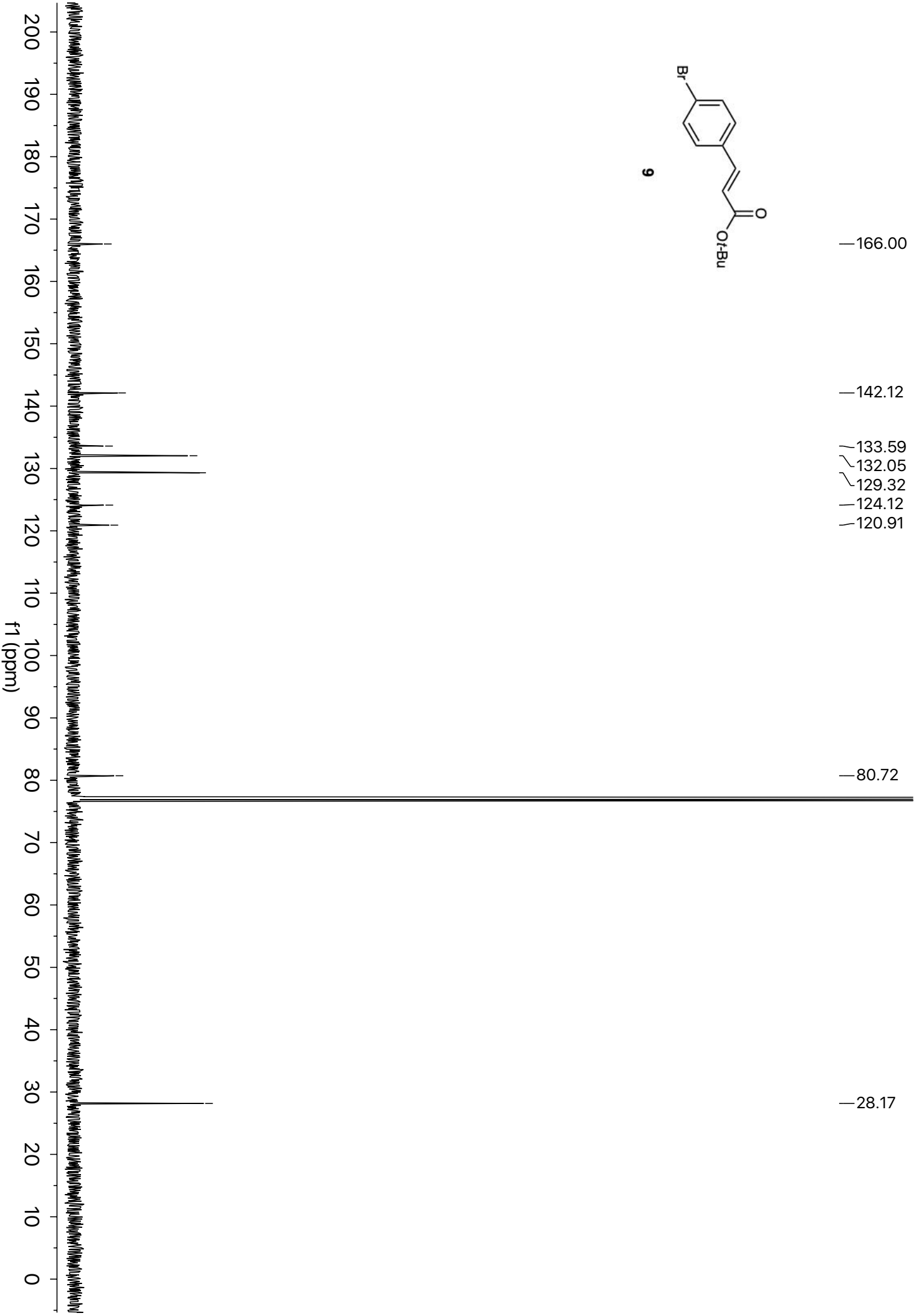


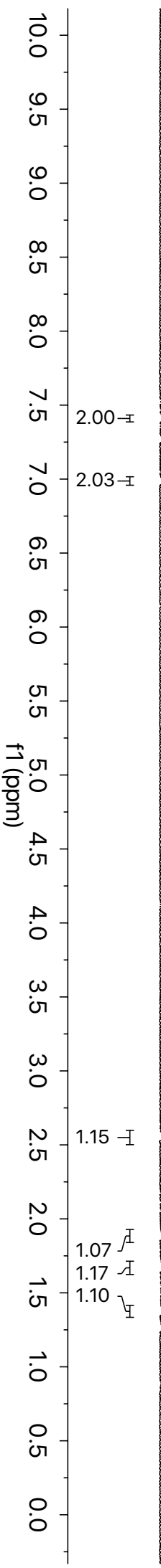
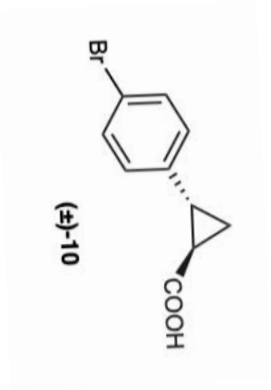
9

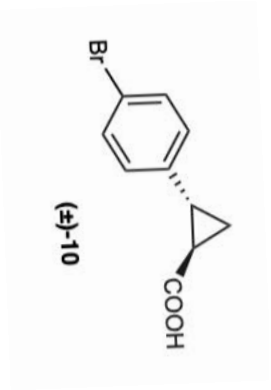




9







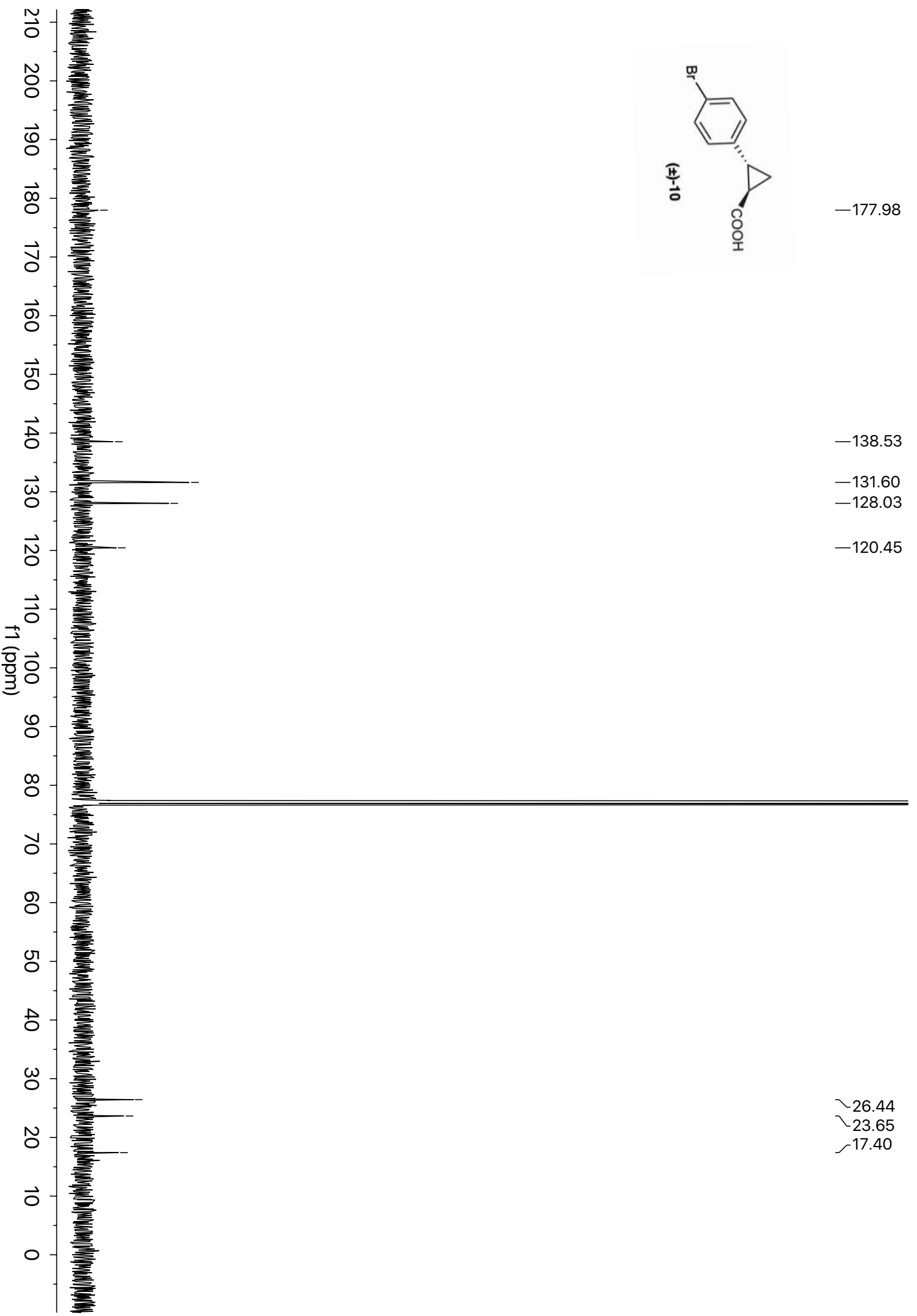
—177.98

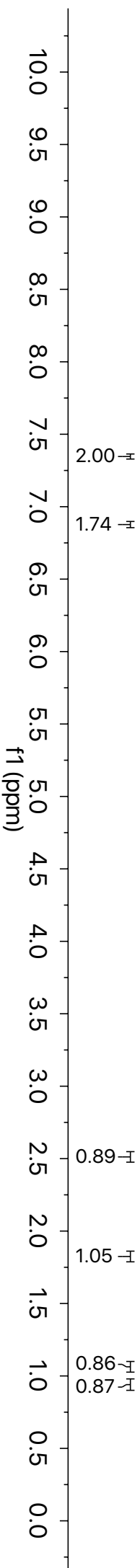
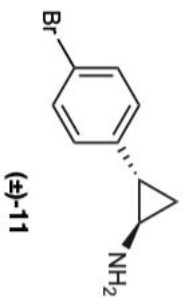
—138.53

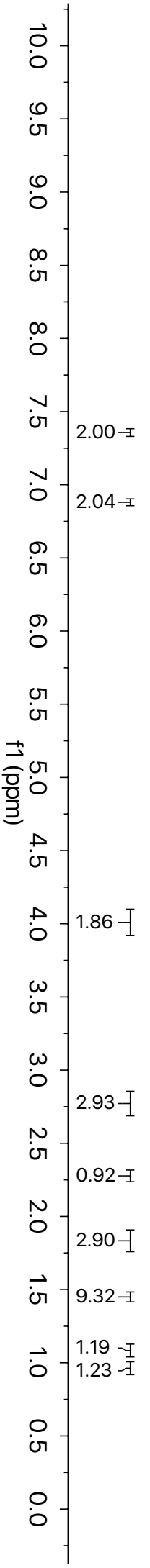
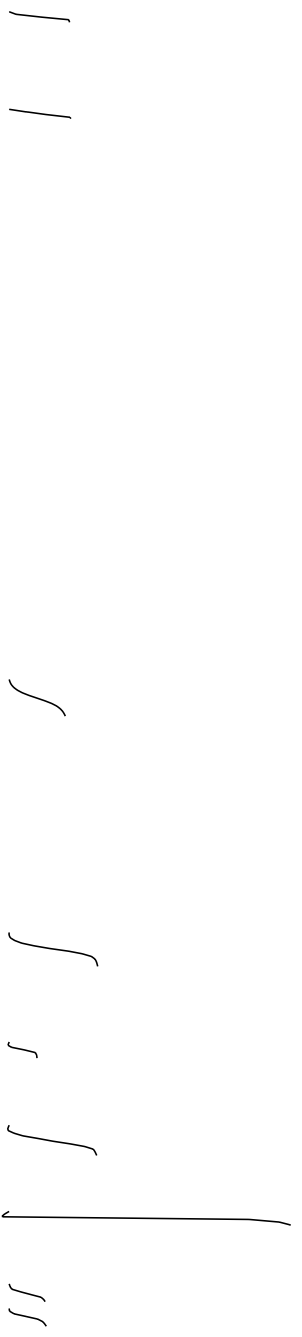
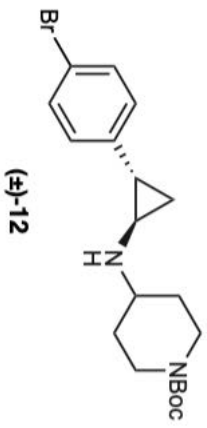
—131.60

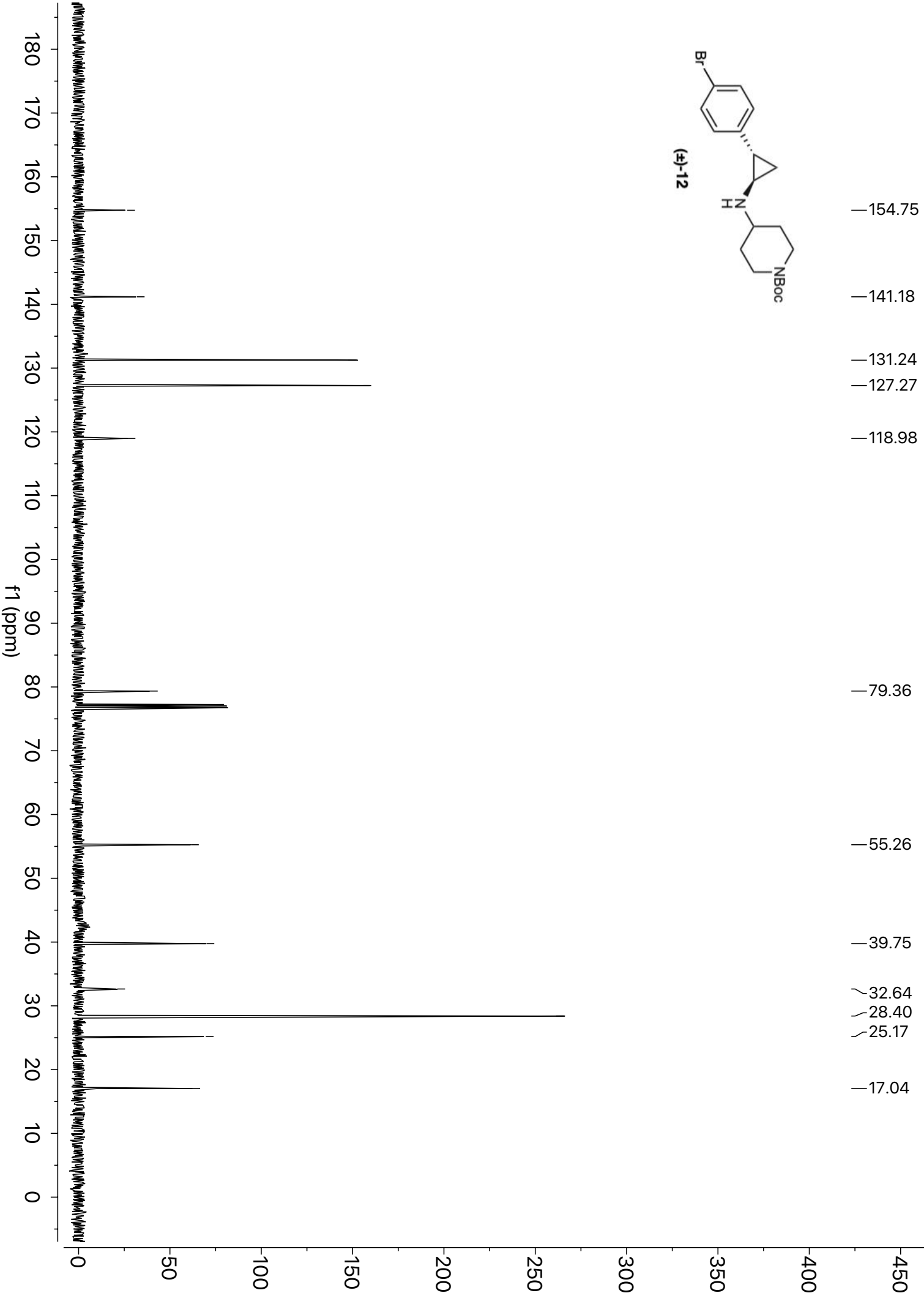
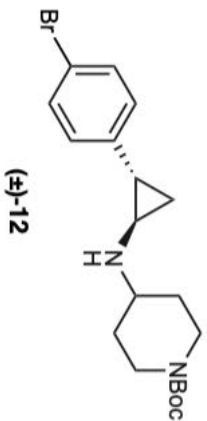
—128.03

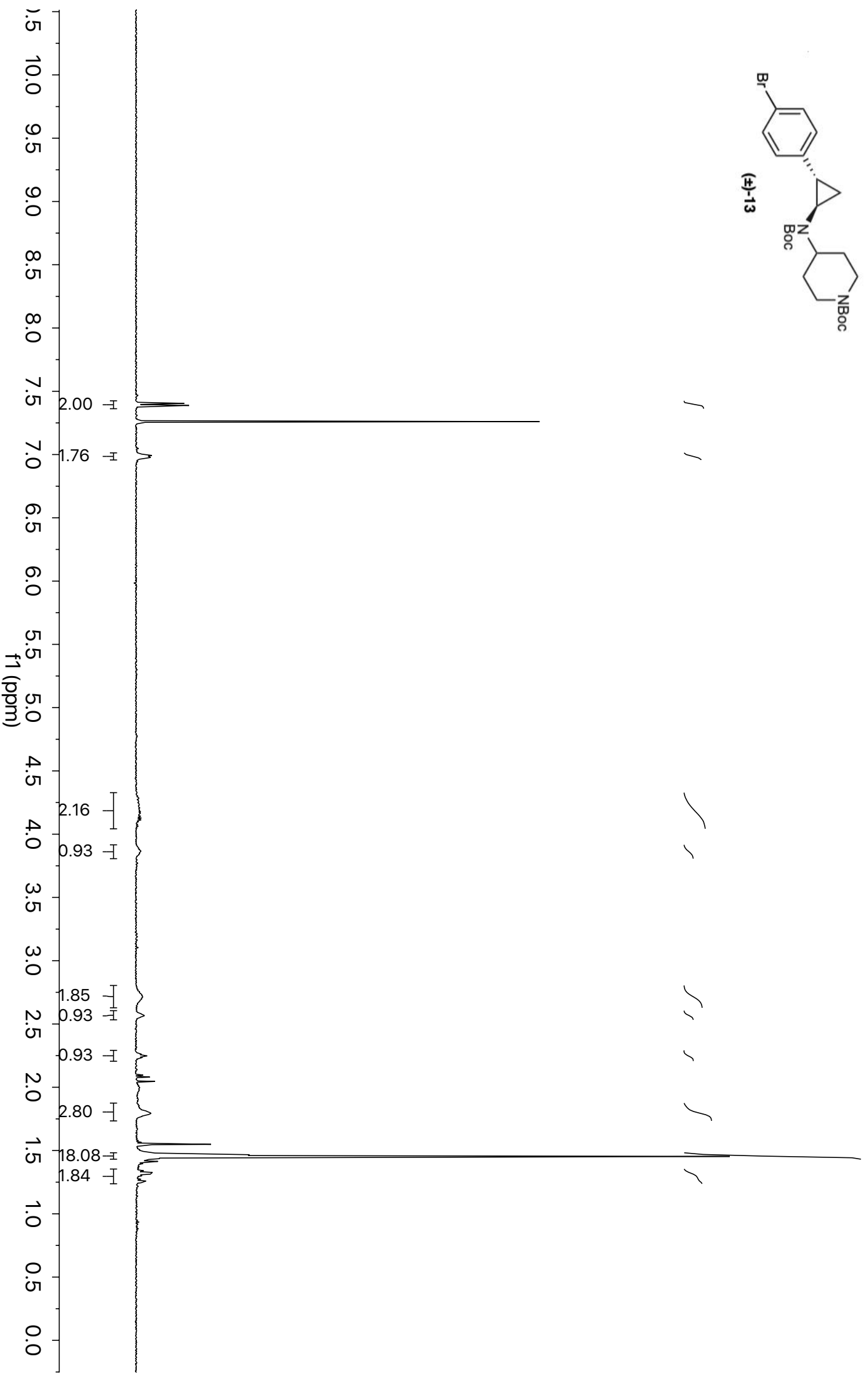
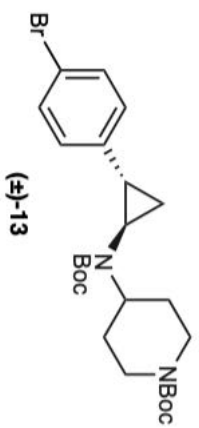
—120.45

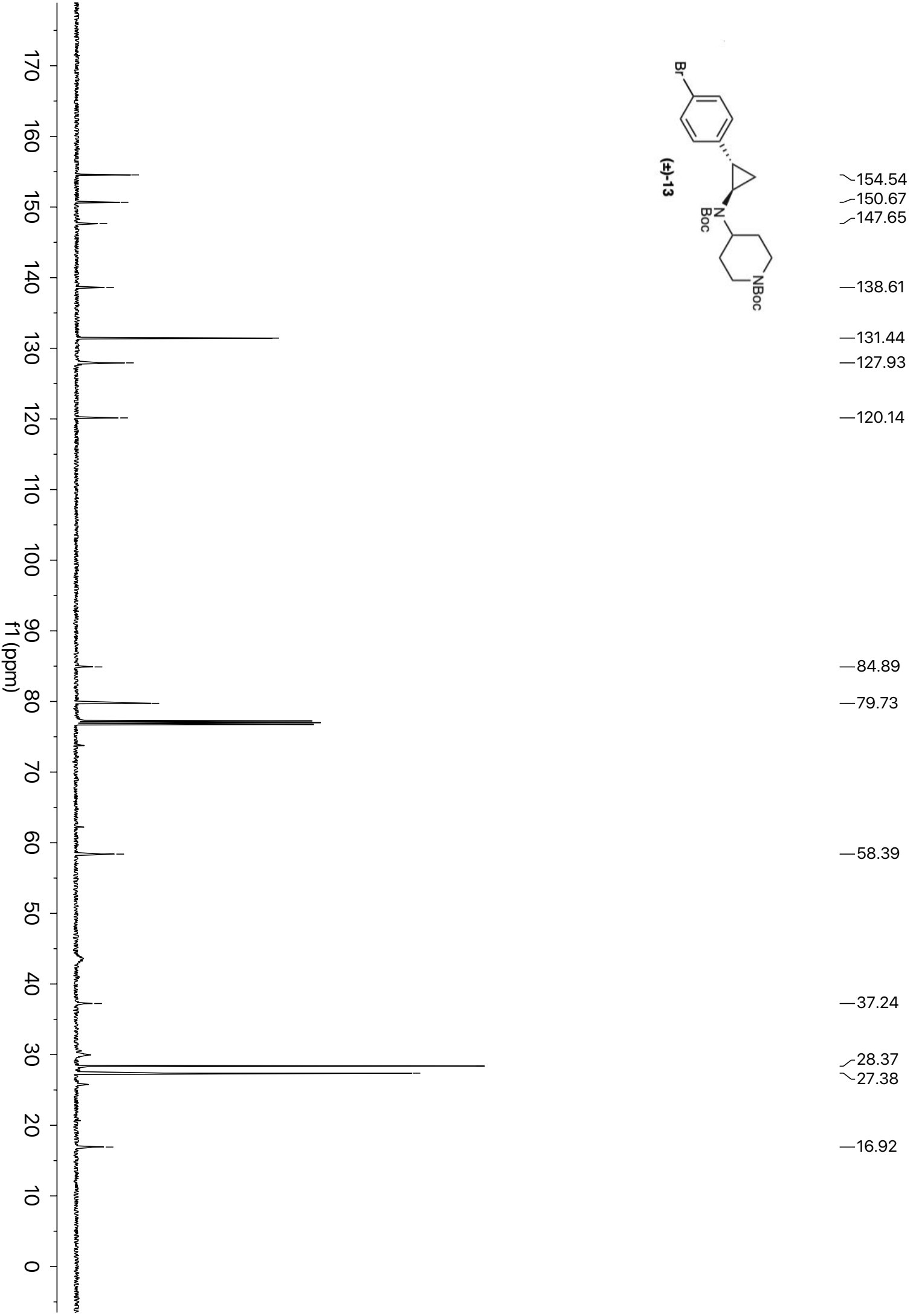
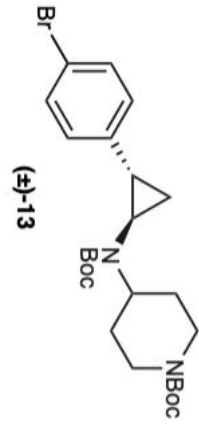


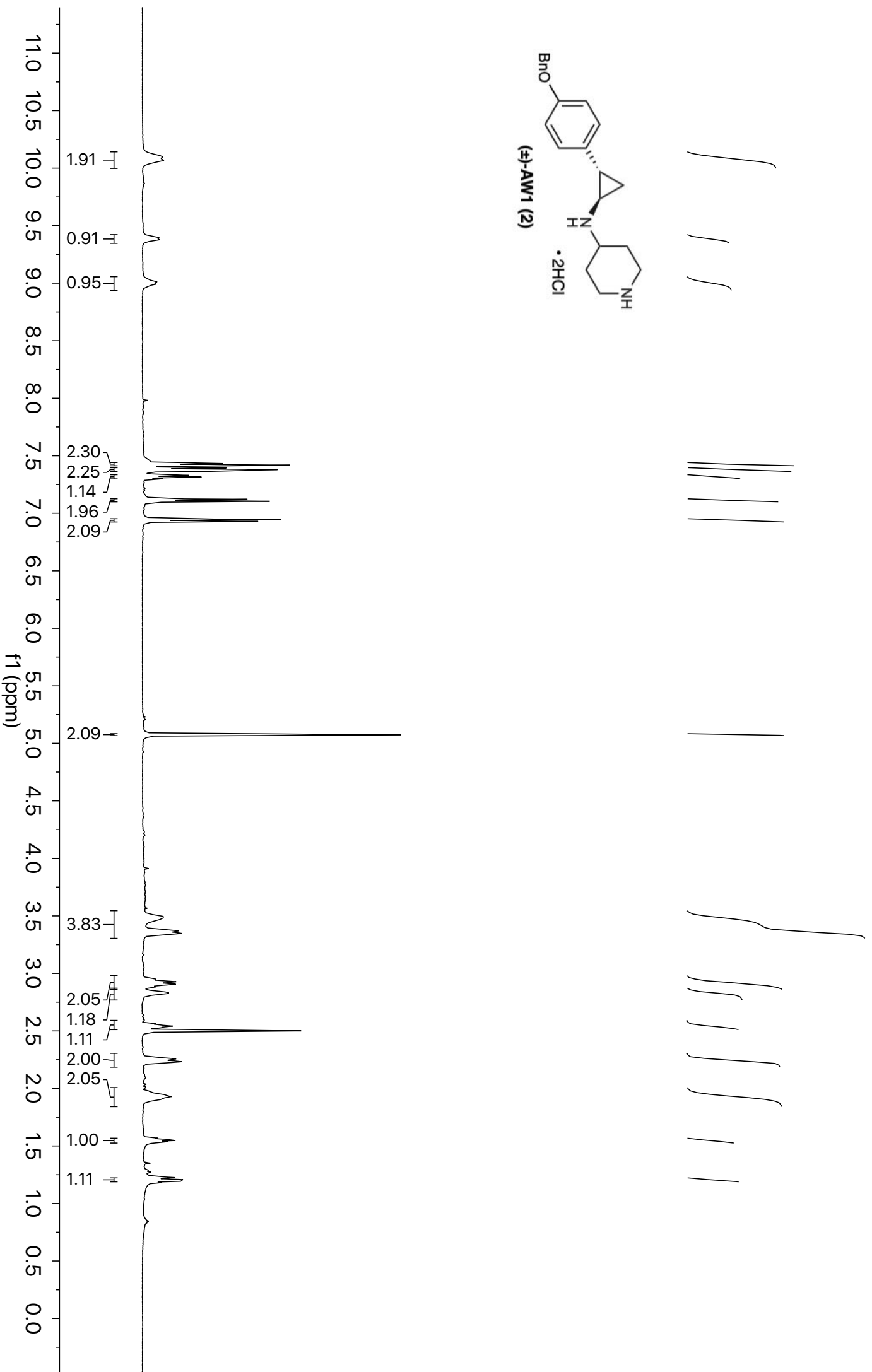
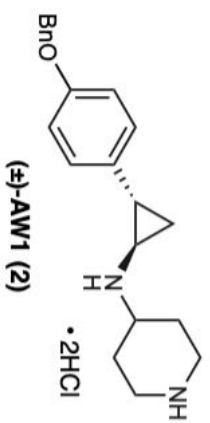


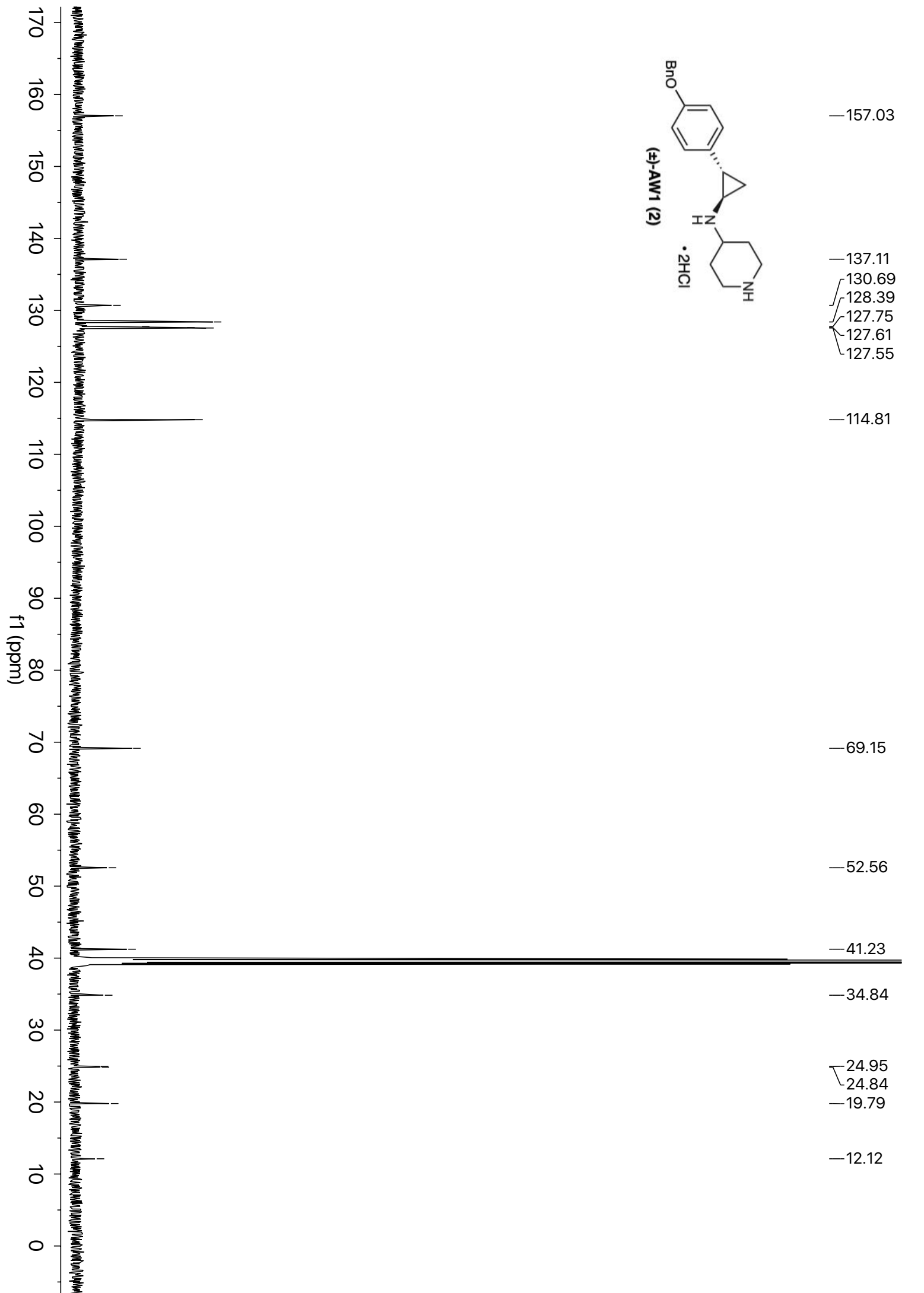


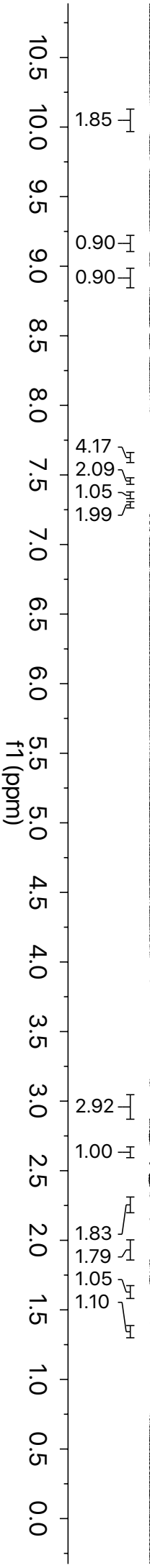
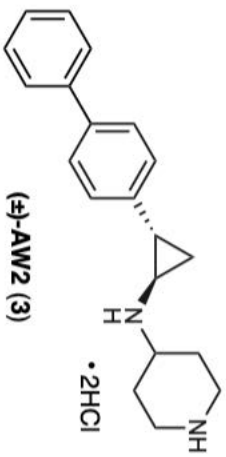


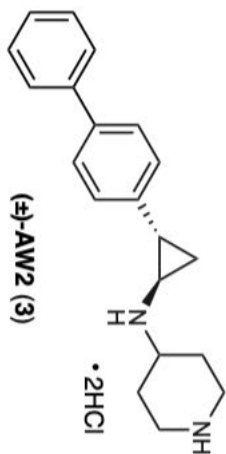












139.71
138.39
137.95
128.91
127.33
126.95
126.71
126.47

—52.63

—41.34

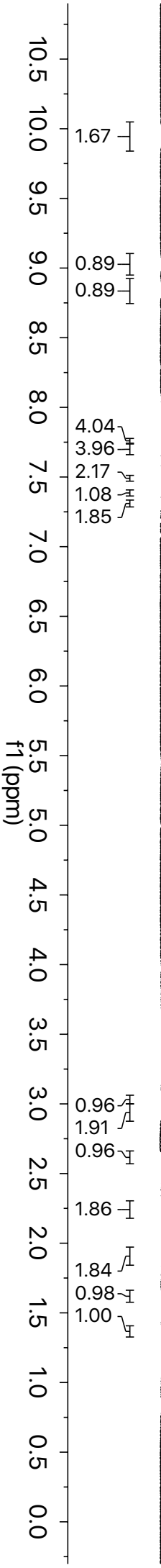
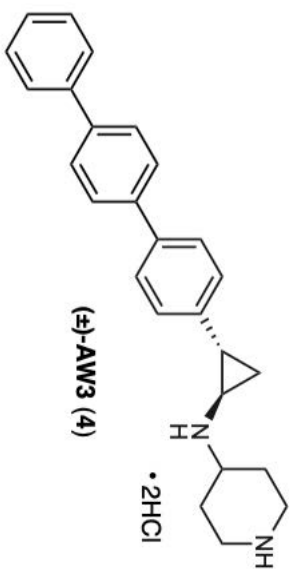
—35.11

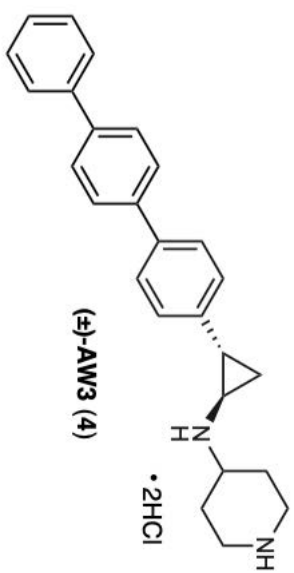
—25.04

—20.25

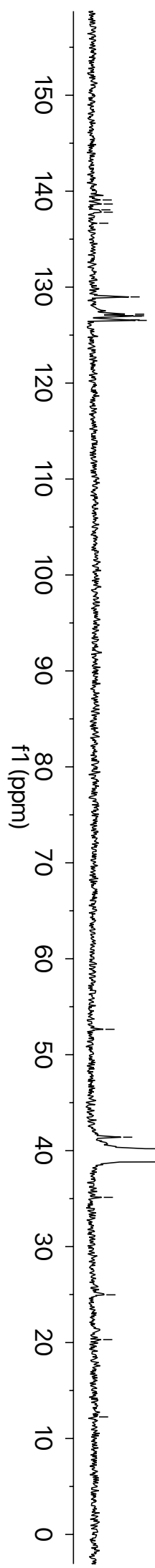
—12.69



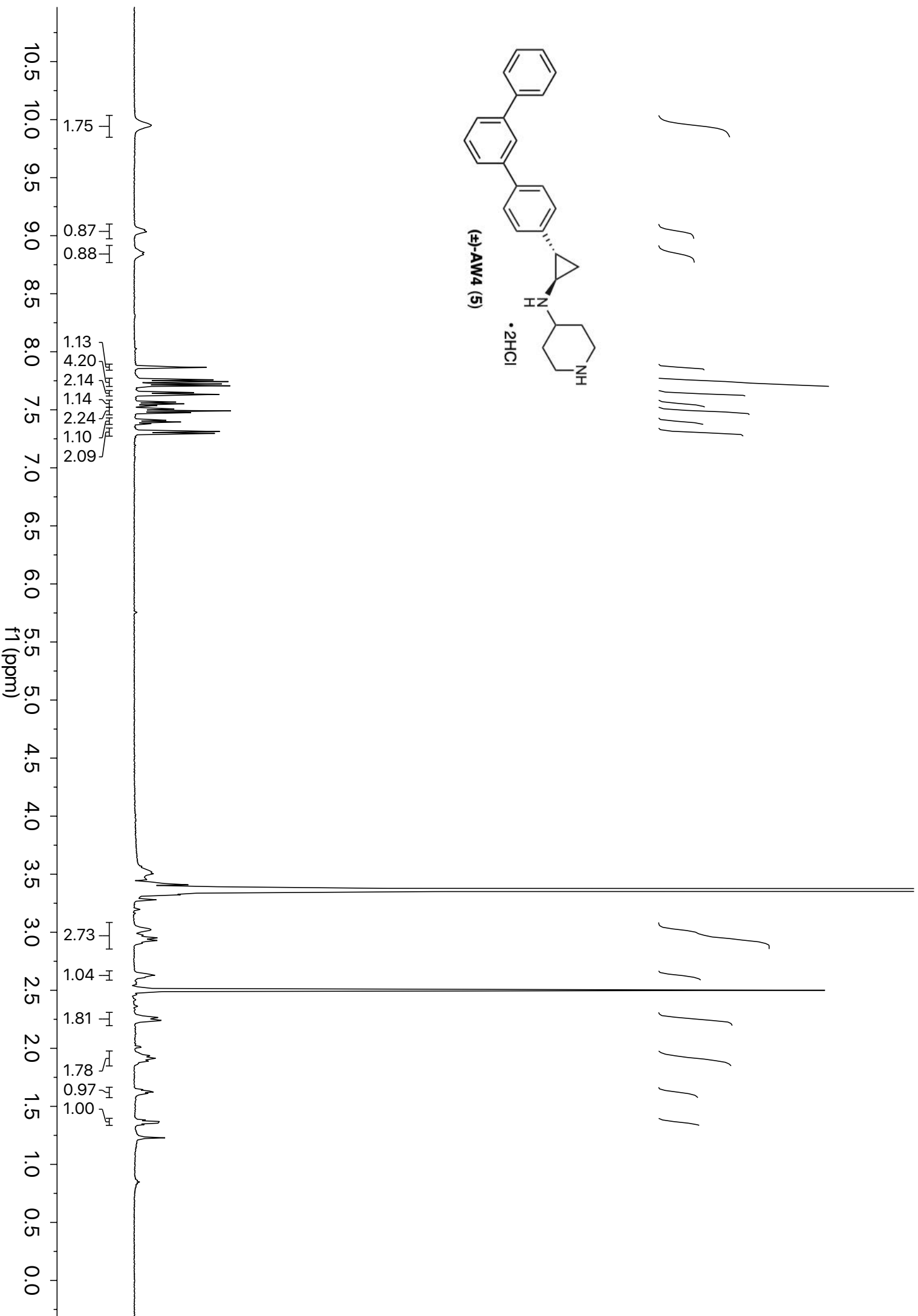
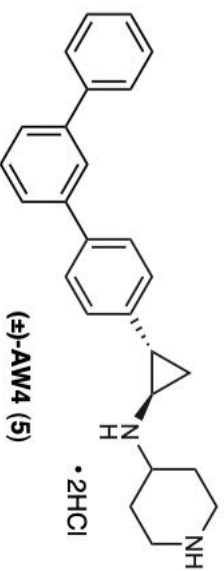


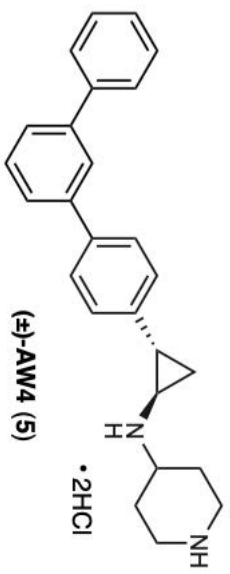


- 139.08
- 138.66
- 138.06
- 137.81
- 136.66
- 128.98
- 127.18
- 127.01
- 126.97
- 126.59
- 126.53

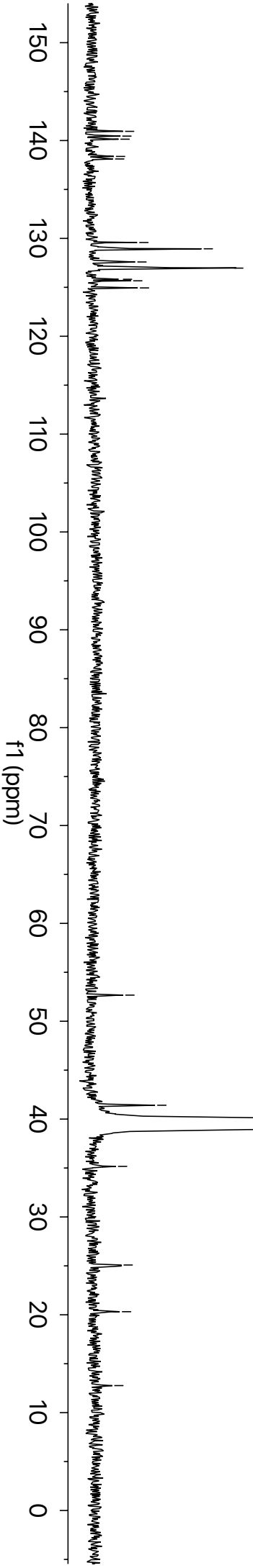


- 52.65
- 41.40
- 35.13
- 24.98
- 20.31
- 12.25

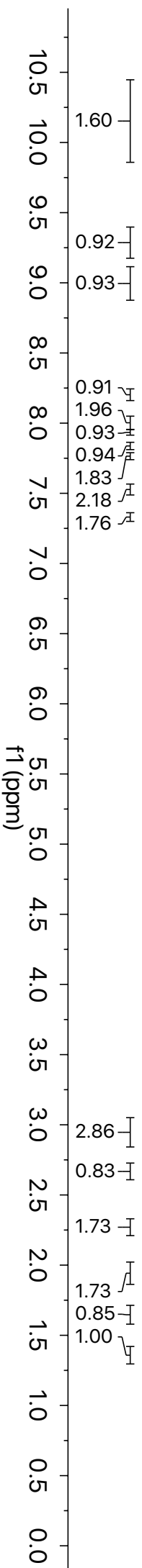
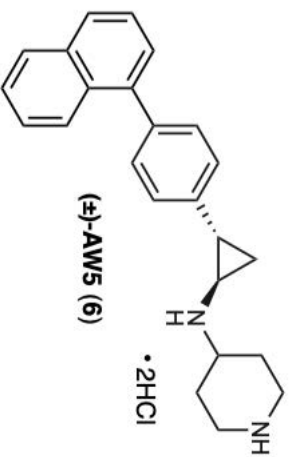


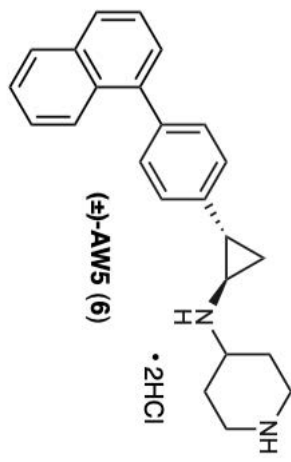


- 140.94
- 140.45
- 140.14
- 138.38
- 138.12
- 129.58
- 128.94
- 127.59
- 126.96
- 125.82
- 125.67
- 124.94

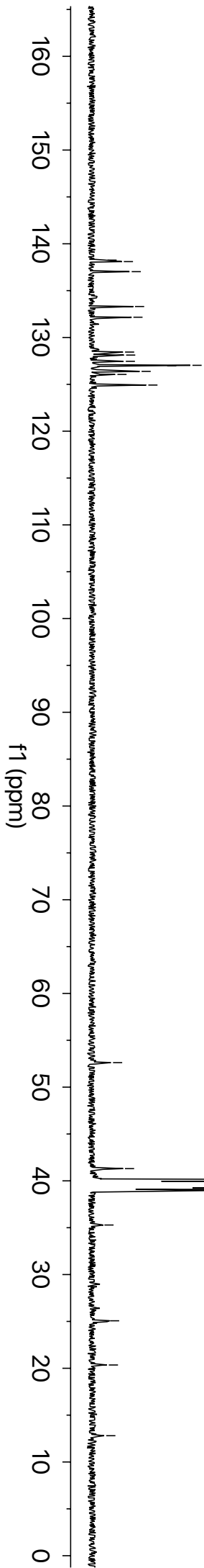


- 52.67
- 41.41
- 35.17
- 25.09
- 20.32
- 12.77





138.25
138.10
137.02
133.30
132.16
128.44
128.12
127.46
127.03
126.98
126.39
126.06
124.92



—52.62

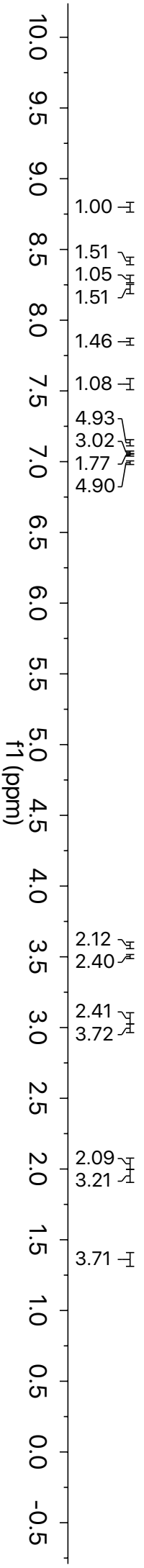
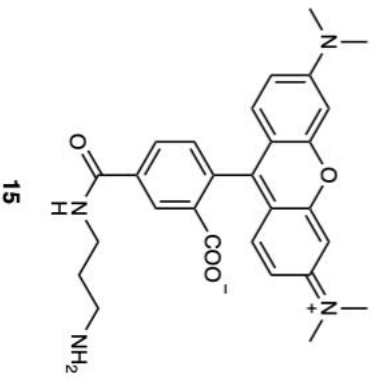
—41.30

—35.29

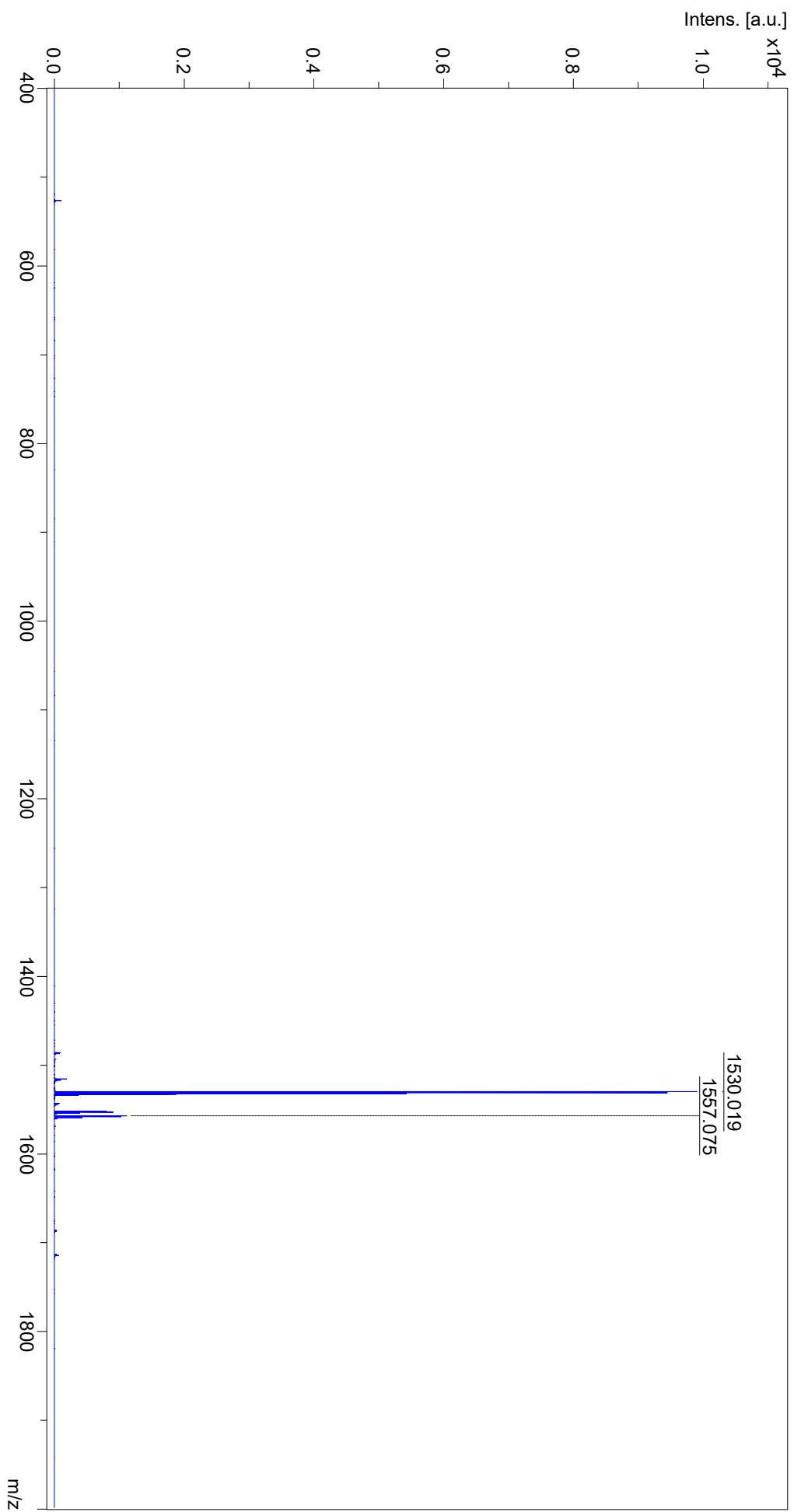
—25.07

—20.35

—12.80



TAMRA-labeled GF1B wt



TAMRA-labeled GF11B-F5A

