

Figure S1. Construction of pcTERT-melittin vector was detected with agarose gel electrophoresis and gene sequencing. (A) pcTERT-melittin vector was digested with restriction endonucleases, and the fragment of melittin was identified at 100 bp, as expected. (B) Nucleotide sequence of pcTERT-melittin was analyzed by Sangon Biotech Co., Ltd., and the sequence of melittin was found in the vector with correct reading frames. TERT, telomerase reverse transcriptase.

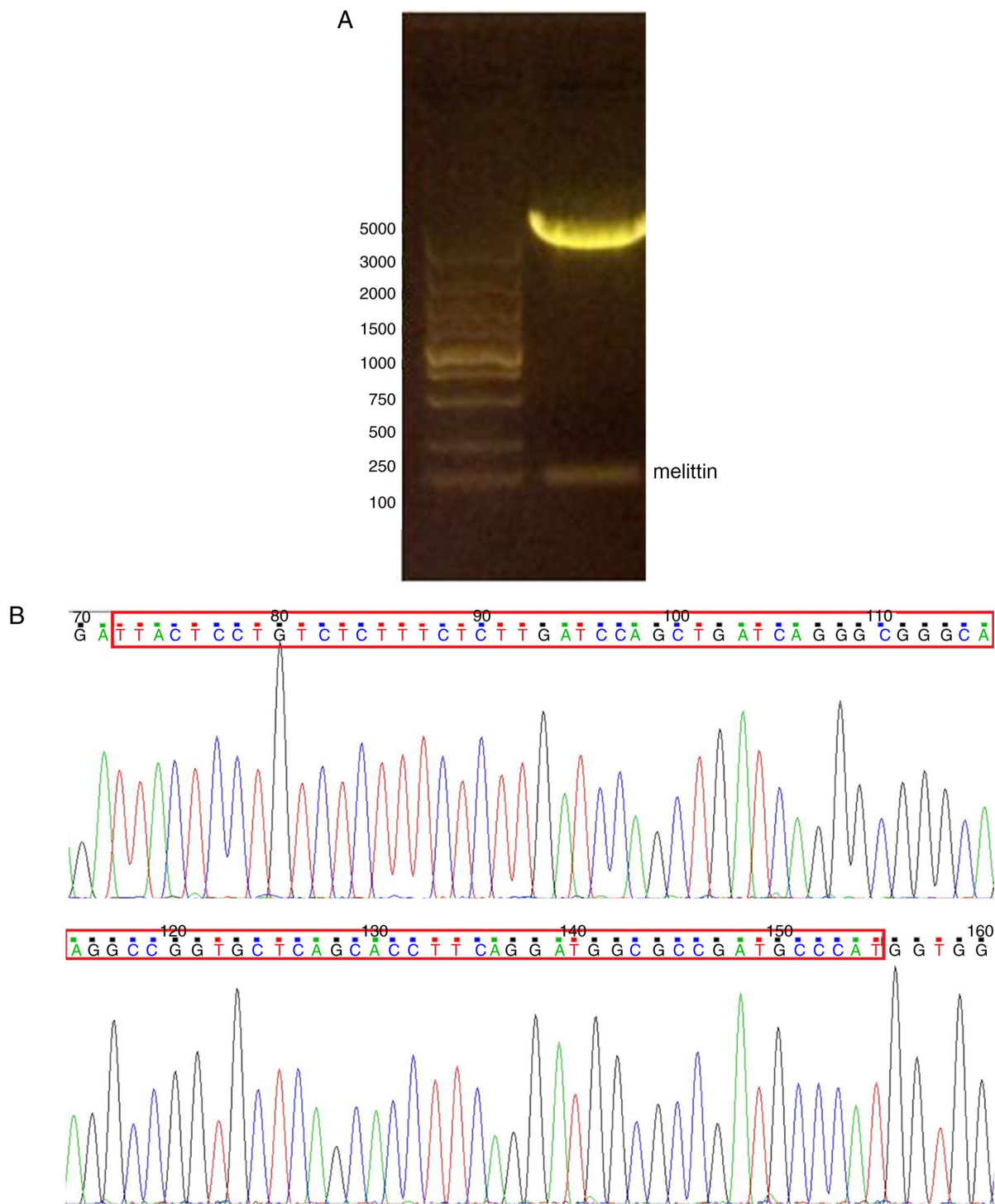


Figure S2. Relative expression of Mel was detected using RT-qPCR. TE1 and Het-1a cells were transfected with pcTERT-Mel for 48 h, total RNA were extracted and relative expression of melittin was analyzed via RT-qPCR using the same primer pair. (A) RT-qPCR was performed to detect mRNA expression of melittin. (B) RT-qPCR products were analyzed with agarose gel electrophoresis. M:DL2000 marker; lane 1: Het-1a cells transfected with pcTERT; lane 2: Het-1a cells transfected with pcTERT-melittin; lane 3: TE1 cells transfected with pcTERT; and lane 4: TE1 cells transfected with pcTERT-melittin. RT-qPCR, reverse transcription-quantitative PCR; TERT, telomerase reverse transcriptase; Con, control; Mel, melittin.

