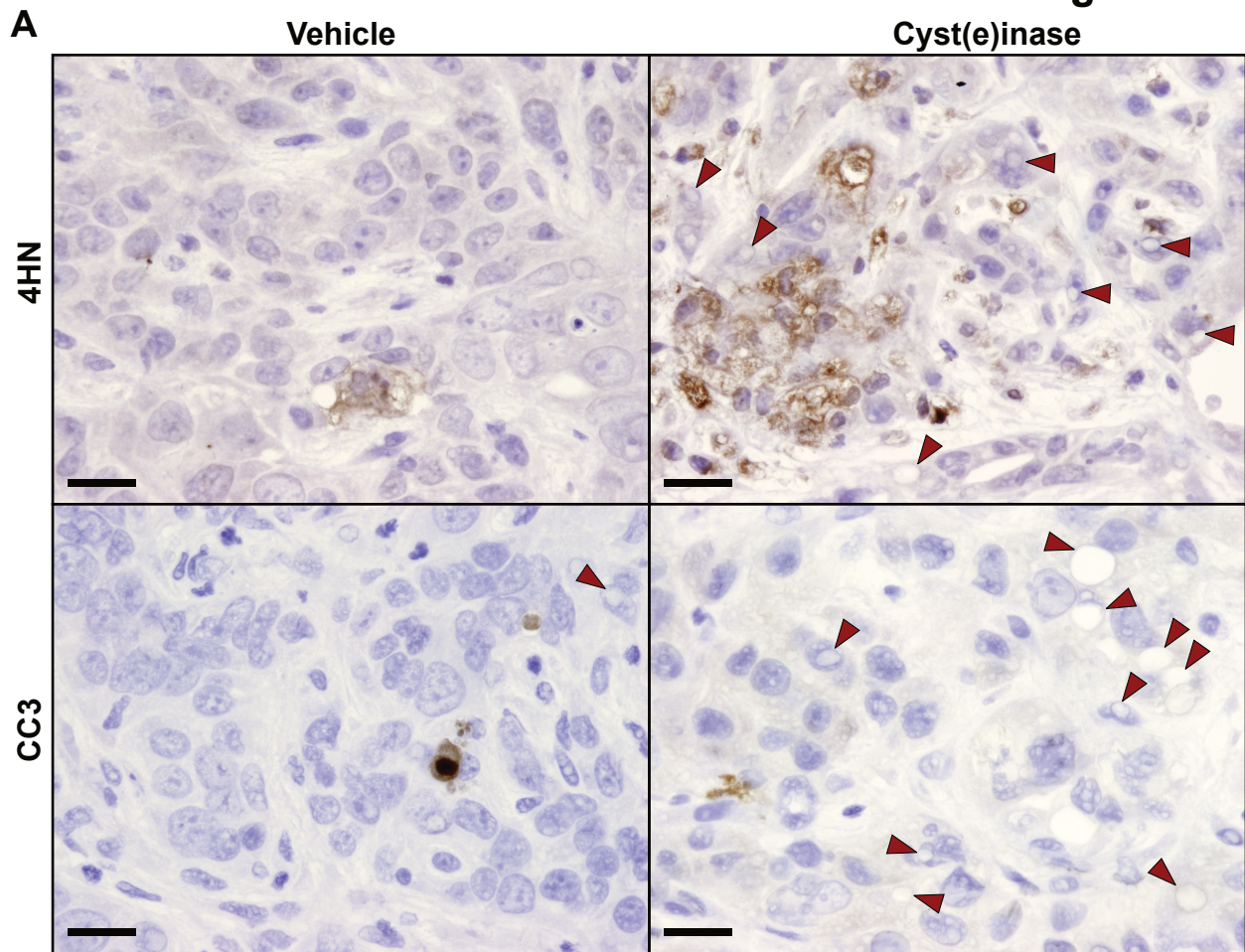


**Figure S13**



**Fig. S13. Response of KPC tumors to cyst(e)inase.** (A) Immunohistochemistry for 4-hydroxynonenal and cleaved caspase 3 from representative KPC pancreatic tumors treated with vehicle or cyst(e)inase in the 10-day short term response study. Red arrows indicate lipid droplets.