

(a) *tua1* mRNA

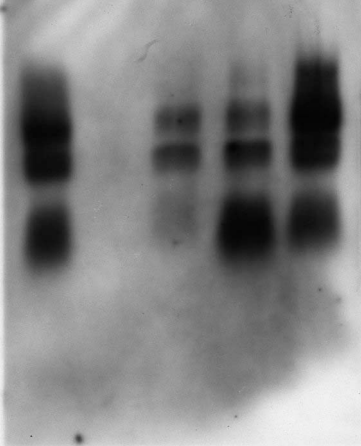
wild type

tua1-A

tua2-A

tua2-B

tua2-C



メチレンブルー

WT #30 #52 #65

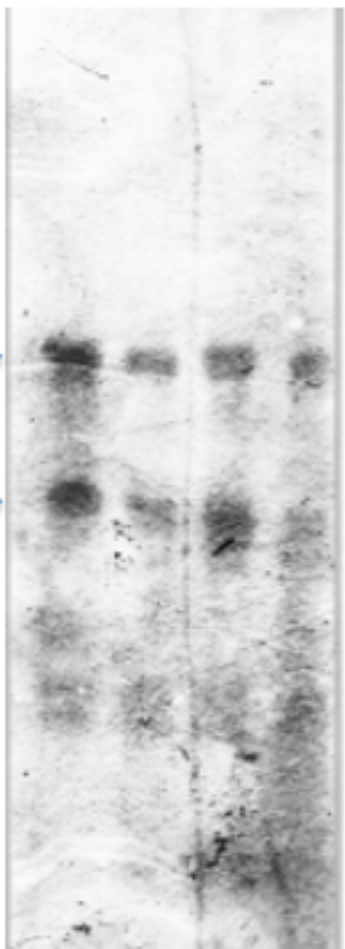
tua1

WT #30 #52 #65

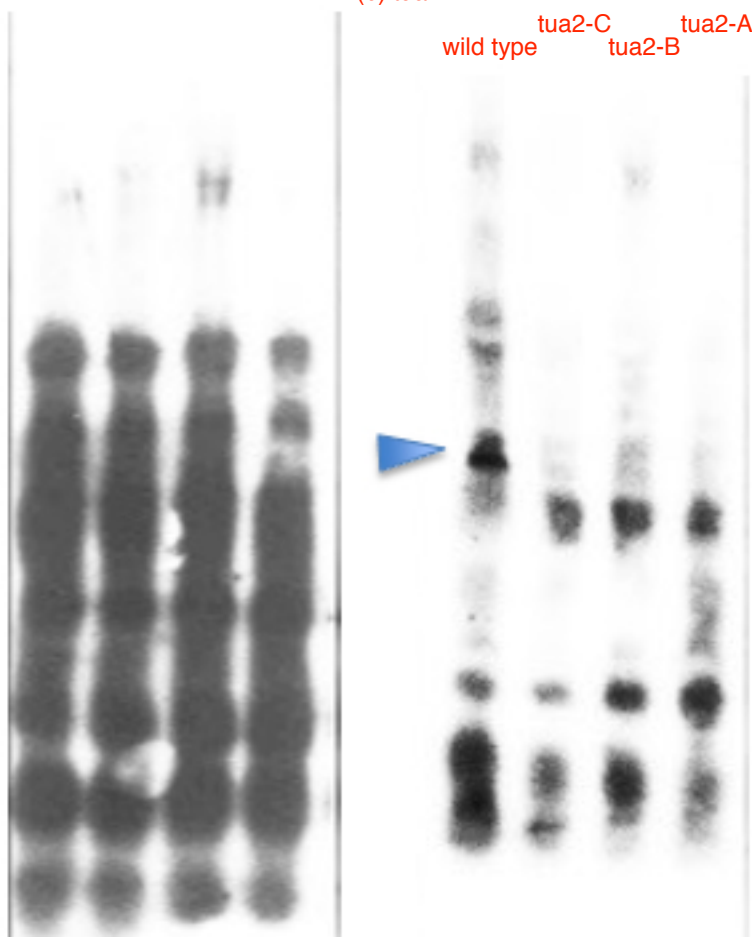
tua2

WT #30 #52 #65

28S rRNA ★
18S rRNA ★



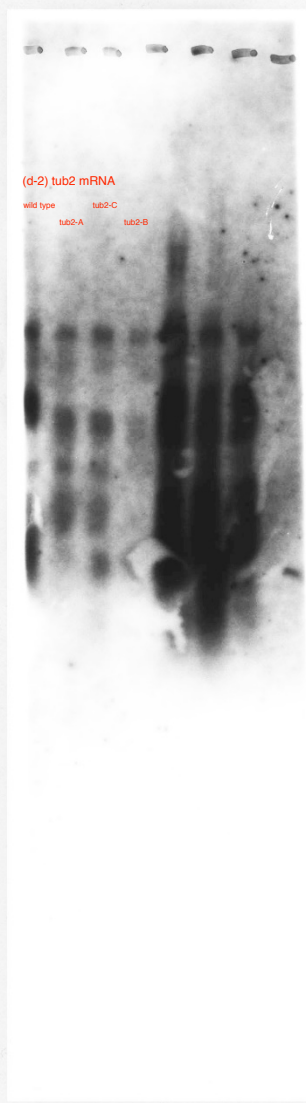
(b) *tua2* mRNA
wild type *tua2-C* *tua2-B* *tua2-A*





③

B1



④

B2

(d-1) tub2 mRNA

wild type

tub1-B

tub1-A

