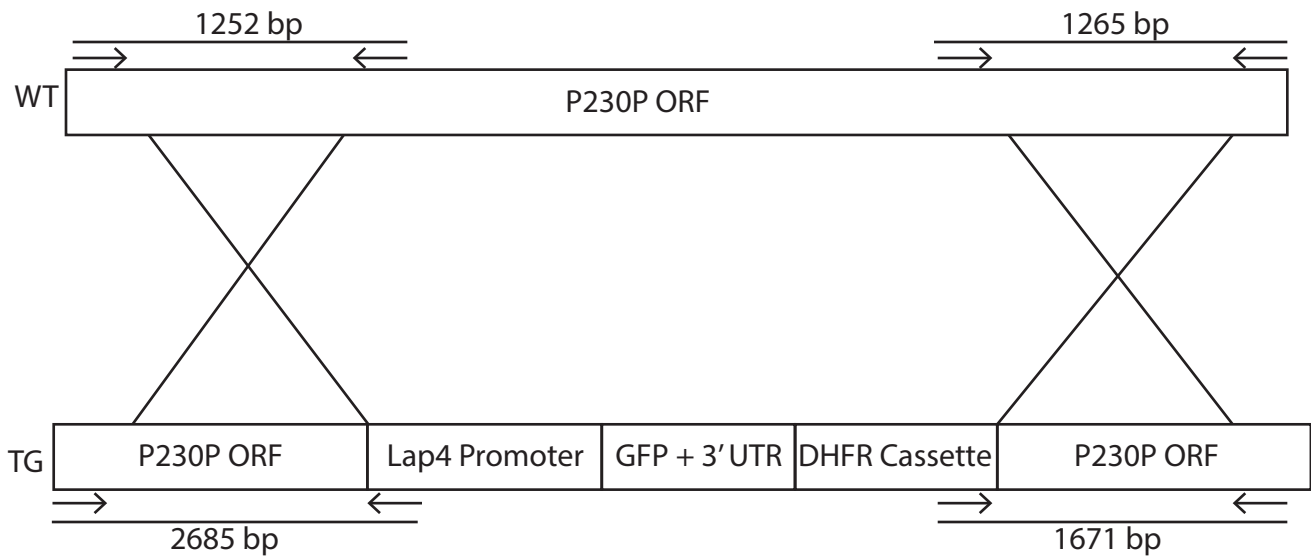
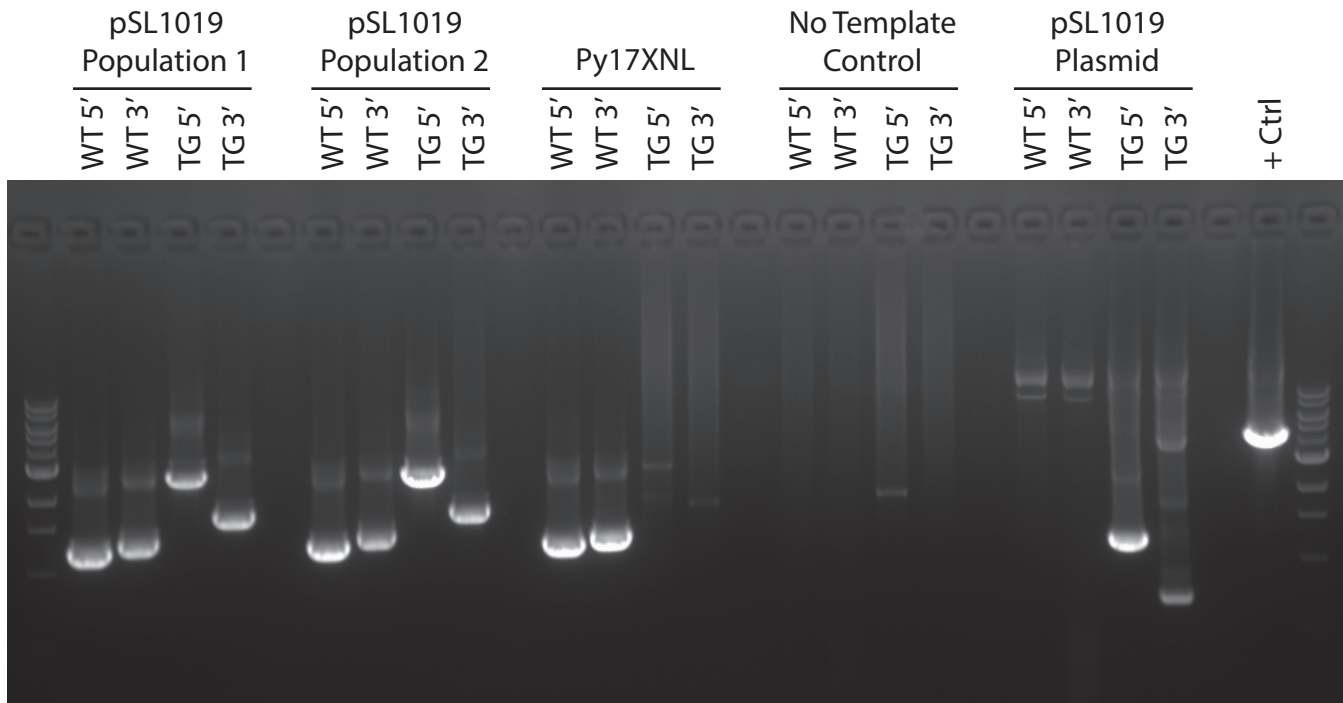


Additional File 5 - Bowman and Finger *et al.*



Additional File 5: Integration of *pylap4* promoter and GFPmut2 reporter into the *p230p* safe harbor locus of *Plasmodium yoelii*. (Top) Genotyping PCR was conducted with two parasite populations transfected with the linearized pSL1019 plasmid and wild-type parasites. Primer sets specific to wild-type parasites (WT-5', WT-3') or transgenic parasites (TG-5', TG-3') were used to assess integration on both sides of the *pyp230p* locus. (Bottom) Expected PCR amplicons are noted in the genomic loci schematic.