

Figure S1

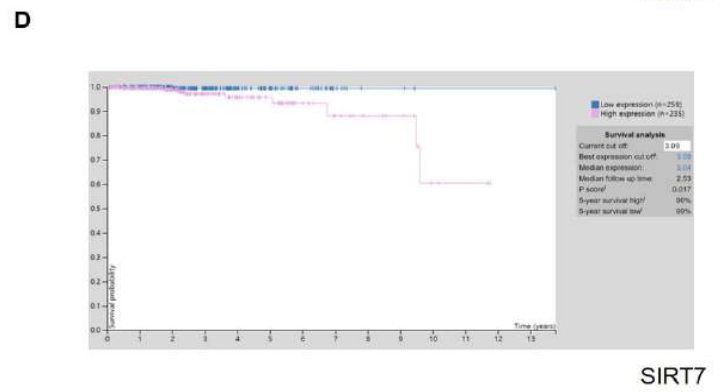
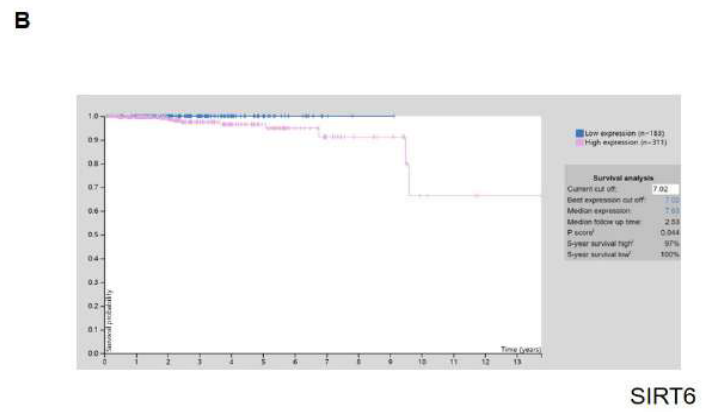
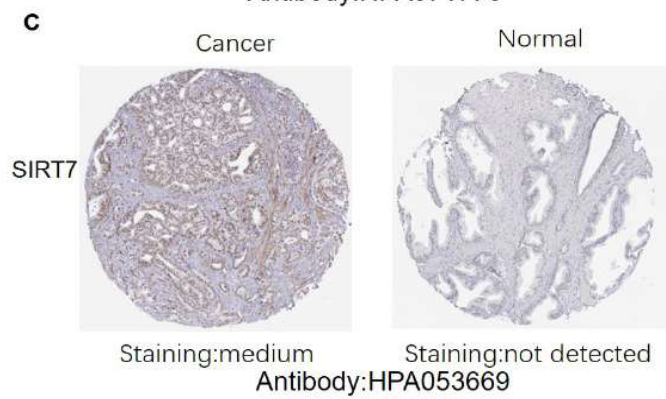
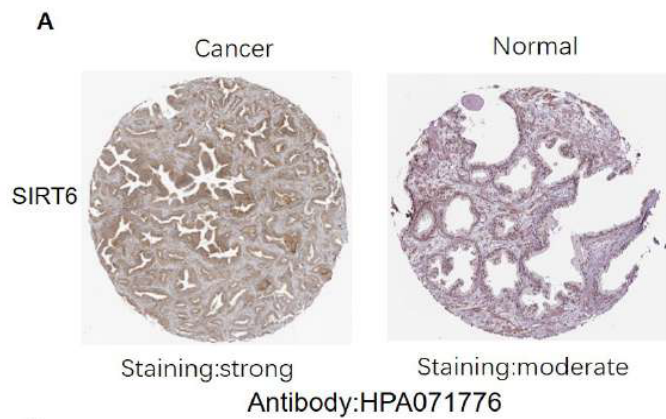
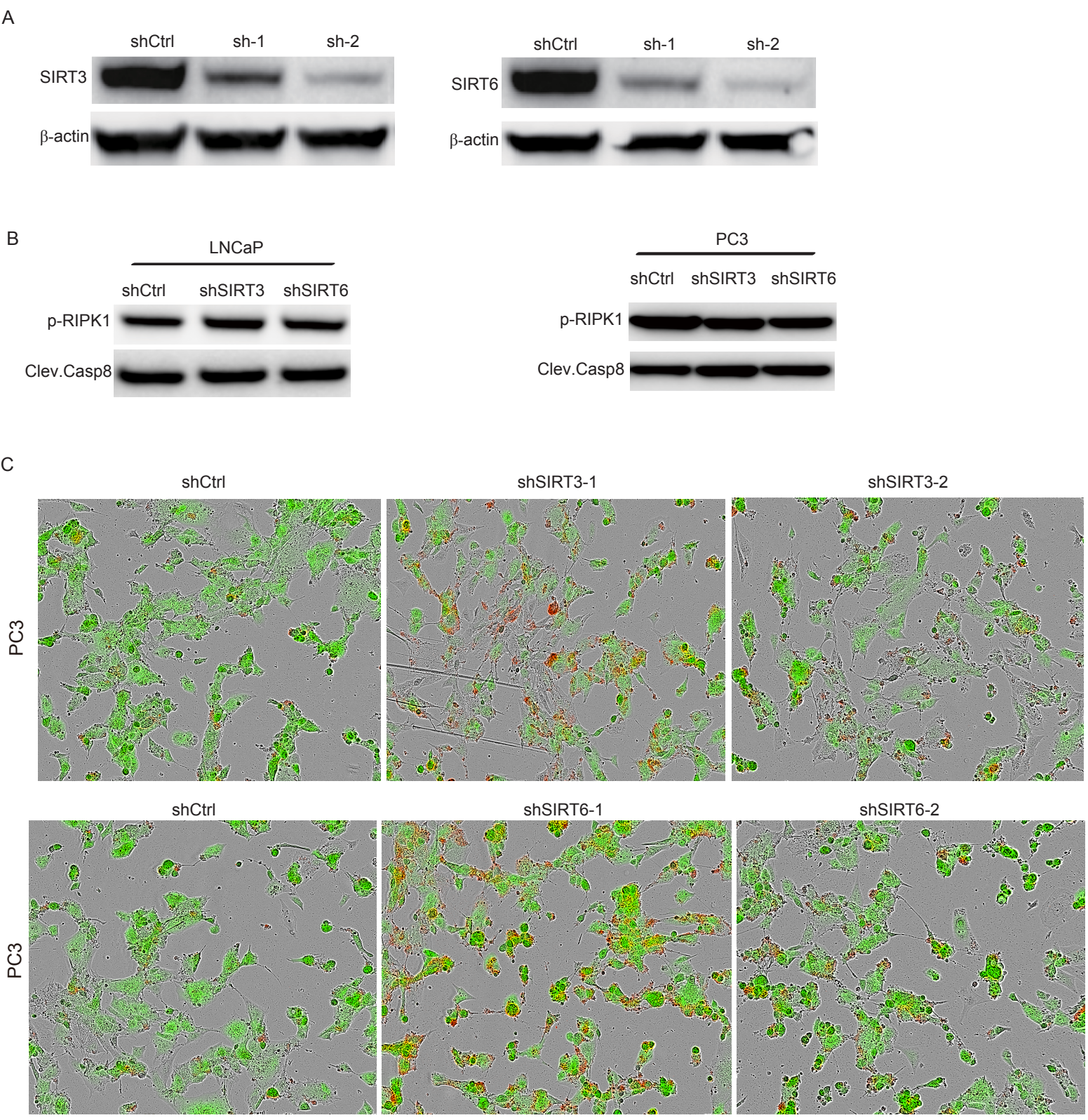


Figure S2



Supplementary Table 1. Basic characteristics of prostate cancer patients

Variables	PCa patients (n=499)
Age (years, Mean±SD)	61.01±6.81
Gleason scores	
<7	N=45
7	N=246
>7	N=208
Tumor stage	
≤T2b	N=23
>T2b	N=469
Pathology_N_stage	
N0	N=347
N1	N=79
PSA_value	
≥0.2	N=98
<0.2	N=344
Histological_type	
Acinar type	N=484
Other type	N=15
Amounts of gene expression (Mean±SD)	
SIRT1	663.87±217.47
SIRT2	1236.27±311.70
SIRT3	839.09±266.10
SIRT4	28.16±12.72
SIRT5	371.95±78.24
SIRT6	412.29±180.96
SIRT7	329.37±117.14

Abbreviation: PCa: prostate cancer.

Supplementary Table 2. Univariate analysis of overall survival in prostate cancer patients.

Variables	Univariate analysis		
	Hazard ratio	95% CI	P value
Age (years)	1.039	1.006-1.074	0.020
Gleason scores	1.629	1.329-1.997	<0.001
Tumor stage	2.675	0.657-10.889	0.170
Pathology_N_stage	1.693	1.051-2.726	0.030
Histological_type	0.538	0.196-1.474	0.228
SIRT1	1.000	0.999-1.001	0.578
SIRT2	0.999	0.999-1.000	0.158
SIRT3	0.999	0.998-1.000	0.014
SIRT4	0.999	0.982-1.015	0.869
SIRT5	0.998	0.995-1.001	0.156
SIRT6	0.999	0.997-1.000	0.037
SIRT7	1.000	0.998-1.002	0.972

Supplementary Table 3. Multivariate analysis of overall survival in prostate cancer patients.

Variables	Multivariate analysis		
	Hazard ratio	95% CI	P value
Age (years)	1.023	0.990-1.056	0.182
Gleason scores	1.437	1.140-1.810	0.002
Tumor stage	1.513	0.364-6.296	0.569
Pathology_N_stage	1.260	0.757-2.095	0.374
Histological_type	0.627	0.193-2.034	0.627
SIRT1	1.001	0.999-1.002	0.325

Supplementary Table 4. Multivariate analysis of overall survival in prostate cancer patients.

Variables	Multivariate analysis		
	Hazard ratio	95% CI	<i>P</i> value
Age (years)	1.022	0.989-1.057	0.184
Gleason scores	1.433	1.137-1.807	0.002
Tumor stage	1.485	0.358-6.158	0.586
Pathology_N_stage	1.214	0.728-2.025	0.458
Histological_type	0.509	0.149-1.737	0.281
SIRT2	0.999	0.999-1.000	0.180

Supplementary Table 5. Multivariate analysis of overall survival in prostate cancer patients.

Variables	Multivariate analysis		
	Hazard ratio	95% CI	<i>P</i> value
Age (years)	1.020	0.988-1.053	0.227
Gleason scores	1.433	1.138-1.806	0.002
Tumor stage	1.376	0.332-5.712	0.660
Pathology_N_stage	1.263	0.761-2.097	0.367
Histological_type	0.408	0.122-1.364	0.146
SIRT3	0.998	0.997-0.999	0.003

Supplementary Table 6. Multivariate analysis of overall survival in prostate cancer patients.

Variables	Multivariate analysis		
	Hazard ratio	95% CI	<i>P</i> value
Age (years)	1.023	0.990-1.057	0.181
Gleason scores	1.441	1.145-1.815	0.002
Tumor stage	1.463	0.352-6.083	0.601
Pathology_N_stage	1.262	0.759-2.098	0.370
Histological_type	0.685	0.213-2.204	0.526
SIRT4	0.999	0.983-1.016	0.939

Supplementary Table 7. Multivariate analysis of overall survival in prostate cancer patients.

Variables	Multivariate analysis		
	Hazard ratio	95% CI	<i>P</i> value
Age (years)	1.021	0.988-1.055	0.223
Gleason scores	1.443	1.146-1.818	0.002
Tumor stage	1.465	0.353-6.078	0.599
Pathology_N_stage	1.217	0.731-2.208	0.451
Histological_type	0.599	0.183-1.957	0.396
SIRT5	0.998	0.996-1.001	0.236

Supplementary Table 8. Multivariate analysis of overall survival in prostate cancer patients.

Variables	Multivariate analysis		
	Hazard ratio	95% CI	<i>P</i> value
Age (years)	1.022	0.989-1.055	0.191
Gleason scores	1.444	1.145-1.822	0.002
Tumor stage	1.480	0.357-6.135	0.589
Pathology_N_stage	1.279	0.770-2.124	0.342
Histological_type	0.415	0.125-1.376	0.150
SIRT6	0.998	0.997-0.999	0.007

Supplementary Table 9. Multivariate analysis of overall survival in prostate cancer patients.

Variables	Multivariate analysis		
	Hazard ratio	95% CI	<i>P</i> value
Age (years)	1.023	0.990-1.057	0.169
Gleason scores	1.465	1.162-1.846	0.001
Tumor stage ^a	1.442	0.347-5.990	0.614
Pathology_N_stage	1.278	0.768-2.127	0.346
Histological_type	0.511	0.151-1.734	0.281
SIRT7	0.999	0.997-1.001	0.153