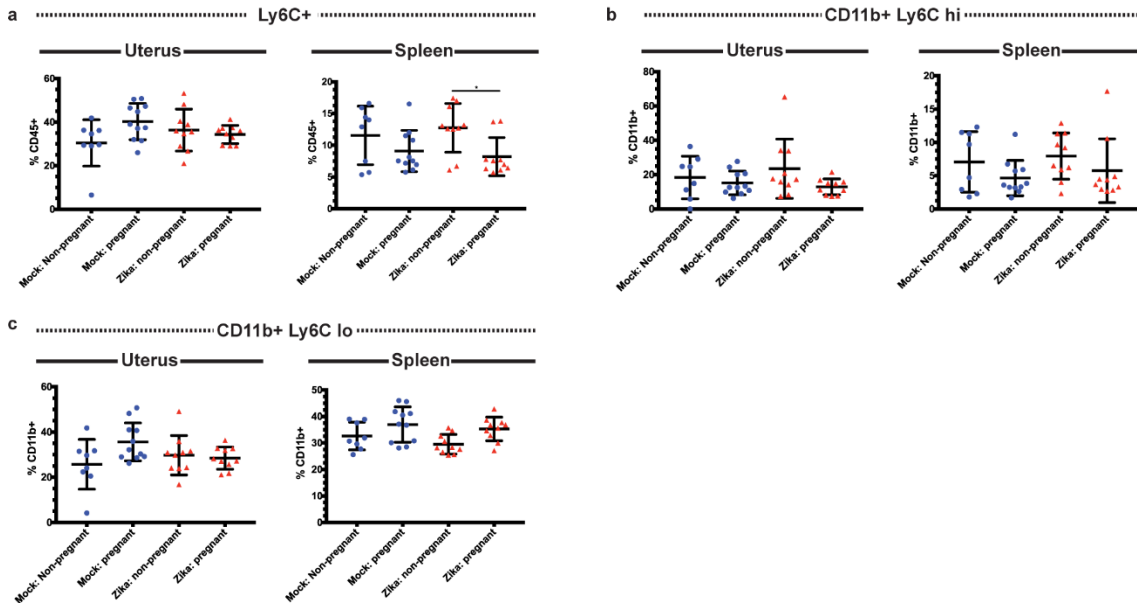


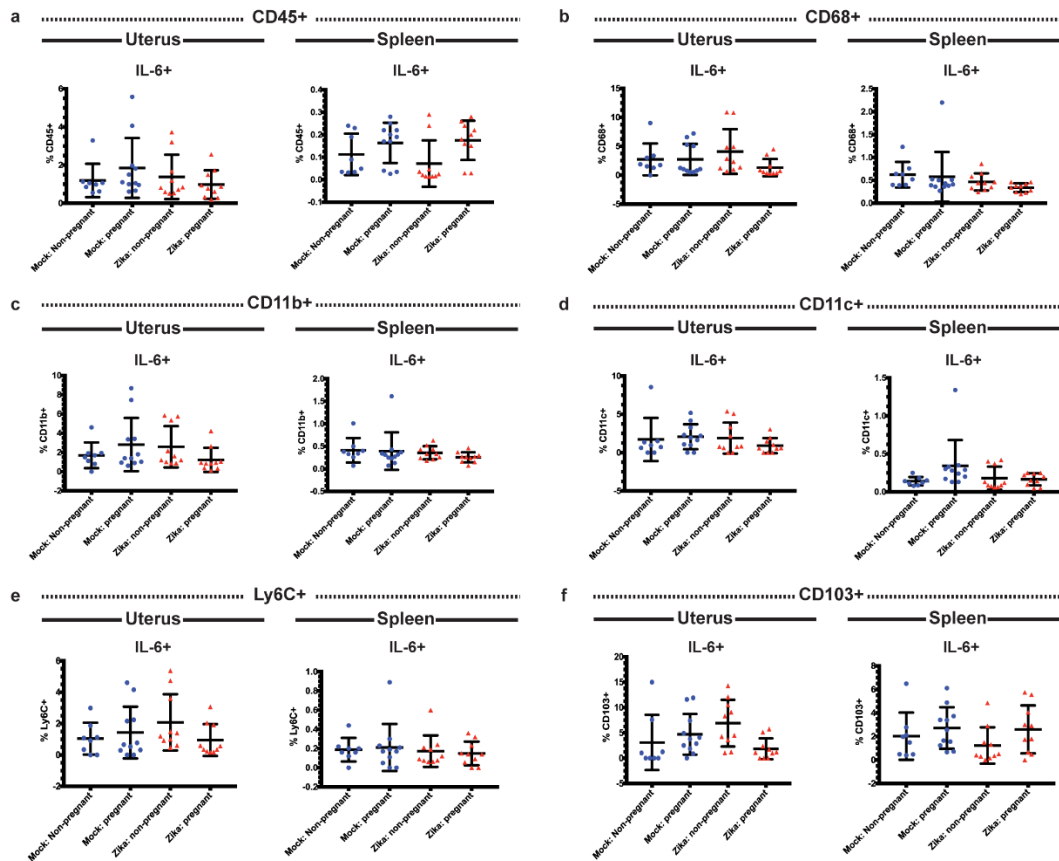
## Supplementary Figure Legends

Figure S1.



**Figure S1. Frequencies of uterine and splenic Ly6C<sup>+</sup> cells in ZIKV-infected pregnant and non-pregnant mice.** Flow cytometry was performed on immune cells from the uteruses and spleens of ZIKV-infected (red triangles) and mock-infected (blue circles) pregnant and non-pregnant mice at day 3 post infection, and the frequencies of Ly6C<sup>+</sup> (a), CD11b<sup>+</sup> Ly6C<sup>hi</sup> (b), and CD11b<sup>+</sup> Ly6C<sup>lo</sup> (c) cells were measured. \* $p < 0.05$ , one-way ANOVA and Tukey's multiple comparisons test. N=39. (2 independent experiments of 19-20 mice, N=8 mock non-pregnant, N=11 mock pregnant, N=10 ZIKV non-pregnant, N=10 ZIKV pregnant). Error bars represent the mean  $\pm$  standard deviation.

**Figure S2**



**Figure S2. IL-6 expression in the uterine and splenic immune cells of ZIKV and mock-infected mice.** Flow cytometry was performed on the uterine and splenic immune cells of ZIKV-infected (red triangles) and mock-infected (blue circles) pregnant and non-pregnant mice. Frequencies of IL-6-expressing cells were measured within the CD45+ (a), CD68+ (b), CD11b+ (c), CD11c+ (d), Ly6C+ (e), and CD103+ (f) populations. N=39. (2 independent experiments of 19-20 mice, N=8 mock non-pregnant, N=11 mock pregnant, N=10 ZIKV non-pregnant, N=10 ZIKV pregnant). Error bars represent the mean  $\pm$  standard deviation.

**Supplementary Table 1.**

Cell Types	Uterus		Spleen	
	Pregnancy	ZIKV Infection	Pregnancy	ZIKV Infection
CD68+	↑	--	↑ (Infected only)	--
CD11c+	--	--	↑ (Infected only)	--
CD11b+ CD11c+	↑ (Infected only)	--	--	↑ (Pregnant only)
CD11b+ CD11c+ MHCII+	↑ (Infected only)	--	--	--
CD11b+ CD11c+ MHCII+ IL-10+	↓ (Mock only)	--	--	--
CD11b+ CD11c+ CD86+	↓	--	--	--
CD11c+ CD103+	↑	--	--	--
IL-12+				
CD45+ IL-12+	↓ (Infected only)	--	↓ (Infected only)	--
CD11b+ IL-12+	↓ (Infected only)	--	↓ (Infected only)	--
CD68+ IL-12+	↓ (Infected only)	--	↓ (Infected only)	--
Ly6C+ IL-12+	↓ (Infected only)	↑ (Non-pregnant only)	--	--
CD8+	--	↑ (Pregnant only)	--	--
CD4+ CD11a+ CD49d+	↓	--	--	↑ (Non-pregnant only)
CD8 <sup>lo</sup> CD11a <sup>hi</sup>	↓ (Infected only)	--	--	↑ (Non-pregnant only)

**Supplementary Table 1. Summary of immune cell changes during pregnancy and ZIKV infection.**