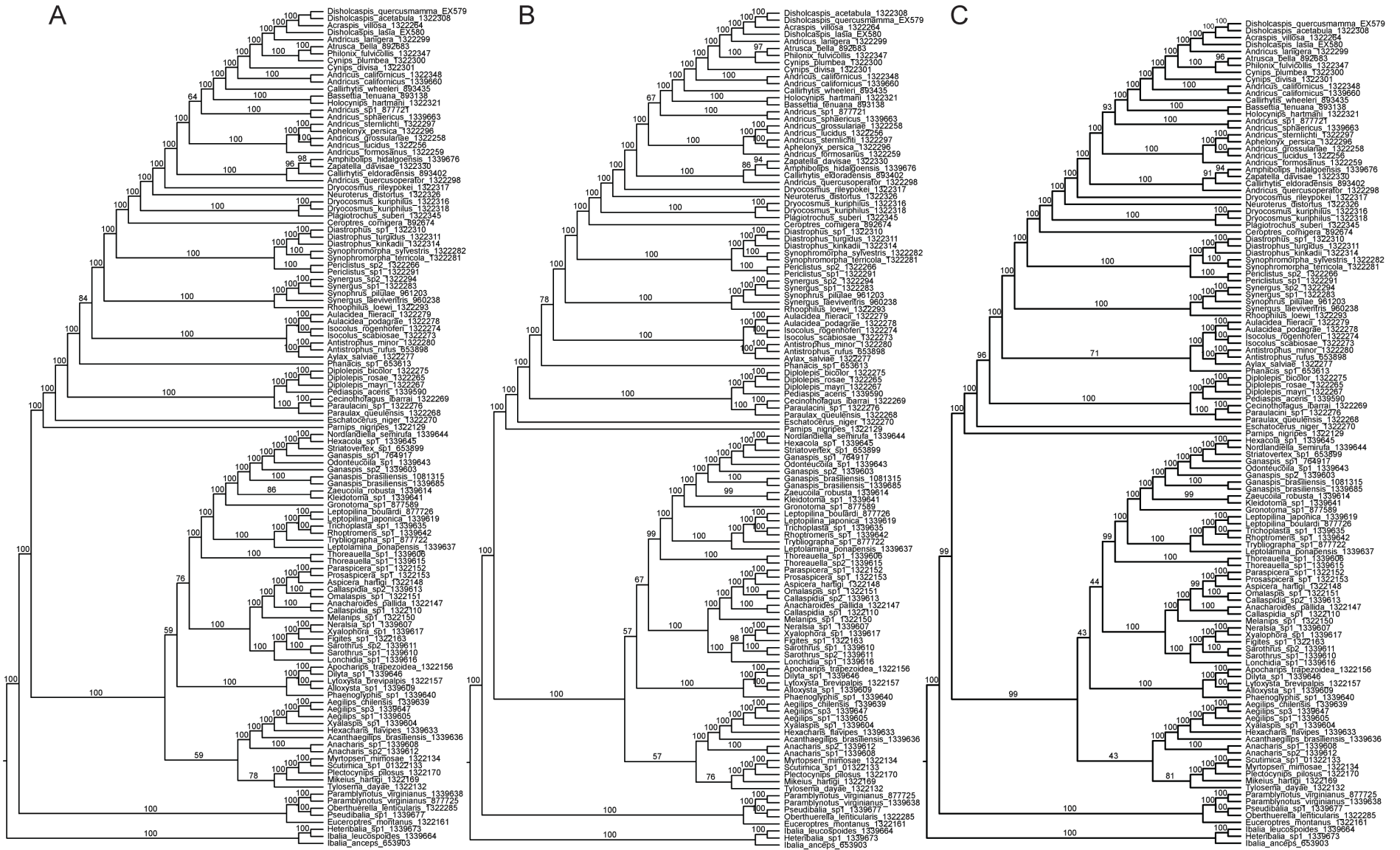


Additional files for Blaimer et al: Comprehensive phylogenomic analyses re-write the evolution of parasitism within cynipoid wasps. BMC Evolutionary Biology.



Additional file 10: Additional trees estimated from ingroup-only analyses. All trees are presented as cladograms for clarity of relationships, and are based on a combined ML search for the best tree and 1000 bootstrap replicates using unpartitioned data matrices. Bootstrap support values are displayed next to respective nodes. Analyses were rooted with *Ibala anceps* and excluded non-cynipoid outgroups. **A)** 50% completeness matrix, **B)** 60% completeness matrix, **C)** 70% completeness matrix.