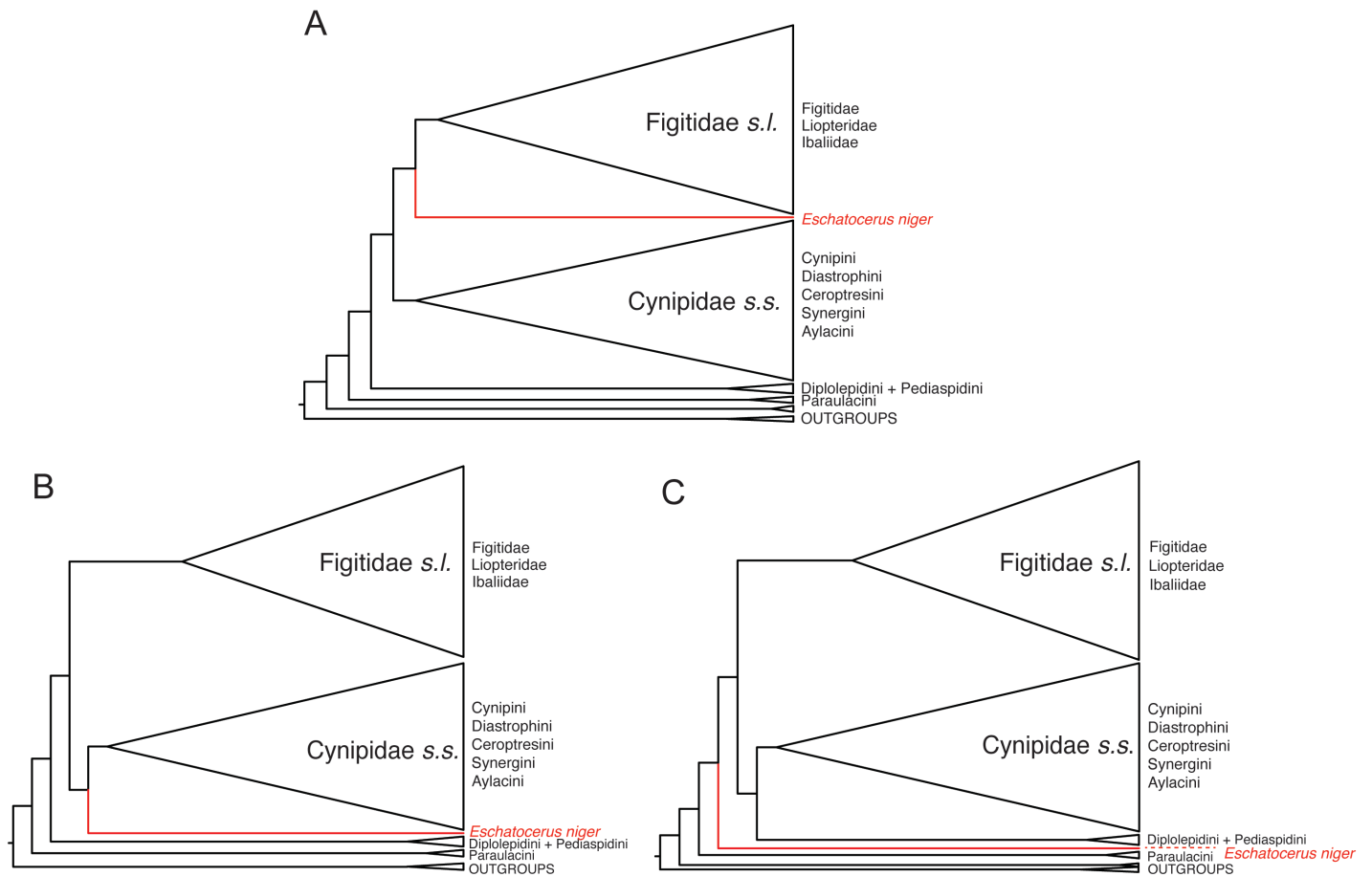


**Additional files** for Blaimer et al: Comprehensive phylogenomic analyses re-write the evolution of parasitism within cynipoid wasps. *BMC Evolutionary Biology*.



**Additional file 12: Summary of phylogenetic positions for *Eschatocerus niger*.** **A)** *Eschatocerus niger* grouping as sister to Figitidae, **B)** *Eschatocerus niger* grouping as sister to Cynipidae s.s., **C)** *Eschatocerus niger* grouping as sister to Figitidae + (Cynipidae s.s. + (Diplolepidini + Pediaspini)). Topology A is supported by all analyses on the full data set (all concatenated ML analyses and ASTRAL-III coalescent analysis) as well as four data subsets binned by GC content. Topology B is supported by four of the GC bins, while Topology C is supported by two of the GC bins. For details refer to Additional file 4.