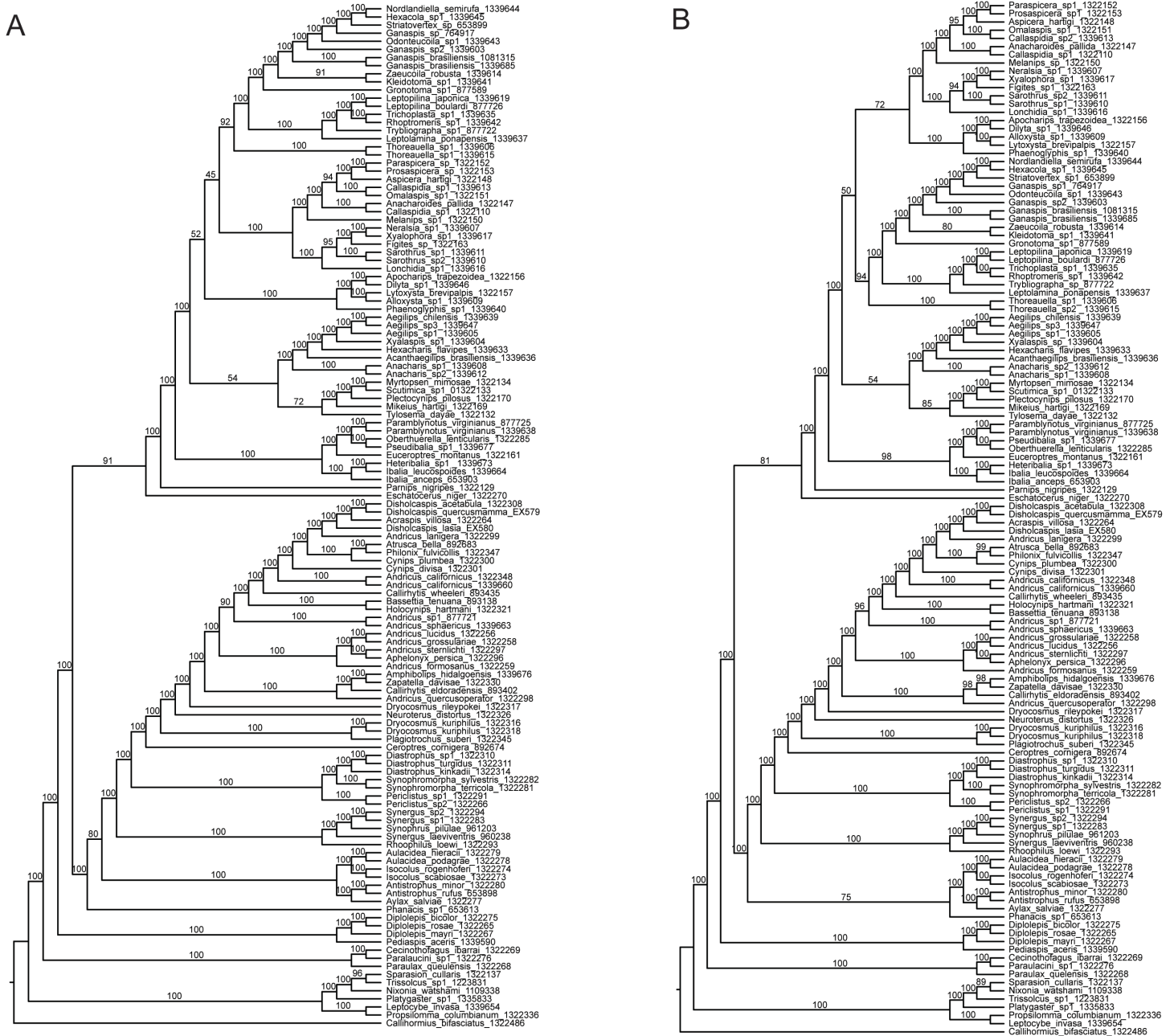


**Additional files for Blaimer et al: Comprehensive phylogenomic analyses re-write the evolution of parasitism within cynipoid wasps. BMC Evolutionary Biology.**



**Additional file 6: Additional trees estimated from partitioned concatenated analyses.** All trees are presented as cladograms for clarity of relationships, and are based on a combined ML search for the best tree and 1000 bootstrap replicates. Bootstrap support values are displayed next to respective nodes. Analyses were rooted using the outer outgroup *Callihormius bifasciatus*. **A)** 60% completeness matrix using SWSC-EN partitioning scheme, **B)** 70% completeness matrix.