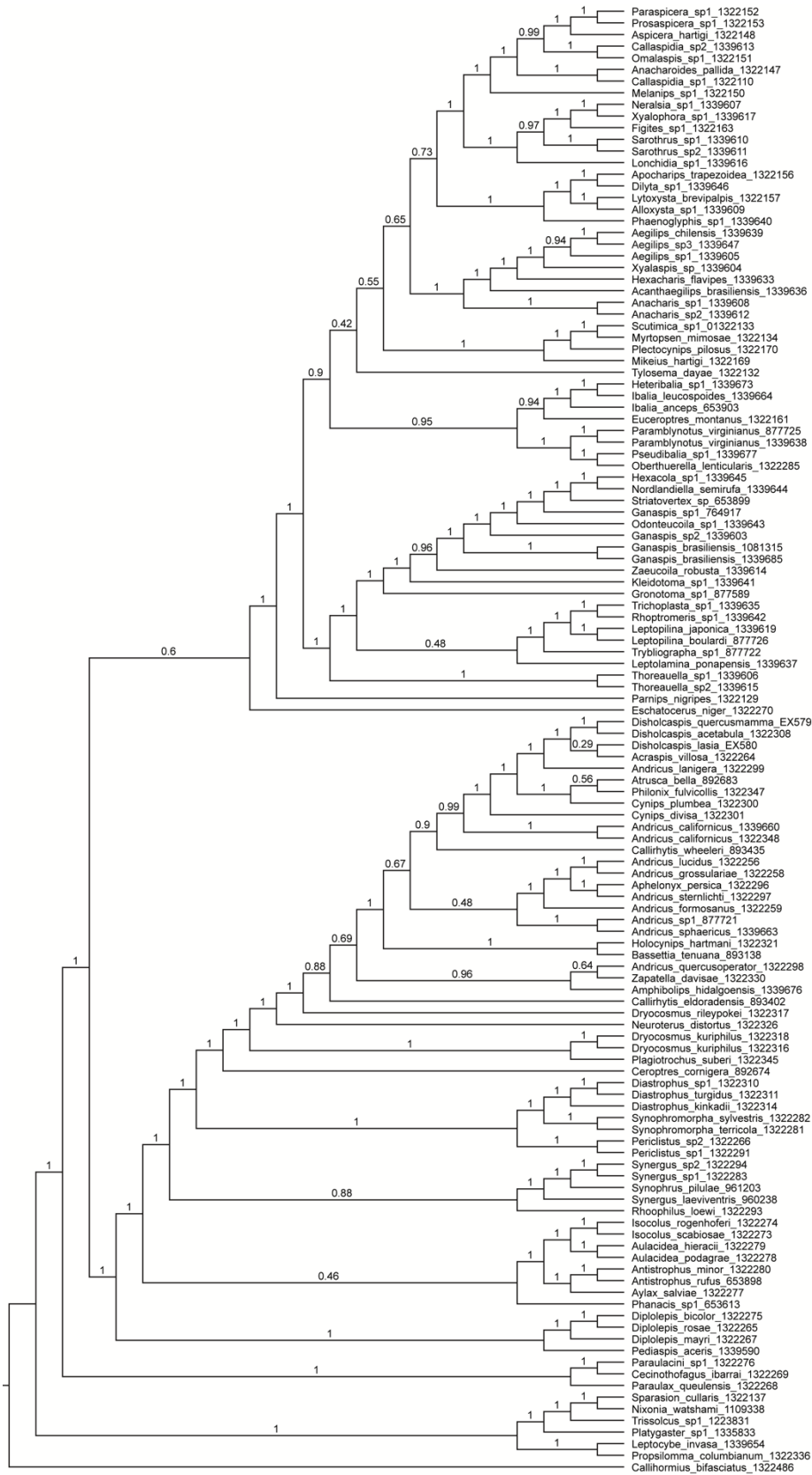


**Additional files** for Blaimer et al: Comprehensive phylogenomic analyses re-write the evolution of parasitism within cynipoid wasps. *BMC Evolutionary Biology*.



**Additional file 8: Species Tree estimated with ASTRAL-III.** Cladogram estimated using ASTRAL-III coalescent analysis from 1143 UCE gene trees reconstructed with IQTREE. Support values are local posterior probabilities, which are branch support values that measure the support for a quadripartition, not a bipartition.