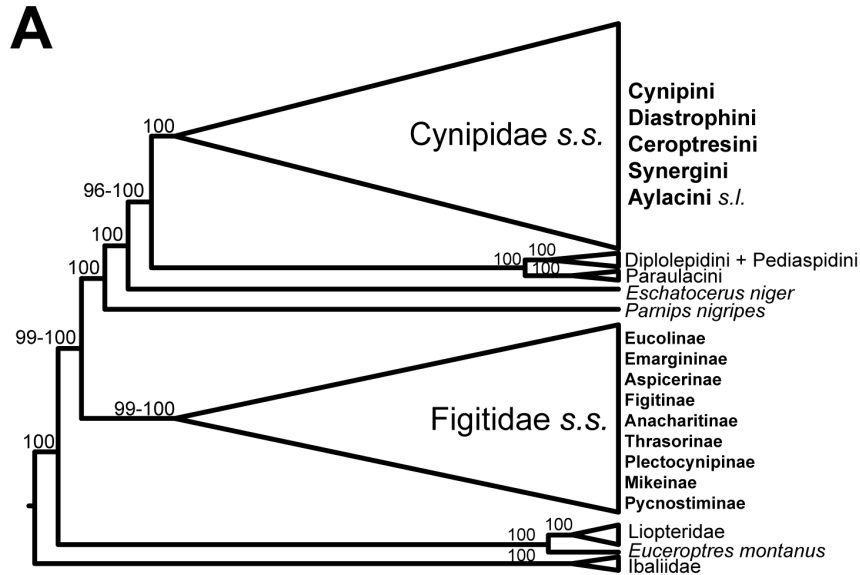
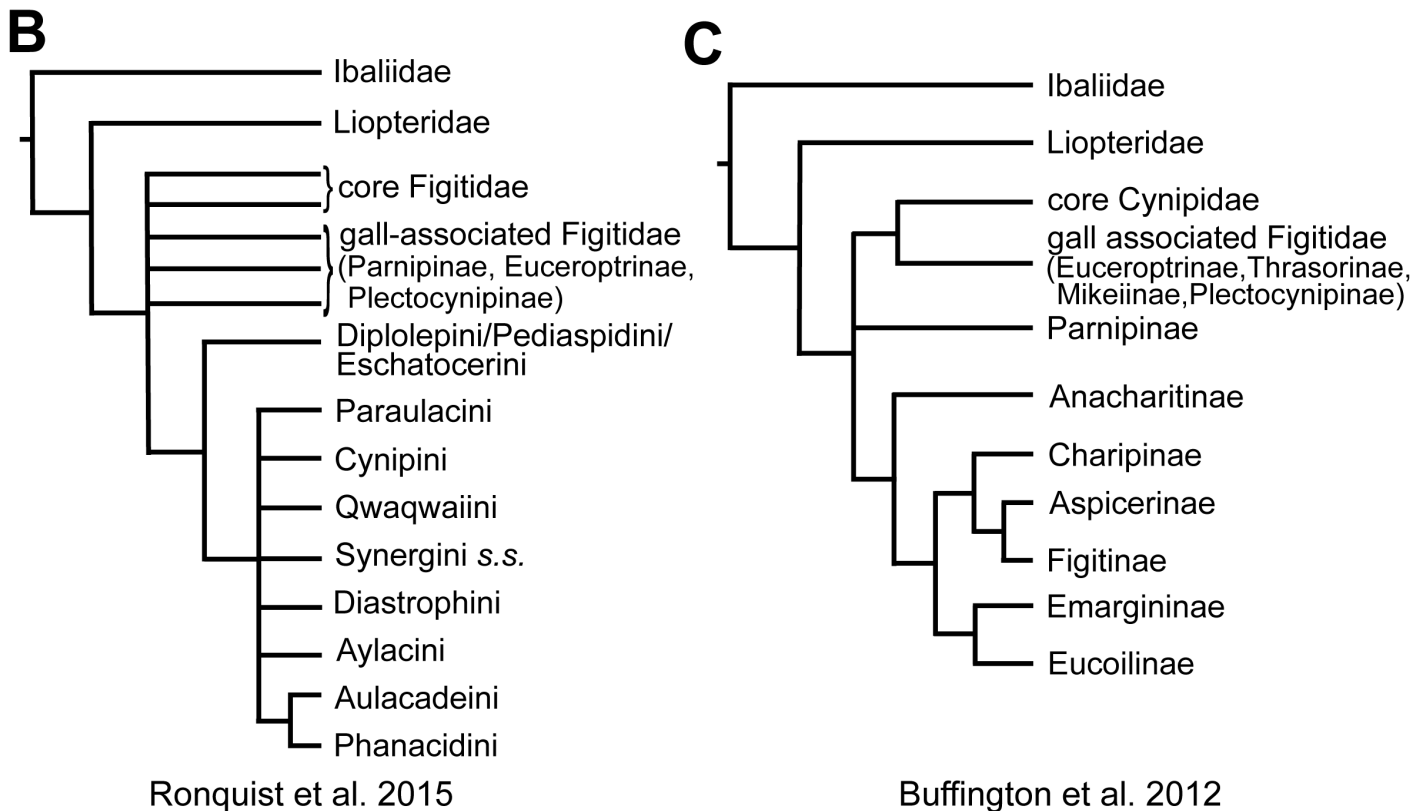


**Additional files** for Blaimer et al: Comprehensive phylogenomic analyses re-write the evolution of parasitism within cynipoid wasps. *BMC Evolutionary Biology*.



This study, excluding outgroups while rooting with *Ibalia*.



**Additional file 9: Summary of topology for ingroup-only analyses and previous hypotheses.**

**A)** Sketch of the topology recovered when excluding the seven non-cynipoid outgroup taxa from the analyses and rooting with *Ibalia anceps*. Summarized here are identical topologies resulting from unpartitioned Maximum Likelihood analyses with IQ-TREE (combined ML search for best tree and 1000 bootstraps) of 50%, 60% and 70% completeness matrices including 119 ingroup taxa. Most nodes have bootstrap support=100; ranges represent variation in support across analyses. **B)** Sketch of the main topology recovered by Ronquist et al. (2015). **C)** Sketch of main topology recovered by Buffington et al. (2012).