

Supplemental Information

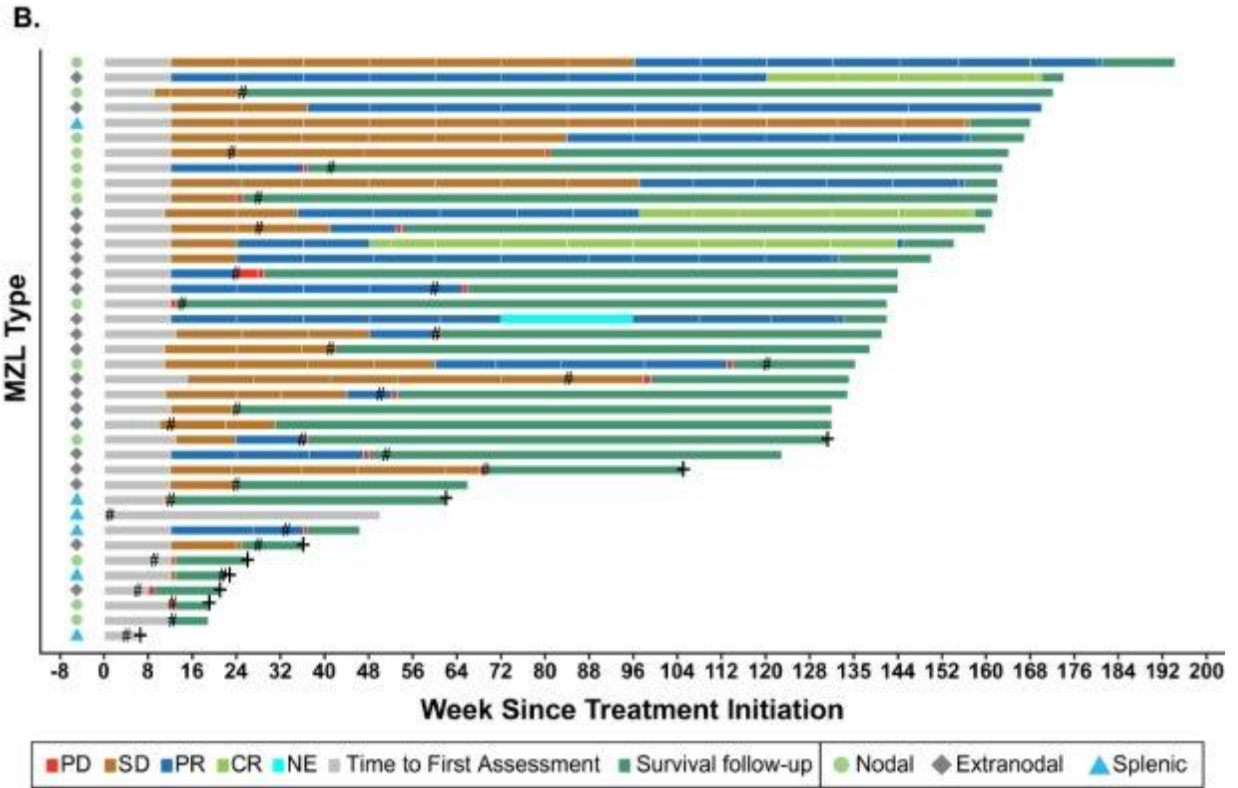
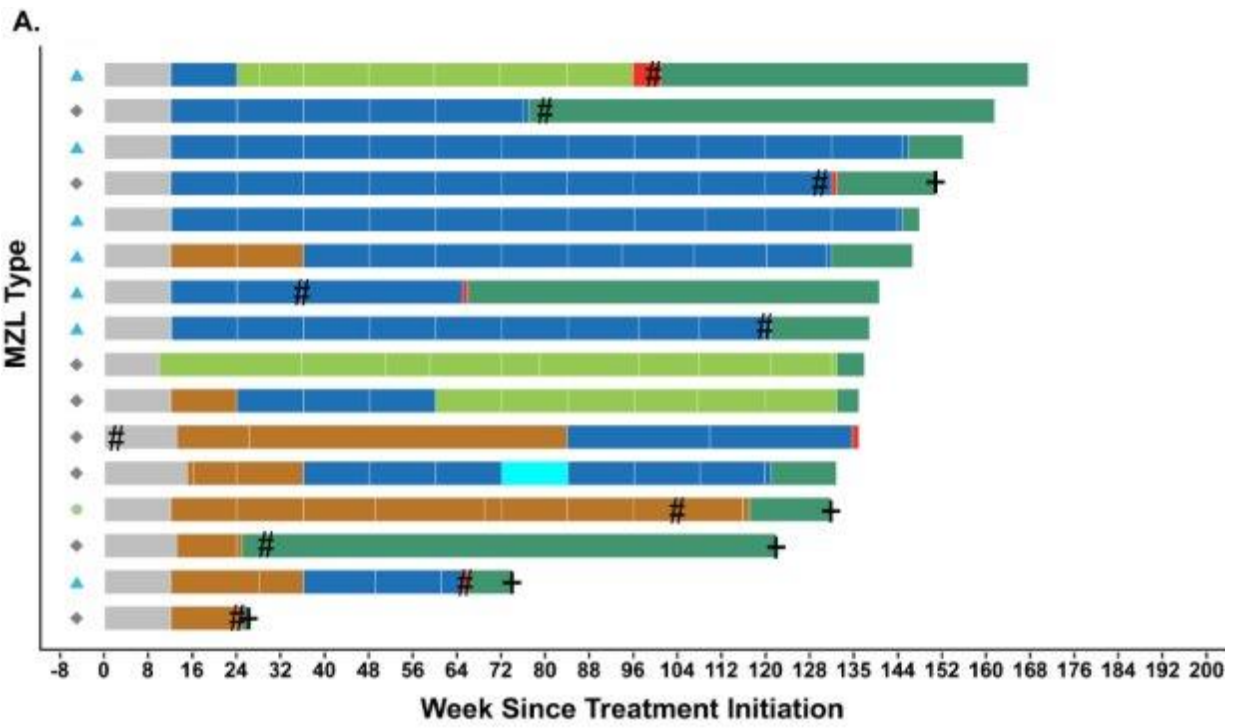
Supplemental Table 1. Efficacy of single-agent ibrutinib in MZL subtypes

Outcome	Splenic, n (%) n=13	Nodal, n (%) n=17	Extranodal, n (%) n=30	Total, n (%) N=60
Overall response rate	8 (62)	8 (47)	19 (63)	35 (58)
Complete response	1 (8)	0	5 (17)	6 (10)
Partial response	7 (54)	8 (47)	14 (47)	29 (48)
Stable disease	3 (23)	6 (35)	9 (30)	18 (30)
Progressive disease	0	2 (12)	1 (3)	3 (5)
Median DOR, months, (95% CI)	NE (5.4-NE)	NE (2.8-NE)	27.6 (7.3-NE)	27.6 (12.1-NE)
Median PFS, months, (95% CI)	18.5 (5.2-NE)	8.3 (5.6-30.3)	22.5 (12.2-NE)	15.7 (12.2-30.4)

CI indicates confidence interval; DOR, duration of response; MZL, marginal zone lymphoma;

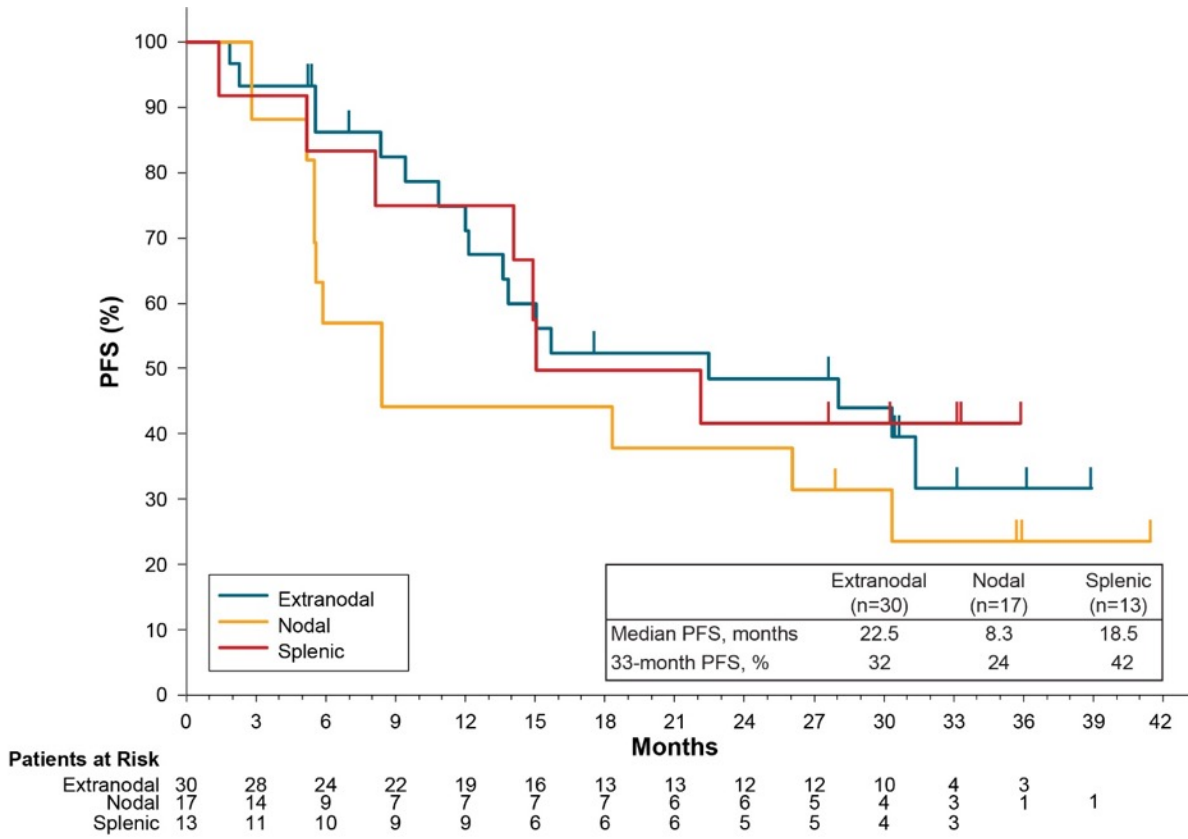
NE, not estimable; and PFS, progression-free survival.

Supplemental Figure 1. Response over time in subgroups. (A) Response over time in patients treated with prior RTX. (B) Response over time in patients treated with prior RTX-CIT. # indicates discontinuation of study treatment; + indicates death. CR indicates complete response; NE, not evaluable; PD, progressive disease; PR, partial response; RTX, rituximab; RTX-CIT, rituximab-based chemoimmunotherapy; and SD, stable disease.



Supplemental Figure 2. Progression-free survival by marginal zone lymphoma subtype.

PFS indicates progression-free survival.



Supplemental Figure 3. Overall survival by marginal zone lymphoma subtype. NE

indicates not evaluable; OS, overall survival.

